



# Parts Manual

Mfg. No: 881907  
Mustang 19" Alloy Walk Behind Mower,  
725EXI



---

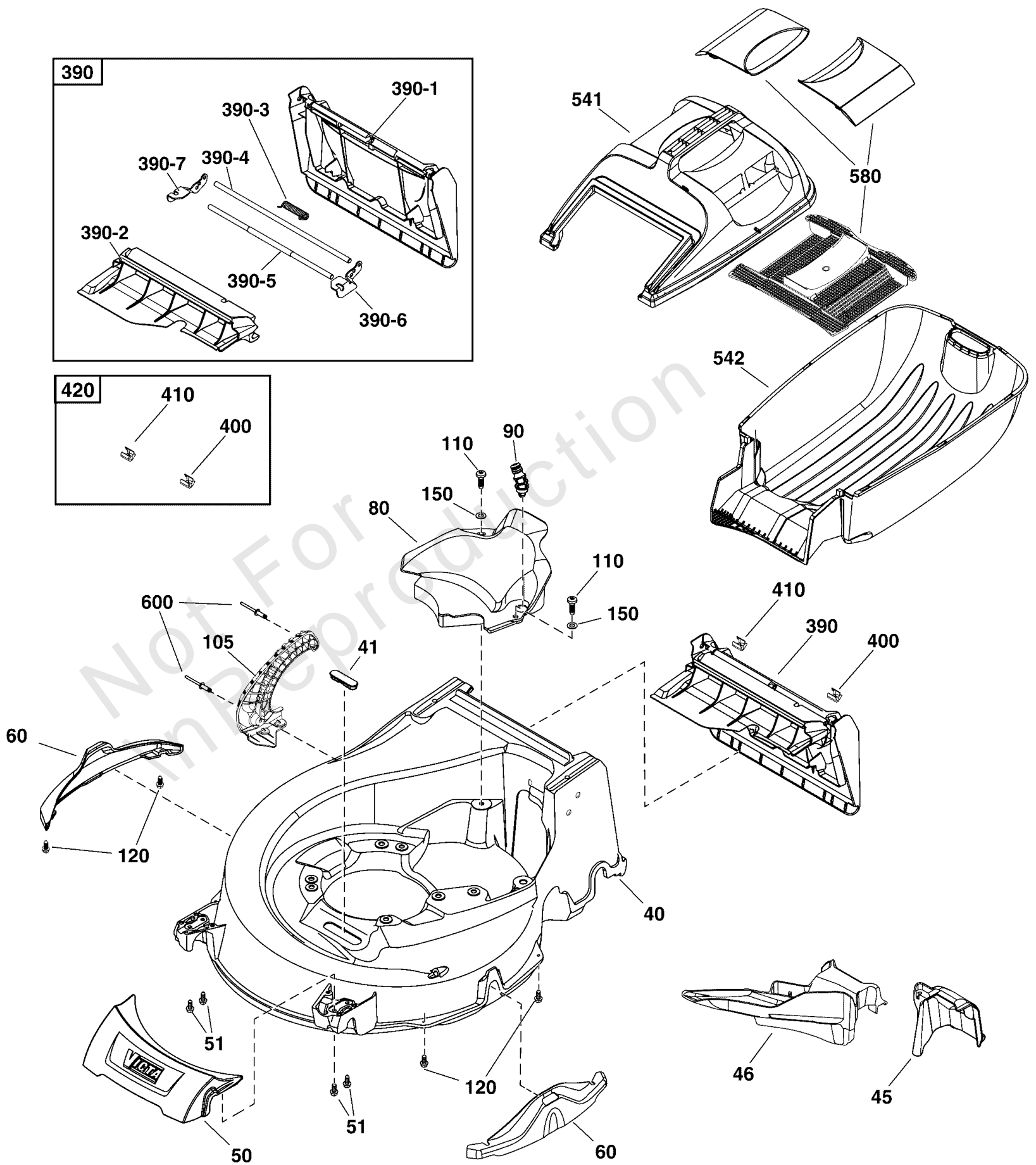
<b>Model Components</b>	<b>Page</b>
Deck & Catcher Group.....	4
Engine & Blade Group.....	6
Handles & Controls Group.....	8
Wheels & Axles Group.....	10
Torque Specification Chart.....	12

Not For  
In Reproduction

# Deck & Catcher Group

Note: Unless noted otherwise, use the standard torque specifications

Mfg. No: 881907



## Deck & Catcher Group

REF NO	PART NO	QTY	DESCRIPTION
40	CH87102Q	1	* DECK, Aztec Silver
41	CH85985A	1	PLUG, 4 Stroke Models Only
45	CH87433G	1	COVER, Chute
46	CH87203A	1	MULCH PLUG, Silver
50	CH87140Q	1	DECK TRIM, Front
51	-----	4	SCREW -(Not a serviceable part)
60	CH87118G	2	TRIM, Side, Black
80	CH87108GD	1	COVER, Deck, Black
90	HA28024A	1	WASHOUT PORT
105	CH87154G	1	SEGMENT
110	-----	2	** SCREW, Pan Torx, Trilobe, M6 x 19
120	-----	4	** SCREW, Pan Torx Self Tap, ST4.2 x 16
150	-----	2	** WASHER, 6.4 x 16 x 2
390	CH87155G	1	REAR FLAP ASSEMBLY -(Includes Ref. Nos. 390-1 through 390-7)
390-1	-----	1	FLAP, Rear
390-2	CH87197G	1	COVER, Flap. Black
390-3	CH87157D	1	SPRING, Flap
390-4	-----	1	PIVOT ROD -(Not a serviceable part. Order Ref. No. 390)
390-5	-----	1	ROD -(Not a serviceable part. Order Ref. No. 390)
390-6	CH87158D	1	BRACKET, Left
390-7	CH87159D	1	BRACKET, Right
400	CH88304G	1	HINGE CAP, Left
410	CH88305G	1	HINGE CAP, Right
420	CH88306G	1	HINGE CAP, Pair -(Includes Ref. Nos. 0400 & 0410)
541	GC11740A	1	GRASS CATCHER, Top
542	GC12012B	1	GRASS CATCHER, Bottom
580	GC11767V	1	VENT & MESH PACK, Adjustable Vents, Silver
600	-----	2	RIVET -(Not a serviceable part)

### Footnotes:

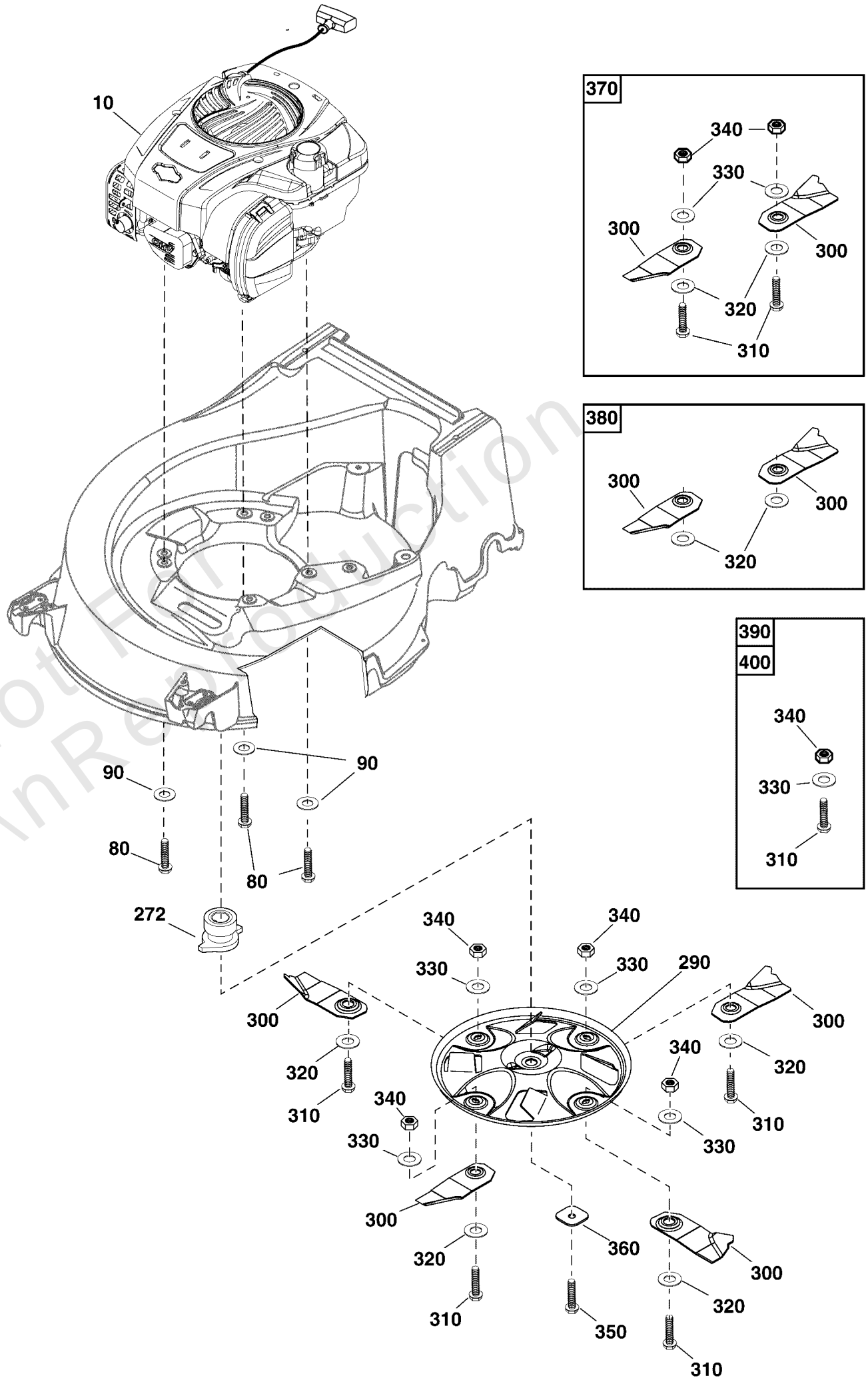
Note:\*\* Items without part numbers are common fasteners and are available at your local hardware store.

Note:\* Check for colour availability. See your local Briggs & Stratton distributor for parts and service.

# Engine & Blade Group

Note: Unless noted otherwise, use the standard torque specifications

Mfg. No: 881907



## Engine & Blade Group

REF NO	PART NO	QTY	DESCRIPTION
10	104M08-0172-H5	1	* ENGINE, Briggs & Stratton 750 IS QPT Series
80	HA21320D	3	BOLT, Taptite, HW, 3/8 UNC x 30
90	HA22277D	3	WASHER, Engine Mounting
272	EE14861A	1	SLEEVE, Engine
290	CA09459G	1	BLADE DISK, Mulch and Catch
300	-----	4	BLADE, Low Profile
310	-----	4	BOLT, Blade
320	CA09347A	4	WASHER, Blade Tension
330	-----	4	WASHER, Belleville
340	CA09241D	4	NUT, Nylock, 3/8 UNC
350	EE14484B	1	BOLT, Flanged, Blade Disc
360	EN73054B	1	WASHER, Blade Disc
370	CA09470B	1	KIT, Blade & Bolt, Bulk Pack (1 Pack) -(Includes Ref. No. 300, 310, 320, 330 & 340)
380	CA09470P	1	KIT, Blade & Bolt, Bulk Pack (40 Pairs) -(Includes Ref. No. 300 & 320)
390	CA09277S	1	KIT, Hardware, Bolt, Washer, Nut (1 Pack) -(Includes Ref. No. 310, 330 & 340)
400	CA09277P	1	KIT, Hardware, Blade, Washer, Nut , Bulk Pack (50 Pairs) -(Includes Ref. No. 310, 330 & 340)

---

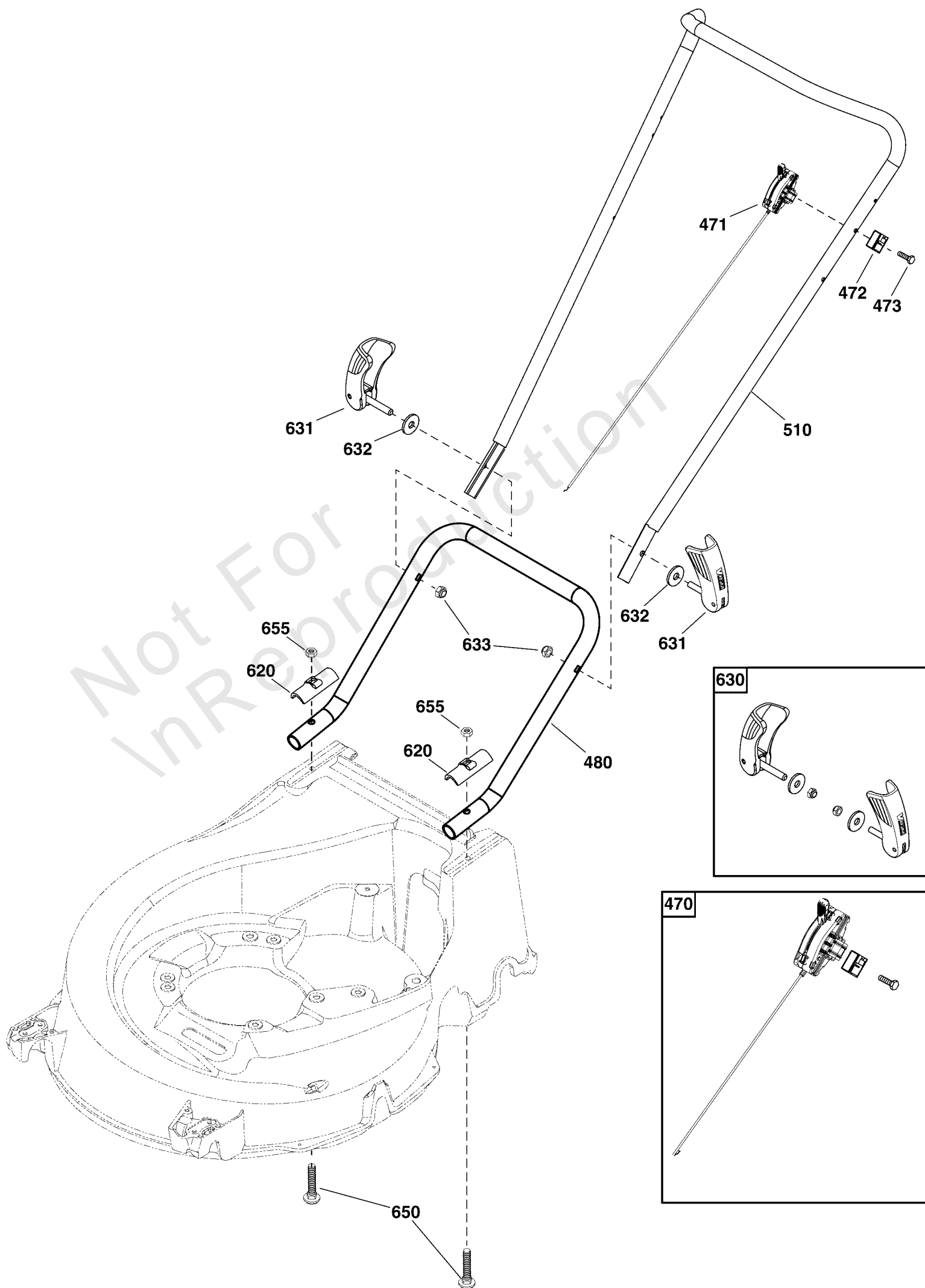
### Footnotes:

Note\* Engine Style may vary from illustration. To verify your specific engine model, please reference the ID Tag located on your engine. See your local Briggs & Stratton distributor for parts and service.

# Handles & Controls Group

Note: Unless noted otherwise, use the standard torque specifications

Mfg. No: 881907



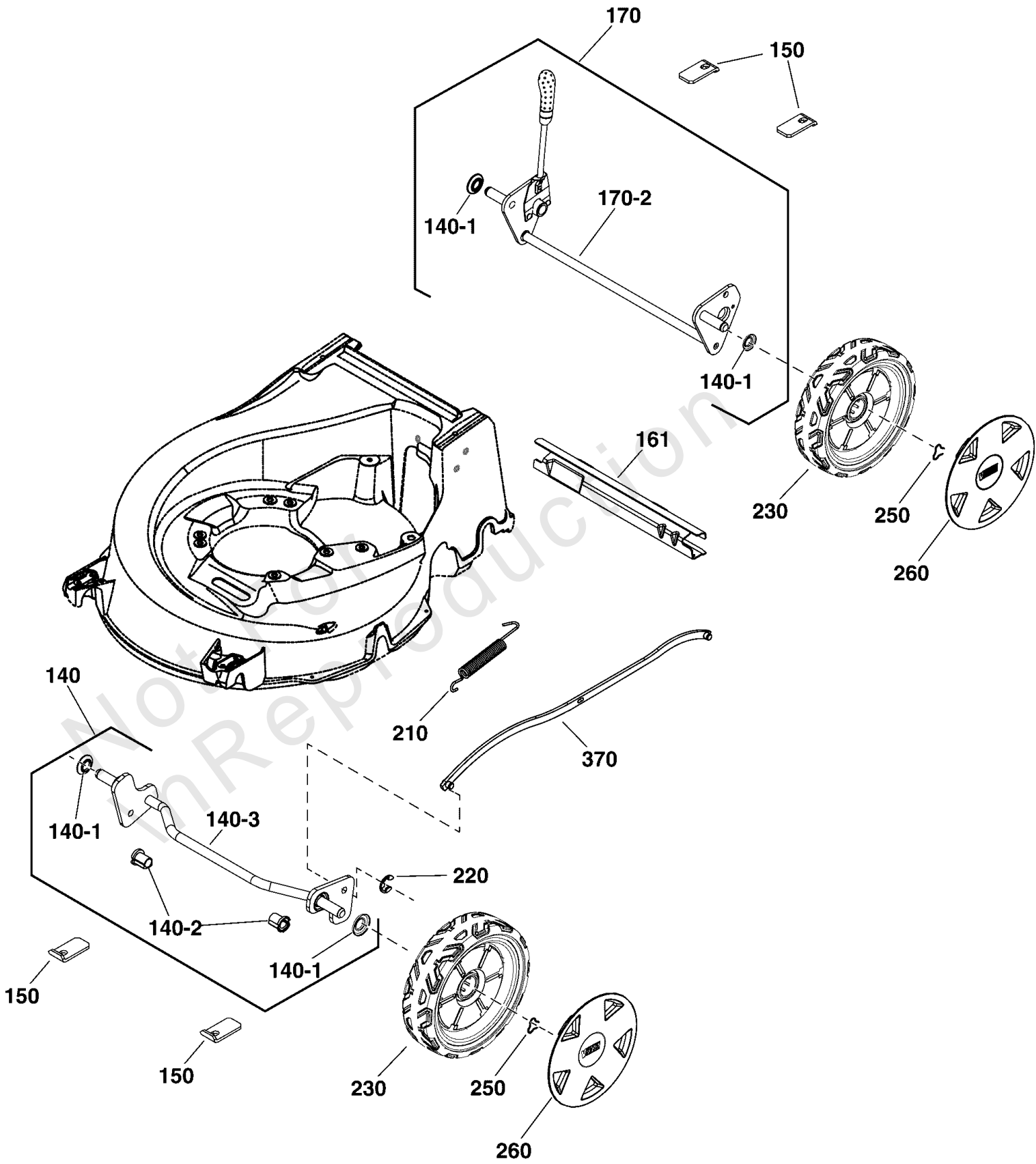
## Handles & Controls Group

REF NO	PART NO	QTY	DESCRIPTION
470	CH88371A	1	THROTTLE CONTROL ASSEMBLY -(Includes Ref. No. 471, 472 & 473)
471	-----	1	CONTROL, Throttle -(Not a serviceable part. Order Ref. No. 470)
472	-----	1	CLAMP, 22mm -(Not a serviceable part. Order Ref. No. 470)
473	-----	1	SCREW, M5 x 18 -(Not a serviceable part. Order Ref. No. 470)
480	CH86202GW	1	HANDLE, Lower, Looped, Black
510	CH88474A	1	UPPER HANDLE ASSEMBLY
620	CH80854GZ	2	PLATE, Saddle, Heavy
630	CH86781P	1	WINGED LOCKING LEVER PACK -(Includes Ref. No. 631, 632 & 633)
631	-----	2	LEVER, Winged Locking -(Not a serviceable part. Order Ref. No. 630)
632	-----	2	WASHER -(Not a serviceable part. Order Ref. No. 630)
633	-----	2	NUT, Nyloc, M8 -(Not a serviceable part. Order Ref. No. 630)
650	HA20490D	2	BOLT, Flanged, Hex, M8x52
655	-----	2	NUT, Nylock, M8

# Wheels & Axles Group

Note: Unless noted otherwise, use the standard torque specifications

Mfg. No: 881907



## ***Wheels & Axles Group***

<b>REF NO</b>	<b>PART NO</b>	<b>QTY</b>	<b>DESCRIPTION</b>
140	CH86262AW	1	AXLE, Front -(Includes Ref. Nos. 140-1, 140-2 & 140-3)
140-1	CH81445A	4	DUST SEAL
140-2	CH86276A	2	BUSHING, Front Axle
140-3	-----	1	AXLE, Front -(Not a serviceable part. Order Ref. No 140)
150	CH88275D	4	AXLE, Plate, Retaining
161	CH87434D	1	SKIRT, Safety, Rear, 19
170	CH87180G	1	AXLE, Rear -(Includes Ref. Nos. 140-1 & 170-2)
170-2	-----	1	AXLE, Rear -(Not a serviceable part. Order Ref. No 170)
210	CH85943A	1	SPRING, Connecting Link
220	HA25131D	2	CIRCLIP, Connecting Link
230	CH87336A	4	WHEEL, Aztec, 8"
250	CH86298A	4	CAPTIVATED CLIP, Wheel
260	CH88271B	4	HUBCAP, Razor, Metallic Silver
370	CH87283D	1	CONNECTING LINK

Not For In-Road Production

# Hardware Identification & Torque Specifications

Torque Specification Chart								
FOR STANDARD METRIC MACHINE HARDWARE (Tolerance ± 20%)								
Property Class	5.6		8.8		10.9		12.9	
	Class 5.6		Class 8.8		Class 10.9		Class 12.9	
Size Of Hardware	in/lbs	Nm.	in/lbs	Nm.	in/lbs	Nm.	in/lbs	Nm.
	ft/lbs		ft/lbs		ft/lbs		ft/lbs	
M3	5.88	.56	13.44	1.28	19.2	1.80	22.92	2.15
M4	13.44	1.28	30.72	2.90	43.44	4.10	52.56	4.95
M5	26.4	2.50	60.96	5.75	5.97	8.10	7.15	9.7
M6	44.64	4.3	7.3	9.9	10.3	14	12.1	16.5
M7	5.2	7.1	12.1	16.5	16.9	23	19.9	27
M8	7.7	10.5	17.7	24	25	34	29	40
M10	15	21	35	48	50	67	59	81
M12	26	36	61	83	86.2	117	103	140
M14	42	58	101	132	136	185	162	220
M16	64	88	147	200	210	285	250	340
M18	89	121	202	275	287	390	346	470
M20	126	171	290	390	405	550	486	660
M22	169	230	390	530	559	745	656	890
M24	217	295	497	375	708	960	840	1140
M27	320	435	733	995	1032	1400	1239	1680
M30	435	590	995	1350	1401	1900	1681	2280
M33	590	800	1349	1830	1902	2580	2278	3090
M36	759	1030	1740	2360	2441	3310	2935	3980
M39	988	1340	2249	3050	3163	4290	3798	5150

Torque Specification Chart						
FOR STANDARD MACHINE HARDWARE (Tolerance ± 20%)						
Hardware Grade	No Marks		SAE Grade 5		SAE Grade 8	
	SAE Grade 2		SAE Grade 5		SAE Grade 8	
Size Of Hardware	in/lbs	Nm.	in/lbs	Nm.	in/lbs	Nm.
	ft/lbs		ft/lbs		ft/lbs	
8-32	19	2.1	30	3.4	41	4.6
8-36	20	2.3	31	3.5	43	4.9
10-24	27	3.1	43	4.9	60	6.8
10-32	31	3.5	49	5.5	68	7.7
1/4-20	66	7.6	8	10.9	12	16.3
1/4-28	76	8.6	10	13.6	14	19.0
5/16-18	11	15.0	17	23.1	25	34.0
5/16-24	12	16.3	19	25.8	29	34.0
3/8-16	20	27.2	30	40.8	45	61.2
3/8-24	23	31.3	35	47.6	50	68.0
7/16-14	30	40.8	50	68.0	70	95.2
7/16-20	35	47.6	55	74.8	80	108.8
1/2-13	50	68.0	75	102.0	110	149.6
1/2-20	55	74.8	90	122.4	120	163.2
9/16-12	65	88.4	110	149.6	150	204.0
9/16-18	75	102.0	120	163.2	170	231.2
5/8-11	90	122.4	150	204.0	220	299.2
5/8-18	100	136	180	244.8	240	326.4
3/4-10	160	217.6	260	353.6	386	525.0
3/4-16	180	244.8	300	408.0	420	571.2
7/8-9	140	190.4	400	544.0	600	816.0
7/8-14	155	210.8	440	598.4	660	897.6
1-8	220	299.2	580	788.8	900	1,244.0
1-12	240	326.4	640	870.4	1,000	1,360.0

The guides and ruler furnished below are designed to help you select the appropriate hardware.

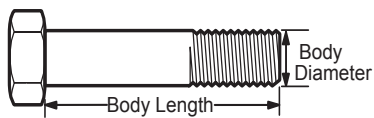


Nut, M8

Thread Diameter (mm)

Inside Diameter (in)      Threads per inch

Nut, 1/2-16



Screw, M8- 1.25 x 25

Thread Diameter (mm)      Distance between threads (mm)      Body Length (mm)

Body Diameter      Threads per inch      Body Length (in)

Screw, 1/2- 16 x 2



## Standard Hardware Sizing

When a washer or nut is identified as 1/2" (M8), this is the *Nominal size*, meaning the *inside diameter* is 1/2 inch (8mm metric thread diameter); if a second number is present it represents the *threads per inch* (distance between threads).

When bolt or capscrew is identified as 1/2 - 16 x 2" (M8 - 1.25 x 50), this means the *Nominal size*, or body diameter is 1/2 inch (8mm metric thread diameter), the second number, 16, represents the *threads per inch*, (*distance between threads*). The final number is the body length of the bolt or screw, 2 inches (50mm).

## NOTES

- These torque values are to be used for all hardware excluding: locknuts, self-tapping screws, thread forming screws, sheet metal screws and socket head setscrews.
- Recommended seating torque values for locknuts:
  - for prevailing torque locknuts - use 65% of grade 5 torques.
  - for flange whizlock nuts and screws - use 135% of grade 5 torques.
- Unless otherwise noted on assembly drawings, all torque values must meet this specification.

## Common Hardware Types

Hex Head Capscrew



Washer



Carriage Bolt



Hex Nut

## Wrench & Fastener Size Guide

1/4" Bolt or Nut Wrench—7/16"	5/16" Bolt or Nut Wrench—1/2"	3/8" Bolt or Nut Wrench—9/16"	7/16" Bolt or Nut Wrench (Bolt)—5/8" Wrench (Nut)—11/16"	1/2" Bolt or Nut Wrench—3/4"
M6 Bolt or Nut Wrench—10mm	M8 Bolt or Nut Wrench—13mm	M10 Bolt or Nut Wrench—17mm	M12 Bolt or Nut Wrench—19mm	M14 Bolt or Nut Wrench—22mm

**VICTA**