



# Parts Manual

Mfg. No: 883241  
82V Lithium-ion 18" Walk Behind Mower





---

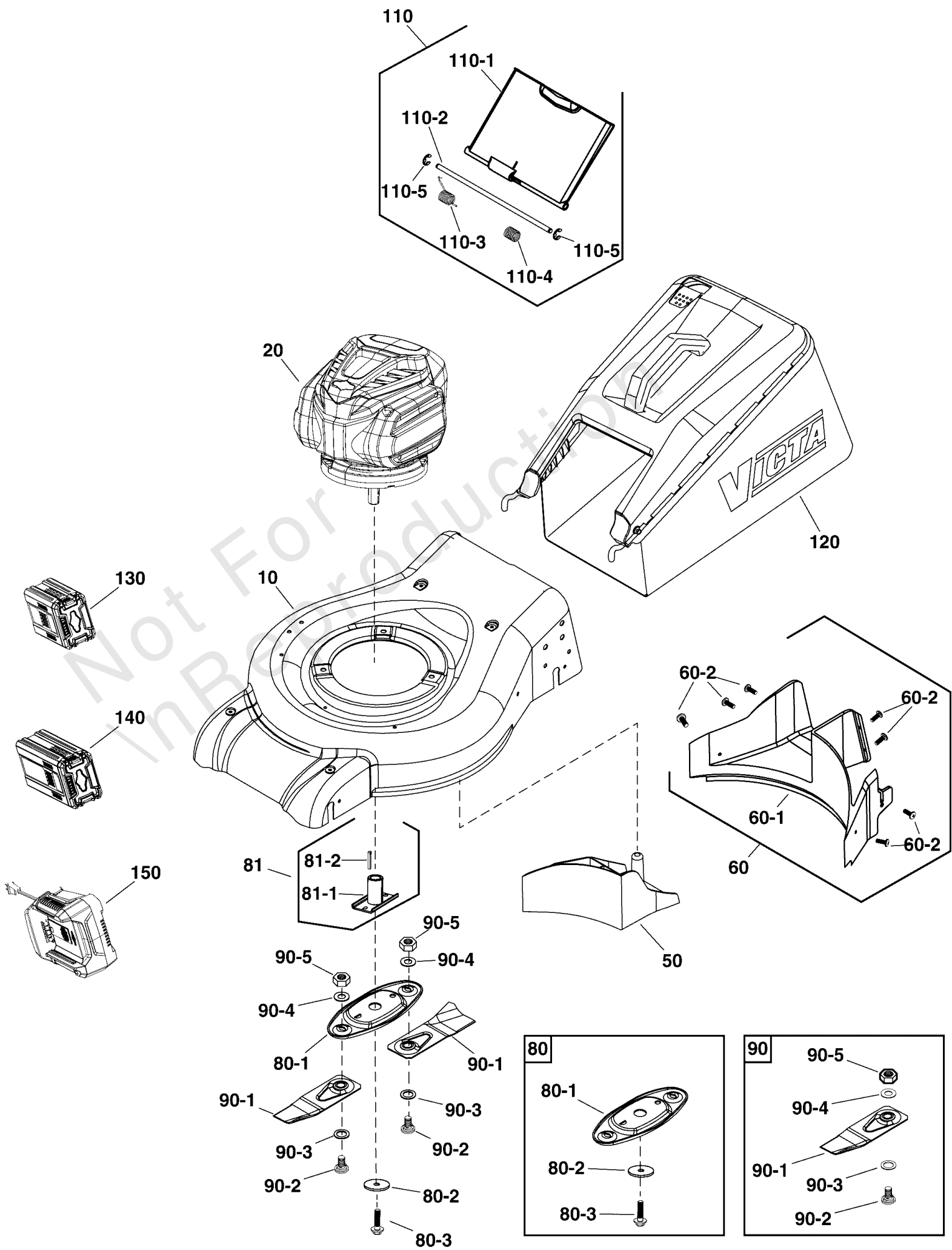
<b>Model Components</b>	<b>Page</b>
Deck & Catcher Group (883241).....	4
Handle & Controls Group (883241).....	6
Wheels Group (883241).....	8
Torque Specification Chart.....	10

Not For  
In Reproduction

# Deck & Catcher Group (883241)

Note: Unless noted otherwise, use the standard torque specifications

Mfg. No: 883241



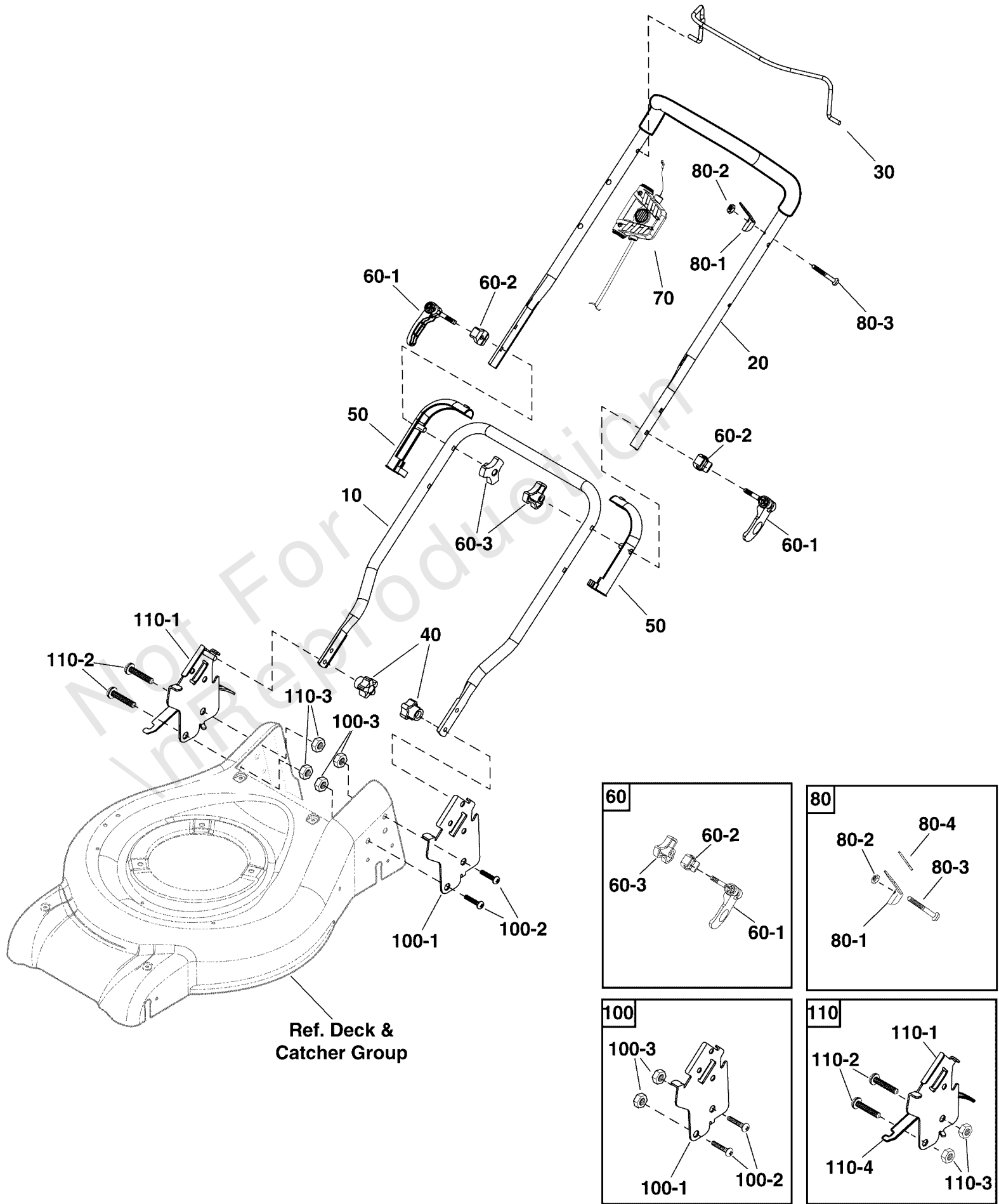
## Deck & Catcher Group (883241)

REF NO	PART NO	QTY	DESCRIPTION
10	BP80271A	1	DECK ASSEMBLY, 18"
20	P0820B000002	1	POWER HEAD ASSEMBLY, 82V
50	BP80026G	1	MULCH PLUG
60	BP80030A	1	DECK INSERT, Rear -(Includes Ref. Nos. 60-1 & 60-2)
60-1	-----	1	DECK INSERT -(Not a serviceable part, order Ref. No. 60)
60-2	-----	1	SCREW, Mulch Plug -(Not a serviceable part, order Ref. No. 60)
80	BP80242A	1	BLADE DISC ASSEMBLY -(Includes Ref. Nos. 80-1, 80-1, 80-3 & 80-4)
80-1	-----	1	BLADE DISC -(Not a serviceable part, order Ref. No. 80)
80-2	-----	1	BRACKET -(Not a serviceable part, order Ref. No. 80)
80-3	-----	1	WASHER, Square -(Not a serviceable part, order Ref. No. 80)
81	BP80240A	1	SLEEVE PACK -(Includes Ref. Nos. 81-1 & 81-2)
81-1	-----	1	SLEEVE -(Not a serviceable part, order Ref. No. 81)
81-2	-----	1	SELEVE BASE -(Not a serviceable part, order Ref. No. 81)
90	CA9241D	7	BLADE PACK -(Includes Ref. Nos. 90-1, 90-2, 90-3, 90-4 & 90-5)
90-1	-----	1	BLADE -(Not a serviceable part, order Ref. No. 90)
90-2	-----	1	BOLT, Blade -(Not a serviceable part, order Ref. No. 90)
90-3	-----	1	WASHER, Blade Tension -(Not a serviceable part, order Ref. No. 90)
90-4	-----	1	WASHER, Belleville -(Not a serviceable part, order Ref. No. 90)
90-5	-----	1	NUT -(Not a serviceable part, order Ref. No. 90)
110	BP80025G	1	REAR FLAP ASSEMBLY -(Includes Ref. Nos. 110-1, 110-2, 110-3, 110-4 & 110-5)
110-1	-----	1	FLAP -(Not a serviceable part, order Ref. No. 110)
110-2	-----	1	ROD, Flap -(Not a serviceable part, order Ref. No. 110)
110-3	-----	1	SPRING, Right -(Not a serviceable part, order Ref. No. 110)
110-4	-----	1	SPRING, Left -(Not a serviceable part, order Ref. No. 110)
110-5	-----	2	CIRCLIP -(Not a serviceable part, order Ref. No. 110)
120	BP80041V	1	GRASS CATCHER ASSY 50L-VICTA
130	1760426	1	BATTERY, 2AH, AU
140	1760427	1	BATTERY, 4AH, AU
150	1760428	1	CHARGER, RAPID, AU
--	1687895	1	2AH BATTERY & CHARGER KIT, AU -(Optional Accessory. Includes items 130 & 150)
--	1687896	1	4AH BATTERY & CHARGER KIT, AU -(Optional Accessory. Includes items 140 & 150)

# Handle & Controls Group (883241)

Note: Unless noted otherwise, use the standard torque specifications

Mfg. No: 883241



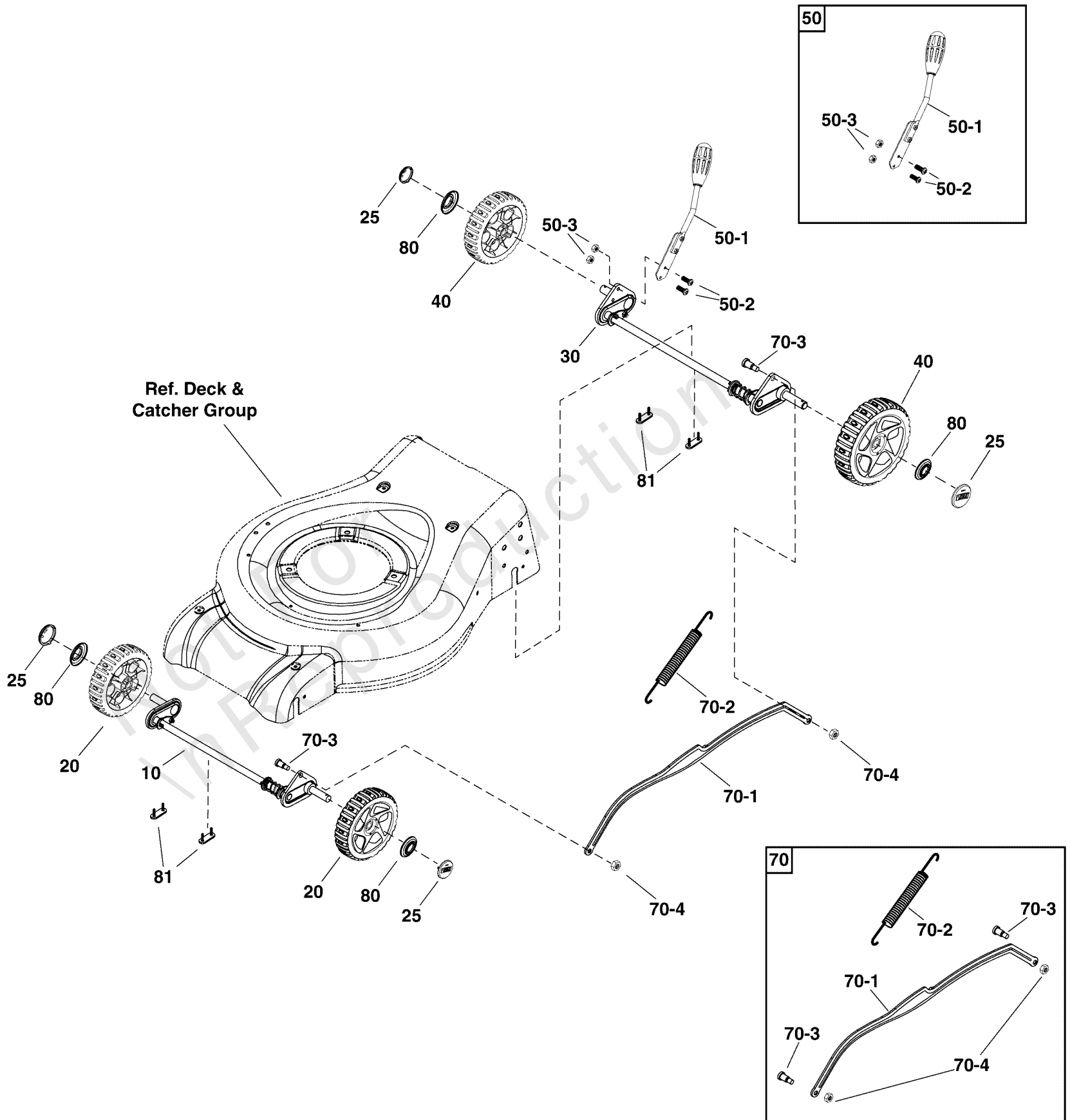
## Handle & Controls Group (883241)

REF NO	PART NO	QTY	DESCRIPTION
10	BP80257A	1	HANDLE, Lower
20	BP80244A	1	HANDLE, Upper
30	BP80247A	1	BAIL, Comfort Grip
40	BP80024A	2	RETAINING KNOB, Lower Handle
50	BP80252A	2	HANDLE INSULATION BRACKET ASSEMBLY
60	BP70007G	2	CAM LOCK ASSEMBLY -(Includes Ref. Nos. 60-1, 60-2 & 60-3)
60-1	-----	1	LEVER -(Not a serviceable part, order Ref. No. 60)
60-2	-----	1	BRACKET -(Not a serviceable part, order Ref. No. 60)
60-3	-----	1	KNOB -(Not a serviceable part, order Ref. No. 60)
70	BP80272A	1	STARTER ASSEMBLY
80	BP80018L	1	BAIL STOP ASSEMBLY -(Includes Ref. Nos. 80-1, 80-2, 80-3 & 80-4)
80-1	-----	1	BRACKET, Bail Stop -(Not a serviceable part, order Ref. No. 80)
80-2	-----	1	NUT -(Not a serviceable part, order Ref. No. 80)
80-3	-----	1	BOLT -(Not a serviceable part, order Ref. No. 80)
80-4	-----	1	PAD, Bail -(Not a serviceable part, order Ref. No. 80)
100	BP80027A	1	BRACKET, Handle, Left -(Includes Ref. Nos. 100-1 & 100-2)
100-1	-----	1	BRACKET, Left -(Not a serviceable part, order Ref. No. 100)
100-2	-----	2	SCREW -(Not a serviceable part, order Ref. No. 100)
100-3	-----	2	NUT -(Not a serviceable part, order Ref. No. 100)
110	BP80042A	1	LOWER RETAINER & SEGMENT -(Includes Ref. Nos. 110-1 & 110-2)
110-1	-----	1	BRACKET, Right -(Not a serviceable part, order Ref. No. 110)
110-2	-----	2	SCREW -(Not a serviceable part, order Ref. No. 110)
110-3	-----	2	NUT -(Not a serviceable part, order Ref. No. 110)
110-4	-----	1	LOWER RETAINER & SEGMENT -(Not a serviceable part, order Ref. No. 110)

# Wheels Group (883241)

Note: Unless noted otherwise, use the standard torque specifications

Mfg. No: 883241





## Wheels Group (883241)

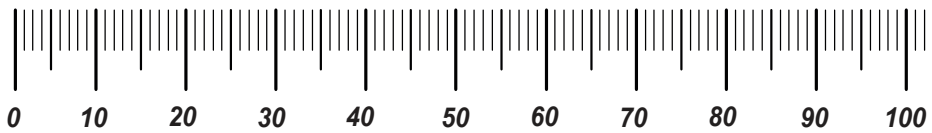
REF NO	PART NO	QTY	DESCRIPTION
10	BP80033A	1	AXLE ASSEMBLY, Front
20	BP80032CC	2	WHEEL, 7"
25	BP70057A	4	HUBCAP, Victa
30	BP80029A	1	AXLE ASSEMBLY, Rear
40	BP80028CC	2	WHEEL ASSEMBLY, Rear
50	BP80023A	1	HANDLE, Height Adjustment -(Includes Ref. Nos. 50-1, 50-2 & 50-3)
50-1	-----	1	HANDLE -(Not a serviceable part. Order Ref. No. 50)
50-2	-----	4	SCREW -(Not a serviceable part. Order Ref. No. 50)
50-3	-----	4	NUT -(Not a serviceable part. Order Ref. No. 50)
70	BP80031A	1	CONLINK ASSEMBLY -(Includes Ref. Nos. 70-1, 70-2, 70-3 & 70-4)
70-1	-----	1	CONNECTING LINK -(Not a serviceable part. Order Ref. No. 70)
70-2	-----	1	SPRING -(Not a serviceable part. Order Ref. No. 70)
70-3	-----	2	PIN -(Not a serviceable part. Order Ref. No. 70)
70-4	-----	2	NUT -(Not a serviceable part. Order Ref. No. 70)
80	BP80003A	4	DUST SEAL
81	BP70063A	4	RETAINING PLATE ASSEMBLY

# Hardware Identification & Torque Specifications

Torque Specification Chart								
FOR STANDARD METRIC MACHINE HARDWARE (Tolerance ± 20%)								
Property Class	5.6		8.8		10.9		12.9	
	Class 5.6		Class 8.8		Class 10.9		Class 12.9	
Size Of Hardware	in/lbs	Nm.	in/lbs	Nm.	in/lbs	Nm.	in/lbs	Nm.
	ft/lbs		ft/lbs		ft/lbs		ft/lbs	
M3	5.88	.56	13.44	1.28	19.2	1.80	22.92	2.15
M4	13.44	1.28	30.72	2.90	43.44	4.10	52.56	4.95
M5	26.4	2.50	60.96	5.75	5.97	8.10	7.15	9.7
M6	44.64	4.3	7.3	9.9	10.3	14	12.1	16.5
M7	5.2	7.1	12.1	16.5	16.9	23	19.9	27
M8	7.7	10.5	17.7	24	25	34	29	40
M10	15	21	35	48	50	67	59	81
M12	26	36	61	83	86.2	117	103	140
M14	42	58	101	132	136	185	162	220
M16	64	88	147	200	210	285	250	340
M18	89	121	202	275	287	390	346	470
M20	126	171	290	390	405	550	486	660
M22	169	230	390	530	559	745	656	890
M24	217	295	497	375	708	960	840	1140
M27	320	435	733	995	1032	1400	1239	1680
M30	435	590	995	1350	1401	1900	1681	2280
M33	590	800	1349	1830	1902	2580	2278	3090
M36	759	1030	1740	2360	2441	3310	2935	3980
M39	988	1340	2249	3050	3163	4290	3798	5150

Torque Specification Chart						
FOR STANDARD MACHINE HARDWARE (Tolerance ± 20%)						
Hardware Grade	No Marks		SAE Grade 5		SAE Grade 8	
	SAE Grade 2		SAE Grade 5		SAE Grade 8	
Size Of Hardware	in/lbs	Nm.	in/lbs	Nm.	in/lbs	Nm.
	ft/lbs		ft/lbs		ft/lbs	
8-32	19	2.1	30	3.4	41	4.6
8-36	20	2.3	31	3.5	43	4.9
10-24	27	3.1	43	4.9	60	6.8
10-32	31	3.5	49	5.5	68	7.7
1/4-20	66	7.6	8	10.9	12	16.3
1/4-28	76	8.6	10	13.6	14	19.0
5/16-18	11	15.0	17	23.1	25	34.0
5/16-24	12	16.3	19	25.8	29	34.0
3/8-16	20	27.2	30	40.8	45	61.2
3/8-24	23	31.3	35	47.6	50	68.0
7/16-14	30	40.8	50	68.0	70	95.2
7/16-20	35	47.6	55	74.8	80	108.8
1/2-13	50	68.0	75	102.0	110	149.6
1/2-20	55	74.8	90	122.4	120	163.2
9/16-12	65	88.4	110	149.6	150	204.0
9/16-18	75	102.0	120	163.2	170	231.2
5/8-11	90	122.4	150	204.0	220	299.2
5/8-18	100	136	180	244.8	240	326.4
3/4-10	160	217.6	260	353.6	386	525.0
3/4-16	180	244.8	300	408.0	420	571.2
7/8-9	140	190.4	400	544.0	600	816.0
7/8-14	155	210.8	440	598.4	660	897.6
1-8	220	299.2	580	788.8	900	1,244.0
1-12	240	326.4	640	870.4	1,000	1,360.0

The guides and ruler furnished below are designed to help you select the appropriate hardware.

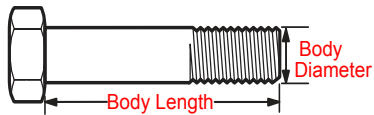


Nut, M8

Thread Diameter (mm)

Inside Diameter (in)      Threads per inch

Nut, 1/2-16

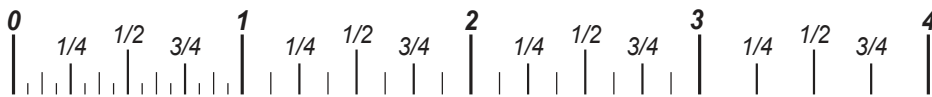


Screw, M8- 1.25 x 25

Thread Diameter (mm)      Distance between threads (mm)      Body Length (mm)

Body Diameter      Threads per inch      Body Length (in)

Screw, 1/2- 16 x 2



## Standard Hardware Sizing

When a washer or nut is identified as 1/2" (M8), this is the *Nominal size*, meaning the *inside diameter* is 1/2 inch (8mm metric thread diameter); if a second number is present it represents the *threads per inch* (distance between threads).

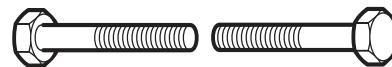
When bolt or capscrew is identified as 1/2 - 16 x 2" (M8 - 1.25 x 50), this means the *Nominal size*, or body diameter is 1/2 inch (8mm metric thread diameter), the second number, 16, represents the *threads per inch*, (*distance between threads*). The final number is the body length of the bolt or screw, 2 inches (50mm).

## NOTES

- These torque values are to be used for all hardware excluding: locknuts, self-tapping screws, thread forming screws, sheet metal screws and socket head setscrews.
- Recommended seating torque values for locknuts:
  - for prevailing torque locknuts - use 65% of grade 5 torques.
  - for flange whizlock nuts and screws - use 135% of grade 5 torques.
- Unless otherwise noted on assembly drawings, all torque values must meet this specification.

## Common Hardware Types

Hex Head Capscrew



Washer



Carriage Bolt



Hex Nut

## Wrench & Fastener Size Guide

1/4" Bolt or Nut Wrench—7/16"	5/16" Bolt or Nut Wrench—1/2"	3/8" Bolt or Nut Wrench—9/16"	7/16" Bolt or Nut Wrench (Bolt)—5/8" Wrench (Nut)—11/16"	1/2" Bolt or Nut Wrench—3/4"
M6 Bolt or Nut Wrench—10mm	M8 Bolt or Nut Wrench—13mm	M10 Bolt or Nut Wrench—17mm	M12 Bolt or Nut Wrench—19mm	M14 Bolt or Nut Wrench—22mm

**VICTA**