



Not for
Reproduction

**Operator's
Manual
Victa
460 Utility
Lawnmowers**



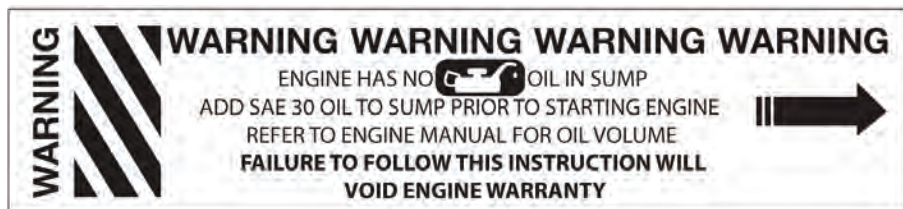
WARNING! Read this manual before operating your Victa Lawnmower.



IMPORTANT INFORMATION

Engine Oil

The following warning labels are attached to your mower on purchase. Please read labels before discarding.



Safety Marking and Symbols



Warning!



Be careful of objects being thrown out!



Read the directions for use before operating the machine.



Read the manual before carrying out any maintenance work.



Wear safety goggles, a helmet and ear protection.



Wear sturdy, nonslip footwear.



Wear safety gloves.



Protect the machine from rain and damp.

CONTENTS & SYMBOLS



Table of Contents



Important Notes

1

Unit Details



Safety & Handling

2

Safety Instructions
Hazards
Personal Safety Equipment



Assembly Procedures

5

Features
Handle Knobs/Toggles
Throttle Control



Operating Instructions

7

Starting & Stopping
Mulching Plug

Maintenance & Care

9



Cleaning
Maintenance Chart

Questions & Answers

11



Troubleshooting

Warranty - See Warranty Leaflet





IMPORTANT NOTES

Congratulations on your purchase of a Victa lawnmower. This instruction manual will aid in the assembly, operation and maintenance of your new lawnmower.

Please read this manual carefully to ensure safety and the long life of your product.

Please read the Warranty leaflet carefully.

Keep this operators manual in a safe place for future reference, or if service is required on your unit.



Do not operate the unit before reading this manual.

Do not operate before reading the 'Engine Manual'.

Not for
Reproduction



Safety Instructions

Transporting the mower

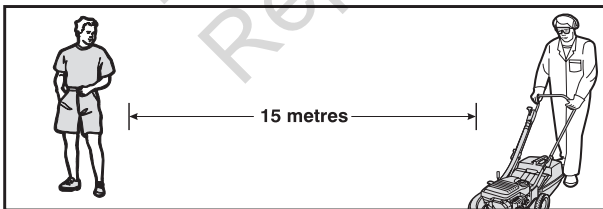
- Turn the engine off, by moving the throttle lever to the 'STOP' position and switching the fuel tap off (where fitted).
- Disconnect the spark plug lead and wedge it well away from the spark plug.
- Do not transport the mower in a vehicle if there is fuel in the fuel tank.

Before using the mower

- Do not allow children, or people unfamiliar with these instructions, to use the mower.
- Ensure that the blade assembly is not worn or damaged. Always replace worn or damaged blades and bolts in sets to preserve correct balance. Damaged or worn blades and bolts are major hazards. Use genuine Victa spare parts only.
- Please note: blades may be tucked under blade disc for safety and transport reasons before use. Once the engine is started they will relocate themselves for cutting.
- Check all fasteners regularly. Always ensure the mower is in a safe operating condition. Use genuine spare parts only.
- Check for grass build up around the engine and muffler which may cause overheating and/or a fire hazard.
- Do not start the engine unless the rear flap and/or chute is securely in position.
- Know the mower controls. Learn how to stop the engine quickly in an emergency by moving the throttle to the 'STOP' position or releasing the brake bale arm on models fitted with presence control

Operating the mower

- Do not mow while people, especially children, or pets are in the vicinity of the mower or within the mowing area. Ensure that bystanders are a minimum of 15 metres away.



- Do not mow in bare feet or open shoes. Wear long trousers heavy footwear and eye protection.



SAFETY & HANDLING

Safety Instructions cont'd

- Make sure the lawn is clear of sticks, stones, bones, wire and debris before mowing. These could be thrown by the blades and cause injury or damage.
- Start the engine carefully with feet well clear of blades. Do not tilt the mower when starting the engine.
- Stop the engine whenever you leave the mower, even for a moment.
- Mow only in good daylight.
- Keep hands and feet away from rotating parts beneath mower when engine is running.
- Do not over speed the engine or alter the governor settings. Excessive engine speed is dangerous and shortens mower life.
- **Never lift, carry or tilt the mower when the engine is running.**
- Stop the engine before pushing the mower across gravel, paths or roads. Stop the engine before the mower leaves the lawn.
- Stop the engine before adjusting the cutting height.
- Mow across the face of a slope, never up or down. Use extreme caution when changing direction on a slope. Do not mow on excessively steep slopes.
- Never mow by pulling the mower towards you. You may slip and pull the mower on top of your feet. Never mow grass while walking backwards.
- Walk with the mower, never run.
- The safety distance determined by the guiding handles must be maintained at all times.
- At the conclusion of mowing, always turn the mower off using the throttle lever then turn fuel tap off (where fitted). To stop the mower on models with presence control, release the brake bale arm.
- Do not operate the mower in confined spaces where exhaust fumes (carbon monoxide) can collect.
- Stop the engine and disconnect spark plug wire before clearing blockages, checking, or working on the mower.
- If you strike an obstruction, stop the engine and check the blades for damage.
- Bystanders must be at least 15 metres away during operation of the mower, as rocks and other materials may be thrown at high velocities. Switch the unit off immediately if approached.
- Never use the mower unless the side chute is correctly assembled and fitted.
- Wear suitable eye protection when operating mower.
- Never use an electrically powered mower in the rain or when grass is wet.

Maintaining the mower

- If the mower begins to vibrate abnormally, or if it strikes a foreign object - STOP the engine. Disconnect the spark plug lead from the spark plug and carefully wedge it well away from the spark plug. Inspect the mower and blades for any damage.
- Replace worn or faulty mufflers as they adversely affect engine performance and increase emissions.
- Victa recommends that all maintenance, repair and inspection work be carried out by a Victa Authorised Service Centre.
- Store the mower in a well ventilated area, away from any naked flames such as those found in hot water heaters.



Safety Instructions cont'd

Refuelling the mower

- Refuel the mower outdoors only.
- Do not smoke while operating or refuelling the mower. Never add fuel or remove the fuel cap while the engine is running or hot. If fuel is spilt, do not start the engine. Move the mower away from the area of the spill. Do not create any source of ignition until fuel vapours have dissipated.
- Store fuel in a cool place and in a container specifically designed for the purpose. Victa supplies a 5 litre fuel can as an optional extra. Plastic containers are unsuitable, except those specifically designed to hold fuel.

Hazards

The following safety precautions must be strictly observed to avoid the risk of damage or personal injury.

- Do not smoke while operating or refuelling the mower. Never add fuel or remove the fuel cap while the engine is running or hot. If fuel is spilt, do not start the engine. Move the mower away from the area of the spill. Do not create any source of ignition until the fuel vapours have dissipated.
- Check all fasteners regularly. Always ensure that the mower is in safe operating condition. Use genuine spare parts only.
- Do not operate the mower in confined spaces where exhaust fumes (carbon monoxide) can collect.
- Stop the engine whenever you leave the mower, even if only for a moment.
- Never lift, carry or tilt the mower when the engine is running.
- Bystanders must be at least 15 metres away during operation of the mower, as rocks and other materials may be thrown at high velocities. Switch the unit off immediately if approached.
- Never use the mower unless the side chute is correctly assembled and fitted.

Personal Protective Equipment

Recommended personal protection equipment to wear when working with your lawnmower:



A set of ear muffs.



A pair of safety boots.



A pair of protective gloves.

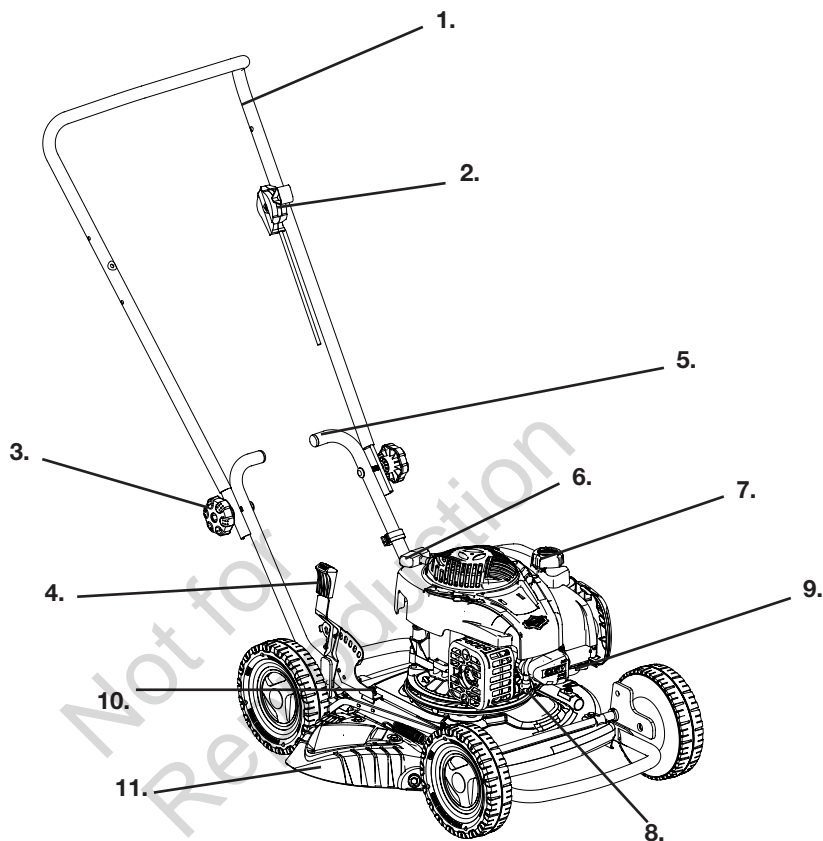


Eye protection.



PRODUCT FEATURES

Features



1. Upper Handle	5. Lower Handle	9. Primer *
2. Throttle Control	6. Pull Start	10. Deck
3. Handle Knob/ Lever	7. Fuel Cap	11. Side Chute
4. Height Adjust Lever	8. Spark Plug	

* Present on specific models only



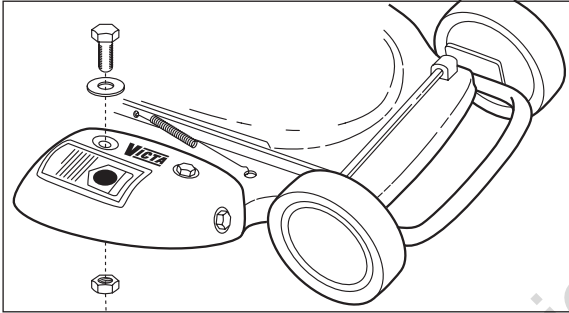
Utility Side Chute

Side chute must be fitted before operating mower



SAFETY: Before Operating mower: Disconnect spark plug and fit Side Chute as shown. Do not operate mower unless Side Chute supplied by VICTA is properly fitted.

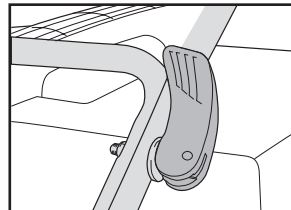
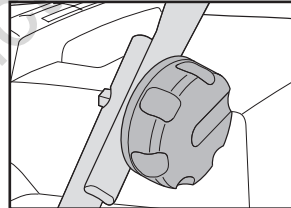
* Bolts, washers, nuts and side chute (guard) supplied



Attaching upper handle

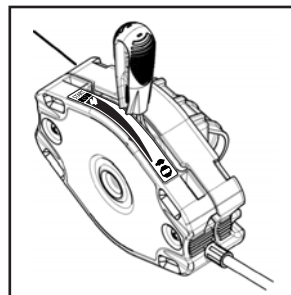
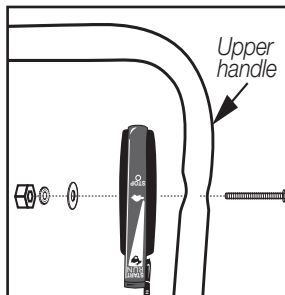
Mowers will have either knobs or toggles to fix the handles in position. Refer to the instruction below which is specific to your particular model.

- Attach the upper handles using the knobs and bolts provided. The knobs should be on the outside.
- Tighten the handle knobs to secure the upper handle to the lower handle.
- Flip the handle toggles to secure the upper handle to the lower handle.
- On some models the knobs/toggles have to be consumer fitted.



Attaching the throttle control

- Attach the throttle control to the inside of the upper handle, so that the lever lifts upward toward the user.





OPERATING INSTRUCTIONS

Starting & Stopping

These notes supplement the information on starting and stopping your lawnmower engine found in the Engine Operator's Manual supplied with your lawnmower. Please read your Engine Operator's Manual prior to attempting to start your engine for the first time. If your engine model is not covered by the notes below please read the Engine Manual supplied with your lawnmower.

- Always check your engine oil level before starting the engine at the start of mowing.
- Check that the spark plug is connected before attempting to start the engine.
- Ensure you have fresh petrol in the engine's fuel tank.
- Ensure the fuel tap, where fitted is ON before attempting to start the engine.
- **For your safety, keep your hands and feet clear of the mower blades at all times.**

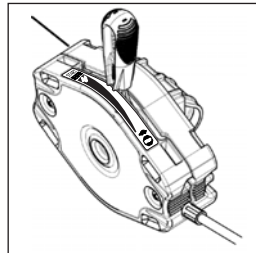
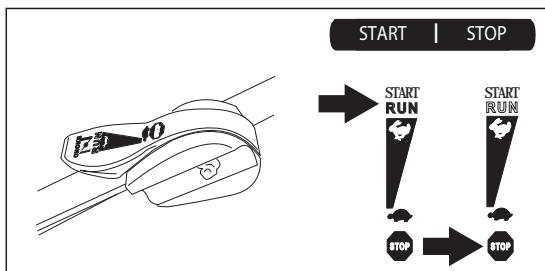
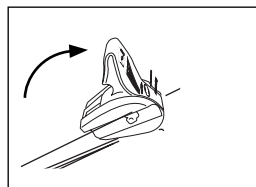
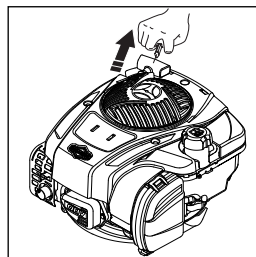
Briggs & Stratton Pull Start Engines

Briggs and Stratton engines may or may not have a primer. The primer, where fitted is in the centre of the air filter cover.

Starting – Primer Engines:

1. Push the throttle control to the **START/RUN** position.
2. Push the Primer Button three times. This step should not be required on a warm engine.
3. Firmly hold the starter handle and pull the starter slowly until resistance is felt, then pull the cord rapidly.
4. If the engine does not start after a couple of repeated attempts, repeat the priming step before further starting attempts.
5. Return the starter handle gently. Do not allow the starter handle to fly back and strike the engine cowl as damage may result.

To stop the engine Move the throttle control lever to the STOP position.





Starting & Stopping

Starting – Non-Primer Engines:

1. Push the throttle control to the START/RUN position.
2. Firmly hold the starter handle and pull the starter slowly until resistance is felt, then pull the cord rapidly.
3. The engine should start after a couple of attempts.
4. Return the starter handle gently. Do not allow the starter handle to fly back and strike the engine cowling as damage may result.

To stop the engine, move the throttle control to the stop position.

Not for
Reproduction



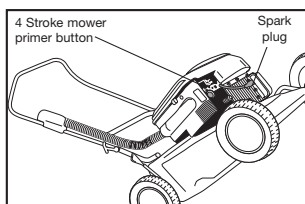
MAINTENANCE & CARE

Cleaning

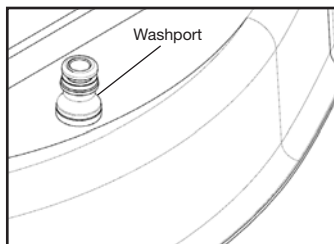


Before cleaning the mower, ensure the throttle lever is in the 'STOP' position. Turn the fuel tap off, disconnect the spark plug lead and wedge it well away from the spark plug, and remove the battery on Instart models.

- Remove grass build up from the air intakes on the top of the mower cowl, around the engine and carburettor, and around the air filter body.
- The underside of the mower should be cleaned regularly to remove dirt and grass build up; any build up will adversely affect performance and can promote corrosion on steel baseplates.



- **When cleaning the underside of the mower, always tilt handle back to ground level so the front wheels are off the ground and spark plug is pointing to the sky. Tilting in other direction can cause the oil to contaminate the fuel & damage air filter causing starting difficulties.**
- A hose may be used on the underside of your mower ONLY. Care must be taken to NOT get water into the engine, as it may damage the magneto or get into the fuel system.
- To prevent chassis corrosion, the underside of your mower should be cleaned immediately after mowing an area which has been recently dressed with sulphate of ammonia or fertiliser.
- After cleaning, run the engine briefly to dry off excess moisture before storing.



(Only on some baseplate models)

Storage

Fuel can become stale when stored over 30 days. Stale fuel causes acid and gum deposits to form in the fuel system. Drain the fuel for long term storage.



Maintenance Chart

Features	Requirements	Before Start	After Finish	Refuelling	Weekly	Monthly	If Faulty	If Damaged/Faulty	As Required
Lawnmower	Visual inspection (leaks)	•		•					
Throttle lever	Check operation		•						
Cutting system (Blades)	Inspect and check assembly	•							
	Replace*						•	•	
Chassis	Check for buildup of grass		•						
	Clean		•						
	Replace							•	
Air filter	Check	•							
	Clean	•							
	Replace						•	•	
Engine cylinder fins	Clean					•			•
Spark plug	Replace						•		•
All accessible fasteners	Clean	•							
	Retighten								•
Engine mounting bolts	Check					•			
	Retighten								•
Muffler	Inspect					•		•	
	Replace							•	•
Check oil	Check	•							

* Victa recommends that certain maintenance, repair and inspection work be carried out by a Victa Authorised Service Centre.



Before carrying out maintenance, STOP the engine, disconnect the spark plug lead from the spark plug and move it well away from the spark plug. Remove the starter key from the ignition switch of Keystart models and disconnect the battery.



Never attempt maintenance that is not outlined in this manual. All repair work must be carried out by a Victa Authorised Service Centre.



MAINTENANCE & CARE

Troubleshooting

Problem	Possible Cause	Correction
Does not start	Out of fuel	Refill tank with correct fuel
	Throttle lever in incorrect position	Refer to 'Starting Procedures'
	Spark plug lead not connected	Press terminal cover fully onto the spark plug
	Engine flooded	Top up with correct oil.
	Dirty spark plug	Replace spark plug
	Stale fuel in tank from last season	Contact Service Centre
	Water in fuel tank	Contact Service Centre
	Service required	Contact Service Centre
	Engine worn	Contact Service Centre
	Low or no oil (4 stroke)	Top up with correct oil
	Battery discharged - Electric start models	Charge battery
Loss of power	Incorrect throttle setting	Set throttle lever in the 'RUN' position
	Dirty air filter element	Clean or replace
	Too low height adjustment	Raise cutting height
	Low or no oil (4 stroke)	Top up with correct oil
Excessive vibrations	Blades out of balance	Replace both blades
	Bent or damaged disc or blade	Replace disc or both blades
	Looseness of assembly	Check all nuts for tightness
	Low or no oil (4 stroke)	Top up with correct oil
Engine stops frequently	Fuel supply blocked	Check fuel line
	Engine worn or seized	Contact Service Centre
	Fuel cap not venting	Check / Loosen cap slightly
	Low or no oil (4 stroke)	Top up with correct oil

If running difficulties continue, please contact your closest Victa Authorised Service Centre. You will find the latest Service Centre listing on the Victa website, www.victa.com.au or contact Victa Customer Service 1800 356 632.



Blade Replacement

For Your Safety

- Before starting the mower check blades and bolts for damage or wear.
- Victa recommends that all maintenance, repair and inspection work be carried out by a Victa Authorised Service Centre.

Worn and damaged blades are major hazards.



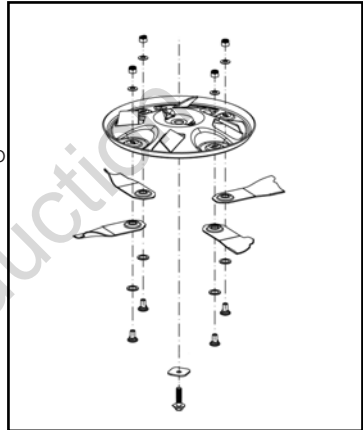
- Stop the engine and disconnect the spark plug lead before fitting new blades.
- Work from the grasscatcher flap.

With the rear flap secured, undo the blade nut, applying upward pressure to the bolt head into the blade disc. (the head of the bolt will not rotate due to the diamond shape in the underside of the head).

Assembly: Fit as per the drawing remembering to push the head of the bolt into the blade disc (this will stop the bolt head from turning). Ensure correct order of assembly.

DO NOT lay mower on its side (4 Stroke models).

- We recommend changing blades, bolts, nuts and washers as a set. Metal fatigue and damage may occur which may not be visible to the operator. Always replace all blades to ensure correct engine balance, reducing vibration and wear. Tighten nuts on blade bolts to 14-19 Nm.
- **Always turn the nut to check tightness, not the bolt.**



Use only genuine replacement parts made and guaranteed by Victa. Insist on them from your parts and service dealer. Detailed fitting instructions are printed on genuine Victa blade packs. Use of non-genuine blades may void your warranty, and could result in damage or injury.

Not for
Reproduction

©2020 Briggs & Stratton
Victa, Victa Razor & Aerogrip are
trademarks of Briggs & Stratton Australia Pty. Ltd.

ABN 13 006 576 856

All rights reserved. No part of this booklet may be reproduced by any means
without prior written permission. All information herein is subject to change without notice.

80095389

2281	B	PL	TC	REVISED	25/06/20
2281	A	PL	TC	OPERATORS MANUAL	13/05/20
ECN	ISS	DRN	CKD	DESCRIPTION	DATE