

INTRODUCTION

Thank you for purchasing a Honda mini-tiller.

This manual covers the operation and maintenance of the Honda FG110 mini-tiller.

We want to help you get the best results from your new tiller and to operate it safely. This manual contains the information on how to do that; please read it carefully.

This manual should be considered a permanent part of the tiller and should remain with it if it is resold.

If you have a problem or questions concerning the tiller, contact your supplying dealer.

We recommend that you read the warranty policy to fully understand your rights and responsibilities. The warranty policy is a separate document provided by your dealer.

Honda Power Equipment Mfg., Inc. reserves the right to make changes at any time without notice and without incurring any obligation.

No part of this publication may be reproduced without written permission.

SAFETY MESSAGES

Your safety and the safety of others are very important. And using this tiller is an important responsibility.

To help you make informed decisions about safety, we have provided operating procedures and other information on labels and in this manual. This information alerts you to potential hazards that could hurt you or others.

Of course, it is not practical or possible to warn you about all the hazards associated with operating or maintaining a tiller. You must use your own good judgment.

Pay special attention to statements preceded by the following words:

⚠ DANGER You WILL be KILLED or SERIOUSLY HURT if you don't follow instructions.

⚠ WARNING You CAN be KILLED or SERIOUSLY HURT if you don't follow instructions.

⚠ CAUTION You CAN be HURT if you don't follow instructions.

Each message tells you what the hazard is, what can happen, and what you can do to avoid or reduce injury.

Damage Prevention Messages

You will also see other important messages that are preceded by the following word:

NOTICE Your mini-tiller or other property can be damaged if you don't follow instructions.

The purpose of these messages is to help prevent damage to your mini-tiller, other property, or the environment.

HONDA

OWNER'S MANUAL FG110



⚠ WARNING: ⚠
The engine exhaust from this product contains chemicals known to the State of California to cause cancer, birth defects, or other reproductive harm.

CONTENTS

INTRODUCTION	1	SERVICING YOUR TILLER	7
SAFETY MESSAGES.....	1	MAINTENANCE SAFETY.....	8
TILLER SAFETY.....	2	MAINTENANCE SCHEDULE ..	8
IMPORTANT SAFETY		ENGINE MAINTENANCE	8
INFORMATION.....	2	REFUELING	11
ATTACHMENTS AND		TRANSMISSION LUB	12
MODIFICATIONS	2	TRANSPORTING	13
IMPORTANT MESSAGE TO		STORAGE	13
EMPLOYERS	2	TAKING CARE OF UNEXPECTED	
IMPORTANT MESSAGE TO		PROBLEMS.....	14
PARENTS	2	TECHNICAL INFORMATION	15
SAFETY LABEL LOCATION ...	3	SERIAL NUMBER LOC	15
CONTROL LOCATIONS	3	CARBURETOR	
SETTING UP YOUR NEW TILLER		MODIFICATION FOR HIGH	
BEFORE OPERATION.....	4	ALTITUDE OPERATION	15
ARE YOU READY TO OPERATE		EMISSION CONTROL	
THE TILLER?	4	SYSTEM	15
IS YOUR WORKING AREA		SPECIFICATIONS.....	16
READY?	4	CONSUMER INFORMATION	16
IS YOUR TILLER		CUSTOMER SERVICE	
READY TO GO?.....	4	INFORMATION.....	16
OPERATION.....	5	DEALER LOCATOR	
SAFE OPERATING		INFORMATION.....	LAST PAGE
PRECAUTIONS.....	5		
STARTING THE ENGINE.....	6		
STOPPING THE ENGINE	6		
TILLER OPERATION	7		

ENGLISH

FRANÇAIS

ESPAÑOL

DEUTSCH

ITALIANO

NEDERLANDS



TILLER SAFETY

IMPORTANT SAFETY INFORMATION

Most injuries or property damage can be prevented if you follow all instructions in this manual and on the tiller. The most common hazards are discussed below, along with the best way to protect yourself and others.

Honda Tiller Usage

Honda tillers are designed to give safe and dependable service if operated according to instructions and intended use.

Honda tillers are intended to be used by an experienced, trained operator who is familiar with the use of power equipment. Do not allow a child or an inexperienced, untrained operator to use this tiller. Operating this equipment requires special effort on your part to ensure your safety and the safety of others. Read and understand this owner's manual.

Avoid Rotating Tines

The rotating tines can cause injury. Keep away from the tine shield whenever the engine is running. If you need to adjust the tines or work around the tines for any reason, always stop the engine. Disconnect the spark plug cap if you need to clean or handle the tines.

Clear Tilling Area

The tiller tines can throw rocks and other objects with enough force to cause injury. Before tilling, carefully inspect the area and remove all large debris.

Keep Shields in Place

Guards and shields are designed to protect you from being hit by thrown objects. They also help protect you from hot engine parts and moving components. For your safety and the safety of others, keep all guards and shields in place when operating the tiller.

Refuel with Care

Petrol is extremely flammable and petrol vapor can explode. Refuel only outdoors, in a well-ventilated area, with the engine off. Never smoke near petrol, and keep other flames and sparks away. Always store petrol in an approved container.

Wear Protective Clothing

Wearing protective clothing will reduce your risk of injury. Long pants and eye protection reduce the risk of injuries from thrown objects. Sturdy shoes with aggressive soles will help protect your feet and give you better traction on slopes or uneven ground. Clothing worn by the operator should be close-fitting. Loose clothing should not be permitted because it may get caught in moving parts. Tie up or restrain long hair.

Turn Engine Off When Not Tilling

If you need to leave the tiller for any reason, even just to inspect the area ahead, always stop the engine.

ATTACHMENTS AND MODIFICATIONS

Do not make any modifications to your tiller. Modifying your tiller, or installing non-Honda attachments, can make your tiller unsafe.

If you need attachments for your tiller, use only Honda Genuine attachments. These products have been designed for your tiller.

Non-Honda attachments are usually designed for universal applications. Although aftermarket attachments may fit on your tiller, they may not meet factory specifications and could make your tiller unsafe.

IMPORTANT MESSAGE TO EMPLOYERS

As an employer, you have special responsibilities to the people who work for you.

Before you ask anyone to operate this tiller, you need to determine whether the person is old enough, large enough, and strong enough to safely handle and control the tiller.

If you decide the person is, make sure the employee reads and understands all instructions and warnings in this manual, and on the labels before operating the tiller.

Allow adequate time for hands-on training by a qualified instructor, and personally supervise practice sessions until you feel sure the employee is ready to operate the tiller.

Also be sure employees wear proper clothing and have eye protection and any other gear that may be required by local ordinances or your insurance company.

Remember, too, that you are responsible for keeping the tiller properly maintained and in safe operating condition.

Your commitment to safety on the job can help prevent injuries and result in longer and more productive years of service.

IMPORTANT MESSAGE TO PARENTS

Your child's safety is very important to Honda. Read this message if you decide to permit your child to operate this tiller. Tillers are tools, not toys. As with any equipment, bad judgements can result in serious injuries. You can prevent injuries by making good decisions about if, when, and how your child operates this equipment.

The first question you'll need to ask is whether your child is capable of operating this tiller safely. Remember, young people vary widely, and **AGE IS NOT THE ONLY FACTOR**. Physically, a child must be **LARGE ENOUGH AND STRONG ENOUGH** to easily start the tiller and control its direction. The child also needs enough size, strength, and coordination to comfortably reach and operate the controls.

Another, tougher question you need to ask is if your child has enough **MATURITY AND RESPONSIBILITY** to safely operate this tiller. Does the young person think through problems and come to logical solutions? Anyone who takes unnecessary risks and does not obey rules should not operate this tiller.

If you decide that your child can handle the tiller safely, carefully read the owner's manual with him or her. Make sure you both understand all instructions and safety information. Also, be sure your child wears sturdy shoes and other protective clothing when operating or handling the tiller.

SUPERVISION is also very important. Walk with your child during the first few minutes of tilling. Even after he or she has become confident with the tiller, do not let the child use the tiller without good adult supervision. An adult should also be present during refueling and maintenance. In fact, it's up to the adult owner to make sure the tiller is properly maintained and kept in safe operating condition.

By always placing safety first, your child will acquire useful skills and a sense of accomplishment. And you'll both get the best results from your tiller.

SAFETY LABEL LOCATION

The label shown here contains important safety information. Please read it carefully. This label is considered a permanent part of your tiller. If the label comes off or becomes hard to read, contact your authorized Honda servicing dealer for a replacement.

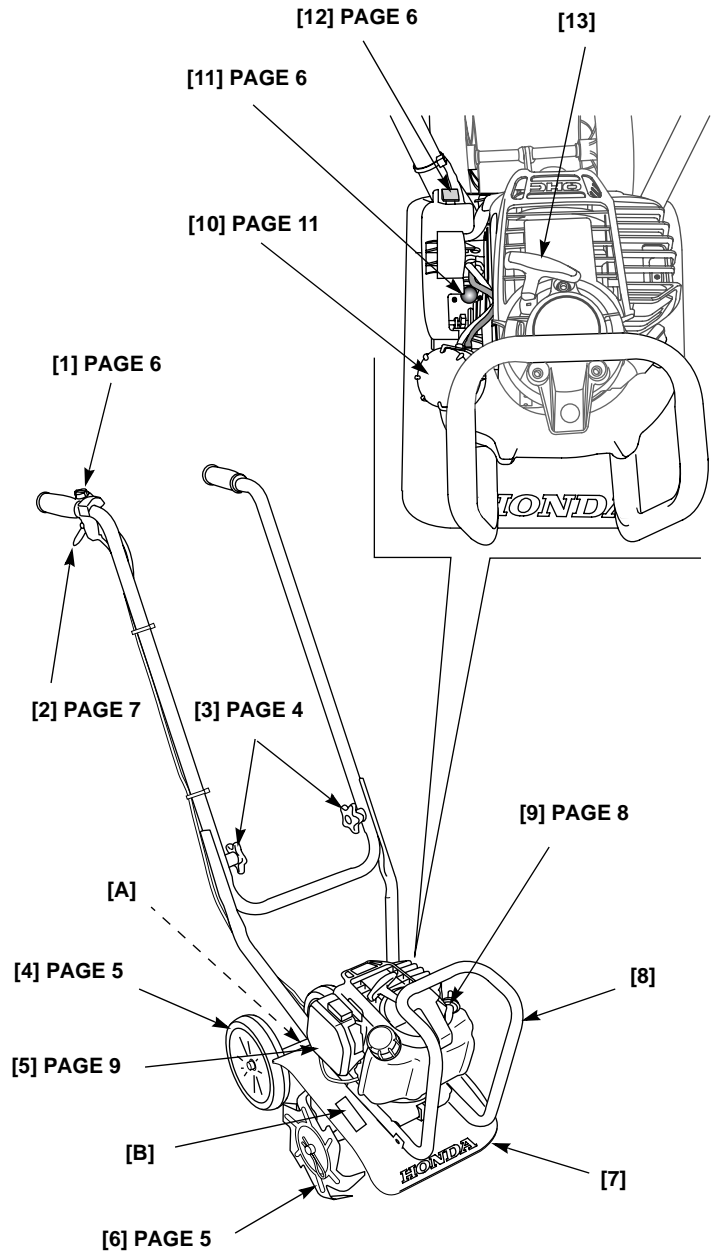
Letter	Markings	Meaning
A		
		Read and understand the owner's manual and the operation of all controls before using the machine.
		Carbon monoxide gas is toxic. Breathing it can cause unconsciousness and even kill you. Never run the engine in a closed, or even partly closed, area where people may be present.
		Contact with rotating tines will cause serious injury. Keep hands, feet, and clothing away while the engine is running.

PRODUCT IDENTIFICATION PLATE

1. Permissible sound power level according to Directive 2000/14/EC
2. Conformity mark, according to the EEC/89/392 modified Directive
3. Nominal power in kilowatts
4. Year of manufacture
5. Weight in kilograms
6. Serial number
7. Model
8. Manufacturer's name and address

B	
---	--

CONTROL LOCATIONS

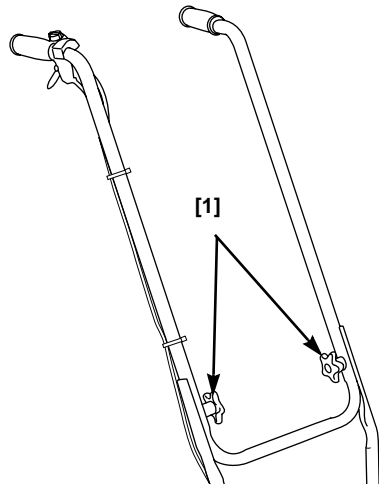


A	Safety label	B	Identification plate
1	Engine switch	7	Tine shield
2	Throttle lever	8	Carrying handle
3	Handlebar knobs	9	Engine oil filler cap/dipstick oil drain
4	Transport wheels (drag bar not shown)	10	Fuel cap
5	Air cleaner	11	Priming bulb
6	Tilling tines	12	Choke lever
		13	Recoil starter grip

SETTING UP YOUR NEW TILLER BEFORE OPERATION

UNPACKING

1. Carefully remove the tiller from the carton.
2. Unfold the tiller upper handle to the operating position as shown. Be careful not to crimp or pinch the engine switch wires and throttle cable.
3. Tighten the handle knobs [1] to secure the handle in the correct operating position.

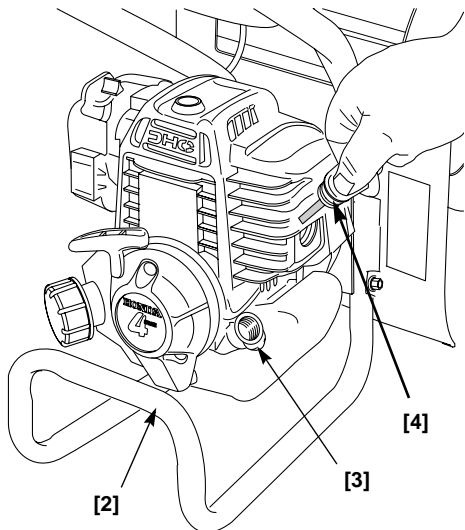


ADDING OIL

The tiller is shipped **WITHOUT OIL** in the engine.

Add oil to the tiller before attempting to start the engine. See page 9 for engine oil recommendation.

1. Working on a level surface, tip the tiller on its carrying handlebar [2] as shown.
2. Remove the oil filler cap/dipstick [4].
3. Slowly add the recommended oil (page 9) to the bottom edge of the oil fill hole [3]. Do not overfill, as the engine oil tank capacity is small.



NOTICE

Running the engine with too little or too much oil can cause engine damage. This type of damage is not covered under warranty.

4. Screw in the oil filler cap/dipstick [4] securely.

FUEL

Refer to page 11.

BEFORE USING YOUR TILLER

Before using the tiller, all tiller operators must read the following chapters and sections:

- **TILLER SAFETY** (page 2).
- **CONTROL LOCATIONS** (page 3).
- **BEFORE OPERATION** (page 4).
- **OPERATION** (page 5).
- **MAINTENANCE SCHEDULE** (page 8).

ARE YOU READY TO OPERATE THE TILLER?

Your safety is your responsibility. A little time spent in preparation will significantly reduce your risk of injury.

Read and understand this manual. Know what the controls do and how to operate them.

Familiarize yourself with the tiller and its operation before you begin using it. Know how to quickly shut off the engine in case of an emergency.

You must be alert and in good physical condition to operate the tiller. Do not operate the tiller if you are tired, ill, or under the influence of alcohol, medication, or any substance that might impair your vision, dexterity, or judgment.

If you have any physical problem that may be aggravated by strenuous work, consult your physician before operating the tiller.

Wearing protective clothing will reduce your risk of injury. Do not wear loose clothing, jewelry, short pants, sandals, or go barefoot. Secure hair so it is above shoulder level.

Wear gloves, a long-sleeved shirt, and long pants made of heavy material. Clothing should fit closely but allow freedom of movement, and should have no strings, straps, etc. that could catch on brush or the tiller. Keep clothing fastened.

Wear sturdy work boots with good toe protection and nonslip soles.

IS YOUR WORKING AREA READY?

Objects thrown by the tiller can cause serious injury. Before operating the tiller, carefully inspect the area, and remove all objects that could be thrown by, or entangled in, the tilling attachment, such as rocks, broken glass, nails, wire, or string.

Never operate the tiller without good visibility or light.

Clear the area of children, bystanders, and pets. Keep all children, bystanders, and pets at least 15 meters away from where the tiller is being operated.

If anyone approaches you while you are operating the tiller, release the throttle lever and stop the engine.

IS YOUR TILLER READY TO GO?

For your safety, and to maximize the service life of your equipment, it is very important to take a few moments before you operate the tiller to check its condition. Be sure to take care of any problem you find, or have your servicing dealer correct it, before you operate the tiller.

⚠ WARNING

Improperly maintaining this tiller, or failing to correct a problem before operation, could cause a malfunction in which you could be seriously injured.

Always perform a pre-operation inspection before each operation, and correct any problem.

Safety Inspection

- Look around the engine for signs of oil or petrol leaks. Wipe up any spills before starting the engine.
- Replace any damaged parts.
- Check that all fasteners are in place and secure. Tighten as necessary.

Tiller Tine Inspection

- Look for signs of damage to the tilling tines (or any accessory installed). Replace any tiller tines and parts that are worn out, bent, cracked, chipped, or damaged in any way.
- When using an accessory, make sure it is properly installed and securely fastened (see attachment installation instructions).
- Check that the debris shield is securely installed and in good condition.

Maintenance Inspection

- Check the oil level (page 8). Running the engine with a low oil level can cause engine damage.
- Check the air filter (page 9). A dirty air filter will restrict air flow to the carburetor, reducing engine and tiller performance.
- Check throttle operation (page 11). The throttle must operate smoothly for good throttle control.
- Check the fuel level (page 11). Starting with a full tank will help to eliminate or reduce operating interruptions for refueling.

OPERATION

SAFE OPERATING PRECAUTIONS

Before operating the tiller for the first time, please review *IMPORTANT SAFETY INFORMATION* (page 2) and *BEFORE OPERATION* (page 4).

Even if you have operated other tillers, take time to become familiar with the operation of this tiller's controls and handling.

For your safety, avoid starting or operating the engine in an enclosed area, such as a garage. Your engine's exhaust contains poisonous carbon monoxide gas which can collect rapidly in an enclosed area and cause illness or death.

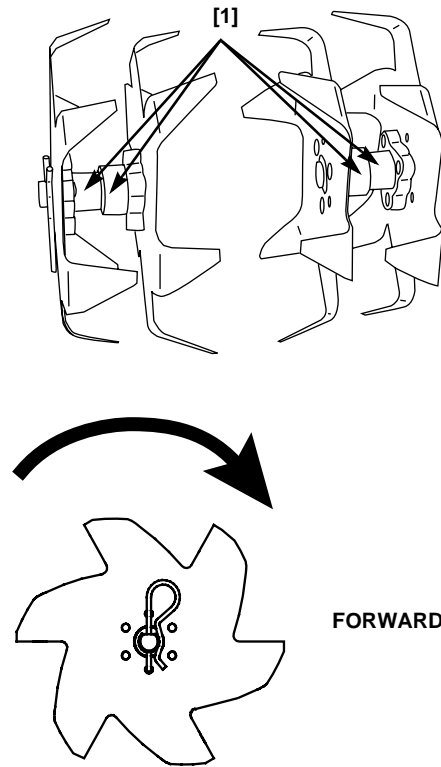
If the tiller starts to shake or vibrate, stop the engine immediately. After the tiller tines have completely stopped, inspect them to determine the cause of the vibration. Sudden vibration is a sign of a hazardous problem, such as a loose or damaged tilling tines (or tiller attachment), hidden objects in the soil, or the ground that is too hard to till. Do not operate the tiller until the problem is corrected.

Prolonged exposure to vibration may cause hand/arm vibration syndrome (HAVS). Symptoms include loss of skin color in the hands and numbness or a painful tingling sensation in the fingers, hands, and arms. Regular users of any power equipment may feel the numbness or pain spontaneously, at any time, not just after using the equipment. If any of these symptoms occur, see a physician immediately.

Tine Installation

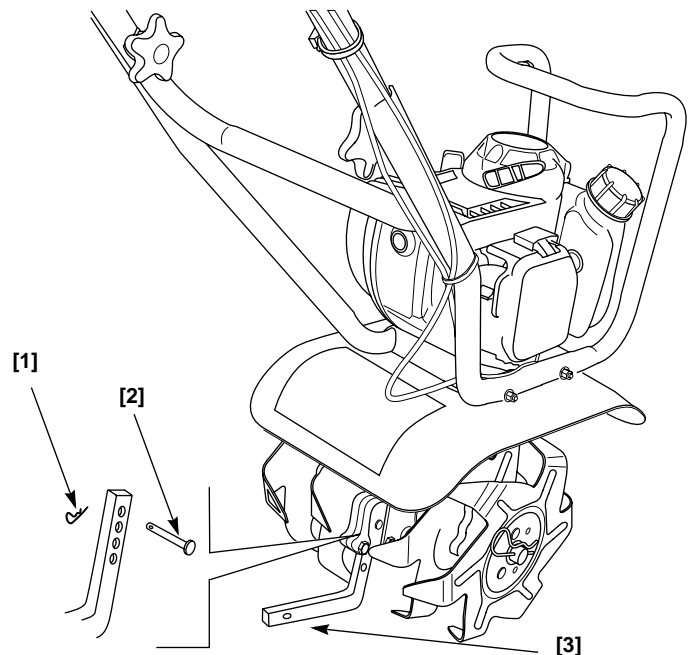
Make sure the tines are installed properly with the blades angled inward and the tine spacers [1] facing each other. The leading edge of each blade is slanted.

Viewed from the front.



Drag Bar Installation

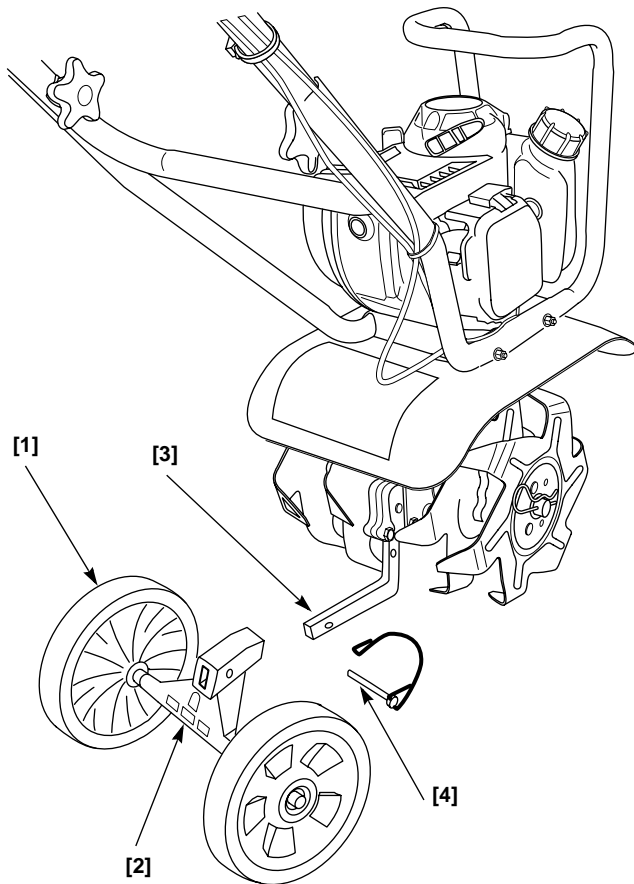
1. Make sure the engine is OFF before installing the drag bar.
2. Remove the lock pin [1] and the 6 x 25 mm clevis pin [2].
3. Install the drag bar [3] angled to the rear. Adjust the height to one of 4 height positions and insert the 6 x 25 mm clevis pin. Secure with the lock pin.



When your tilling job is completed, reinstall the transport wheels onto the drag bar.

Moving the Tiller

Do not transport the tiller with the engine running.



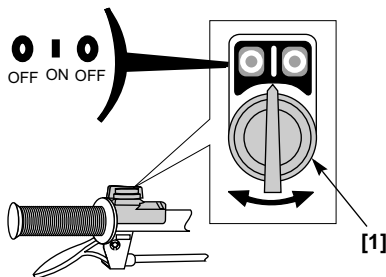
The tiller has transport wheels [1] to allow easy maneuvering to and from the work area. Install the transport wheels by inserting the wheel mount [2] onto the drag bar [3]. Secure with the locking clevis pin [4].

See *TILLER OPERATION* (page 7) for additional information.

Before tilling, remove the transport wheels from the drag bar.

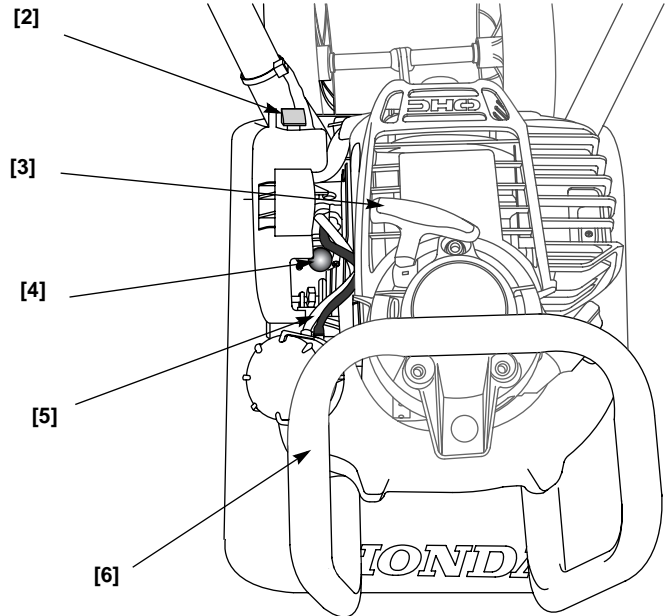
STARTING THE ENGINE

1. Move the engine switch [1] to the ON position.



2. To start a cold engine, move the choke lever [2] up to the CLOSED (🔒) position.

To restart a warm engine, leave the choke lever down in the OPEN position.



3. To start a cold engine, or after refueling an engine that has run out of fuel, press the priming bulb [4] repeatedly until fuel can be seen in the clear-plastic fuel-return tube [5].

To restart a warm engine, it is not necessary to press the priming bulb.

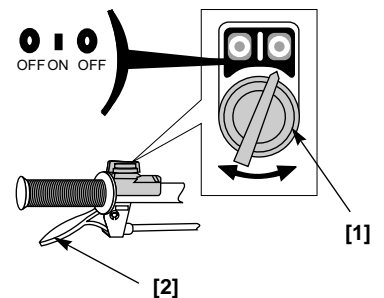
4. Place your left hand on the carrying handle [6] and hold it firmly. Make sure your feet are away from the tiller tines. With your right hand, pull the starter grip [3] lightly until you feel resistance, then pull briskly. Return the starter grip gently.
5. If the choke lever was moved to the CLOSED (🔒) position, gradually move it to the OPEN position as the engine warms up.

Allow the engine to warm up for a few moments after starting a cold engine.

The tiller tines should not rotate with the engine idling. If there is rotation at idle, adjust the idle speed (page 11) before using the tiller.

STOPPING THE ENGINE

1. Release the throttle lever [2].
2. Move the engine switch [1] to the OFF position.



TILLER OPERATION

The tiller is designed to operate either with the drag bar installed for depth control in the forward direction or with the drag bar removed for cultivating.

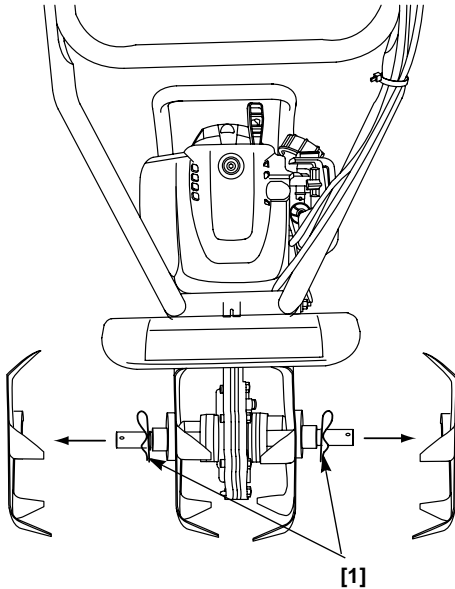
Cultivating Without the Drag Bar

Cultivating can be accomplished by removing the drag bar and repeatedly moving the tiller in a forward/reverse direction. This allows the tines to dig in both directions.

Be aware that the tiller can be difficult to control without the drag bar installed.

Narrow Cultivating

The two outer tines can be removed to give you a narrower cultivating width. This width is approximately 127 mm. This gives you the ability to get between very closely spaced plants.



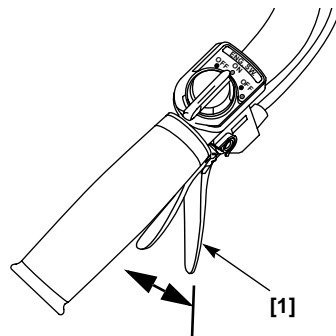
To remove the two outer tines, pull the lock pin [1] out of the hole in each end of the tine shaft. Slide the outside tine set off the tine shaft. Secure the inner set of tines onto the tine shaft by placing the lock pins in the inside set of lock pin holes.

Tilling With the Drag Bar Installed

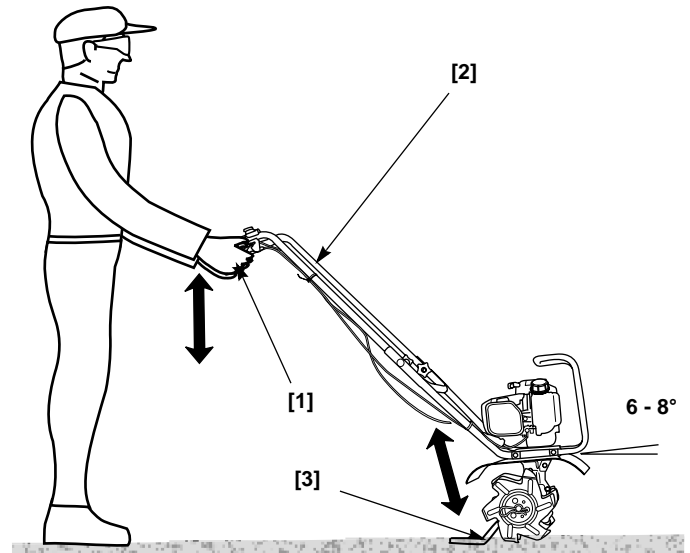
1. Install the drag bar and set the tilling depth by moving the drag bar up or down into one of 4 height positions (page 5).

The ideal height of the drag bar will depend on the type of soil being tilled and soil conditions at the time of tilling. In general, however, the drag bar should be adjusted so that the tiller is tilted slightly backward.

2. Start the engine (page 6).
3. Tilt the tiller back until the tines are off the ground. Squeeze the throttle lever [1] to full speed position (lever tight against the grip).
4. Lower the front of the tiller until the tines begin to dig into the ground.



5. Lower the handlebar [2] slightly so the front of the tiller is raised about 6 - 8°. To get the maximum advantage from the tiller, hold the tiller at this angle while you are tilling the ground.



Operating Tips

- If the tiller tends to move forward rapidly, push down on the handlebars [2] to allow the drag bar [3] to penetrate the soil and slow the forward motion of the tiller. Continue to press down until the tiller tines have dug to a desired depth that allows easy tiller handling.
- If the tines dig in but the tiller will not move forward, ease up on the handlebars and move the handlebars from side-to-side. If the tiller still digs in, but will not move forward, raise the drag bar up one hole.
- When turning, push down on [1] the handlebars to bring the tiller's weight to the rear; this will make turning easier.

SERVICING YOUR TILLER

Proper maintenance is essential for safe, economical, and trouble-free operation. It will also help reduce air pollution.

⚠ WARNING

Improper maintenance, or failure to correct a problem before operation, can cause a malfunction in which you can be seriously hurt or killed.

Always follow the inspection and maintenance recommendations and schedules in this owner's manual.

To help you properly care for your tiller, the following pages include a maintenance schedule, routine inspection procedures, and simple maintenance procedures using basic hand tools. Other service tasks that are more difficult, or require special tools, are best handled by professionals and are normally performed by a Honda technician or other qualified mechanic.

The maintenance schedule applies to normal operating conditions. If you operate your tiller under severe conditions, such as sustained high-load or high-temperature operation, or use in unusually wet or dusty conditions, consult your servicing dealer for recommendations applicable to your individual needs and use.

Remember that an authorized Honda servicing dealer knows your tiller best and is fully equipped to maintain and repair it.

To ensure the best quality and reliability, use only new, Honda Genuine parts or their equivalents for repair and replacement.

MAINTENANCE SAFETY

Some of the most important safety precautions follow. However, we cannot warn you of every conceivable hazard that can arise in performing maintenance. Only you can decide whether or not you should perform a given task.

⚠ WARNING

Failure to properly follow maintenance instructions and precautions can cause you to be seriously hurt or killed.

Always follow the procedures and precautions in this owner's manual.

Safety Precautions

- Make sure the engine is off before you begin any maintenance or repairs. This will eliminate several potential hazards:
 - ❑ **Carbon monoxide poisoning from engine exhaust.**
Operate outdoors away from open windows or doors.
 - ❑ **Burns from hot parts.**
Let the engine and exhaust system cool before touching.
 - ❑ **Injury from moving parts.**
Do not run the engine unless instructed to do so.
- Read the instructions before you begin, and make sure you have the tools and skills required.
- To reduce the possibility of fire or explosion, be careful when working around petrol. Use only a nonflammable solvent, not petrol, to clean parts. Keep cigarettes, sparks, and flames away from all fuel-related parts.

MAINTENANCE SCHEDULE

Interval ¹	Item
Before each use	Check the engine oil level (page 8) Check the air filter (page 9) Check throttle cable (page 11) Check the nuts and bolts for tightness
First month or 10 hours	Change the engine oil (page 9)
Every month or 10 hours	Clean the air filter ² (page 10)
Every 3 months or 25 hours	Check the transmission grease (page 12)
Every 6 months or 50 hours	Change the engine oil ² (page 9) Check the cooling fins (page 10) Check the clutch shoes ³
Every year or 100 hours	Change the engine oil ² (page 9) Check the spark plug (page 10) Clean the fuel tank and filter (page 11)
Every 2 years or after each 300 hours	Replace the spark plug (page 10) Adjust the valve clearance ³ Adjust the idle speed (page 11) ³ Clean the combustion chamber ³ Check the fuel tubes (page 11)

1. For professional commercial use, log hours of operation to determine proper maintenance intervals.
2. Service more frequently when used in dusty areas.
3. These items should be serviced by an authorized Honda servicing dealer, unless you have the proper tools and are mechanically proficient.

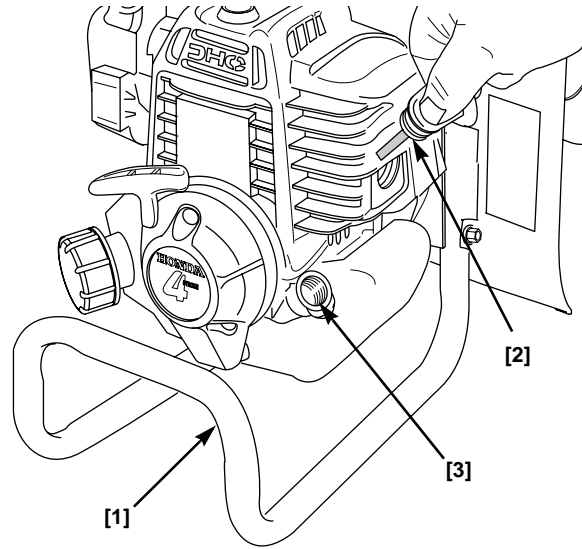
Failure to follow this maintenance schedule could result in non-warrantable failures.

ENGINE MAINTENANCE

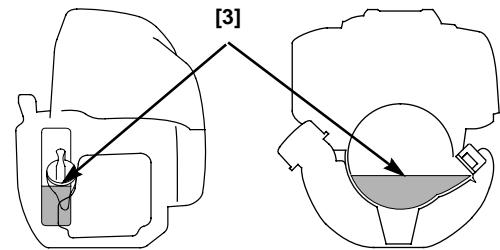
Engine Oil Level Check

Check the engine oil level before each use, or every 10 hours if operated continuously, with the engine stopped.

1. Tip the tiller on its carry handlebar [1] as shown.
2. Remove the oil filler cap/dipstick [2] and wipe it clean.



3. Insert and remove the dipstick **without screwing it into the filler opening**. Check the oil level shown on the dipstick.
4. If the oil level is low, fill to the edge of the oil filler hole [3] with the recommended oil. Avoid overfilling or underfilling, as the oil capacity is small. Be sure the engine is in a level position, as shown.



NOTICE

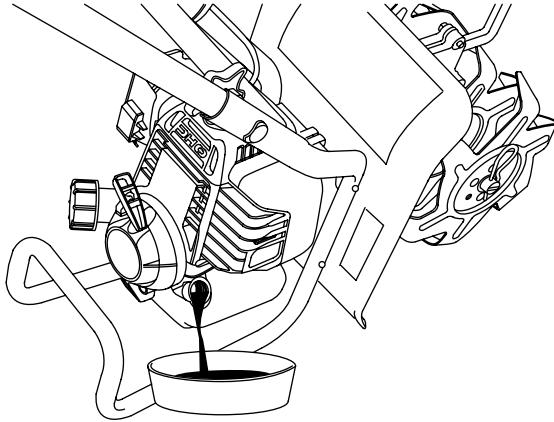
Running the engine with a low oil level can cause engine damage.

5. Screw in the oil filler cap/dipstick securely

Engine Oil Change

Drain the used oil while the engine is warm. Warm oil drains quickly and completely.

1. Place a suitable container below the engine to catch the used oil.
2. Remove the oil filler cap/dipstick.
3. Tip the tiller to drain the used oil through the oil filler opening. Allow the used oil to drain completely.



Please dispose of used motor oil in a manner that is compatible with the environment. We suggest you take used oil in a sealed container to your local recycling center or service station for reclamation. Do not throw it in the trash, pour it on the ground, or pour it down a drain.

4. With the engine resting on the carrying handlebar on a level surface, fill with the recommended oil to the edge of the oil filler hole. Do not overfill.
5. Screw in the filler cap/dipstick securely.

Engine Oil Recommendations

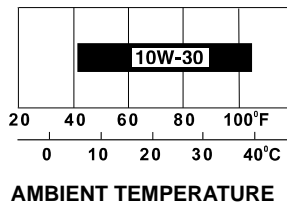
Check the engine oil level with the engine stopped and the tiller on a level surface.

Use 4-stroke motor oil that meets or exceeds the requirements for API service category SJ or later. Always check the API SERVICE label on the oil container to be sure it includes the letters SJ or later.

SAE 10W-30 is recommended for general use (see table).

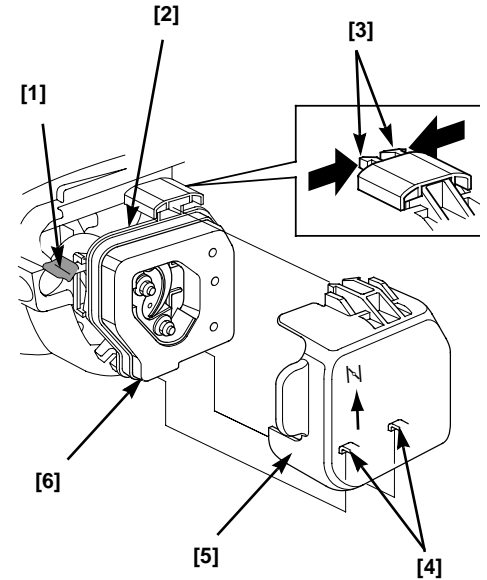
NOTICE

- Running the engine with a low oil level can cause engine damage.
- Using nondetergent oil can shorten the engine's service life, and using 2-stroke oil can damage the engine.



Air Filter Check

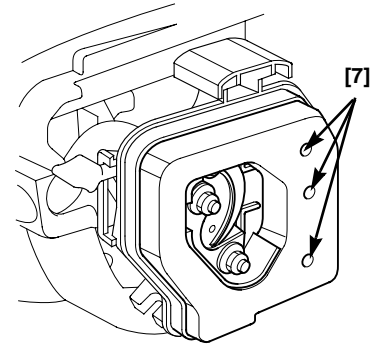
1. Move the choke lever [1] to the CLOSED (N) position to prevent dirt from entering the engine.
2. Squeeze together the air cleaner upper tab [3] at the top of the air cleaner cover [5] to release it from its catch, and then flip the cover down to remove it.
3. Check the air filter [6] to be sure it is clean, properly oiled, and in good condition.
4. If the air filter is dirty, clean it as described under *Air Filter Cleaning*. Replace the air filter if it is damaged.



NOTICE

Operating the engine without an air filter, or with a damaged air filter, will allow dirt to enter the engine, causing rapid engine wear. This type of damage is not covered under warranty.

5. Align the air filter [6] with the air cleaner base [2] as shown. Reinstall the air filter by locating the three air cleaner base pegs into the three air filter holes [7]. Slide the air filter over the pegs until it is flush with the air cleaner base.



NOTICE

An improperly installed air filter will allow dirt to enter the engine, causing rapid engine wear. Make sure the air filter is properly installed and flush with the air cleaner base before installing the air cleaner cover.

6. Reinstall the air cleaner cover [5] by hooking the two lower tabs [4] on the bottom of the cover and snapping the upper tab [3] into place.

Air Filter Cleaning

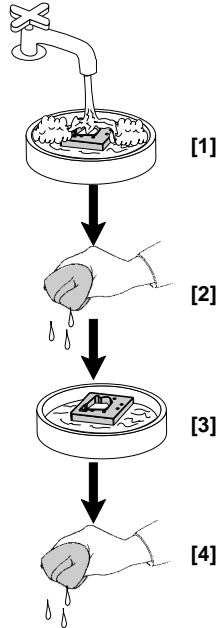
A dirty air filter will restrict air flow to the carburetor, reducing engine performance. If you operate the tiller in very dusty areas, clean the air filter more often than specified in the *MAINTENANCE SCHEDULE* (page 8).

1. Remove the air filter.
2. Clean the air filter in warm soapy water [1], rinse, and allow it to dry thoroughly [2]. Or, clean in nonflammable solvent and allow it to dry.
3. Dip the air filter in clean engine oil [3], and then squeeze out all excess oil [4]. The engine will be hard to start or will smoke when started if too much oil is left in the air filter.

NOTICE

Operating the engine with a dry air filter will allow dust to enter, causing engine damage. The air filter must be oiled after cleaning.

4. Wipe dirt from the air cleaner base and cover using a moist rag. Be careful to prevent dirt from entering the carburetor.
5. Reinstall the air filter and air filter cover.



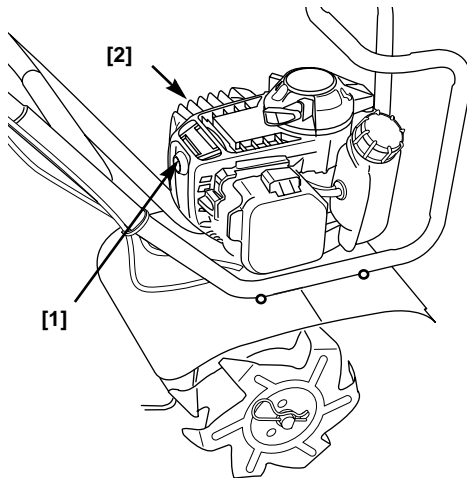
Spark Plug Service

Recommended Spark Plug: NGK - CMR5H

NOTICE

An incorrect spark plug can cause engine damage.

1. Use a 4 mm Allen wrench to loosen the 5 mm hex bolt [1], and remove the fan cover [2].
2. Disconnect the spark plug cap [3], and remove any dirt from around the spark plug area.
3. Remove the spark plug [4] with a 5/8-inch spark plug wrench.



4. Inspect the spark plug. Replace it if the electrodes are worn, or if the insulator is cracked or chipped.
5. Measure the spark plug electrode gap with a suitable gauge.

GAP: 0.60 ~ 0.70 mm

Correct the gap, if necessary, by carefully bending the side electrode.

6. Install the spark plug carefully, by hand, to avoid cross-threading.
7. After the spark plug seats, tighten with a 5/8-inch spark plug wrench to compress the washer [5].

If reinstalling the used spark plug, tighten 1/8 ~ 1/4 turn after the spark plug seats.

If installing a new spark plug, tighten 1/2 turn after the spark plug seats.

NOTICE

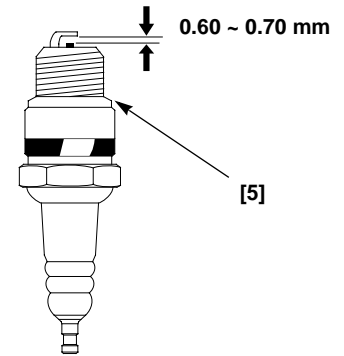
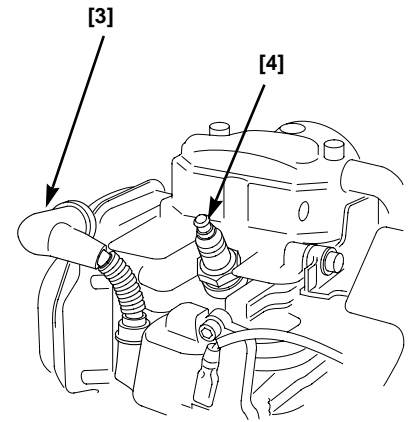
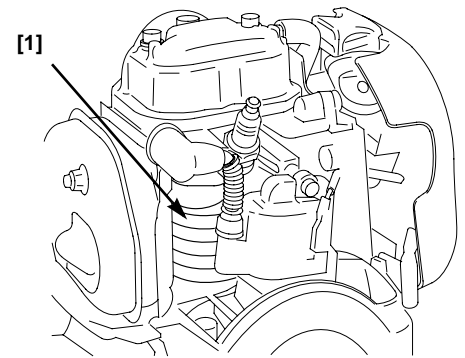
A loose spark plug can overheat and damage the engine. Overtightening the spark plug can damage the threads in the cylinder head.

8. Attach the spark plug cap [3].
9. Install the fan cover [2] and 5 mm hex bolt [1] and tighten securely.

Cooling Fin Inspection

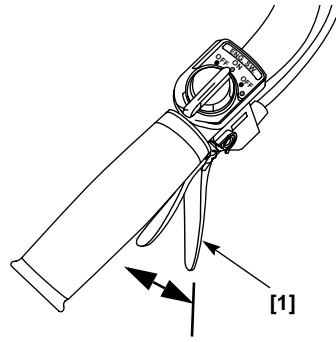
Inspect the engine cooling fins [1]. You should clean out any dirt and debris if air is obstructed from flowing across the cooling fins.

1. Loosen the 5 mm hex bolt, and then remove the fan cover.
2. Remove all dirt and debris from the cooling fins.
3. Install the fan cover, and tighten the 5 mm hex bolt securely.



Throttle Cable Inspection

Verify the throttle lever [1] operates smoothly, releases properly, and the throttle cable is undamaged. If there is visible damage, or if the throttle lever does not operate smoothly or release properly, take your tiller to your authorized Honda servicing dealer.

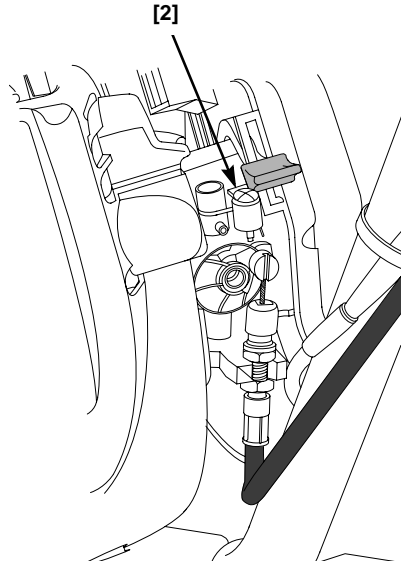


Carburetor Adjustment

A tachometer is required to adjust the idle speed. If you do not have one, take your tiller to an authorized Honda servicing dealer to perform idle speed adjustment.

1. Start the engine outdoors, and allow it to warm up to normal operating temperature.
2. Turn the throttle stop screw [2] to obtain a stable idle, below the speed at which the tiller tines begin to turn.

Standard Idle Speed:
3,100 ± 200 rpm



REFUELING

This engine is certified to operate on unleaded petrol with a research octane rating of 91 or higher.

Refuel in a well-ventilated area with the engine stopped. If the engine has been running, allow it to cool first. Never refuel the engine inside a building where petrol fumes may reach flames or sparks.

You may use regular unleaded petrol containing no more than 10% ethanol (E10) or 5% methanol by volume. In addition, methanol must contain cosolvents and corrosion inhibitors. Use of fuels with content of ethanol or methanol greater than shown above may cause starting and/or performance problems. It may also damage metal, rubber, and plastic parts of the fuel system. Engine damage or performance problems that result from using a fuel with percentages of ethanol or methanol greater than shown above are not covered by warranty.

If your equipment will be used on an infrequent or intermittent basis, please refer to the fuel section of the *STORAGE* chapter (page 13) for additional information regarding fuel deterioration.

⚠ WARNING

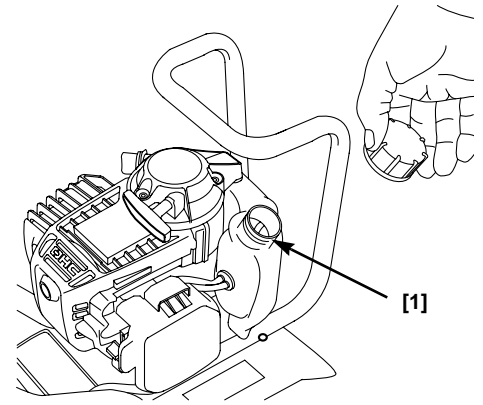
Petrol is highly flammable and explosive.

You can be burned or seriously injured when handling fuel.

- Stop the engine and keep heat, sparks, and flame away.
- Handle fuel only outdoors.
- Wipe up spills immediately.

Never use stale or contaminated petrol or an oil/petrol mixture. Avoid getting dirt or water in the fuel tank.

1. To refuel, set the tiller on level ground and remove the fuel tank cap.
2. Fill the tank with petrol to the shoulder of the filler neck [1].
Refuel carefully to avoid spilling fuel. Do not overfill.
3. After refueling, tighten the fuel tank cap securely.



Move the tiller at least 3 meters away from the fueling source and site before starting the engine.

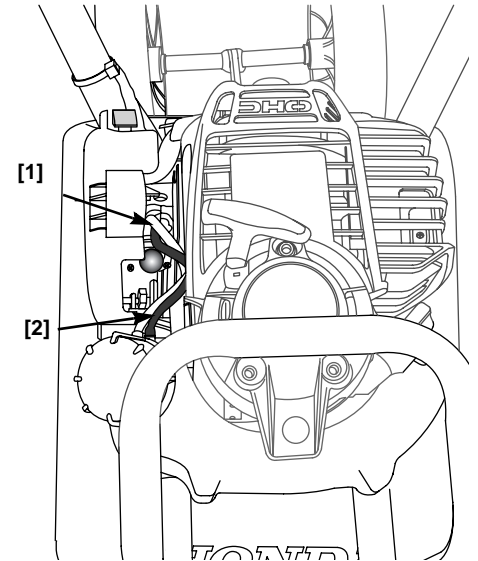
NOTICE

Fuel can damage paint and plastic. Be careful not to spill fuel when filling your fuel tank. Damage caused by spilled fuel is not covered by under warranty.

Fuel Tube Inspection

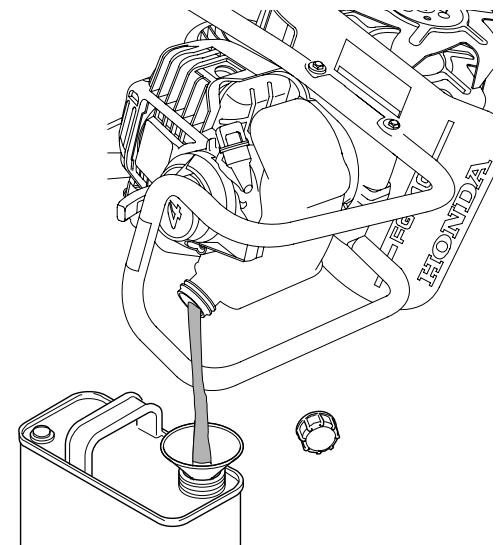
Check the clear fuel return [1] and black fuel supply [2] tubes, and replace any tube that is damaged, cracked, or leaking.

Refer to the Honda shop manual for tube replacement instructions, or take the tiller to an authorized Honda servicing dealer.

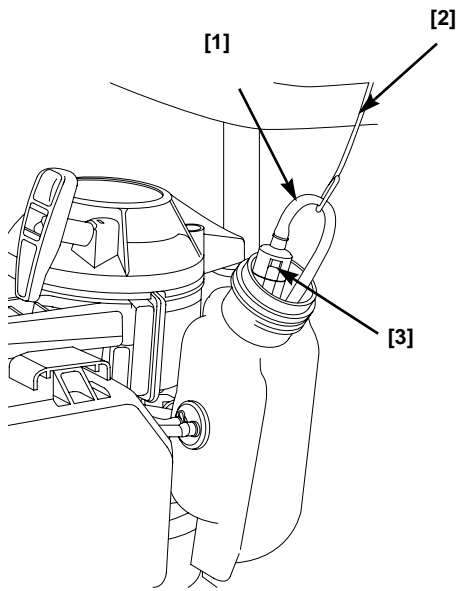


Fuel Filter and Fuel Tank Cleaning

1. Remove the fuel tank cap.
2. Tip the tiller as shown and empty the fuel tank into an approved petrol container. Use a funnel to avoid spilling petrol.



3. Pull the fuel filter [3] out through the fuel filler neck by hooking the black fuel supply tube [1] with a piece of wire [2], such as a partly straightened paper clip.



4. Inspect the fuel filter. If the fuel filter is dirty, wash it with nonflammable solvent. Be careful to avoid damaging the filter.

5. Replace the filter if it is damaged or excessively dirty.

6. Rinse sediment from the fuel tank with nonflammable solvent.

7. Insert the fuel filter [3] in the fuel tank, and install the fuel tank cap.

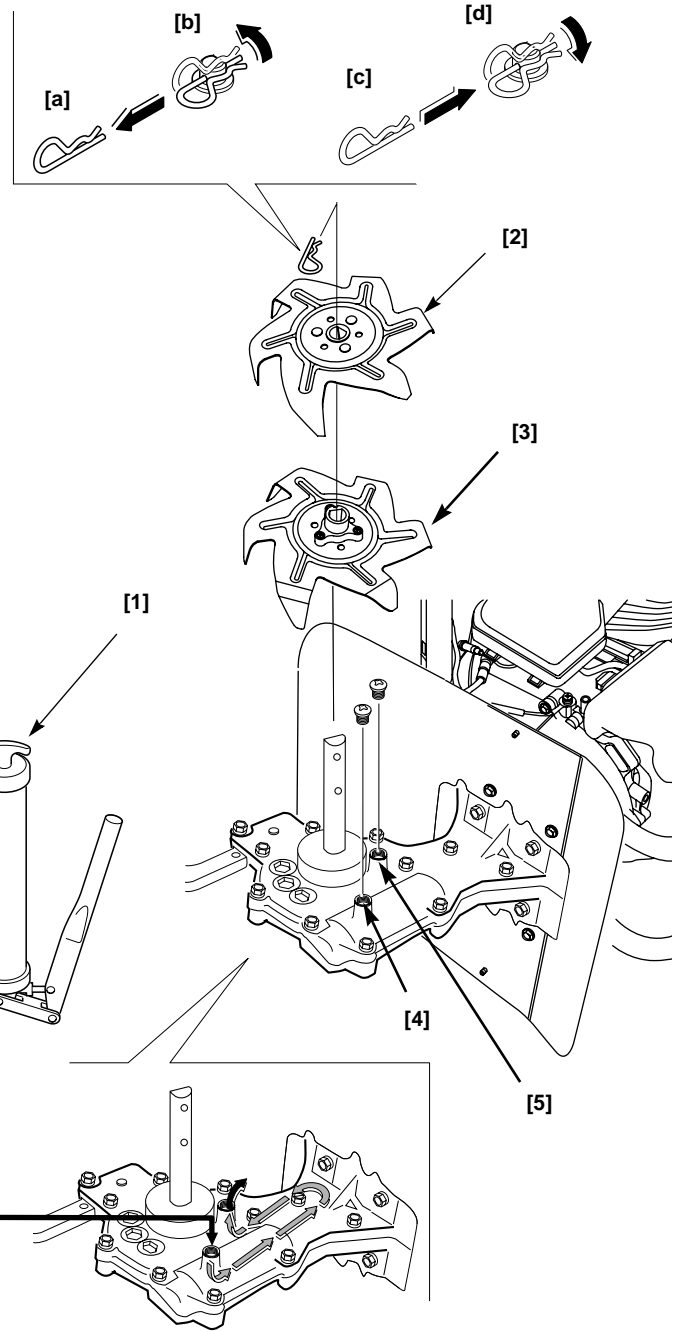
TRANSMISSION LUBRICATION

The transmission is pre-lubricated at the factory.

At the beginning of each tilling season, or after every 25 hours of use during the season, the transmission should be filled with grease.

Replacement grease should be a high quality petroleum based NLGI #2 general purpose grease usually available in disposable tubes at most hardware or automotive parts stores.

1. Place the tiller on the left side as shown.
2. Remove the lock pin from the right side tine shaft by turning it UP [a] and pulling it out [b] as shown. Wearing heavy gloves, remove both right side tines.
3. Remove the air vent screw [5] and fill hole screw [4] from the transmission.
4. Fill the transmission by using a grease gun [1] or grease applicator at the fill hole screw opening. Push the gun or applicator against the opening so as to seal the nozzle of the gun or applicator against the casting embossment. Apply grease until grease begins to come out of the top air vent hole [5].
5. Reinstall the air vent screw and fill hole screw.
6. Clean the tine shaft and place a few drops of oil on the tine shaft before installing the tines.
7. Wear heavy gloves and reinstall the tines in the reverse order of removal.
8. Install the lock pin [c] through the round side of the tine shaft hole then turn it over [d] to lock it in place.

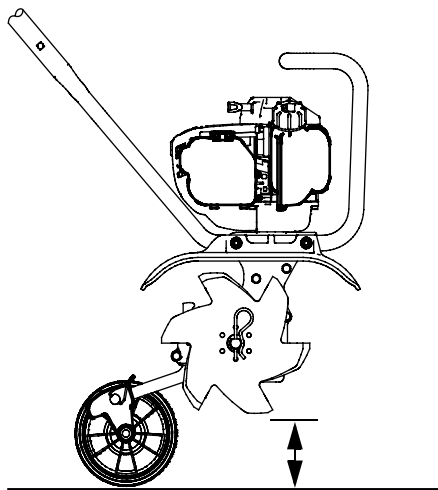


TRANSPORTING

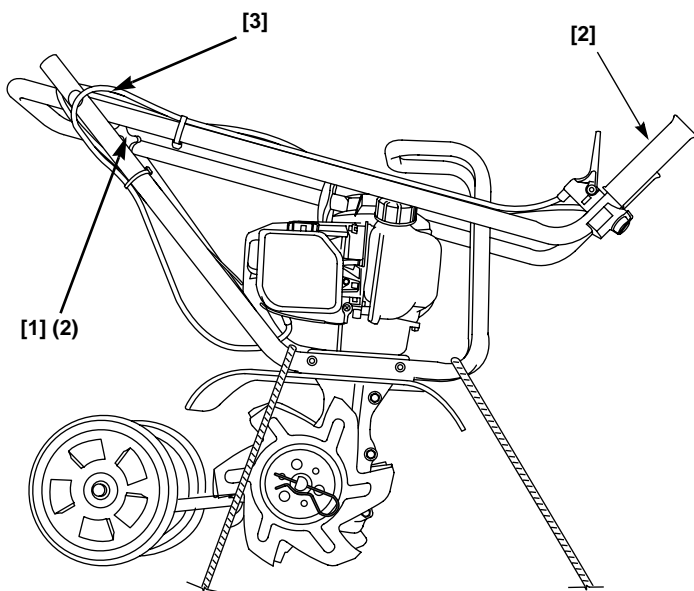
BEFORE LOADING

If the engine has been running, allow it to cool for at least 15 minutes before loading the tiller on the transport vehicle. A hot engine and exhaust system can burn you and can ignite some materials.

1. Turn the engine switch to the OFF position.
2. Make sure the fuel cap is securely tightened.
3. Install the wheels in the transport position for greater ground clearance and ease of movement.



LOADING



If necessary, loosen the handlebar knobs [1] so that the tiller upper handlebar [2] can be collapsed. Be careful that the throttle cable and engine switch wire [3] are not pinched or bent when collapsing the upper handlebar.

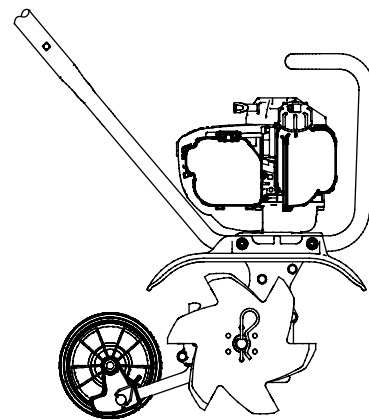
Secure the tiller by tying around the lower handlebars just in front and back of the engine as shown.

STORAGE

STORAGE PREPARATION

Proper storage preparation is essential for keeping your tiller trouble free and looking good. The following steps will help to keep rust and corrosion from impairing your tiller's function and appearance, and will make the engine easier to start when you use the tiller again.

Install the wheels in the storage position to allow the tiller to be stored in an upright position.



Cleaning

1. Wash the tiller, including the area around the tiller tines.
2. Wash the engine by hand, and be careful to prevent water from entering the air cleaner.

NOTICE

Using a garden hose or pressure washing equipment can force water into the air cleaner. Water in the air cleaner will soak the filter and can enter the carburetor or engine, causing damage.

3. Water on a hot engine can cause damage. If the engine has been running, allow it to cool for at least 1/2 hour before washing.
4. If using a garden hose or pressure washing equipment to clean the tiller, be careful to avoid getting water into controls and cables, or anywhere near the engine air cleaner or muffler opening.
5. After washing the tiller, wipe dry all accessible surfaces.
6. Start the engine outdoors, and let it run until it reaches normal operating temperature to evaporate any water remaining on the engine.
7. Stop the engine and allow it to cool.
8. After the tiller is clean and dry, touch up any damaged paint, and coat other areas that may rust with a light film of oil.

FUEL

NOTICE

Depending on the region where you operate your equipment, fuel formulations may deteriorate and oxidize rapidly. Fuel deterioration and oxidation can occur in as little as 30 days and may cause damage to the carburetor and/or fuel system. Please check with your servicing dealer for local storage recommendations.

Petrol will oxidize and deteriorate in storage. Old petrol will cause hard starting, and it leaves gum deposits that restrict the fuel system. If the petrol in your tiller deteriorates during storage, you may need to have the carburetor and other fuel system components, serviced or replaced.

The length of time that petrol can be left in your fuel tank and carburetor without causing functional problems will vary with such factors as petrol blend, storage temperatures, and whether the fuel tank is partially or completely filled. The air in a partially filled fuel tank promotes fuel deterioration. Very warm storage temperatures accelerate fuel deterioration. Fuel deterioration problems may occur within a few months, or even less if the petrol was not fresh when you filled the fuel tank.

The *DISTRIBUTOR'S LIMITED WARRANTY* does not cover fuel system damage or engine performance problems resulting from neglected storage preparation.

You can extend fuel storage life by adding a petrol stabilizer that is formulated for that purpose, or you can avoid fuel deterioration problems by draining the fuel tank and carburetor.

Adding Fuel Stabilizer To Extend Fuel Storage Life

When adding a fuel stabilizer, fill the fuel tank with fresh petrol. If only partially filled, air in the tank will promote fuel deterioration during storage. If you keep a container of petrol for refueling, be sure that it contains only fresh petrol.

Add fuel stabilizer, following the manufacturer's instructions.

After adding a fuel stabilizer, run the engine outdoors for 10 minutes to be sure that treated petrol has replaced the untreated petrol in the carburetor.

Draining the Fuel Tank and Carburetor

1. Drain the fuel from the fuel tank into a suitable container (page 11).
2. Start the engine and allow it to run until the engine stops.

⚠ WARNING

Petrol is highly flammable and explosive.

You can be burned or seriously injured when handling fuel.

- Stop the engine and keep heat, sparks, and flames away.
- Handle fuel only outdoors.
- Wipe up spills immediately.

Engine Oil

Change the engine oil (page 9).

Carburetor & Air Cleaner

Clean the air filter (page 10), and move the choke lever to the CLOSED (N) position.

Engine Cylinder

Remove the spark plug (page 10). Pour 1/4 tablespoon (1 ~ 3 cc) of clean engine oil into the cylinder. Pull the starter rope several times to distribute the oil in the cylinder. Reinstall the spark plug. Pull the starter rope slowly until resistance is felt; then return the starter grip gently. This closes the valves so that moisture cannot enter.

STORAGE PRECAUTIONS

If your tiller will be stored with petrol in the fuel tank and carburetor, it is important to reduce the hazard of petrol vapor ignition. Select a well-ventilated storage area away from any appliance that operates with a flame, such as a furnace, water heater, or clothes dryer. Also avoid any area with a spark-producing electric motor or where power tools are operated.

If possible, avoid storage areas with high humidity because that promotes rust and corrosion.

With the engine and exhaust system cool, cover the tiller to keep out dust. A hot engine and exhaust system can ignite or melt some materials. Do not use sheet plastic as a dust cover. A nonporous cover will trap moisture, promoting rust and corrosion.

REMOVAL FROM STORAGE

Check your tiller as described in the *BEFORE OPERATION* chapter of this manual (page 4). If the fuel was drained during storage preparation, fill the tank with fresh petrol. If you keep a container of petrol for refueling, be sure that it contains only fresh petrol. Petrol oxidizes and deteriorates over time, causing hard starting.

If the cylinder was coated with oil during storage preparation, the engine will smoke briefly at startup. This is normal.

TAKING CARE OF UNEXPECTED PROBLEMS

Engine Will Not Start

Possible Cause	Correction
Ignition switch OFF.	Turn the engine switch ON (page 6).
Choke lever not in CLOSED (N) position (cold engine).	Move the lever to the CLOSED (N) position (page 6).
Out of fuel.	Add fuel and press the priming bulb to fill the carburetor (page 6).
Bad fuel, tiller stored without treating or draining petrol, refueled with bad petrol.	Drain the fuel tank. Refuel with fresh petrol (page 14).
Spark plug faulty, fouled, or has incorrect gap.	Gap or replace the spark plug (page 10).
Fuel filter restricted, carburetor malfunction, ignition malfunction, valves stuck, etc.	Have an authorized Honda servicing dealer replace or repair faulty components as needed.

Loss of Power or Engine Speed Won't Increase

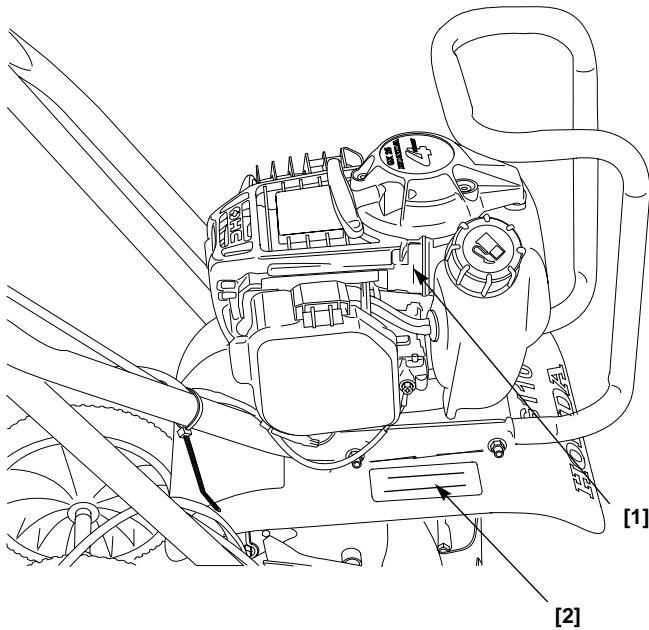
Possible Cause	Correction
Air filter dirty or restricted.	Clean or replace the air filter (page 10).
Fuel filter dirty or restricted.	Clean or replace the fuel filter (page 11).
Throttle cable out of adjustment, broken, or bent.	Adjust or replace the cable if necessary (page 11).

Tiller Tines (or attachment) Won't Stop Turning When the Throttle is at SLOW Position

Possible Cause	Correction
Faulty throttle control or cable; throttle cable out of adjustment or bent.	Check the throttle control parts, adjust or replace the cable if necessary (page 11).
Idle speed is too high.	Adjust the idle speed (page 11), or have an authorized Honda servicing dealer adjust the idle speed.
Clutch springs worn or clutch system faulty.	Have an authorized Honda servicing dealer replace clutch springs or replace or repair other clutch system parts.

TECHNICAL INFORMATION

SERIAL NUMBER LOCATIONS



There are two serial numbers, one for the engine [1] and one for the frame [2]. Record the engine and frame serial numbers and date of purchase in the space below. You will need this information when ordering parts and when making technical or warranty inquiries.

Engine serial number: _____

Frame serial number: _____

Date of purchase: _____

CARBURETOR MODIFICATION FOR HIGH ALTITUDE OPERATION

At high altitude, the standard carburetor air-fuel mixture will be too rich. Performance will decrease, and fuel consumption will increase. A very rich mixture will also foul the spark plug and cause hard starting. Operation at an altitude that differs from that at which this engine was certified, for extended periods of time, may increase emissions.

High altitude performance can be improved by specific modifications to the carburetor. If you always operate your tiller at altitudes above 1,500 meters, have your servicing dealer perform this carburetor modification. This engine, when operated at high altitude with the carburetor modifications for high altitude use, will meet each emission standard throughout its useful life.

Even with carburetor modification, engine horsepower will decrease about 3.5% for each 300-meter increase in altitude. The effect of altitude on horsepower will be greater than this if no carburetor modification is made.

NOTICE

When the carburetor has been modified for high altitude operation, the air-fuel mixture will be too lean for low altitude use. Operation at altitudes below 1,500 meters with a modified carburetor may cause the engine to overheat and result in serious engine damage. For use at low altitudes, have your servicing dealer return the carburetor to original factory specifications.

EMISSION CONTROL SYSTEM

Source of Emissions

The combustion process produces carbon monoxide, oxides of nitrogen, and hydrocarbons. Control of hydrocarbons and oxides of nitrogen is very important because, under certain conditions, they react to form photochemical smog when subjected to sunlight. Carbon monoxide does not react in the same way, but it is toxic.

Honda utilizes appropriate air/fuel ratios and other emissions control systems to reduce the emissions of carbon monoxide, oxides of nitrogen, and hydrocarbons. Additionally, Honda fuel systems utilize components and control technologies to reduce evaporative emissions.

Replacement Parts

We recommend the use of Honda Genuine parts whenever you have maintenance done. These original-design replacement parts are manufactured to the same standards as the original parts, so you can be confident of their performance. The use of replacement parts that are not of the original design and quality may impair the effectiveness of your emissions control system.

A manufacturer of an aftermarket part assumes the responsibility that the part will not adversely affect emissions performance. The manufacturer or rebuilder of the part must certify that use of the part will not result in a failure of the engine to comply with emissions regulations.

Maintenance

Follow the *MAINTENANCE SCHEDULE* on page 8. Remember this schedule is based on the assumption that your machine will be used for its designed purpose. Sustained high-load or high-temperature operation, or use in unusually wet or dusty conditions, will require more frequent service.

SPECIFICATIONS

ENGINE	
Model	GX25T
Type	4-stroke, overhead cam, single cylinder
Description code	GCAPT
Displacement	25 cm ³
Bore & stroke	35 x 26 mm
Compression ratio	8.0:1
Cooling system	Forced-air
Ignition system	Capacitive discharge ignition
Spark plug	CMR5H (NGK)
Carburetor	Diaphragm type
Air cleaner	Semi-dry type
Lubrication system	Oil mist
Oil capacity	80 cm ³
Recommended operating ambient temperature	5°C ~ 40°C
Starting system	Recoil starter
Stopping system	Ignition primary circuit ground
Fuel used	Unleaded petrol with a research octane rating of 91 or higher
Fuel tank capacity	0.57 ℓ
PTO shaft rotation	Counterclockwise (from PTO shaft side)

TILLER			
Model		FG110K1DET	
Description code		FAAA	
Length x width x height		1175 x 365 x 958 mm	
Weight	Dry	w/drag bar	12.9 kg
		w/wheels	13.6 kg
	Wet	w/drag bar	13.4 kg
		w/wheels	14.1 kg
Drive clutch		Centrifugal mechanical	
Drive clutch engagement speed		4,200 ± 200 rpm	
Tilling width		230 mm	
Tilling depth		203 mm	
Transmission drive		Worm gear	
Tine number		4 (6 teeth per tine)	
Sound pressure level at operator's ears (LPA) at 6,550 rpm (In accordance with EN709)		70.5 dB (A)	
Sound power level guaranteed (LWA) at 6,550 rpm (In accordance with Directive 2000/14/EC)		93.0 dB (A)	
Vibration test (In accordance with EN709)		9.2 m/s ²	

Maintenance

Fuel	Unleaded petrol with research octane rating of 91 or higher	See page 11
Engine oil	SAE 10W-30 API SJ or later	See page 9
Spark plug type	NGK- CMR5H	See page 10
Standard idle speed	2,900 ~ 3,300 rpm	Shop manual

Tune-up

Spark plug gap	0.6 ~ 0.7 mm	See page 10
Valve clearance (cold)	Intake: 0.08 ± 0.02 mm Exhaust: 0.11 ± 0.02 mm	See your authorized Honda servicing dealer
Other specifications	No other adjustments needed	

CONSUMER INFORMATION

CUSTOMER SERVICE INFORMATION

Honda Power Equipment dealership personnel are trained professionals. They should be able to answer any question you may have. If you encounter a problem that your dealer does not solve to your satisfaction, please discuss it with the dealership's management. The Service Manager or General Manager can help. Almost all problems are solved in this way.

If you are dissatisfied with the decision made by the dealership's management, contact the Honda Power Equipment distributor in your country.

When you call or write, please provide us the following information:

- Model and serial numbers (page 15)
- Name of the dealer who sold you the tiller
- Name and address of the dealer who services your tiller
- Date of purchase
- Your name, address, and telephone number
- A detailed description of the problem

Honda Publications

The shop manual covers complete maintenance and overhaul procedures. It is intended to be used by a skilled technician. The parts catalog provides a complete, illustrated parts list. These publications will give you additional information for maintaining and repairing your tiller. You may order them from your Honda dealer.

MAJOR Honda DISTRIBUTOR ADDRESSES

AUSTRIA

Honda Motor Europe (North)

Hondastraße 1
2351 Wiener Neudorf
Tel. : +43 (0)2236 690 0
Fax : +43 (0)2236 690 480
<http://www.honda.at>

BELGIUM

Honda Motor Europe (North)

Doornveld 180-184
1731 Zellik
Tel. : +32 2620 10 00
Fax : +32 2620 10 01
<http://www.honda.be>
BH_PE@HONDA-EU.COM

BULGARIA

Kirov Ltd.

49 Tsaritsa Yoana blvd
1324 Sofia
Tel. : +359 2 93 30 892
Fax : +359 2 93 30 814
<http://www.kirov.net>
E-mail : honda@kirov.net

CANARY ISLANDS

Automocion Canarias S.A.

Carretera General del Sur, KM. 8,8
38107 Santa Cruz de Tenerife
Tel. : + 34 (922) 620 617
Fax : +34 (922) 618 042
<http://www.aucasa.com>
e-mail: ventas@aucasa.com
e-mail: taller@aucasa.com

CROATIA

Hongoldonia d.o.o.

Jelkovecka Cesta 5
10360 Sesvete – Zagreb
Tel. : +385 1 2002053
Fax : +385 1 2020754
<http://www.hongoldonia.hr>

CYPRUS

Alexander Dimitriou & Sons Ltd.

162, Yiannos Kranidiotis Avenue
2235 Latsia, Nicosia
Tel. : + 357 22 715 300
Fax : + 357 22 715 400

CZECH REPUBLIC

BG Technik cs, a.s.

U Zavodiste 251/8
15900 Prague 5 - Velka Chuchle
Tel. : +420 2 838 70 850
Fax : +420 2 667 11 45
<http://www.honda-stroje.cz>

DENMARK

Tima Products A/S

Tårnfalkevej 16 - Postboks 511
2650 Hvidovre
Tel. : +45 36 34 25 50
Fax : +45 36 77 16 30
<http://www.tima.dk>

FINLAND

OY Brandt AB.

Tuupakantie 7B
01740 Vantaa
Tel. : +358 207757200
Fax : +358 9 878 5276
<http://www.brandt.fi>

FRANCE

Honda Relations Clientèle

TSA 80627
45146 St Jean de la Ruelle cedex
Tel. : +33 02 38 81 33 90
Fax : +33 02 38 81 33 91
<http://www.honda.fr>
relationsclientele.produits-
equipement@honda-eu.com

GERMANY

Honda Motor Europe (North) GmbH

Sprendlinger Landstraße 166
63069 Offenbach am Main
Tel. : +49 69 8300 60
Fax : +49 69 8300 65100
<http://www.honda.de>
info@post.honda.de

GREECE

General Automotive Co S.A.

71 Leoforos Athinon
10173 Athens
Tel. : +30 210 3497809
Fax : +30 210 3467329
<http://www.honda.gr>
info@saracakis.gr

HUNGARY

Mo.Tor.Pedo Co Ltd.

Kamaraerdei ut 3.
2040 Budaors
Tel. : +36 23 444 971
Fax : +36 23 444 972
<http://www.hondakisgepek.hu>
info@hondakisgepek.hu

IRELAND

Honda Distributors (Two Wheels Ltd)

Crosslands Business Park -
Ballymount Road
Dublin 12
Tel. : +353 01 460 2111
Fax : +353 01 456 6539
<http://www.hondaireland.ie>
sales@hondaireland.ie

ITALY

Honda Italia Industriale S.p.A.

Via della Cecchignola, 5/7
00143 Roma
Tel. : +848 846 632
Fax : +39 065 4928 400
<http://www.hondaitalia.com>
info.power@honda-eu.com

LATVIA

Bensons Auto

Kr.Valdemara Street 21, 646 office
Riga, 1010
Tel. : +371 7 808 333
Fax : +371 7 808 332

LITHUANIA

JP Motors Ltd

Kubiliaus str. 6
08234 Vilnius
Tel. : +370 5 2765259
Fax: +370 5 2765250
<http://www.hondapower.lt>

MALTA

The Associated Motors Company Ltd.

New Street in San Gwakkın Road
Mriehel Bypass, Mriehel QRM17
Tel. : +356 21 498 561
Fax : +356 21 480 150

NETHERLANDS

Honda Motor Europe (North)

Afd. Power Equipment-Capronilaan 1
1119 NN Schiphol-Rijk
Tel. : +31 20 7070000
Fax : +31 20 7070001
<http://www.honda.nl>

NORWAY

Berema AS

P.O. Box 454
1401 Ski
Tel. : +47 64 86 05 00
Fax : +47 64 86 05 49
<http://www.berema.no>
berema@berema.no

POLAND

Aries Power Equipment Sp. z o.o.

ul. Wroclawska 25A
01-493 Warszawa
Tel. : +48 (22) 861 43 01
Fax : +48 (22) 861 43 02
<http://www.hondapower.pl>
info@hondapower.pl

PORTUGAL

Honda Portugal, S.A.

Abrunheira
2714-506 Sintra
Tel. : +351 21 915 53 33
Fax : +351 21 915 23 54
<http://www.honda.pt>
mail: honda.produtos@honda-eu.com

REPUBLIC OF BELARUS

Scanlink Ltd.

Kozlova Drive, 9
220037 Minsk
Tel. : +375 172 999090
Fax : +375 172 999900

ROMANIA

Hit Power Motor Srl

Calea Gulesti N° 6-8 - Sector 6
060274 Bucuresti
Tel. : +40 21 637 04 58
Fax : +40 21 637 04 78
<http://www.honda.ro>
hit_power@honda.ro

RUSSIA

Honda Motor Rus Llc

42/1-2, Bolshaya Yakimanka st.
117049, Moscow
Tel. : +74 95 745 20 80
Fax : +74 95 745 20 81
<http://www.honda.co.ru>

SERBIA & MONTEGEGRO

Bazis Grupa d.o.o.

Grcica Milenka 39
11000 Belgrade
Tel. : +381 11 3820 300
Fax : +381 11 3820 301
<http://www.hondasrbija.co.yu>

SLOVAK REPUBLIC (SLOVAKIA)

Honda Slovakia, spol. s r.o.

Prievozska 6 - 821 09 Bratislava
Slovak Republic
Tel. : +421 2 32131112
Fax : +421 2 32131111
<http://www.honda.sk>

SLOVENIA

AS Domzale Moto Center D.O.O.

Blatnica 3A
1236 Trzin
Tel. : +386 1 562 22 42
Fax : +386 1 562 37 05
<http://www.as-domzale-motoc.si>

SPAIN

Greens Power Products, S.L.

Avda. Ramon Ciurans, 2
08530 La Garriga - Barcelona
Tel. : +34 3 860 50 25
Fax : +34 3 871 81 80
<http://www.hondaencasa.com>

SWEDEN

Honda Nordic AB

Box 50583 - Väst kustvägen 17
120215 Malmö
Tel. : +46 (0)40 600 23 00
Fax : +46 (0)40 600 23 19
<http://www.honda.se>
hpesinfo@honda-eu.com

SWITZERLAND

Honda Suisse S.A.

10, Route des Moulrières
1214 Vernier - Genève
Tel. : +41 (0)22 939 09 09
Fax : +41 (0)22 939 09 97
<http://www.honda.ch>

TURKEY

Anadolu Motor Uretim ve

Pazarlama AS

Esentepe mah. Anadolu cad. No:5
Kartal 34870 Istanbul
Tel.: +90 216 389 59 60
Fax.: +90 216 353 31 98
www.anadolumotor.com.tr
antor@antor.com.tr

UKRAINE

Honda Ukraine LLC

101 Volodymyrska Str. - Build. 2
Kiev 01033
Tel. : +380 44 390 14 14
Fax : +380 44 390 14 10
<http://www.honda.ua>

UNITED KINGDOM

Honda (UK) Power Equipment

470 London Road
Slough - Berkshire, SL3 8QY
Tel. : +44 (0)845 200 8000
Fax : +44 (0)1 753 590 732
Website : www.honda.co.uk
email :
customer.servicepe@honda-eu.com

HONDA

The Power of Dreams



Printed on
Recycled Paper