

Masport®

OLYMPIC CYLINDER MOWER

400 Series

<u>Mower</u>	<u>Model</u>	<u>Engine</u>	<u>Shaft Dia</u>	<u>Introduction</u>	<u>Serial Number</u>
019029	400 - PRR	B&S 3.5 I/C	19	Dec 2007	7091916
019039	400 - RRR	B&S 3.5 I/C	19	April 2009	7201157-7911662
019108	400 - RRR	B&S 3.5 I/C	19	June 2015	7924088

PRR = Reel Mowers fitted with a Painted Rear Roller

RRR = Reel Mowers fitted with a Rubber Sleeve over the Painted Rear Roller

019029

019039

Where assembled parts differ, these are shown as "A"

019108

Where assembled parts differ, these are shown as "B"



Approx Ground Speed
5.5 kph



Approx Ground Speed
4.4 kph

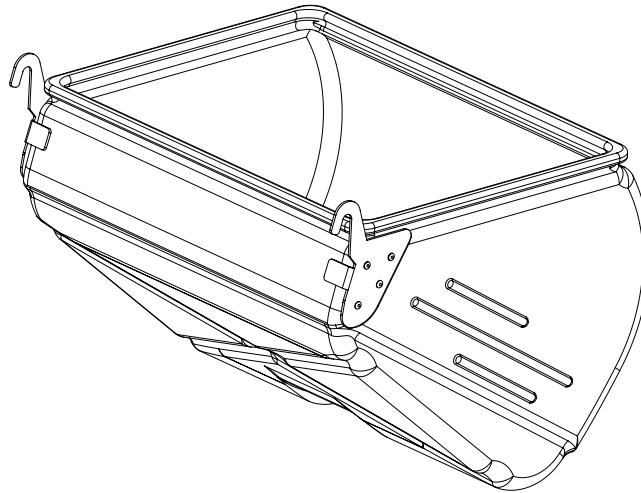
Issue B.0
ECN 03073
Nov 2015 PB
REF # 719039S



NOT ILLUSTRATED

031887	Decal, Caution S/N & dB 400	1
031890	Decal, Trans Cover 400	1
031893	Decal, G/Catcher 400	1
031900	Decal, Caution, Feet & Hands	1
031992	Owner Manual, Reel Mower	1

Part No	Description	Qty
731581	Catcher Assy, 400 Green	1



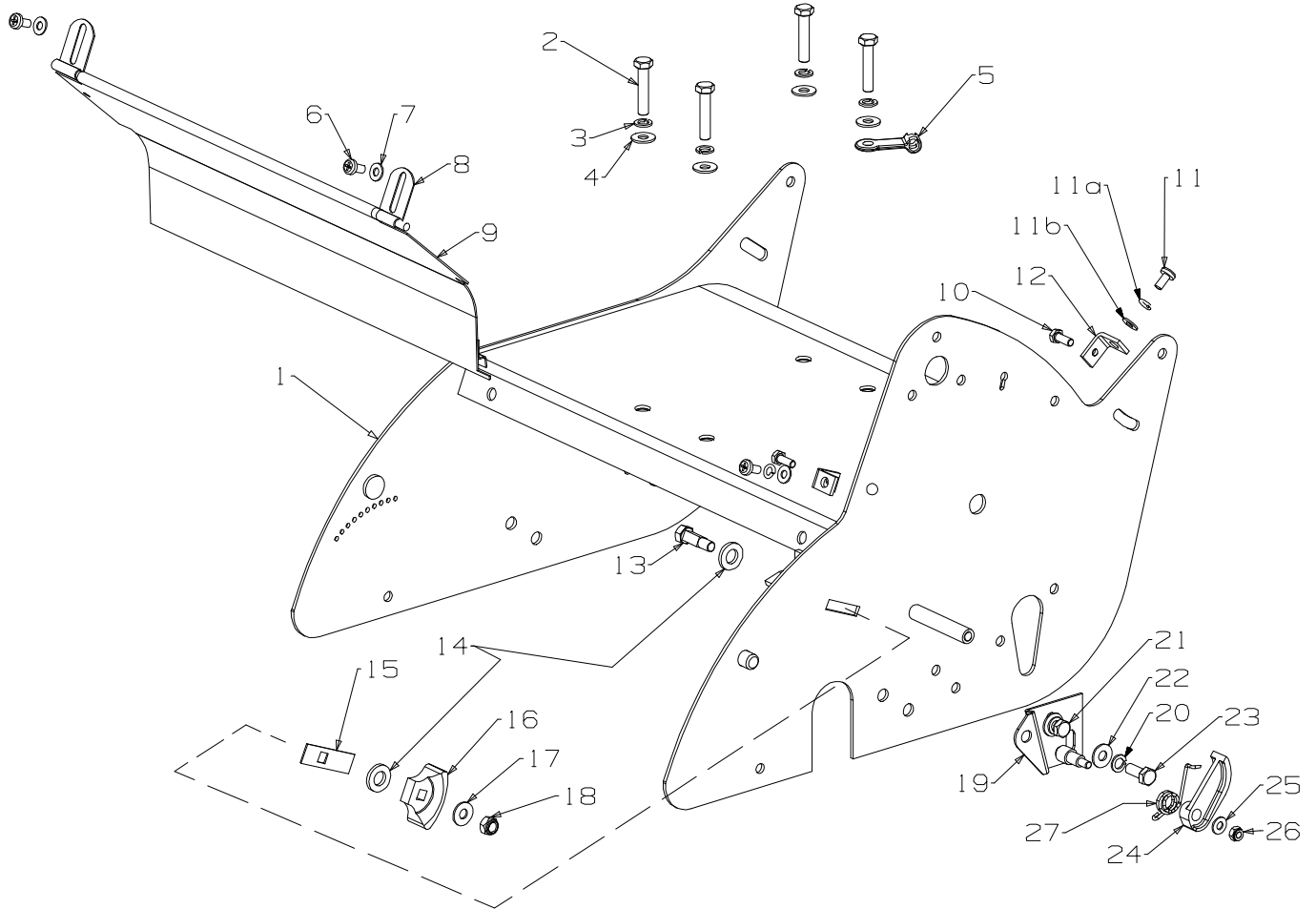
SPARES OPTIONS

732181	Slow Down Kit	1	Converts from A to B
732226	Speed Up Kit	1	Converts from B to A
932087	*Cylinder & Sprocket Assembly	1	

***This assembly is designed to replace the style of Cutting Cylinder that used a 5/8 UNF LH thread to attach the sprocket assembly**



Chassis Assembly (Common to all)



Item No	Part No	Description	Qty	Item No	Part No	Description	Qty
1	031580	Chassis Assy- 400 Green	1	14	006028	Washer, Flt 12x22x3.0	2
2	501843	Set Screw, M8x40 Hex	4	15	002845	Sealplate-Chain Adjuster	1
3	503747	Washer, Spg 8	4	16	002844	Adjuster- Chain, Fixed Nylon	1
4	501606	Washer, Flt 8x19x1.6	4	17	501606	Washer, Flt 8x19x1.6	1
5	581527	Retainer, Clutch Cable	1	18	501793	Nut, M8 Hex Nyloc 8 Thck	1
6	503591	Screw, Pan M6x12	2	19	004942	Plate Assy, Mounting	1
7	501703	Washer, Flt 6x14x1.2	2	20	503747	Washer Spg 8	2
8	002589	Bracket, Grass Chute	2	21	501571	Screw, Set M 8X 16 8.8 Hex	1
9	008900	Deflector, Grass- 400	1	22	501606	Washer, Flt 8x19x1.6	2
10	501702	Set Screw, M6x16 Hex	2	23	501597	Set Screw, M8x20 Hex	1
11	503591	Screw, Pan M6x12	2	24	004963	Adjuster- Chain, Tension Nylon	1
11a	500201	Washer, Spg 6	2	25	501703	Washer, Flt 6x14x1.2	1
11b	501703	Washer, Flt 6x14x1.2	2	26	501764	Nut, M6 Hex Nyloc 6 Thck	1
12	031915	Bracket- Chain Cover	2	27	004945	Spring	1
13	002848	Bolt- Adjuster, Chain	1				

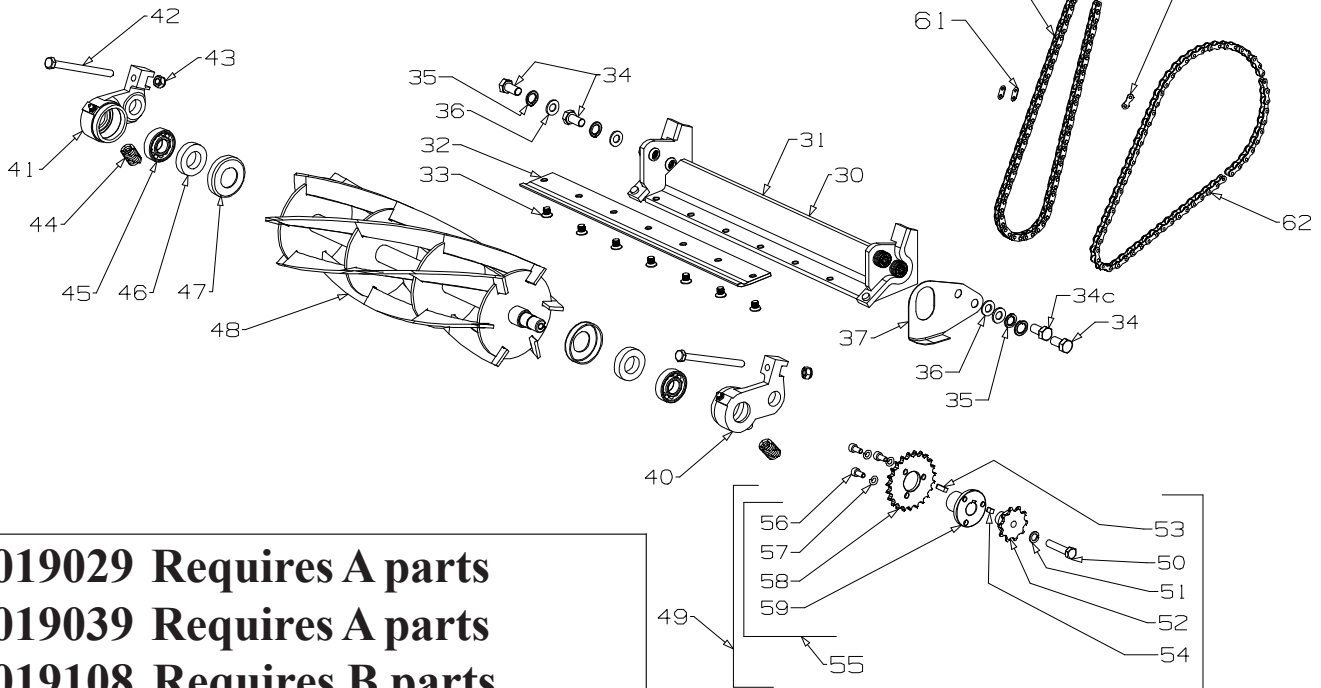
When ordering PLEASE QUOTE PART NUMBER & Description, NOT Illustration No.

Determine right or left hand side from standing in operating position (standing at handle).

Bold Text = Assemblies, **Bulleted Text** * = Items included in the Assemblies & may not be available as a spares item.



Cutting Cylinder Assembly Requires either A or B parts



019029 Requires A parts
019039 Requires A parts
019108 Requires B parts

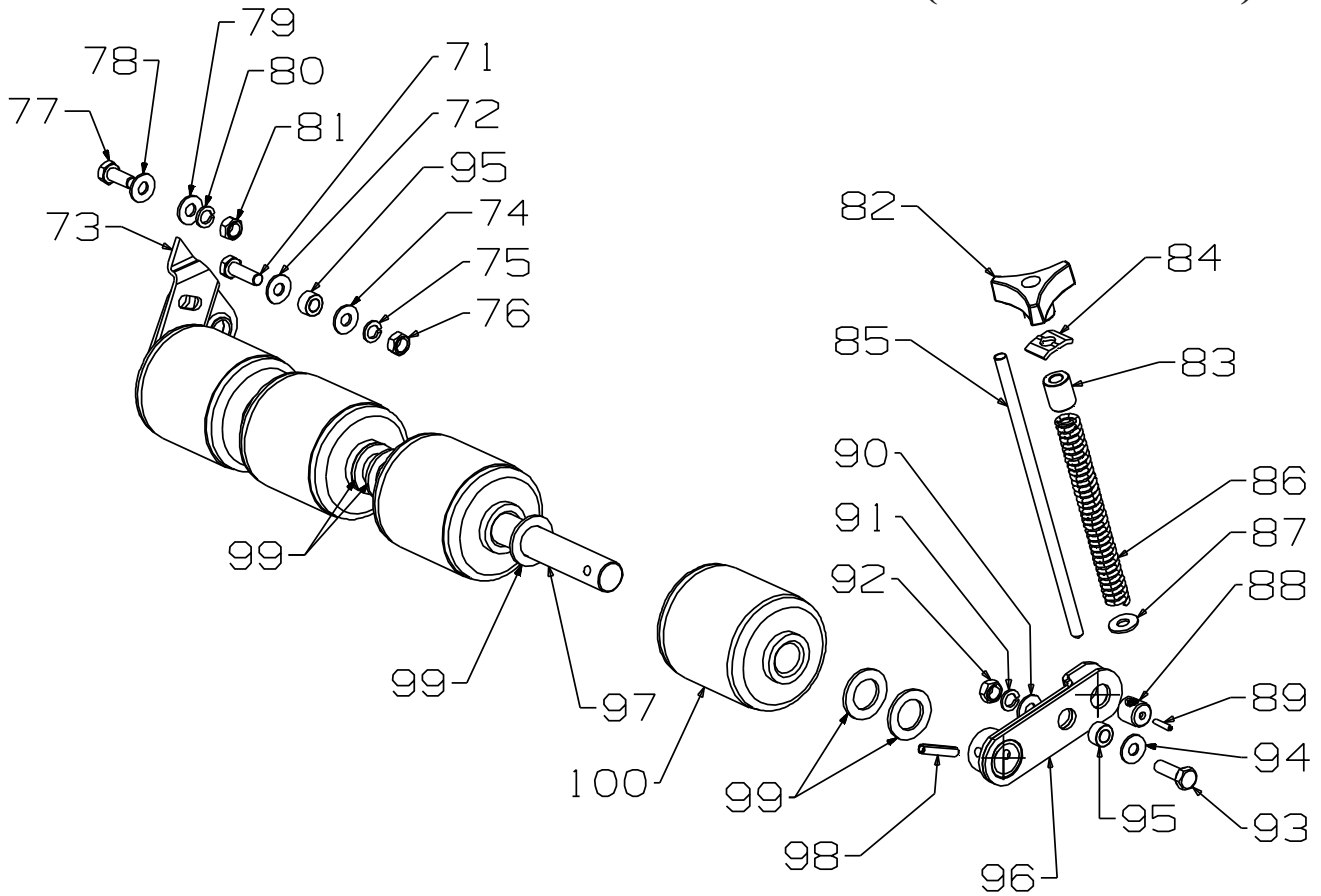
Item No	Part No	Description	Qty	Item No	Part No	Description	Qty
30	009853	Backplate Brkt, Blade Assy 400 (incl items,31,32,33)	1	49 A	032006	Sprocket Assy-10/23 (includes items 50,51,52,53,54 and 55A)	1
31	*009861	Bracket Assy Backplate 400	1	49 B	032223	Sprocket Assy-10/26 (includes items 50,51,52,53,54 and 55B)	1
32	*009872	Blade, Baseplate 400	1	50	*501843	Screw, Set M8 x 40	1
33	*008611	Screw, CSK M8x10 Allen Head	7	51	*503747	Washer Spg 8	1
34	501760	Screw, Set M10x20 Hex	3	52	*032002	Sprocket 10T	1
34c A	501760	Screw, Set M10x20 Hex	1	53	*032005	Key 5x5x16	1
34c B	502207	Screw, Set M10x20 (Short Head)	1	54	*032004	Key 5x5x10	1
35	503897	Washer, Spg 10	4	55 A	*032045	Sprocket Assy - 23 Key (incl items 56,57,58A and 59)	1
36	501704	Washer, Flt 10x19x1.6	4	55 B	*032222	Sprocket Assy - 26 Key (incl items 56,57,58B and 59)	1
37	002561	Plate- Seal, Chaincase	1	56	*502004	Screw, Cap M6x12	3
40	032023	Housing- Assy Bearing, LH	1	57	*500201	Washer, Spg 6	3
41	032024	Housing- Assy Bearing, RH	1	58 A	*032003	Sprocket 23T	1
42	006282	Bolt, Set NF 5/16"x4" Hex	2	58 B	*032174	Sprocket 26T	1
43	007240	Nut, NF 5/16 Hex Nyloc Type "P"	2	59	*032001	Boss Sprocket Key	1
44	002581	Spring- Baseplate	2	60 A	002835	Chain- 0.23xP 3/8", 75P	1
45	503273	Bearing, Ball 17x40x12 6203 2S	2	61	*731972	Link- Chain 3/8"	1
46	002583	Seal- Felt	2	60 B	032187	Chain- 0.23xP 3/8", 77P	1
47	005211	Cover- Dust, Cylinder Bearing	2	61	*731972	Link- Chain 3/8"	1
48	032013	Cylinder Assy Cutting-400, Keyed	1	62	004299	Chain- 0.205x P 1/2", 59P	1
				63	*731971	Link- Chain 1/2"	1

When ordering PLEASE QUOTE PART NUMBER & Description, NOT Illustration No.
Determine right or left hand side from standing in operating position (standing at handle).

Bold Text = Assemblies, Bulleted Text * = Items included in the Assemblies & may not be available as a spares item.



Front Roller Assembly (Common to all)



Item No	Part No	Description	Qty	Item No	Part No	Description	Qty
70	005013	Spindle & Brkt Assy 400	1	87	*501606	Washer, Flt 8x19x1.6	1
71	*501598	Set Screw, M8x25 Hex	1	88	*004990	Spindle, Trunnion	1
72	*501606	Washer, Flt 8 x 19 x 1.6	1	89	*032087	Pin, Tension 3.0 x 16	1
73	*004983	Bracket- Front Roller, RH	1	90	*501606	Washer, Flt 8x19x1.6	1
74	*501606	Washer, Flt 8x19x1.6	1	91	*503747	Washer, Spg 8	1
75	*503747	Washer, Spg 8	1	92	*501602	Nut, M8 Hex	1
76	*501602	Nut, M8 Hex	1	93	*501598	Set Screw, M8x25 Hex	1
77	*501597	Set Screw, M8x20 Hex	1	94	*501606	Washer, Flt 8x19x1.6	1
78	*501606	Washer, Flt 8x19x1.6	1	95	*004991	Bush- Pivot, Front Roller	2
79	*501606	Washer, Flt 8x19x1.6	1	96	*004984	Bracket Assy- Adj, Front Roller	1
80	*503747	Washer, Spg 8	1	97	*004976	Spindle Assy Front 400	1
81	*501602	Nut, M8 Hex	1	98	*007496	Pin, Tension 6.0 x 30	1
82	*574230	Knob- Plastic, M8 Insert	1	99	*501432	Washer, Flt 20x33x4.0	8
83	*031910	Spacer- Knob	1	100	031911	Roller-Front Assy (1 Only)	4
84	*004973	Plate Slipper	1		*005476	Shell-Front Roller	1
85	*004988	Spindle- Adj, Front Roller	1		*005478	Cap-End	2
86	*004691	Spring- Height Adjust	1				

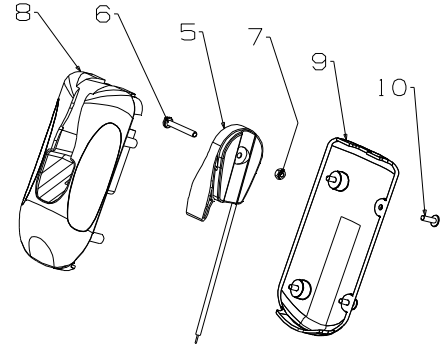
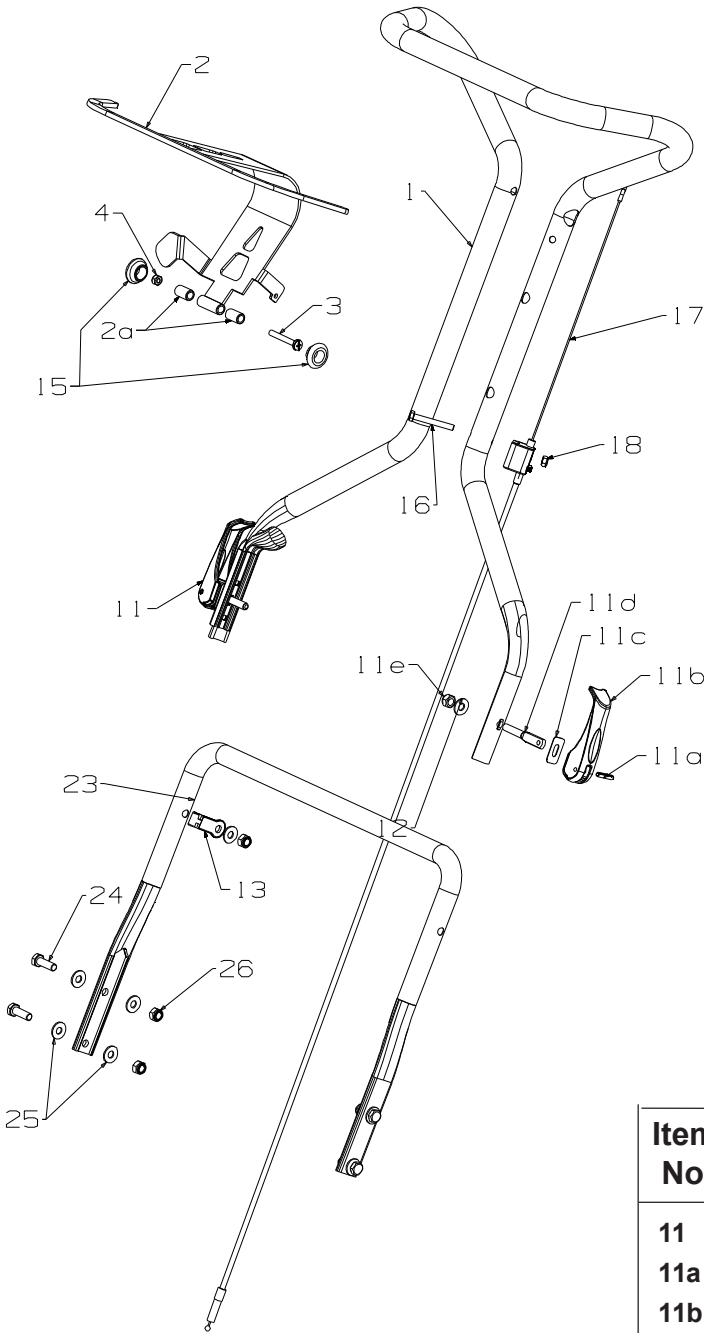
When ordering PLEASE QUOTE PART NUMBER & Description, NOT Illustration No.

Determine right or left hand side from standing in operating position (standing at handle).

Bold Text = Assemblies, Bulleted Text * = Items included in the Assemblies & may not be available as a spares item.



MSV Handle Assembly (used on 019029 & 39)



Item No	Part No	Description	Qty
1	731847	Handle Upper R/MWR	1
2	579279	Bail Arm Assy, SP MSV	1
2a	583504	Pivot- Bail Arm	2
3	503883	Bolt Hex M8 x 100	1
4	501793	Nut-M8 Nyloc	1
5	583458	Throttle Control & Cable, Wscn	1
6	503604	*Screw, Pan M6x45	1
7	501764	*Nut, M6 Nylocx 6 Thck	1
8	983351	Mount Throttle, Top MSV	1
9	583340	Cover Throttle Bottom	1
10	503650	Screw; S/T #12x11/16"	4

Item No	Part No	Description	Qty
11	780456	Cam Lock Assy	2
11a	503369	*Pin, Tension 5.0 x25	1
11b	582419	*Lever Handle Locking	1
11c	016777	*Washer Slipper	1
11d	583041	*Stud Handle Lock 61mm	1
11e	501793	*Nut M8 Hex Nylocx Thck	1
12	501606	Washer, Flat 8x19x1.6	2
13	581527	Retainer, Clutch Cable	1
15	503882	Grommet Blanking 3/4"(19mm)	2
16	503558	Screw-Set, M6 x 45	1
17	031990	Cable-Clutch, Reel Mower	1
18	501764	Nut-M6 Nyloc	1
23	031848	Handle- Lower, 400	1
24	501597	Screw, Set M8x20	4
25	501606	Washer, Flat 8x19x1.6	8
26	501793	Nut, M8 Nylocx 8 Thck	4

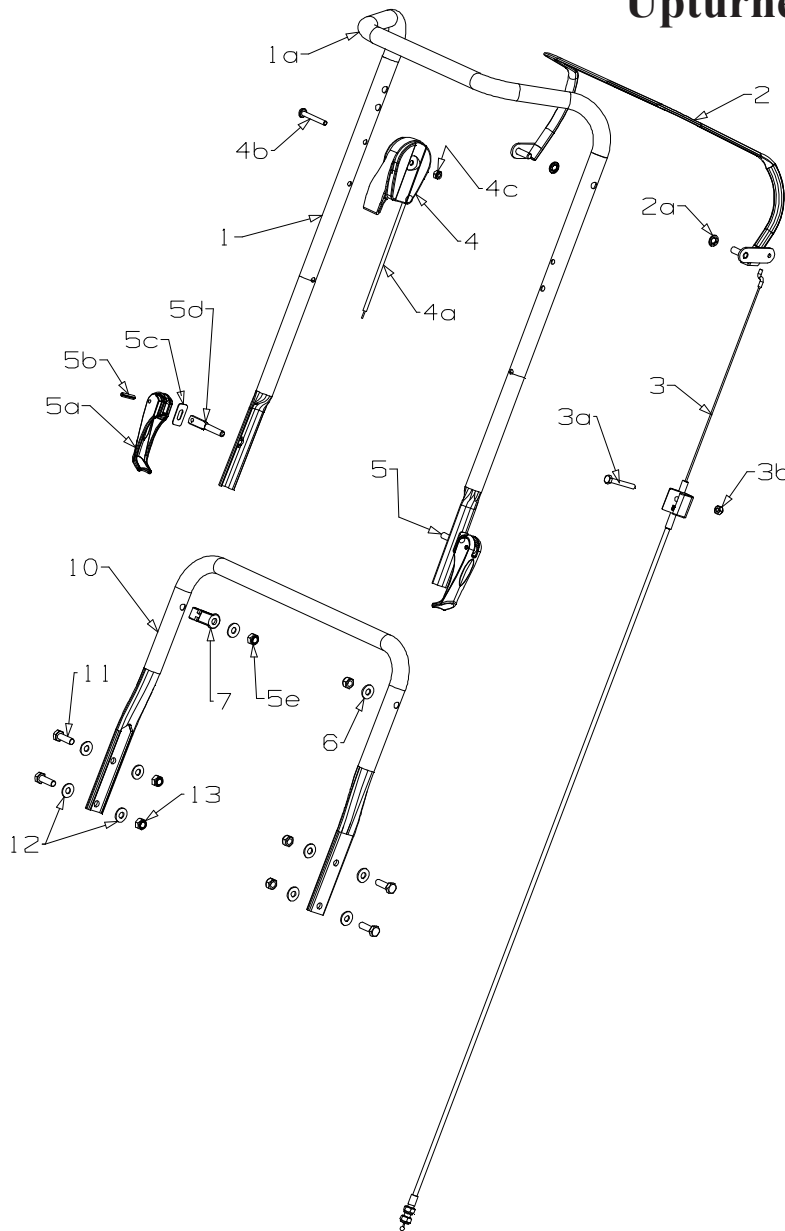
When ordering PLEASE QUOTE PART NUMBER & Description, NOT Illustration No.

Determine right or left hand side from standing in operating position (standing at handle).

Bold Text = Assemblies, Bulleted Text * = Items included in the Assemblies & may not be available as a spares item.



Uprturned Handle Assembly (used on 019108)



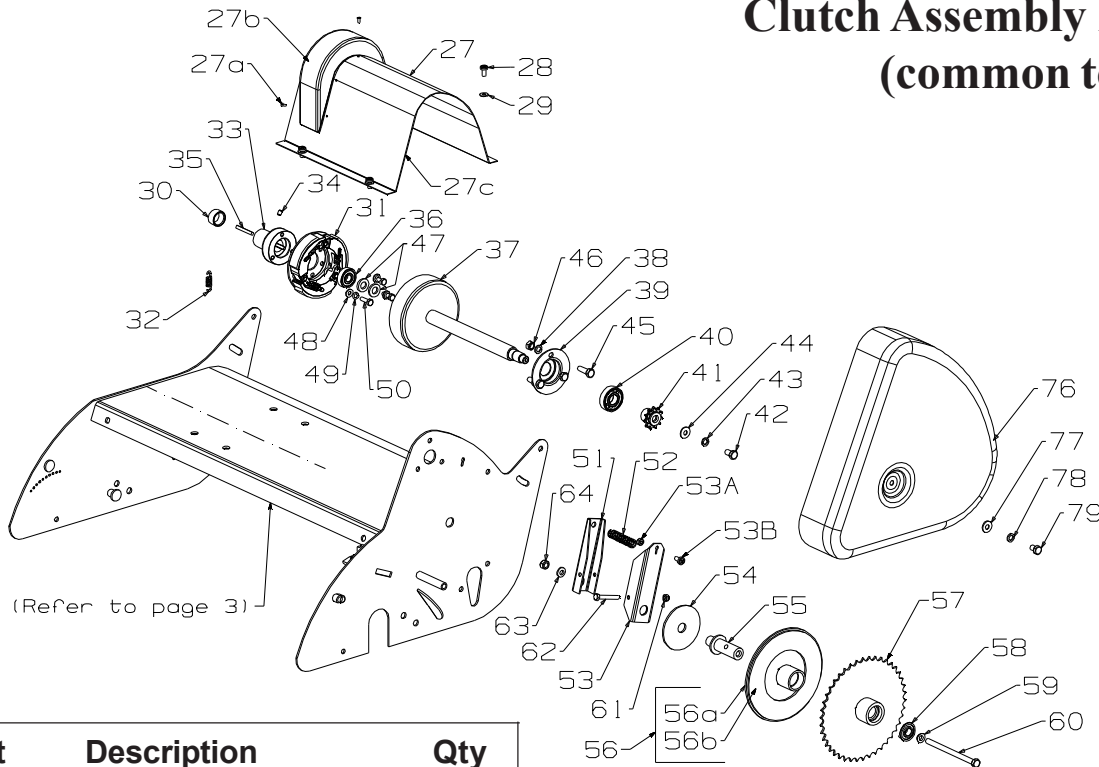
Item No	Part No	Description	Qty	Item No	Part No	Description	Qty
1/1a	773155	Handle- Upper, UPT OPC Short	1	5	780456	Cam Lock Assembly	2
2	982161	Bail Arm Assy, SP	1	5a	580313	*Lever- Handle Locking	1
2a	501365	Clip- Starloc, 5/16"	2	5b	503369	*Pin, Tension 5.0 x 22	1
3	031990	Cable- Clutch, Reel Mower	1	5c	016777	*Washer- Slipper S/S	1
3a	503558	Screw, Set M6 x 45	1	5d	580690	*Stud- Handle Lock, 64mm	1
3b	501764	Nut, M6 Hex Nyloc x 6mm thick	1	5e	501793	*Nut, M8 Hex Nyloc 8mm thick	1
4/4a	583458	Throttle Control & Cable Wscn	1	6	501606	Washer, Flat 8 x 19 x 1.6	2
4b	503604	*Screw, Pan M6x45	1	7	581527	Retainer- Clutch Cable	1
4c	501764	*Nut, M6 Nylocx 6 Thck	1	10	031848	Handle-Lower, Reel Mower	1
				11	501597	Screw, Set M8 x 20 Hex	4
				12	501606	Washer, Flat 8 x 19 x 1.6	4
				13	501793	Nut, M8 Hex Nyloc 8mm thick	4

When ordering PLEASE QUOTE PART NUMBER & Description, NOT Illustration No.
Determine right or left hand side from standing in operating position (standing at handle).

Bold Text = Assemblies, Bulleted Text * = Items included in the Assemblies & may not be available as a spares item.



Clutch Assembly B&S (common to all)



Item No	Part No	Description	Qty	Item No	Part No	Description	Qty
27	731583	Cover- Trans, 400 GRN	1	52	031845	Spring- Clutch	1
27a	503429	*Rivet Pop 3.2 x4.8 73 AS4-3	4	53	031830	Lever Carrier- Clutch	1
27b	031907	*Cover Trans Moulded	1	53a	501764	Nut-M6 Nyloc	1
28	503591	Screw, Set M6x12	4	53b	503591	Screw-Pan M6 x 12	1
29	501703	Washer, Flt 6x14x1.2	4	54	031843	Washer. FLT 16.5x75x3.0	1
30	031958	Spacer- Drive Shaft, 13mm	1	55	031840	Post- Clutch	1
31	031912	Clutch- Drive Assy	1	56	031988	Sprocket-11T, Clutch Disk	1
32	*005634	Clutch Spring	3	56a	031986	*Sprocket- Clutch Plate Assy	1
33	031913	Boss- Clutch, 19 Dia (536178 Key)	1	56b	031987	*Liner- Clutch Face Cork	1
34	501719	Screw, Grb M6x8	2	57	031963	Sprocket- 42T, Plate & Boss Assy	1
35	536178	Key- Engine 3/16"SQx24	1	58	503901	Bearing, Ball 12x28x8 6001 2RSH	1
36	501213	Bearing, Ball 12x32x10 6201 2RS	1	59	031965	Washer- Centralizing Brass	1
37	031579	Drum Assy, Clutch 400	1	60	503938	Bolt, M8x120 Hex	1
38	503747	Washer, Spg 8	3	61	501764	Nut, M6 Nyloc 6 Thck	1
39	002834	Housing- Bearing	1	62	580160	Screw, Set M6x50 Hex	1
40	503273	Bearing-Ball 17x40x12 6203 2S	1	63	031842	Washer, Thrust	1
41	002818	Sprocket- 11T, Drive	1	64	501793	Nut, M8 Hex Nyloc 8 Thck	1
42	501715	Screw, Set M8x15 1mm Pitch	1	76	031585	Cover - Chaincase- Green	1
43	503747	Washer, Spg 8	1	77	501606	Washer, Flt 8x19x1.6	1
44	501606	Washer, Flt 8x18x1.6	1	78	503747	Washer, Spg 8	1
45	501597	Screw, Set M8x20 Hex	3	79	501863	Screw Set, M8x12	1
46	501602	Nut, M8 Hex	3				
47	006028	Washer, Flt 12x22x3.0	2				
48	501703	Washer, Flt 6x14x1.2	3				
49	500201	Washer, Spg 6	3				
50	503223	Screw, Set M6x16 HT8.8	3				
51	031831	Lever- Clutch	1				

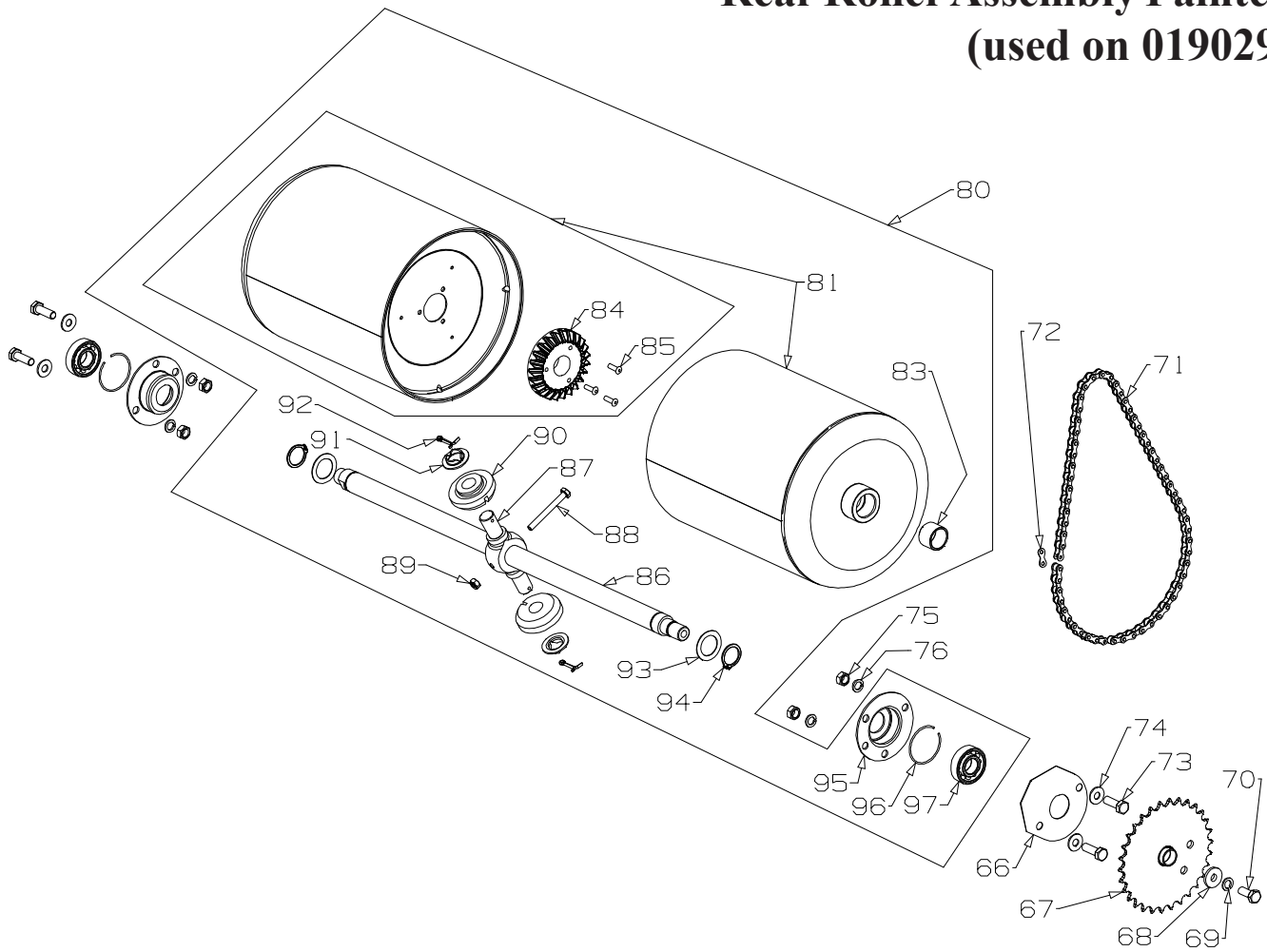
When ordering PLEASE QUOTE PART NUMBER & Description, NOT Illustration No.

Determine right or left hand side from standing in operating position (standing at handle).

Bold Text = Assemblies, Bulleted Text * = Items included in the Assemblies & may not be available as a spares item.



Rear Roller Assembly Painted (used on 019029)



Item No	Part No	Description	Qty	Item No	Part No	Description	Qty
66	002618	Plate- Seal, Bearing	1	80	031916	Roller-Rear,Assemble (Painted)	1
67 A	002604	Sprocket & Boss Assy, Rear Roller	1	81	*031954	Roller-Rear,Half (Painted)	2
67 B	032188	Sprocket & Boss Assy, Rear Roller	1	83	*007616	Bush- Rear Roller	1
68	503872	Washer, Flt 8x20x3.0	1	84	*002707	Gear-Bevel, 24t	1
69	503747	Washer, Spg 8	1	85	*503399	Rivet-Pop, 4.8 x 13 73 SS 6-8	3
70	501717	Screw, Set M8x20 1mm Pitch	1	86	*008945	Spindle-Rear Roller400	1
71 A	004929	Chain, 3/16" x 1/2, 40P	1	87	*008943	Carrier-Bevel Pinion	1
71 B	032186	Chain, 3/16" x 1/2, 42P	1	88	*567292	Bolt-Hex M6 x 55 HT 8.8	1
72	*731971	Link, Chain 1/2	1	89	*501764	Nut, M6 Hex Nyloc	1
72	*731971	Link, Chain 1/2	1	90	*002708	Pinion-Bevel, 14T	2
73	501597	Screw, Set M8x20	4	91	*008944	Collar	2
74	501606	Washer, Flt 8x19x1.6	4	92	*007473	Split Pin, 3.0dia x 30	2
75	501602	Nut, M8 Hex	4	93	*002732	Washer-Flt, 22 x 40 x 2	2
76	503747	Washer, Spg 8	4	94	*007260	Circlip- 7/8" ext	2
				95	*000409	Housing-Bearing	2
				96	*004292	Ring-Bearing Housing	2
				97	*503273	Bearing-Ball 17x40x12 6203 2S	2

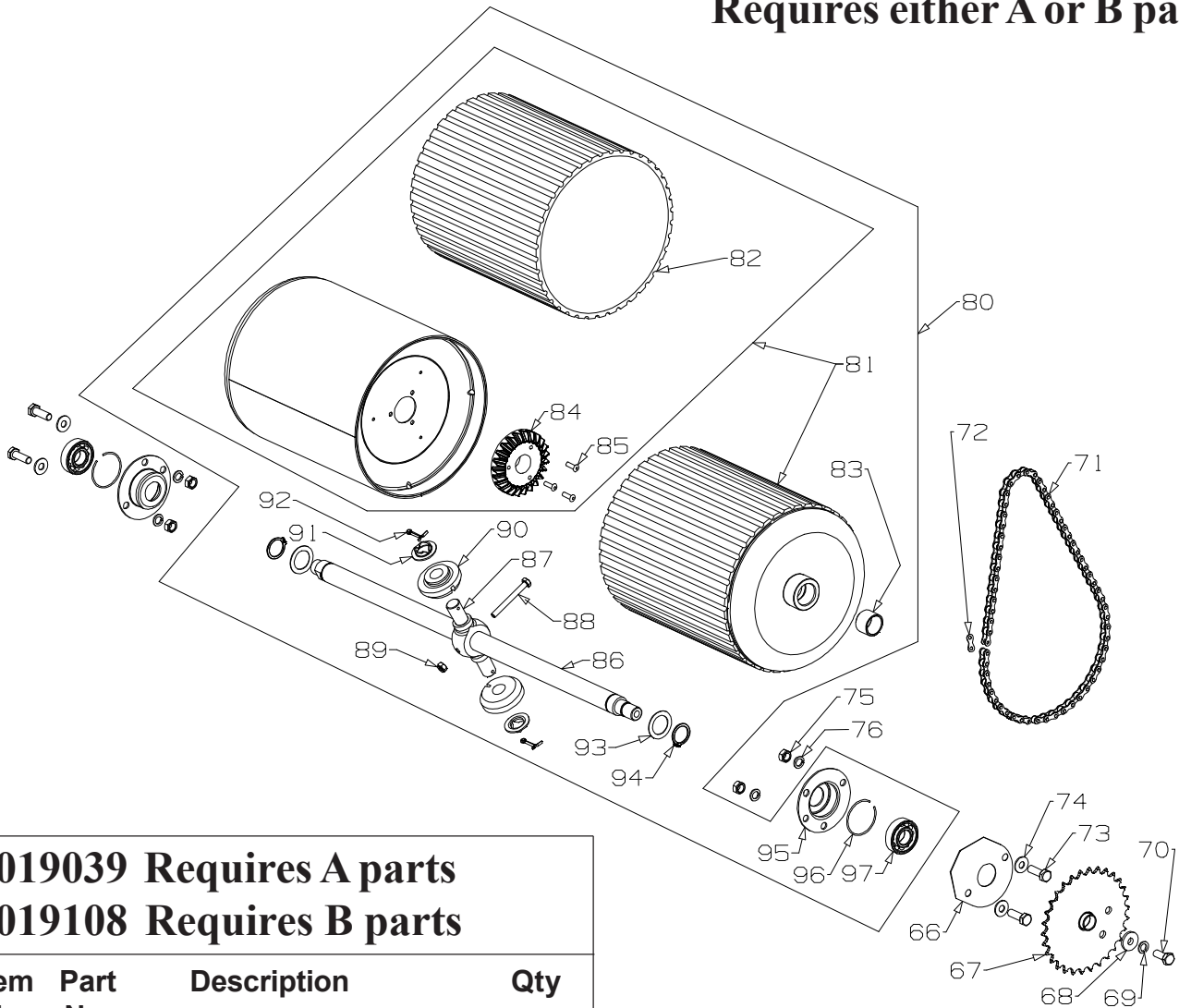
When ordering PLEASE QUOTE PART NUMBER & Description, NOT Illustration No.

Determine right or left hand side from standing in operating position (standing at handle).

Bold Text = Assemblies, Bulleted Text * = Items included in the Assemblies & may not be available as a spares item.



Rear Roller Assembly Sleeved Requires either A or B parts



019039 Requires A parts
019108 Requires B parts

Item No	Part No	Description	Qty
66	002618	Plate- Seal, Bearing	1
67 A	002604	Sprocket & Boss Assy, Rear Roller	1
67 B	032188	Sprocket & Boss Assy, Rear Roller	1
68	503872	Washer, Flt 8x20x3.0	1
69	503747	Washer, Spg 8	1
70	501717	Screw, Set M8x20 1mm Pitch	1
71 A	004929	Chain, 3/16" x 1/2, 40P	1
71 B	032186	Chain, 3/16" x 1/2, 42P	1
72	*731971	Link, Chain 1/2	1
73	501597	Screw, Set M8x20	4
74	501606	Washer, Flt 8x19x1.6	4
75	501602	Nut, M8 Hex	4
76	503747	Washer, Spg 8	4
80	008953	Roller-Rear,Assemble (Slved)	1
81	*031951	Roller-Rear,Half (Slved)	2
82	*004618	Sleeve-Rubber,Rear Roller400	1

Item No	Part No	Description	Qty
83	*007616	Bush- Rear Roller	1
84	*002707	Gear-Bevel, 24t	1
85	*503399	Rivet-Pop, 4.8 x 13 73 SS 6-8	3
86	*008945	Spindle-Rear Roller400	1
87	*008943	Carrier-Bevel Pinion	1
88	*567292	Bolt-Hex M6 x 55 HT 8.8	1
89	*501764	Nut, M6 Hex Nyloc	1
90	*002708	Pinion-Bevel, 14T	2
91	*008944	Collar	2
92	*007473	Split Pin, 3.0dia x 30	2
93	*002732	Washer-Flt, 22 x 40 x 2	2
94	*007260	Circlip- 7/8" ext	2
95	000409	Housing-Bearing	2
96	004292	Ring-Bearing Housing	2
97	503273	Bearing-Ball 17x40x12 6203 2S	2

When ordering PLEASE QUOTE PART NUMBER & Description, NOT Illustration No.
Determine right or left hand side from standing in operating position (standing at handle).

Bold Text = Assemblies, **Bulleted Text** * = Items included in the Assemblies & may not be available as a spares item.