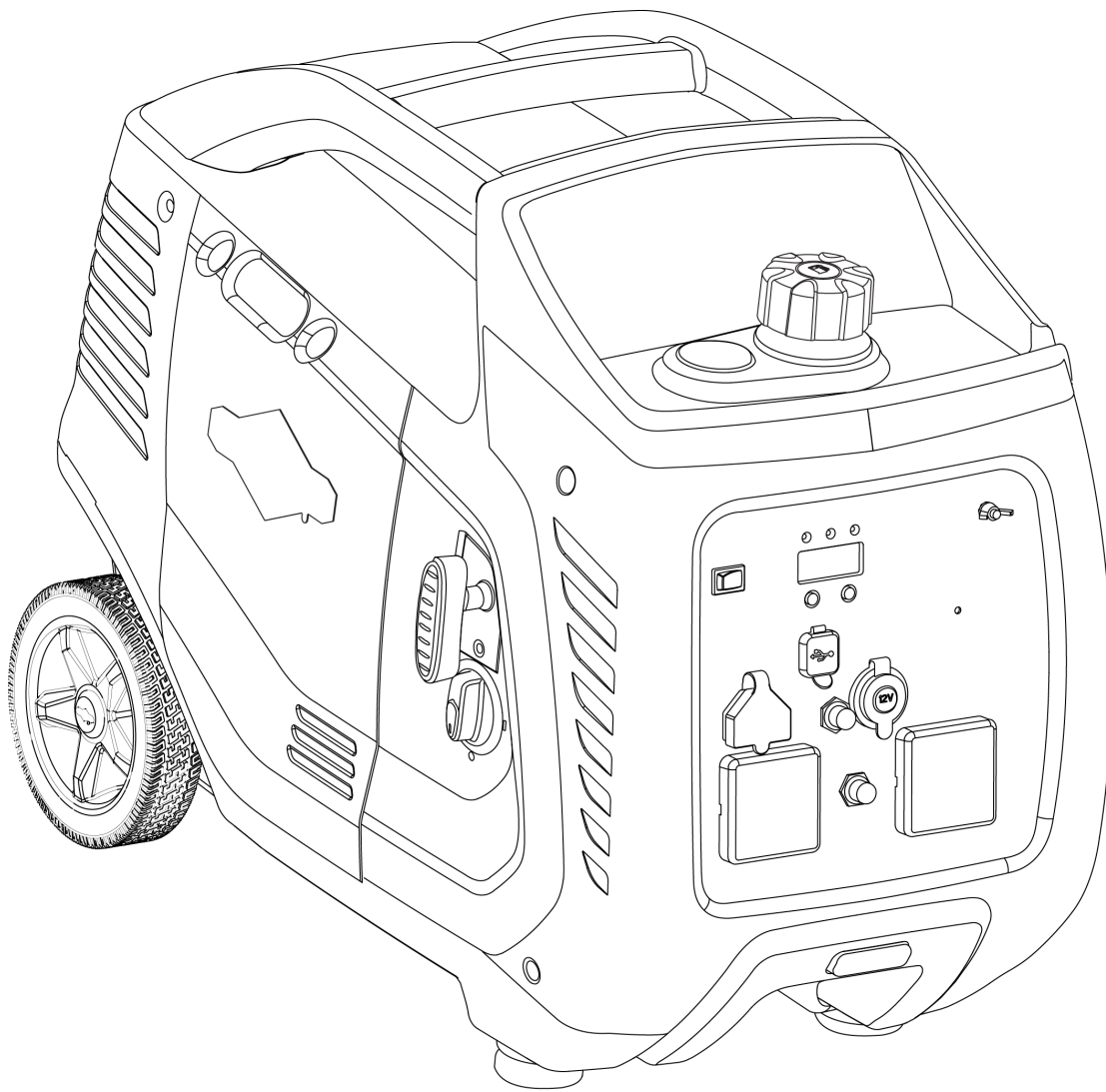




Parts Manual

Mfg. No: 030808-00
3,000 Watt Briggs & Stratton Inverter
Generator (AUS)



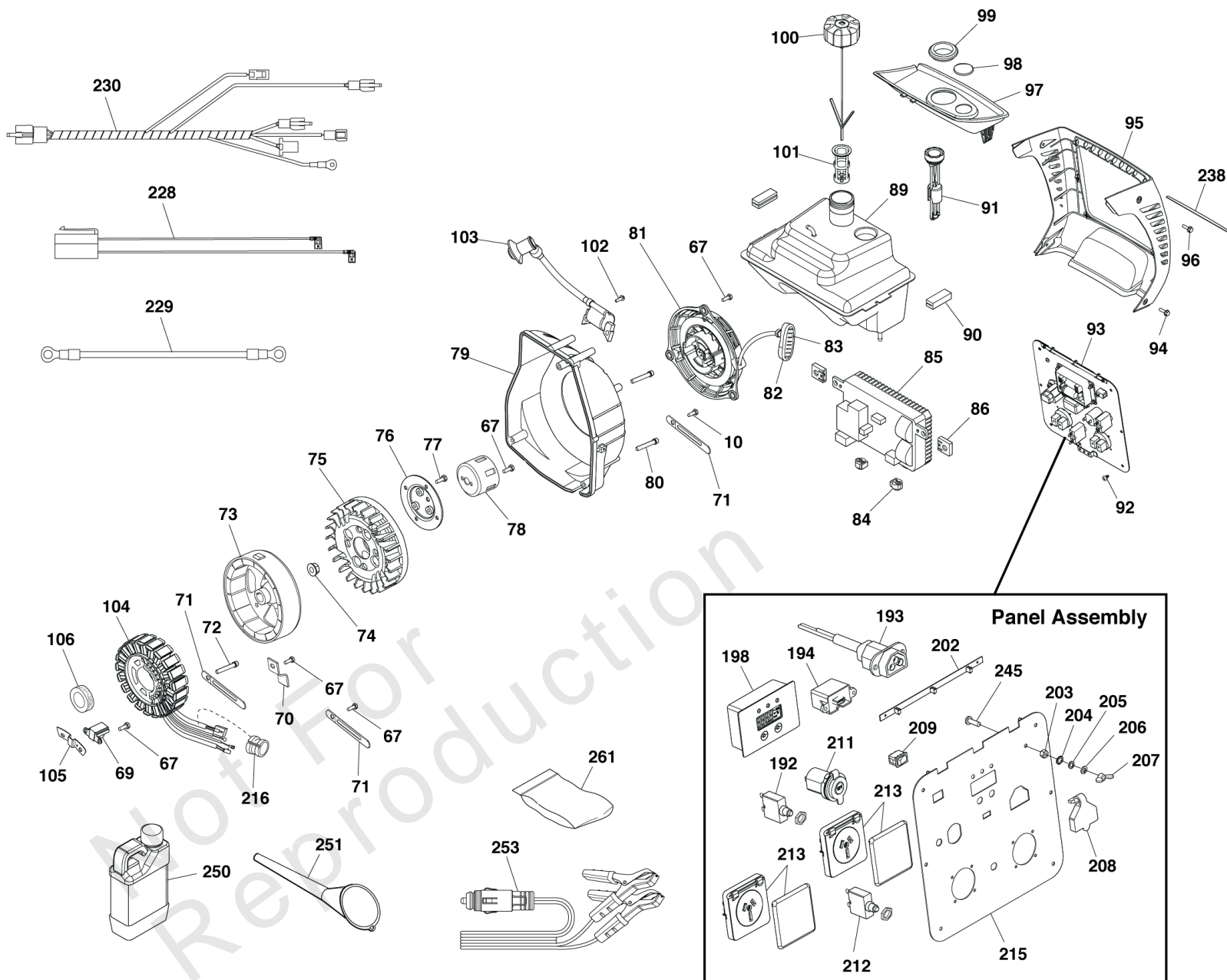
Model Components	Page
Alternator & Control Panel (80098769p1).....	4
Main Unit (80098769p2).....	8
Main Unit Engine (80098769p3).....	12
Wiring Diagram (80098768WDS).....	16
Torque Specification Chart.....	18

Not For
Reproduction

Alternator & Control Panel (80098769p1)

Note: Unless noted otherwise, use the standard torque specifications

Mfg. No: 030808-00



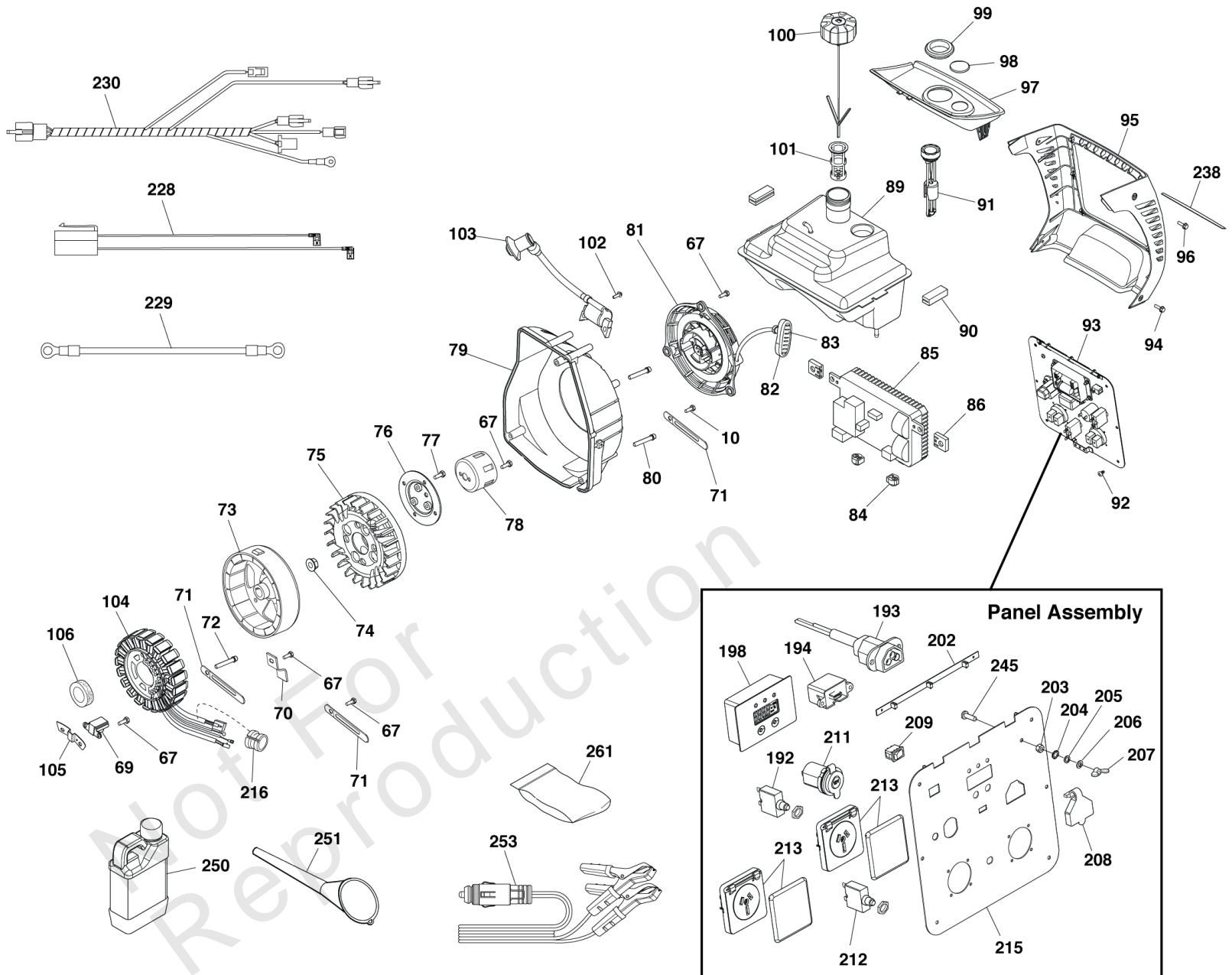
Alternator & Control Panel (80098769p1)

REF NO	PART NO	QTY	DESCRIPTION
10	-----	1	SCREW
67	-----	3	BOLT-M6 x 12
69	705457	1	TRIGGER-IGNITION
70	707320	1	BRACKET
71	707319	3	* BRACKET
72	-----	1	SCREW-M6 x 60
73	705458	1	ROTOR
74	-----	1	NUT, FLANGE M14
75	705459	1	FAN
76	-----	1	TERMINAL
77	-----	4	BOLT-M6 x 16
78	705466	1	CUP-FLYWHEEL
79	-----	1	COVER-FAN
80	-----	3	BOLT-M6 x 55
81	705465	1	STARTER-REWIND
82	311414GS	1	INSERT, Grip
83	-----	1	INSERT-GRIP
84	-----	2	MOUNT-VIBRATION
85	84006694	1	INVERTER
86	-----	2	MOUNT-VIBRATION
89	707176	1	TANK-FUEL
90	319941GS	2	MOUNT-VIBRATION
91	319933GS	1	GAUGE
92	-----	4	SCREW
93	84006699	1	PANEL-CONTROL
94	-----	2	SCREW-M5 x 30
95	319927GS	1	COVER-PANEL
96	-----	2	SCREW-M6 x 56
97	319929GS	1	TRAY-FUEL
98	706134	1	PLUG-SIGHT
99	705490	1	GROMMET-FUEL
100	317134GS	1	CAP-FUEL
101	317441GS	1	FILTER, Filler Neck
102	-----	1	SCREW
103	705463	1	COIL-IGNITION
104	84006698	1	STATOR
105	-----	1	BRACKET
106	-----	1	SEAL-OIL
192	84006691	1	BREAKER, Circuit 5A
193	705488	1	PORT-PARALLEL
194	319946GS	1	PORT-USB
198	84006690	1	MODULE
202	319945GS	1	PCB-LED
203	207743GS	1	NUT
204	91719GS	1	WASHER
205	207806GS	1	WASHER
206	207805GS	1	WASHER
207	187424GS	1	NUT, WING, M5 X 0.8
208	705478	1	COVER-PORT
209	311442GS	1	SWITCH
211	314531GS	1	OUTLET, 12VDC

Alternator & Control Panel (80098769p1)

Note: Unless noted otherwise, use the standard torque specifications

Mfg. No: 030808-00



Alternator & Control Panel (80098769p1)

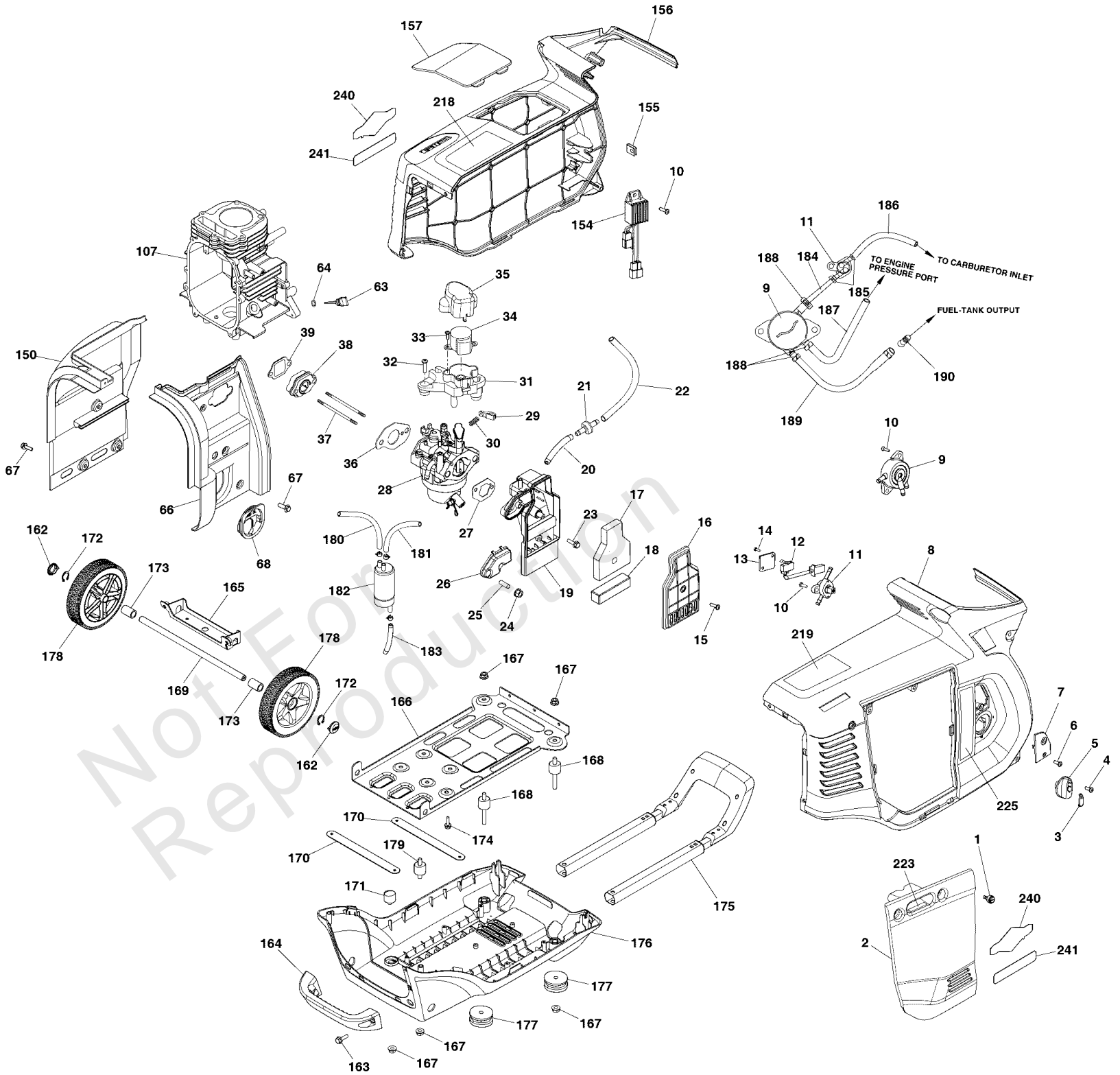
REF NO	PART NO	QTY	DESCRIPTION
212	707170	1	CIRCUIT BREAKER, 15A
213	314532GS	1	OUTLET
215	84006689	1	PANEL, CONTROL
216	-----	1	COVER-RUBBER
228	314479GS	1	WIRE
229	314483GS	1	WIRE, Ground
230	771933	1	WIRE-MAIN
238	771883	1	DECAL
245	76040GS	1	SCREW
250	100005	1	OIL-4 CYCLE 30W 18OZ.
251	706357	1	FUNNEL
253	187876GS	1	CABLE, BATTERY CHARGE
261	703574	1	KIT, Tool
--	706139		JET-MAIN, High Altitude, 5000 ft -(Optional Accessory - Not Included)

Not For Reproduction

Main Unit (80098769p2)

Note: Unless noted otherwise, use the standard torque specifications

Mfg. No: 030808-00



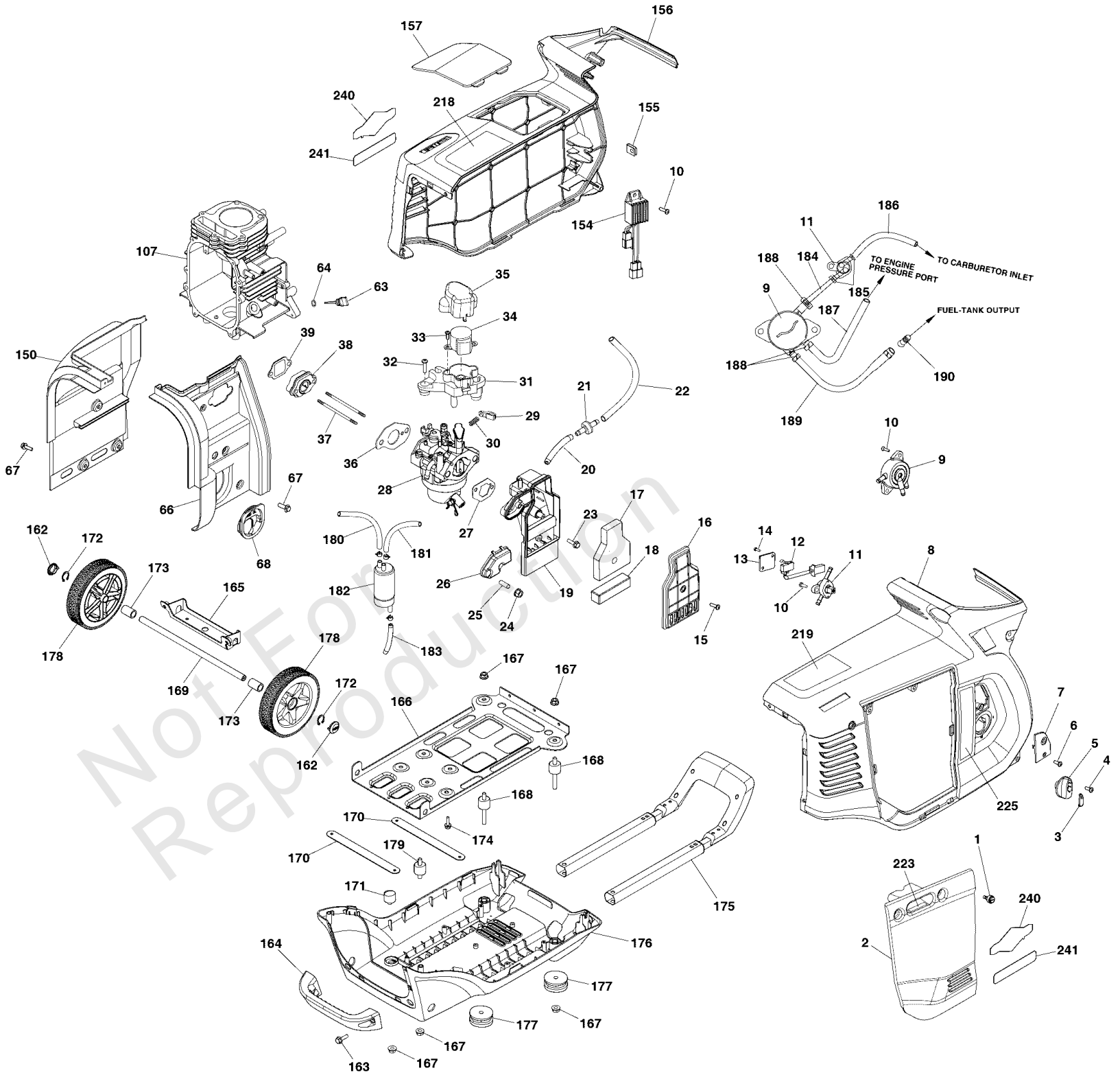
Main Unit (80098769p2)

REF NO	PART NO	QTY	DESCRIPTION
1	311375GS	1	BOLT
2	319926GS	1	PANEL-ACCESS
3	311377GS	1	COVER, Knob
4	-----	1	SCREW
5	705472	1	KNOB
6	-----	1	SCREW
7	319936GS	1	PLATE-TRIM
8	319925GS	1	COVER-SIDE
9	706057	1	PUMP-FUEL
10	-----	2	SCREW
11	311384GS	1	VALVE, Fuel
12	311385GS	1	SWITCH, ON/OFF
13	-----	1	COVER-SWITCH
14	-----	2	SCREW
15	707177	1	SCREW
16	705474	1	COVER-AIR CLEANER
17	705473	1	FILTER-A/C FOAM
18	705475	1	FILTER-A/C FOAM
19	705476	1	BASE-AIR CLEANER
20	317446GS	1	HOSE
21	317108GS	1	CHECK VALVE
22	317447GS	1	HOSE
23	311400GS	1	SCREW
24	-----	1	NUT
25	-----	1	SLEEVE
26	705477	1	COVER-AIR CLEANER
27	705939	1	GASKET-AIR CLEANER
28	705940	1	CARBURETOR
29	84003963	1	ROD-THROTTLE
30	84003964	1	SPRING
31	705944	1	BRACKET
32	-----	2	SCREW
33	-----	2	SCREW
34	705938	1	MOTOR-STEPPER
35	705941	1	COVER
36	705945	1	GASKET
37	705942	2	STUD
38	705495	1	INSULATOR
39	705496	1	GASKET
63	705491	1	DIPSTICK
64	705492	1	OIL SEAL
66	-----	1	DEFLECTOR
67	-----	2	BOLT-M6 x 12
68	-----	1	SEAL-RUBBER
107	-----	1	CRANKCASE
150	-----	1	DEFLECTOR
154	84006695	1	REGULATOR-VOLTAGE
155	-----	1	NUT
156	319924GS	1	COVER-SIDE
157	319928GS	1	COVER-SPARK PLUG
162	706065	1	HUBCAP

Main Unit (80098769p2)

Note: Unless noted otherwise, use the standard torque specifications

Mfg. No: 030808-00



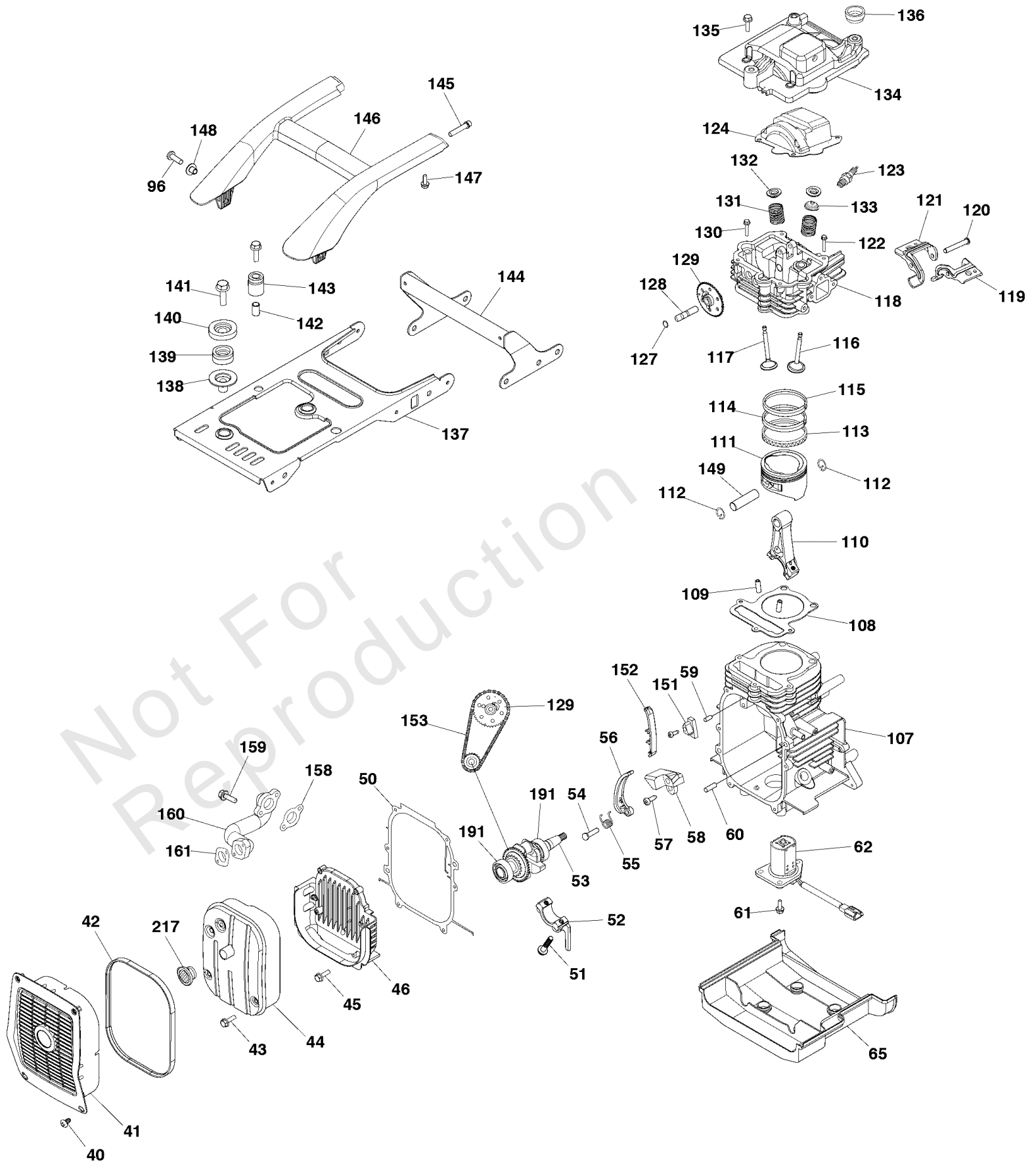
Main Unit (80098769p2)

REF NO	PART NO	QTY	DESCRIPTION
163	-----	2	BOLT-M6 x 25
164	319932GS	1	BAR
165	319934GS	1	BRACKET
166	319942GS	1	FRAME
167	-----	4	NUT-FLANGE M8
168	705469	2	MOUNT-VIBRATION
169	705494	1	AXLE
170	705946	2	BRACKET
171	705470	1	MOUNT-VIBRATION
172	771593	2	E-RING
173	705471	2	SLEEVE
174	-----	2	BOLT-M8 x 16
175	319938GS	1	HANDLE
176	319923GS	1	COVER-BOTTOM
177	311427GS	2	MOUNT, Vibration
178	319940GS	2	WHEEL
179	311426GS	1	MOUNT, Vibration
180	705483	1	HOSE
181	705484	1	HOSE
182	705487	1	SEPARATOR
183	705485	1	HOSE
184	705486	1	HOSE-FUEL
185	-----	2	CLAMP
186	705480	1	HOSE-FUEL
187	705481	1	HOSE-FUEL
188	-----	3	CLAMP
189	707178	1	HOSE-FUEL
190	707168	1	FILTER-FUEL TANK
218	84004995	1	DECAL
219	707169	1	DECAL
223	705967	1	DECAL
225	705978	1	DECAL
240	707463	1	DECAL
241	84006700	1	DECAL

Main Unit Engine (80098769p3)

Note: Unless noted otherwise, use the standard torque specifications

Mfg. No: 030808-00



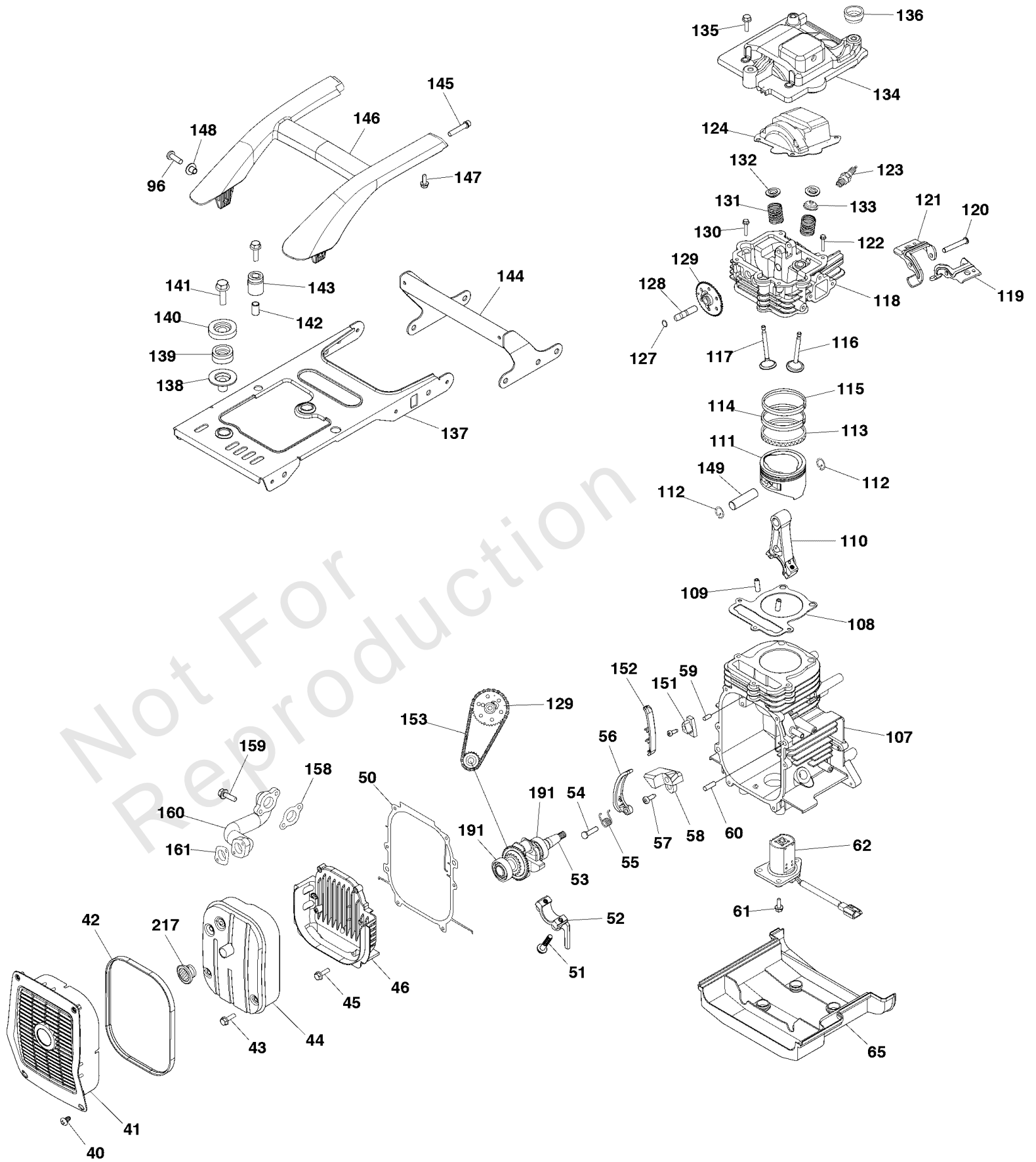
Main Unit Engine (80098769p3)

REF NO	PART NO	QTY	DESCRIPTION
40	-----	4	SCREW
41	319930GS	1	GUARD-MUFFLER
42	705962	1	GASKET
43	-----	2	BOLT-M6 x 75
44	-----	1	MUFFLER
45	-----	2	BOLT-M6 x 30
46	-----	1	COVER-CRANKCASE
50	705963	1	GASKET-CRANKCASE
51	-----	2	BOLT
52	-----	1	Cap-End
53	-----	1	CRANKSHAFT
54	-----	1	PIN
55	-----	1	SPRING
56	-----	1	ARM-TENSION
57	-----	1	SCREW
58	-----	1	BRACKET
59	-----	1	PIN
60	-----	1	PIN
61	-----	3	BOLT-M5 x 14
62	705964	1	SENSOR-OIL
65	-----	1	COVER
96	-----	2	SCREW
107	-----	1	CRANKCASE
108	-----	1	GASKET
109	-----	2	PIN
110	-----	1	ROD
111	-----	1	PISTON
112	-----	1	RETAINER-PIN
113	-----	1	RING
114	-----	1	RING
115	-----	1	RING
116	-----	1	VALVE-INTAKE
117	-----	1	VALVE-EXHAUST
118	-----	1	CYLINDER HEAD
119	-----	1	ARM-INTAKE VALVE
120	-----	1	PIN
121	-----	1	ARM-EXHAUST VALVE
122	-----	2	BOLT-M8 x 50
123	705455	1	SPARK PLUG
124	-----	1	BLOCK
127	-----	1	O-RING
128	-----	1	PIN-SHAFT
129	-----	1	CAM-ASSEMBLY
130	-----	2	BOLT-M8 x 70
131	-----	2	SPRING
132	-----	2	SEAT-VALVE
133	-----	2	SEAL-VALVE OIL
134	705456	1	COVER-CYLINDER
135	-----	4	BOLT-M6 x 25
136	-----	1	MOUNT-VIBRATION
137	319943GS	1	BRACKET

Main Unit Engine (80098769p3)

Note: Unless noted otherwise, use the standard torque specifications

Mfg. No: 030808-00



Main Unit Engine (80098769p3)

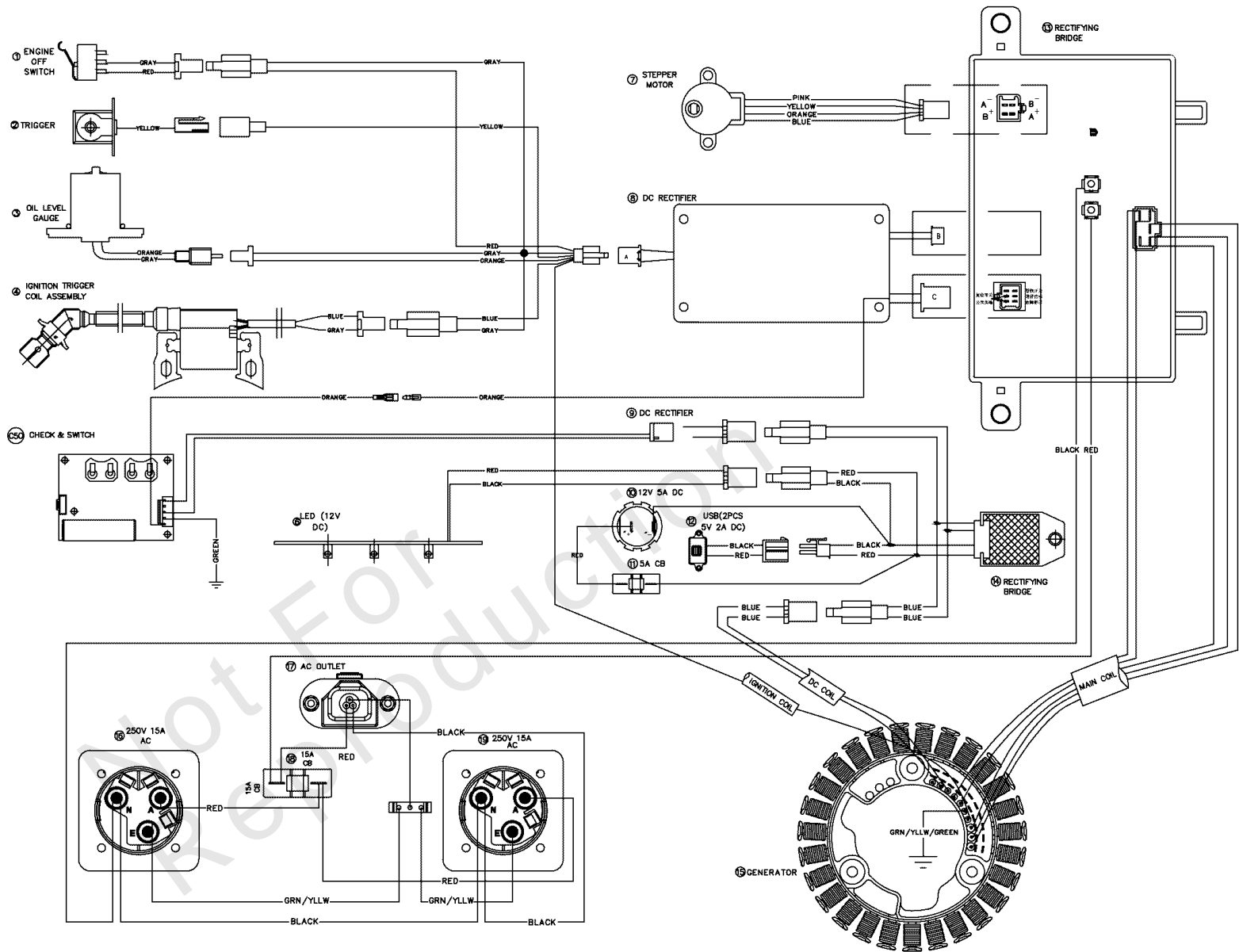
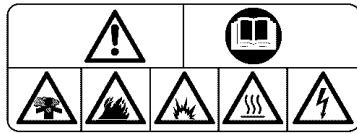
REF NO	PART NO	QTY	DESCRIPTION
138	-----	2	MOUNT-VIBRATION
139	-----	2	BUSHING
140	-----	2	GASKET
141	-----	2	BOLT-M8 x 30
142	-----	1	BUSHING
143	-----	1	MOUNT-VIBRATION
144	319935GS	1	BRACKET
145	-----	2	BOLT
146	319937GS	1	HANDLE
147	-----	2	SCREW
148	311431GS	2	BUSHING
149	-----	1	PIN-PISTON
151	-----	1	BRACKET
152	-----	1	BRACKET
153	-----	1	CHAIN
158	705966	1	GASKET
159	-----	2	BOLT-M6 x 20
160	-----	1	PIPE-MUFFLER
161	705468	1	GASKET
191	-----	1	BEARING
217	703189	1	ARRESTOR-SPARK

Not For Reproduction

Wiring Diagram (80098768WDS)

Note: Unless noted otherwise, use the standard torque specifications

Mfg. No: 030808-00



The technical requirements

1. P3400 series inverter;
2. Combine the electrical schematic to give the wiring diagram;
3. List basic information according to the requirements of single product parts;
4. Functional area description, clear requirements;
5. Use certified materials;
6. When the parts are inaccurate, please adjust to the accurate state in time.

Wiring Diagram (80098768WDS)

REF NO	PART NO	QTY	DESCRIPTION
--	-----		Wiring Diagram Only
--	-----		WARNING - Generator Voltage Could Cause Electrical Shock or Burn Resulting in Death Or Serious Injury. To Avoid Electrical Shock Or Burn Hazard, Please Refer Service To Qualified Personnel.

Not For Reproduction

Hardware Identification & Torque Specifications

Torque Specification Chart								
FOR STANDARD METRIC MACHINE HARDWARE (Tolerance ± 20%)								
Property Class	5.6		8.8		10.9		12.9	
	Class 5.6		Class 8.8		Class 10.9		Class 12.9	
Size Of Hardware	in/lbs	Nm.	in/lbs	Nm.	in/lbs	Nm.	in/lbs	Nm.
	ft/lbs		ft/lbs		ft/lbs		ft/lbs	
M3	5.88	.56	13.44	1.28	19.2	1.80	22.92	2.15
M4	13.44	1.28	30.72	2.90	43.44	4.10	52.56	4.95
M5	26.4	2.50	60.96	5.75	5.97	8.10	7.15	9.7
M6	44.64	4.3	7.3	9.9	10.3	14	12.1	16.5
M7	5.2	7.1	12.1	16.5	16.9	23	19.9	27
M8	7.7	10.5	17.7	24	25	34	29	40
M10	15	21	35	48	50	67	59	81
M12	26	36	61	83	86.2	117	103	140
M14	42	58	101	132	136	185	162	220
M16	64	88	147	200	210	285	250	340
M18	89	121	202	275	287	390	346	470
M20	126	171	290	390	405	550	486	660
M22	169	230	390	530	559	745	656	890
M24	217	295	497	375	708	960	840	1140
M27	320	435	733	995	1032	1400	1239	1680
M30	435	590	995	1350	1401	1900	1681	2280
M33	590	800	1349	1830	1902	2580	2278	3090
M36	759	1030	1740	2360	2441	3310	2935	3980
M39	988	1340	2249	3050	3163	4290	3798	5150

Torque Specification Chart						
FOR STANDARD MACHINE HARDWARE (Tolerance ± 20%)						
Hardware Grade	No Marks		SAE Grade 5		SAE Grade 8	
	SAE Grade 2		SAE Grade 5		SAE Grade 8	
Size Of Hardware	in/lbs	Nm.	in/lbs	Nm.	in/lbs	Nm.
	ft/lbs		ft/lbs		ft/lbs	
8-32	19	2.1	30	3.4	41	4.6
8-36	20	2.3	31	3.5	43	4.9
10-24	27	3.1	43	4.9	60	6.8
10-32	31	3.5	49	5.5	68	7.7
1/4-20	66	7.6	8	10.9	12	16.3
1/4-28	76	8.6	10	13.6	14	19.0
5/16-18	11	15.0	17	23.1	25	34.0
5/16-24	12	16.3	19	25.8	29	34.0
3/8-16	20	27.2	30	40.8	45	61.2
3/8-24	23	31.3	35	47.6	50	68.0
7/16-14	30	40.8	50	68.0	70	95.2
7/16-20	35	47.6	55	74.8	80	108.8
1/2-13	50	68.0	75	102.0	110	149.6
1/2-20	55	74.8	90	122.4	120	163.2
9/16-12	65	88.4	110	149.6	150	204.0
9/16-18	75	102.0	120	163.2	170	231.2
5/8-11	90	122.4	150	204.0	220	299.2
5/8-18	100	136	180	244.8	240	326.4
3/4-10	160	217.6	260	353.6	386	525.0
3/4-16	180	244.8	300	408.0	420	571.2
7/8-9	140	190.4	400	544.0	600	816.0
7/8-14	155	210.8	440	598.4	660	897.6
1-8	220	299.2	580	788.8	900	1,244.0
1-12	240	326.4	640	870.4	1,000	1,360.0

The guides and ruler furnished below are designed to help you select the appropriate hardware.



Nut, M8

Thread Diameter (mm)

Inside Diameter (in) Threads per inch

Nut, 1/2-16



Screw, M8- 1.25 x 25

Thread Diameter (mm) Distance between threads (mm) Body Length (mm)

Body Diameter Threads per inch Body Length (in)

Screw, 1/2- 16 x 2



Standard Hardware Sizing

When a washer or nut is identified as 1/2" (M8), this is the *Nominal size*, meaning the *inside diameter* is 1/2 inch (8mm metric thread diameter); if a second number is present it represents the *threads per inch* (distance between threads).

When bolt or capscrew is identified as 1/2 - 16 x 2" (M8 - 1.25 x 50), this means the *Nominal size*, or body diameter is 1/2 inch (8mm metric thread diameter), the second number, 16, represents the *threads per inch*, (*distance between threads*). The final number is the body length of the bolt or screw, 2 inches (50mm).

NOTES

- These torque values are to be used for all hardware excluding: locknuts, self-tapping screws, thread forming screws, sheet metal screws and socket head setscrews.
- Recommended seating torque values for locknuts:
 - for prevailing torque locknuts - use 65% of grade 5 torques.
 - for flange whizlock nuts and screws - use 135% of grade 5 torques.
- Unless otherwise noted on assembly drawings, all torque values must meet this specification.

Common Hardware Types

Hex Head Capscrew



Washer



Carriage Bolt



Hex Nut

Wrench & Fastener Size Guide

1/4" Bolt or Nut Wrench—7/16"	5/16" Bolt or Nut Wrench—1/2"	3/8" Bolt or Nut Wrench—9/16"	7/16" Bolt or Nut Wrench (Bolt)—5/8" Wrench (Nut)—11/16"	1/2" Bolt or Nut Wrench—3/4"
M6 Bolt or Nut Wrench—10mm	M8 Bolt or Nut Wrench—13mm	M10 Bolt or Nut Wrench—17mm	M12 Bolt or Nut Wrench—19mm	M14 Bolt or Nut Wrench—22mm

