

Masport®

ROTARY MOWERS

SERIES 21

Part Number
564929

Model
Contractor ST SP 3'n1

Engine
B&S Series 850

Month and Year of First Manufacture - Oct 2016
Starting Serial Number - 8077773

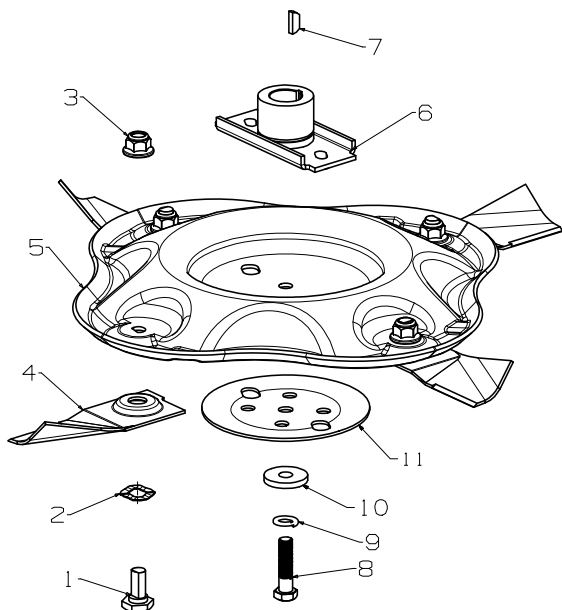


Issue F.2
ECN 04057
Oct 2019 PB
REF # 764929S



S21 Contractor ST SP 3'n1

540mm Disc Blade Wavy- Assembly

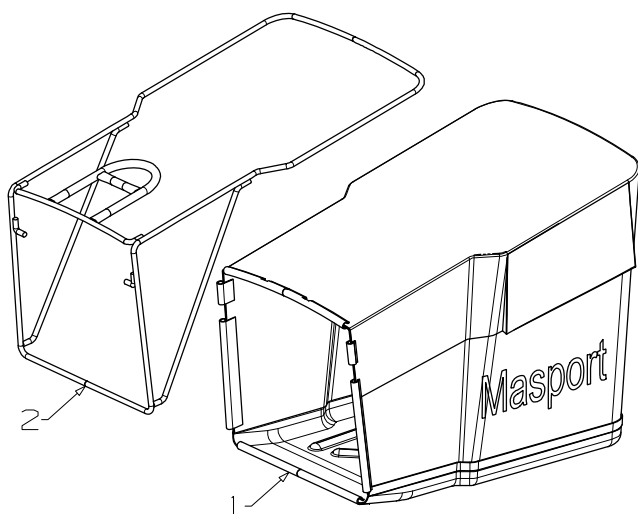


Item No	Part No	Description	Qty Req'd
1	581707	Bolt- Pivot M10 x 22	4
2	580693	Washer, Wavy 13.4 x 24.2	4
3	503672	Nut, M10 Hex Nyloc Flange	4
4	579749	Blade- Quick Cut, 540mm	4
5	783314	KIT-Disc Blade Wavy (Includes items: 8, 9, 10, 11)	1
6	031640	Driver Assy-Blade - 25mm	1
7	503363	Key- Woodruff 5/8"x3/16"x1/4"	1
8	503543	Bolt; Hex NF 3/8" x 1.5 NYG8	1
9	500204	Washer, Spring 3/8"	1
10	503855	Washer, Flat 9.75 x 30 x 4.0	1
11	567332	Plate- Stiffener, Disc Blade Assy	1

Blade & Bolt Sets

- 783692 **Bolt Set (4)**
Includes Items: 1, 2, 3
- 767390 **Blade-Quick Cut (4) 540mm**
Includes Items: 1, 2, 3, 4
- 773251 **Disc Assy- Wavy (4 Blade) 540mm**
Includes Items: 1, 2, 3, 4, 5, 8, 9, 10, 11

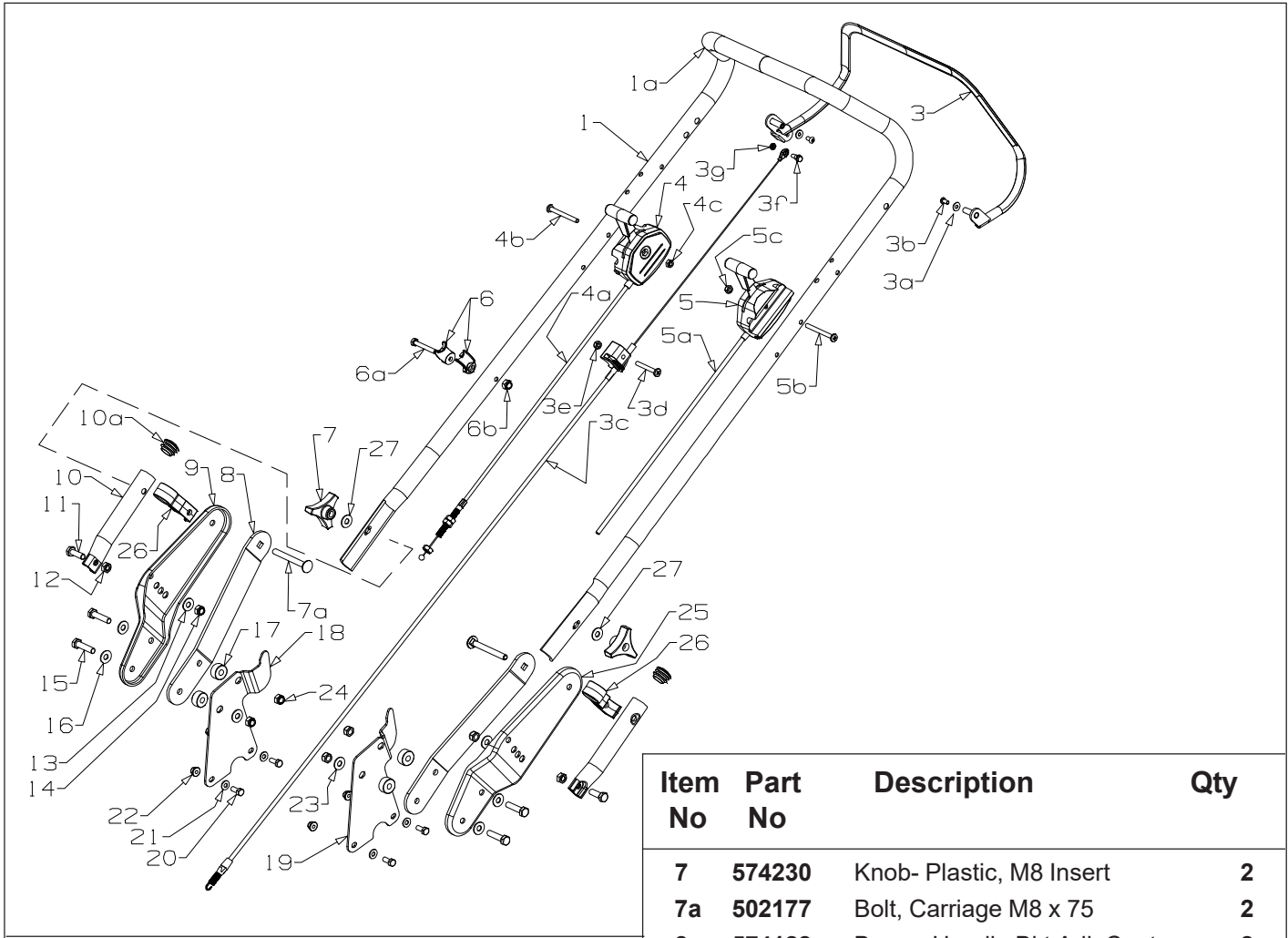
774827 Catcher Assembly - Bag, Contractor 21" (Includes items 1 & 2)



Item	Part No	Description	Qty
1	574827	Bag Assy- Contr, 21" R NZ	1
2	574482	Frame Assy- Contractor	1



S21 Contractor ST SP 3'n1

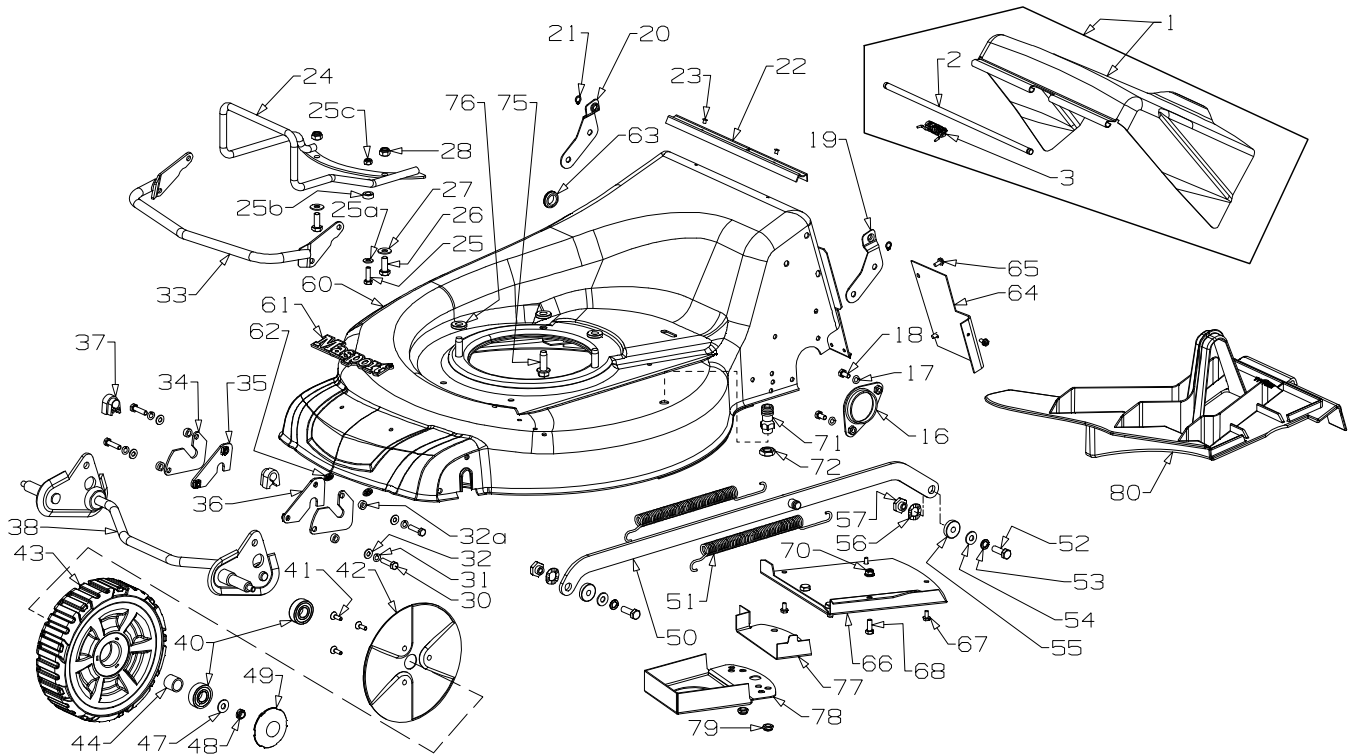


Item No	Part No	Description	Qty
7	574230	Knob- Plastic, M8 Insert	2
7a	502177	Bolt, Carriage M8 x 75	2
8	574128	Brace- Handle Bkt Adj, Contr	2
9	964082	Bracket- Handle Adjustable, RH	1
10	974129	Handle- Lower, Stub S21 Stl Blk	2
10a	572270	Plug- 25.4mm Black Plastic	2
11	501598	Screw, Set M8 x 25	2
12	501602	Nut, M8 Hex	2
13	501606	Washer, Flat 8 x 19 x 1.6	2
14	501793	Nut, M8 Hex Nyloc x 8mm thick	2
15	501685	Screw, Set M8 x 30 Hex	4
16	501606	Washer, Flat 8 x 19 x 1.6	4
17	574134	Spacer- Pulley, 8.5 x 19 x 4	4
18	574140	Bracket- Catcher Mount, RH	1
19	574139	Bracket- Catcher Mount, LH	1
20	501702	Screw, Set M6 x 16 Hex	4
21	501703	Washer, Flat 6 x 14 x 1.2	4
22	503973	Nut, M6 Hex Nyloc Flanged	4
23	501606	Washer, Flat 8 x 19 x 1.6	2
24	501793	Nut, M8 Hex Nyloc x 8mm thick	4
25	964083	Bracket- Handle Adjustable, LH	1
26	572447	Retainer- Clutch Cable, Contr	2
27	501606	Washer, Flat 8 x 19 x 1.6	2
1/1a	764088	Handle & Sleeve, Contr SFT/BLK	1
3	764336	Bail Arm Assy, SP RH	1
3a	500848	*Washer, Flat 3/16" x 0.5 x .039	2
3b	502115	*Screw, Set M5 x 10 Btn/Hd	2
3c	564339	Cable-Clutch,ThumbWheel G/Box	1
3d	502181	Screw, Pan M6 x 50	1
3e	501764	Nut, M6 Hex Nyloc x 6mm thick	1
3f	502237	Bolt, M5 Hex Fl/Hd Shouldered	1
3g	502238	Nut, M5 Hex Nyloc x 5mm thick	1
4/4a	765392	Cable- SPV CON/Adj & Ctrl Assy	1
(This mower from S/N 8341000 introduced spares item 765392)			
4	574272	*Control- Speed x 3 SP UPT HNDL	1
4b	502198	*Screw, Pan M6 x 60	1
4c	501764	*Nut, M6 Hex Nyloc x 6mm thick	1
5/5a	583460	Throttle Ctrl & Cable CH "T"	1
5b	502198	*Screw, Pan M6 x 60	1
5c	501764	*Nut, M6 Hex Nyloc x 6mm thick	1
6	782546	Comfort Start Kit	1
6a	503558	*Screw, Set M6 x 45	1
6b	501764	*Nut, M6 Hex Nyloc x 6mm thick	1

When ordering spares: PLEASE QUOTE PART NUMBER & Description, NOT Illustrated Number. Item Qty = 1 per part unless stated differently.
Bold Text = Assemblies. Text starting with * = Items included in the Assemblies & may not be available as a spares item.
 Determine the left hand or right hand sides by standing in the operating position (standing at the handle). Page 3



S21 Contractor ST SP 3'n1

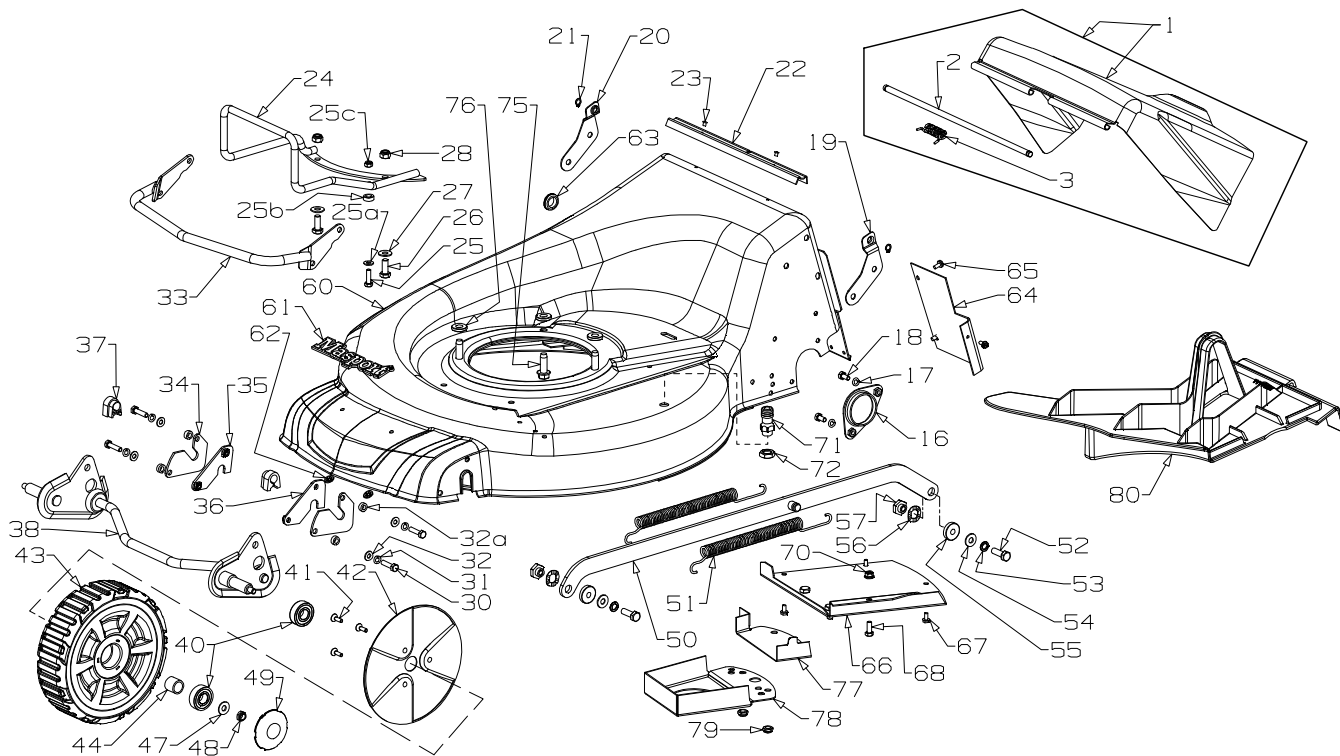


Item No	Part No	Description	Qty	Item No	Part No	Description	Qty
1	764454	Flap Assy- Steel, Contractor	1	34	574120	Plate- Retainer, Axle Front/Inner	2
2	764480	*Wire- Flap Pivot 325 x 8 CCL	1	35	574122	Plate- Retainer, Axle Front/RH	1
3	579213	*Spring- Flap, 19" Stl	1	36	574121	Plate- Retainer, Axle Front/LH	1
16	581178	Retainer-Axle, Rear	2	37	580030	Bush- Pivot, Axle	2
17	500201	Washer, Spg 6	4	38	565150	Axle Assy- Front, Contr 21" LC	1
18	501959	Screw, Set M6 x 12 Hex	4	Note, Axle Assy-Front has been replaced from S/N 8250000			
19	579209	Bracket - Flap, LH 19"	1	To supersede to the new Axle Assy, you will require part:			
20	579210	Bracket - Flap, RH 19"	1	765150 Axle Assy- Front, Contr Kit 21" LC			
21	502219	Circlip, 08 Ext DIN 471	2	This assy contains full instructions including parts 32a,37,38			
22	579211	Seal- Flap, Dust	1	40	567564	Bearing- Wheel, 6202-2RS	4
23	581369	Rivet Pop 4.0 x 3.2 73SS5-2	2	41	502267	Screw, Csk M5 x 12 Allen Head	6
24	974518	Guard- Bumper, Assy	1	42	574426	Cover- Inner Wheel, Front	2
25	501600	Screw, Set M6 x 20 Hex	1	43	764670	Wheel Assy- 200 x 58mm	2
25a	501703	Washer, Flat 6 x 14 x 1.2	1	(Includes 1 x 564039 & 2 x 567564 per wheel)			
25b	569334	Spacer- Wear Plate 19" x 6mm	1	44	564039	Spacer- Wheel O/D19 x 18L	2
25c	501764	Nut, M6 Hex Nyloc x 6mm thick	1	47	501606	Washer, Flat 8 x 19 x 1.6	2
26	502106	Screw, Set M8 x 16 Hex	2	48	503831	Nut, M8 Hex Nyloc x 6mm thick	2
27	501606	Washer, Flat 8 x 19 x 1.6	2	49	567637	Hub- Cap, Contractor	2
28	501793	Nut, M8 Hex Nyloc x 8mm thick	2	50	565153	Rod- Connecting, 21" LC Cntr	1
30	501963	Screw, Set M6 x 25	4	This mower with serial numbers 8077773 ~ 8248537 used			
31	500201	Washer, Spg 6	4	574105	Rod- Connecting, 21" LS Cntr	1	
32	501703	Washer, Flat 6 x 14 x 1.2	4	51	569035	Spring- Counter Balance	2
32a	565269	Spacer- Axle Contr 5 x 7 x 12	4	52	501598	Screw, Set M8 x 25 Hex	2
33	974110	Guard- Bumper, Assy	1	53	503747	Washer, SPG 8	2

When ordering spares: PLEASE QUOTE PART NUMBER & Description, NOT Illustrated Number. Item Qty = 1 per part unless stated differently.
Bold Text = Assemblies. Text starting with * = Items included in the Assemblies & may not be available as a spares item.
 Determine the left hand or right hand sides by standing in the operating position (standing at the handle).



S21 Contractor ST SP 3'in1



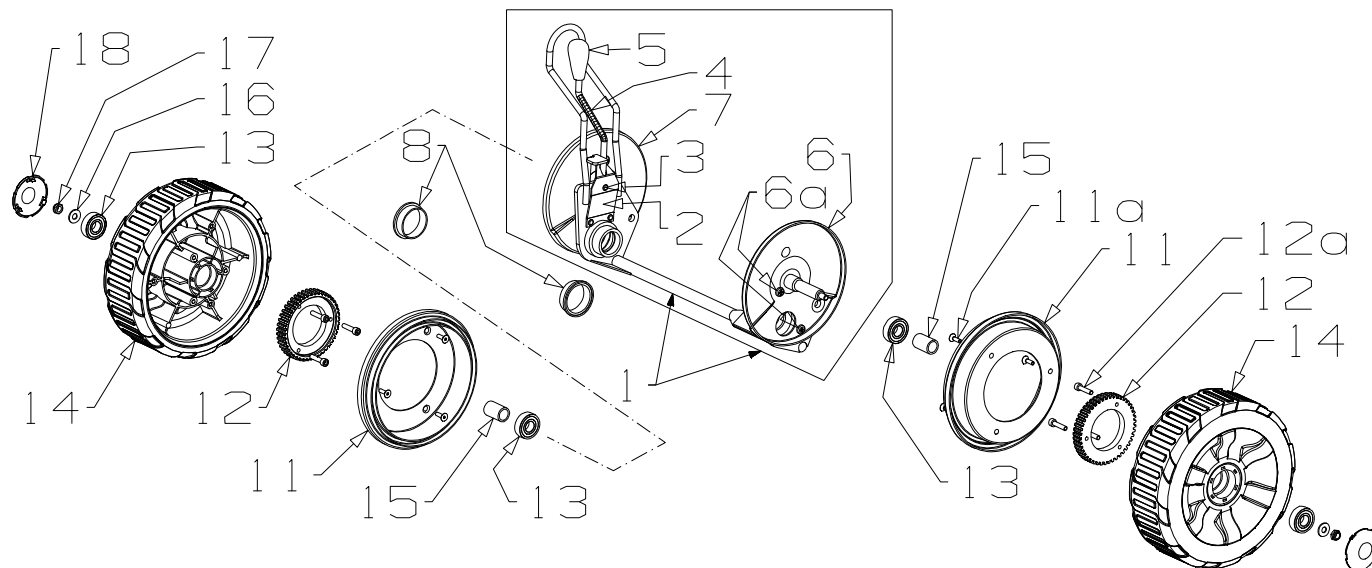
Item No	Part No	Description	Qty	Item No	Part No	Description	Qty
54	501606	Washer, Flat 8 x 19 x 1.6	2	68	501702	Screw, Set M6 x 16 Hex	1
55	583448	Spacer	2	70	503973	Nut, M6 Hex Nyloc Flanged	1
56	580693	Washer, Wavy 13.4x24.2x .51	2	71	503783	Cyclowash- Fitting	1
57	574208	Nut- Pivot, Con-Rod	2	72	596547	Nut; BSP 1/4" Hex	1
60	774091	HSG-StIT 21" XFQ SPV M/VPR	1	(This mower from S/Number 8341000 items 71/72 added)			
61	581240	*Nameplate- MASPORT	1	75	580453	Screw,S/T 3/8x1-1/8 UNC TRIBLK	3
62	503150	*Clip- Starlock, 5 dia	2	76	503419	Washer, Flat 10 x 23 x 3.0	3
63	502179	*Grommet- Clutch Cable,20x16x6	1	77	567413	Cover- Belt, SPV Ext Syncro	1
64	574249	*Tunnel- G/Box Cover 21" Stl	1	78	567412	Cover- Belt, SPV 21" Syncro	1
65	503630	*Screw, S/T 10x.4 Typ B	3	79	503831	Nut, M8 Hex Nyloc x 6mm thick	2
66	964018	Cover- Belt, 21" ST Syncro	1	80	773389	Insert- Mulching, 21" Assy	1
67	503630	Screw, S/T 10x.4 Typ B	3				

NOT ILLUSTRATED

503054	Tie- Nylon Cable, Black	4
569297	Decal, Date	1
573045	Decal, Noise S21 W/C 98db	1
573198	Decal, HSG "Self Propelled"	1
574263	Decal, Hsg S19/S21 Contractor	1
580778	Stop- Rope	1
582241	Decal, Flap Caution 5T	1
582062	Decal, Height Combo	1
583152	Owner Manual	1

Items below are placed into the Owner's Manual Bag

574634	Instruct, Handle Knob Replace	1
502274	Bolt, Carriage M8 x 55	2
503747	Washer, SPG 8	2
501606	Washer, Flat 8 x 19 x 1.6	3
503526	Nut, M6 Dome	2

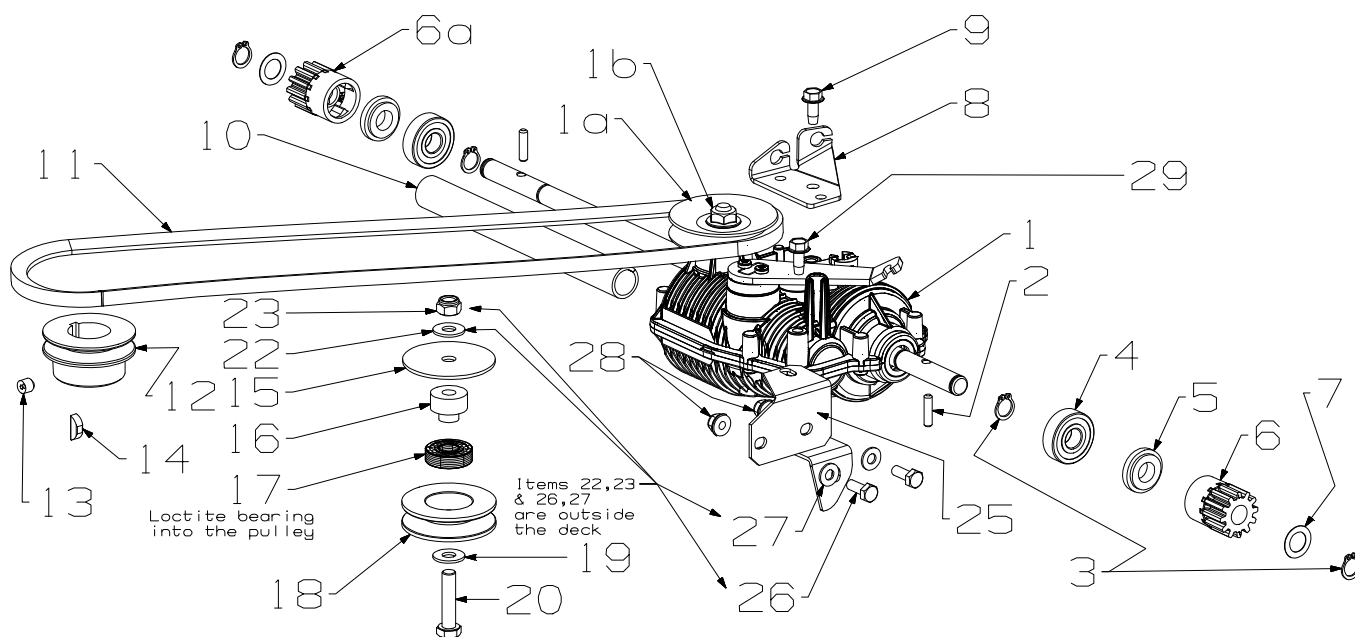


Note, Axle Assy-Rear has been replaced from Serial Number 8250000
To replace or supersede to the new Rear Axle Assy, you will require:
765271 Axle Assy- Rear SP, Contr Kit LC
This assembly contains full instructions along with item 1, 6, 6a & 7

Item No	Part No	Description	Qty	Item No	Part No	Description	Qty
1	765267	Axle Assy- Rear, SP Contr V2	1	11	567612	Seal- Wheel, Contr	2
2	580649	*Spring- Leaf	1	11a	502267	Screw, C/Sink M5 x 12 Allen Hd	6
3	503373	*Rivet- Flat Head 3/16" x 27/64"	3	12	571272	Gear- Driving, Contr 45 teeth	2
4	574235	*Rod- Height Select, LC Contr	1	12a	503962	Screw, Cap M6 x 25	6
5	581729	*Knob- Height Lever, Adj	1	13	567564	Bearing- Wheel, 6202-2RS	4
6	565262	Cover- Dust, LH Contr V2	1	14	767559	Wheel Assy, 235 x 75 contr	2
6a	503591	Screw, Pan M6 x 12	4			(Includes 2 x 567564 & 1 x 567639 per wheel)	
7	565263	Cover- Dust, RH Contr V2	1	15	567639	Spacer- Wheel, Length 30mm	2
8	580091	Bush- Pivot, Rear Axle	2	16	501606	Washer, Flat 8 x 19 x 1.6	2
				17	503831	Nut, M8 Hex Nyloc x 6mm thick	2
				18	567637	Hub Cap, Contr	2



S21 Contractor ST SP 3'in1



Note, For this mower, Serial Numbers 8077773 ~ 8208494 the gearbox 564087 and 2 x pawls 581092 have been replaced by the gearbox as shown above and items 1 & 2 below.

For a replacement gearbox use:
774787 Gearbox Assy-3SP MG512 PIN 21"
(Includes 2 x 574788)

Item No	Part No	Description	Qty	Item No	Part No	Description	Qty
1	774787	Gearbox- 3 Speed, MG512 PIN 21"	1	13	503386	Screw, Grub M8 x 8	1
1a	565391	*Pulley- (Half) GBX, GT Part # 33136	2	14	503363	Key, Woodruff 5/8 x 3/16 x 1/4	1
1b	502310	*Nut, Locking GT Part No 42811	1	15	502290	Washer, Flat 8 x 55 x 2.0	1
2	574788	*Pin- Drive, Non Broach 3SP G/Box	2	16	574273	Spacer- Idler, SPV M8	1
3	503759	Circlip, 12 EXT DIN 471	4	17	503901	Bearing- Ball, 12x28x8 6001-2RSH	1
4	501213	Bearing, 12x32x10 6201 2RS	2	18	573383	Pulley- V, Idler	1
5	581093	Cap, Pinion 950 SP Plastic	2	19	501606	Washer, Flat 8 x 19 x 1.6	1
6	569178	Pinion, LH 12 Teeth	1	20	501716	Screw, Set M8 x 35 Hex	1
6a	569179	Pinion, RH 12 Teeth	1	22	501606	Washer, Flat 8 x 19 x 1.6	1
7	503102	Washer, Flat 12 x 20 x 0.4	2	23	501793	Nut, M8 Hex Nyloc x 8mm thick	1
8	564249	Bracket- Cable Mount	1	25	567557	Bracket- G/Box Mount, Contr	1
9	501599	Screw; S/Tapping 1/4" x 5/8"	1	26	501702	Screw, Set M6 x 16 Hex	2
10	574319	Sleeve, Rear Axle 3 Speed	1	27	501703	Washer, Flat 6 x 14 x 1.2	2
11	564358	Belt-V TR-PWRV10x875 Gat Notch	1	28	503973	Nut, M6 Nyloc Flange	2
12	574237	Pulley- Eng 25b x 55d x 28h	1	29	501599	Screw; S/Tapping 1/4" x 5/8"	1