



# Parts Manual

Mfg. No: 2691596-00  
19" Alloy Push Mower 850



---

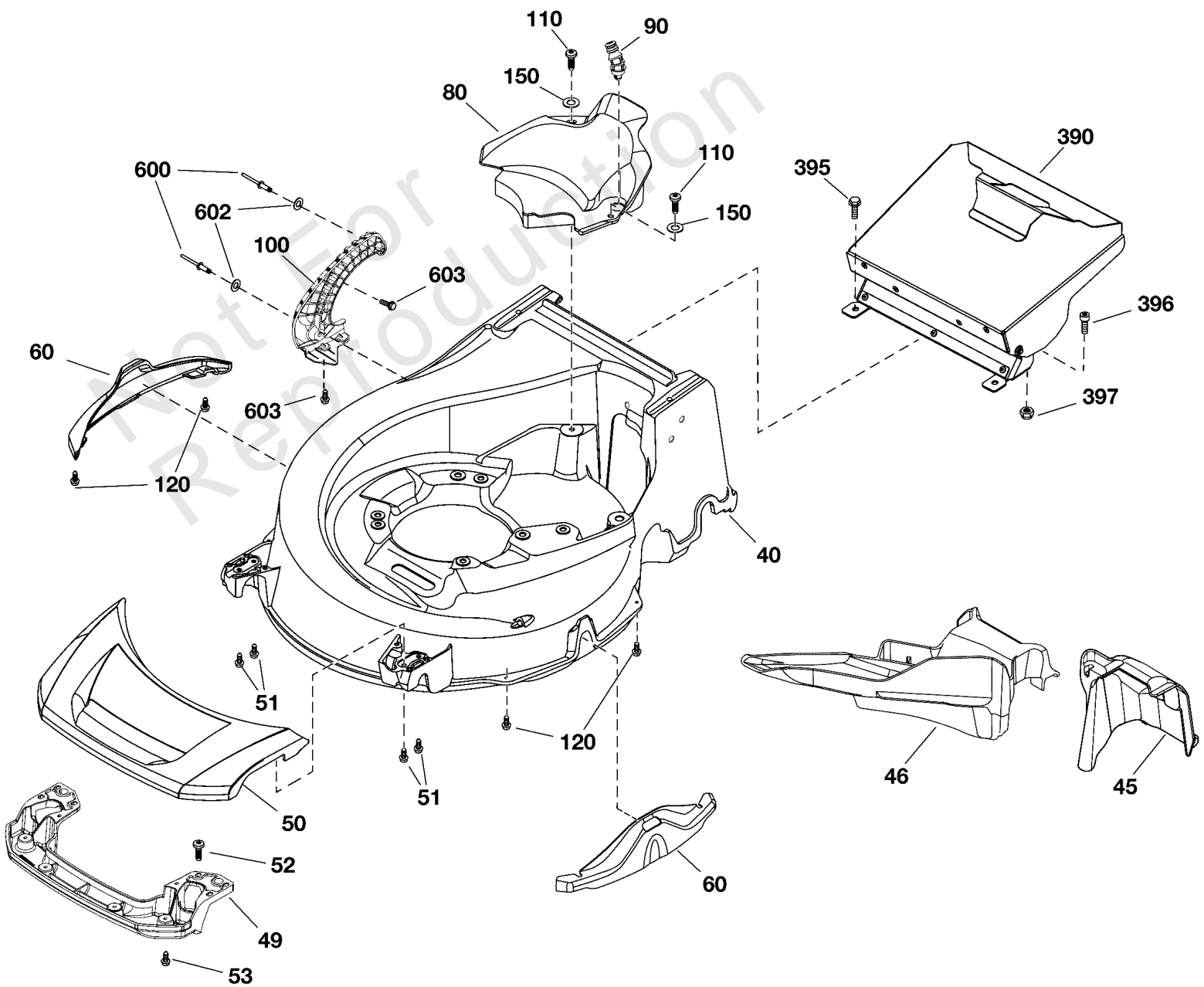
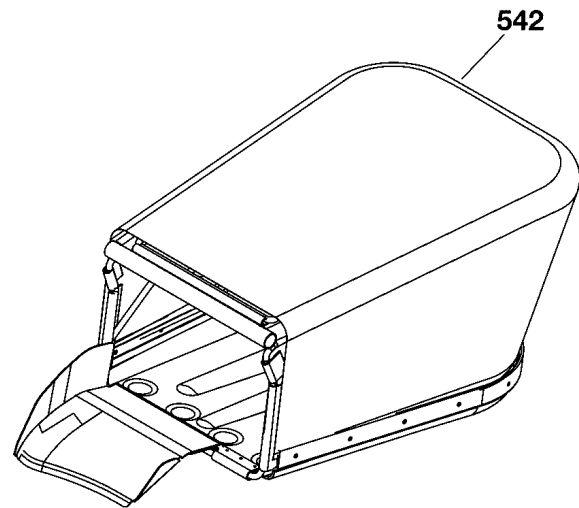
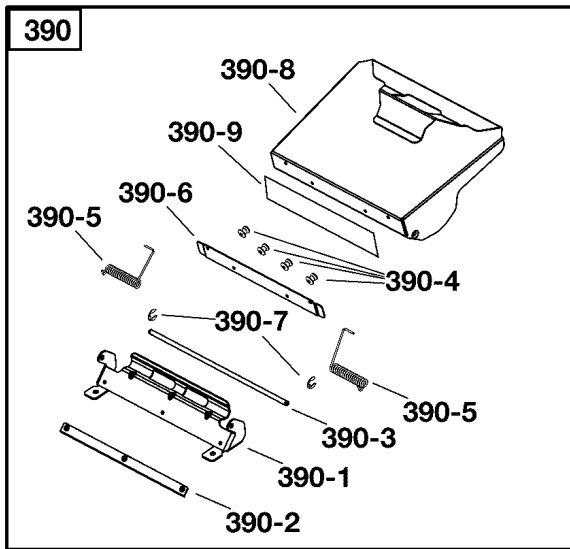
<b>Model Components</b>	<b>Page</b>
Deck & Catcher Group.....	4
Engine & Blade Group.....	6
Handles & Controls.....	8
Wheels & Axles Group.....	10
Torque Specification Chart.....	12

Not For  
Reproduction

# Deck & Catcher Group

Note: Unless noted otherwise, use the standard torque specifications

Mfg. No: 2691596-00



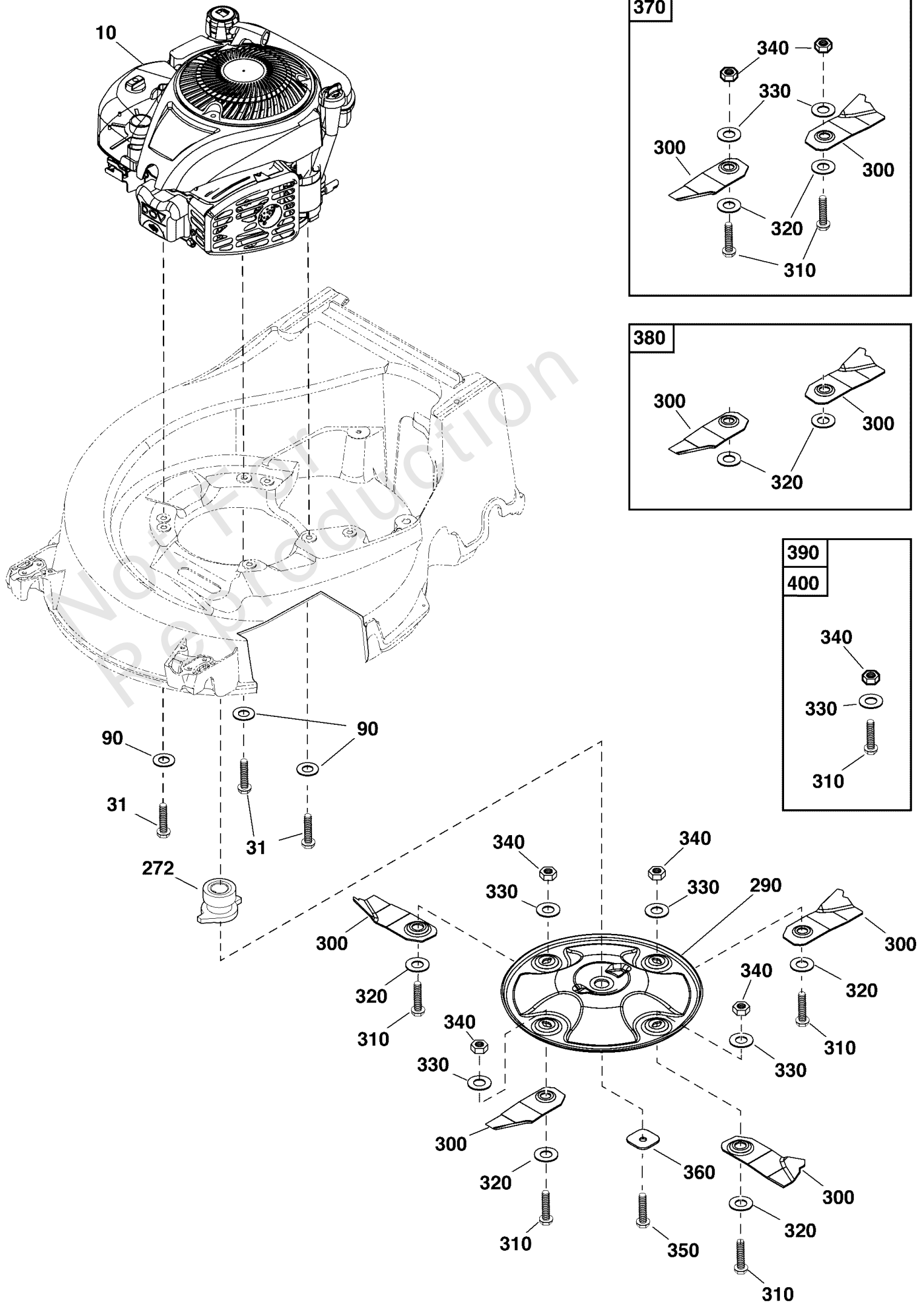
## Deck & Catcher Group

REF NO	PART NO	QTY	DESCRIPTION
40	CH87102EL	1	BASEPLATE, Commercial, Silver Hammertone
45	CH87433G	1	COVER, Chute
46	CH87203A	1	MULCH PLUG, Silver
49	CH87113A	1	BUMPER, Front
50	CH87115A	1	DECK TRIM, Front
51	-----	4	SCREW -(Not a serviceable part)
52	-----	2	SCREW, Pan Torx, ST4.8 x 16 -(Not a serviceable part)
53	-----	8	SCREW, Mush Head, 8 x 5/8 -(Not a serviceable part)
60	CH87147A	2	TRIM, Side, Steel, Black
60	CH87118G	2	TRIM, Side, Black -(Optional)
80	CH87108GD	1	COVER, Deck, Black
90	HA28024A	1	WASHOUT PORT
100	CH87154G	1	SEGMENT
110	-----	2	SCREW, Pan Torx, Trilobe, M6 x 19 -(Not a serviceable part)
120	-----	4	SCREW, Pan Torx Self Tap, ST4.2 x 16 -(Not a serviceable part)
150	-----	2	WASHER, 6.4 x 16 x 2 -(Not a serviceable part)
390	CH87405A	1	REAR FLAP ASSEMBLY -(Includes Ref. Nos. 0390-1 through 0390-8)
390-1	-----	1	BRACKET, Rear Flap -(Not a serviceable part)
390-2	-----	1	PLATE, Seal End Clamping -(Not a serviceable part)
390-3	-----	1	ROD, Flap -(Not a serviceable part)
390-4	-----	13	RIVET -(Not a serviceable part)
390-5	-----	2	SPRING -(Not a serviceable part)
390-6	-----	1	PLATE, Seal Inner Clamping -(Not a serviceable part)
390-7	-----	2	CIRCLIP -(Not a serviceable part)
390-8	-----	1	FLAP, Rear -(Not a serviceable part)
390-9	-----	1	SEAL, Rear Flap -(Not a serviceable part)
395	-----	2	BOLT, M8 x 25 -(Not a serviceable part)
396	-----	2	BOLT, Torx, M5 x 16 -(Not a serviceable part)
397	-----	2	NUT, Nylock, M5 -(Not a serviceable part)
542	GC12014A	1	CATCHER ASSEMBLY
600	-----	2	RIVET -(Not a serviceable part)
602	-----	2	WASHER, 5.3 x 12 x 1 -(Not a serviceable part)
603	-----	2	SCREW, 4.8 x 12 -(Not a serviceable part)

# Engine & Blade Group

Note: Unless noted otherwise, use the standard torque specifications

Mfg. No: 2691596-00



## Engine & Blade Group

REF NO	PART NO	QTY	DESCRIPTION
10	123P32-0031-H5	1	** ENGINE, Briggs & Stratton 850 Series
31	HA21320D	3	BOLT, Taptite, HW, 3/8 UNC x 30
90	HA22277D	3	WASHER, 3/8
272	EE14861A	1	SLEEVE, Engine
290	CA09524D	1	BLADE DISC, Low Inertia
300	-----	4	BLADE, Low Profile -(Not a serviceable part)
310	-----	4	BOLT, Blade -(Not a serviceable part)
320	CA09347A	4	WASHER, Blade Tension
330	HA25276BZ	4	WASHER, Belleville
340	CA09241D	4	NUT, Nylock, 3/8 UNC
350	EE14484B	1	BOLT, Flanged, Blade Disc
360	EN73054B	1	WASHER, Blade Disc
370	CA09470B	1	KIT, Blade & Bolt, Bulk Pack (1 Pack) -(Includes Ref. Nos. 300, 310, 320, 330 & 340)
380	CA09470P	1	BLADE KIT, BULK PACK (40 PAIRS) -(Includes Ref. Nos. 300 & 320)
390	CA09277S	1	KIT, Hardware, Bolt, Washer, Nut (1 Pack) -(Includes Ref. Nos. 310, 330 & 340)
400	CA09277P	1	KIT, Hardware, Blade, Washer, Nut , Bulk Pack (50 Pairs) -(Includes Ref. Nos. 310, 330 & 340)

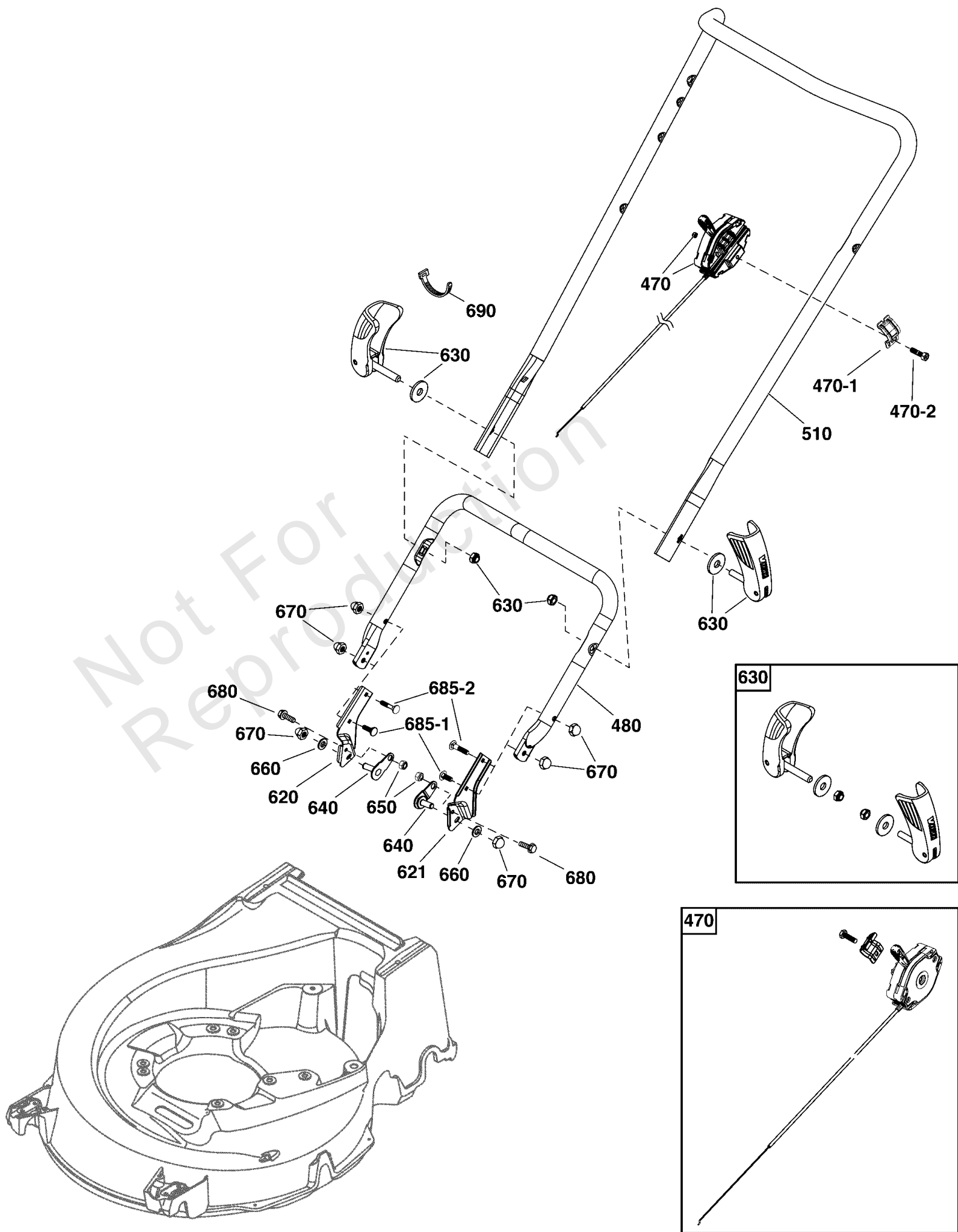
### Footnotes:

Note\*\* Engine Style may vary from illustration. To verify your specific engine model, please reference the ID Tag located on your engine. See your local Briggs & Stratton distributor for parts and service.

# Handles & Controls

Note: Unless noted otherwise, use the standard torque specifications

Mfg. No: 2691596-00





## Handles & Controls

REF NO	PART NO	QTY	DESCRIPTION
470	80083572	1	THROTTLE CONTROL, No Choke 830mm - 25mm Clamp
470-1	TC05004A	1	CLAMP, 25MM -(Included with Ref. No. 470)
470-2	HA27291A	1	SCREW, M5 x 18 -(Included with Ref. No. 470)
480	80080136	1	HANDLE, Lower
510	80082445	1	HANDLE, Upper
620	80082442	1	HANDLE MOUNT, Right, Black
621	80082440	1	HANDLE MOUNT, Left, Black
630	CH86781P	1	WINGED LOCKING LEVER PACK -(2 sets included)
640	CH87524D	2	BOLT, Saddle
650	-----	2	NUT, Nylock, M8 -(Not a serviceable part)
660	-----	2	WASHER, Flat, 8 x 17 x 2 -(Not a serviceable part)
670	HA28144D	6	NUT, Dome
680	HA21585D	2	BOLT, Hex Shoulder
685-1	-----	2	COACH BOLT, M8*20 -(Not a serviceable part)
685-2	-----	2	COACH BOLT, M8*40 -(Not a serviceable part)
690	-----	1	* CABLE TIE -(Not a serviceable part)

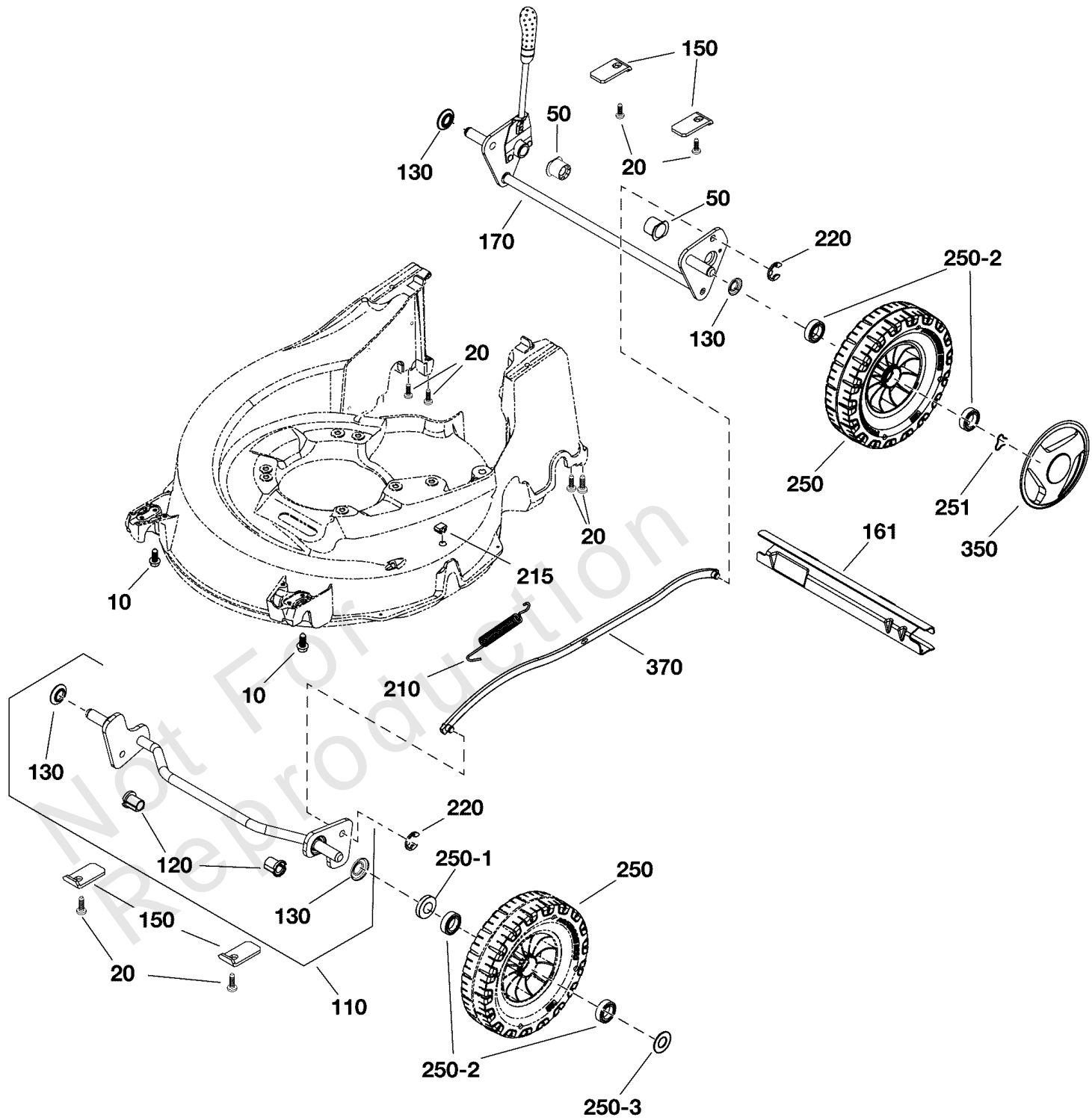
### Footnotes:

Note:\* Items without part numbers are common fasteners and are available at your local hardware store.

# Wheels & Axles Group

Note: Unless noted otherwise, use the standard torque specifications

Mfg. No: 2691596-00



## Wheels & Axles Group

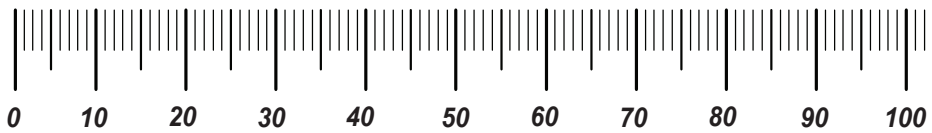
REF NO	PART NO	QTY	DESCRIPTION
10	-----	4	SCREW, Hex Flange, M5 x 16 -(Not a serviceable part)
20	-----	6	SCREW, Pan Torx Trilobe, M6 x 19 -(Not a serviceable part)
50	CH84185U	2	BUSHING, Rear Axle
110	CH88438A	1	AXLE, Front -(Includes Ref. Nos. 120 & 130)
120	CH86276A	2	BUSHING, Front Axle
130	CH81445A	4	DUST SEAL
150	CH88275D	4	RETAINING PLATE, Axle
161	CH87381D	1	BRACKET
170	CH88443A	1	AXLE, Rear -(Includes Ref. Nos. 130)
210	CH88451AW	1	SPRING
215	HA28127A	1	PLUG
220	HA25131D	2	E-CLIP
250	CH86334A	4	WHEEL, Pro, 8"
250-1	-----	2	WASHER, Wheel, Front -(Not a serviceable part)
250-2	HA25839A	8	BEARING, Wheel, 14.1 x 28.0mm 8 off
250-3	-----	2	WASHER, Wheel, Front -(Not a serviceable part)
251	CH86298A	4	CAPTIVATED CLIP, Wheel
350	CH86112A	4	HUBCAP, Black
370	CH88423A	1	CONNECTING LINK

# Hardware Identification & Torque Specifications

Torque Specification Chart								
FOR STANDARD METRIC MACHINE HARDWARE (Tolerance ± 20%)								
Property Class	5.6		8.8		10.9		12.9	
	Class 5.6		Class 8.8		Class 10.9		Class 12.9	
Size Of Hardware	in/lbs	Nm.	in/lbs	Nm.	in/lbs	Nm.	in/lbs	Nm.
	ft/lbs		ft/lbs		ft/lbs		ft/lbs	
M3	5.88	.56	13.44	1.28	19.2	1.80	22.92	2.15
M4	13.44	1.28	30.72	2.90	43.44	4.10	52.56	4.95
M5	26.4	2.50	60.96	5.75	5.97	8.10	7.15	9.7
M6	44.64	4.3	7.3	9.9	10.3	14	12.1	16.5
M7	5.2	7.1	12.1	16.5	16.9	23	19.9	27
M8	7.7	10.5	17.7	24	25	34	29	40
M10	15	21	35	48	50	67	59	81
M12	26	36	61	83	86.2	117	103	140
M14	42	58	101	132	136	185	162	220
M16	64	88	147	200	210	285	250	340
M18	89	121	202	275	287	390	346	470
M20	126	171	290	390	405	550	486	660
M22	169	230	390	530	559	745	656	890
M24	217	295	497	375	708	960	840	1140
M27	320	435	733	995	1032	1400	1239	1680
M30	435	590	995	1350	1401	1900	1681	2280
M33	590	800	1349	1830	1902	2580	2278	3090
M36	759	1030	1740	2360	2441	3310	2935	3980
M39	988	1340	2249	3050	3163	4290	3798	5150

Torque Specification Chart						
FOR STANDARD MACHINE HARDWARE (Tolerance ± 20%)						
Hardware Grade	No Marks		SAE Grade 5		SAE Grade 8	
	SAE Grade 2		SAE Grade 5		SAE Grade 8	
Size Of Hardware	in/lbs	Nm.	in/lbs	Nm.	in/lbs	Nm.
	ft/lbs		ft/lbs		ft/lbs	
8-32	19	2.1	30	3.4	41	4.6
8-36	20	2.3	31	3.5	43	4.9
10-24	27	3.1	43	4.9	60	6.8
10-32	31	3.5	49	5.5	68	7.7
1/4-20	66	7.6	8	10.9	12	16.3
1/4-28	76	8.6	10	13.6	14	19.0
5/16-18	11	15.0	17	23.1	25	34.0
5/16-24	12	16.3	19	25.8	29	34.0
3/8-16	20	27.2	30	40.8	45	61.2
3/8-24	23	31.3	35	47.6	50	68.0
7/16-14	30	40.8	50	68.0	70	95.2
7/16-20	35	47.6	55	74.8	80	108.8
1/2-13	50	68.0	75	102.0	110	149.6
1/2-20	55	74.8	90	122.4	120	163.2
9/16-12	65	88.4	110	149.6	150	204.0
9/16-18	75	102.0	120	163.2	170	231.2
5/8-11	90	122.4	150	204.0	220	299.2
5/8-18	100	136	180	244.8	240	326.4
3/4-10	160	217.6	260	353.6	386	525.0
3/4-16	180	244.8	300	408.0	420	571.2
7/8-9	140	190.4	400	544.0	600	816.0
7/8-14	155	210.8	440	598.4	660	897.6
1-8	220	299.2	580	788.8	900	1,244.0
1-12	240	326.4	640	870.4	1,000	1,360.0

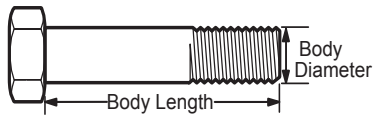
The guides and ruler furnished below are designed to help you select the appropriate hardware.



Nut, M8

Thread Diameter (mm)  
Inside Diameter (in)  
Threads per inch

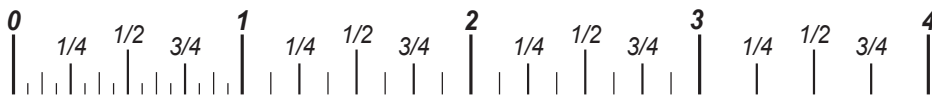
Nut, 1/2-16



Screw, M8- 1.25 x 25

Thread Diameter (mm)  
Body Diameter  
Distance between threads (mm)  
Threads per inch  
Body Length (mm)  
Body Length (in)

Screw, 1/2- 16 x 2



## Standard Hardware Sizing

When a washer or nut is identified as 1/2" (M8), this is the *Nominal size*, meaning the *inside diameter* is 1/2 inch (8mm metric thread diameter); if a second number is present it represents the *threads per inch* (distance between threads).

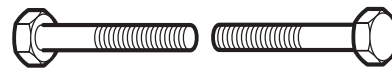
When bolt or capscrew is identified as 1/2 - 16 x 2" (M8 - 1.25 x 50), this means the *Nominal size*, or body diameter is 1/2 inch (8mm metric thread diameter), the second number, 16, represents the *threads per inch*, (*distance between threads*). The final number is the body length of the bolt or screw, 2 inches (50mm).

## NOTES

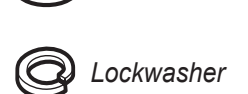
- These torque values are to be used for all hardware excluding: locknuts, self-tapping screws, thread forming screws, sheet metal screws and socket head setscrews.
- Recommended seating torque values for locknuts:
  - for prevailing torque locknuts - use 65% of grade 5 torques.
  - for flange whizlock nuts and screws - use 135% of grade 5 torques.
- Unless otherwise noted on assembly drawings, all torque values must meet this specification.

## Common Hardware Types

Hex Head Capscrew



Washer



Carriage Bolt



Hex Nut

## Wrench & Fastener Size Guide

1/4" Bolt or Nut Wrench—7/16"	5/16" Bolt or Nut Wrench—1/2"	3/8" Bolt or Nut Wrench—9/16"	7/16" Bolt or Nut Wrench (Bolt)—5/8" Wrench (Nut)—11/16"	1/2" Bolt or Nut Wrench—3/4"
M6 Bolt or Nut Wrench—10mm	M8 Bolt or Nut Wrench—13mm	M10 Bolt or Nut Wrench—17mm	M12 Bolt or Nut Wrench—19mm	M14 Bolt or Nut Wrench—22mm

**VICTA**