



Parts Manual

Mfg. No: 2691598-00
19" Alloy Self Propelled Mower 850

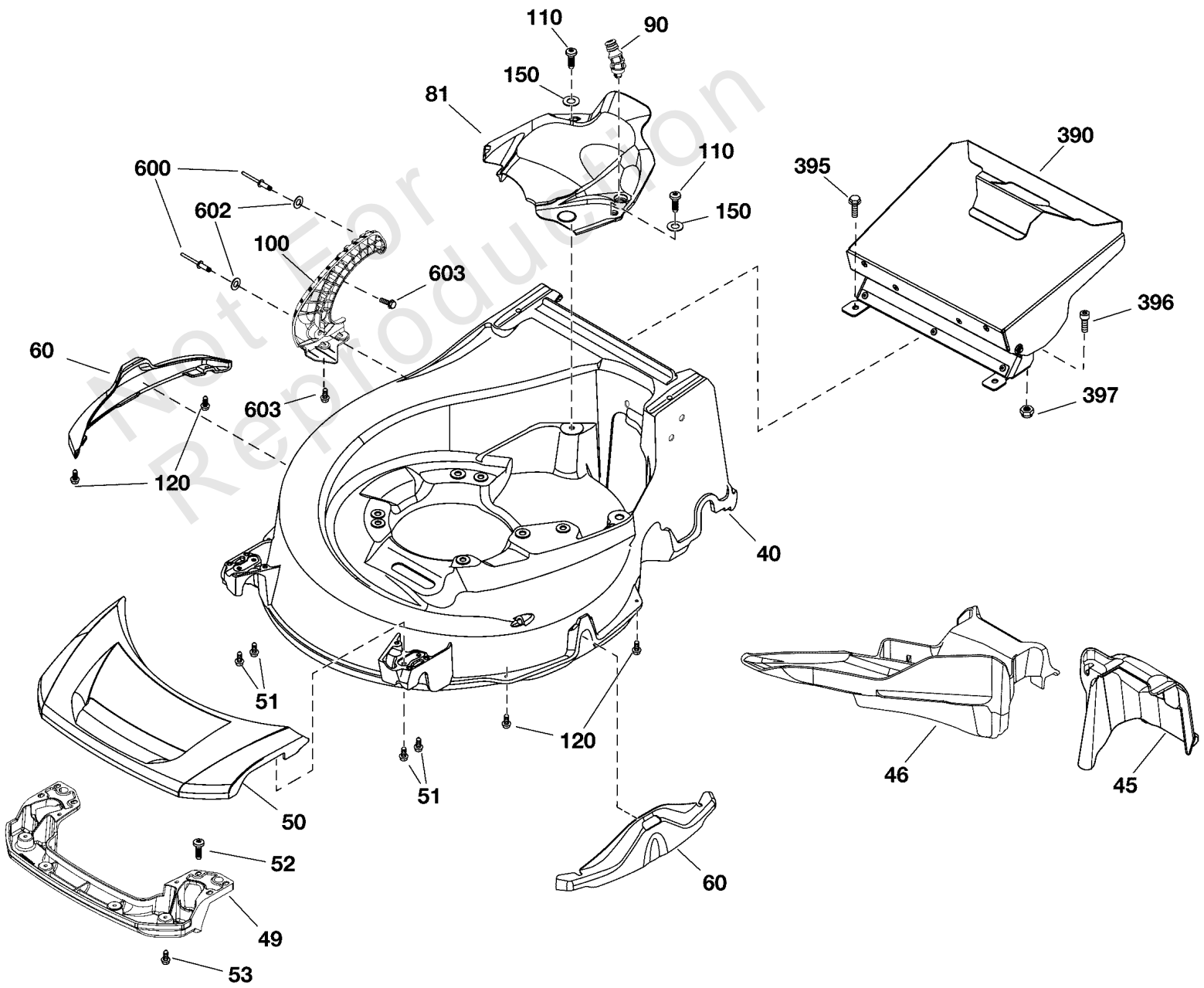
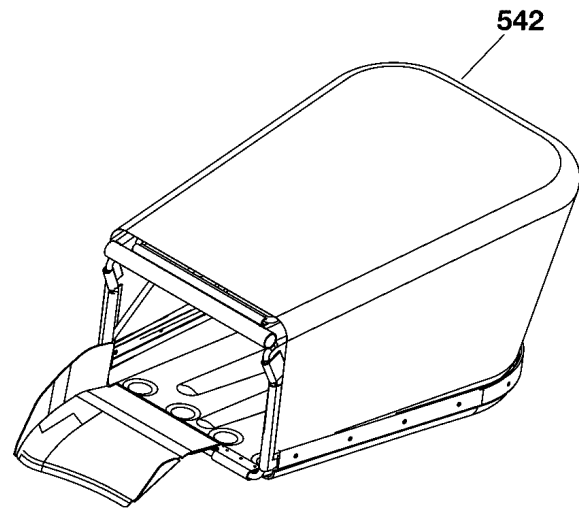
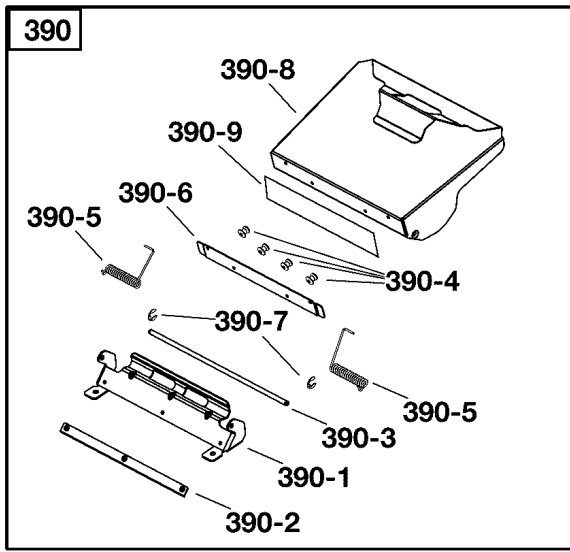
| Model Components | Page |
|---------------------------------|-------------|
| Deck & Catcher Group..... | 4 |
| Engine & Blade Group..... | 6 |
| Handles & Controls Group..... | 8 |
| Wheels & Axles Group..... | 10 |
| Torque Specification Chart..... | 12 |

Not For
Reproduction

Deck & Catcher Group

Note: Unless noted otherwise, use the standard torque specifications

Mfg. No: 2691598-00



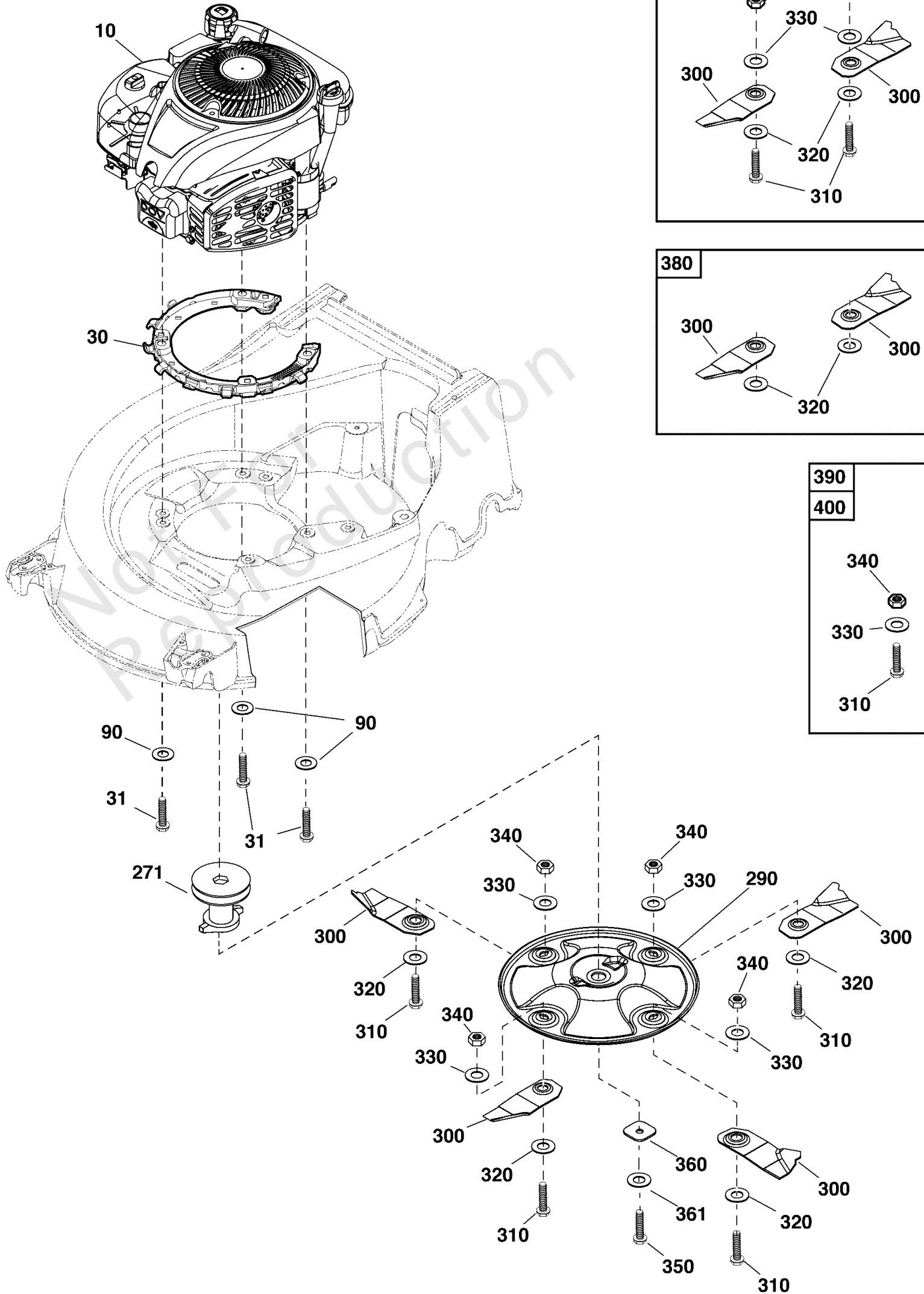
Deck & Catcher Group

| REF NO | PART NO | QTY | DESCRIPTION |
|--------|-----------|-----|---|
| 40 | CH87102EL | 1 | BASEPLATE, Commercial, Silver Hammertone |
| 45 | CH87433G | 1 | COVER, Chute |
| 46 | CH87203A | 1 | MULCH PLUG, Silver |
| 49 | CH87113A | 1 | BUMPER, Front |
| 50 | CH87115A | 1 | DECK TRIM, Front |
| 51 | ----- | 4 | SCREW -(Not a serviceable part) |
| 52 | ----- | 2 | SCREW, Pan Torx, ST4.8 x 16 -(Not a serviceable part) |
| 53 | ----- | 8 | SCREW, Mush Head, 8 x 5/8 -(Not a serviceable part) |
| 60 | CH87147A | 2 | TRIM, Side, Steel, Black |
| 60 | CH87118G | 2 | TRIM, Side, Black -(Optional) |
| 81 | CH87377G | 1 | COVER, Belt, Black |
| 90 | HA28024A | 1 | WASHOUT PORT |
| 100 | CH87154G | 1 | SEGMENT |
| 110 | ----- | 2 | SCREW, Pan Torx, Trilobe, M6 x 19 -(Not a serviceable part) |
| 120 | ----- | 4 | SCREW, Pan Torx Self Tap, ST4.2 x 16 -(Not a serviceable part) |
| 150 | ----- | 2 | WASHER, 6.4 x 16 x 2 -(Not a serviceable part) |
| 390 | CH87405A | 1 | REAR FLAP ASSEMBLY -(Includes Ref. Nos. 0390-1 through 0390-8) |
| 390-1 | ----- | 1 | BRACKET, Rear Flap -(Not a serviceable part) |
| 390-2 | ----- | 1 | PLATE, Seal End Clamping -(Not a serviceable part) |
| 390-3 | ----- | 1 | ROD, Flap -(Not a serviceable part) |
| 390-4 | ----- | 13 | RIVET -(Not a serviceable part) |
| 390-5 | ----- | 2 | SPRING -(Not a serviceable part) |
| 390-6 | ----- | 1 | PLATE, Seal Inner Clamping -(Not a serviceable part) |
| 390-7 | ----- | 2 | CIRCLIP -(Not a serviceable part) |
| 390-8 | ----- | 1 | FLAP, Rear -(Not a serviceable part) |
| 390-9 | ----- | 1 | SEAL, Rear Flap -(Not a serviceable part) |
| 395 | ----- | 2 | BOLT, M8 x 25 -(Not a serviceable part) |
| 396 | ----- | 2 | BOLT, Torx, M5 x 16 -(Not a serviceable part) |
| 397 | ----- | 2 | NUT, Nylock, M5 -(Not a serviceable part) |
| 542 | GC12014A | 1 | CATCHER ASSEMBLY |
| 600 | ----- | 2 | RIVET -(Not a serviceable part) |
| 602 | ----- | 2 | WASHER, 5.3 x 12 x 1 -(Not a serviceable part) |
| 603 | ----- | 2 | SCREW, 4.8 x 12 -(Not a serviceable part) |

Engine & Blade Group

Note: Unless noted otherwise, use the standard torque specifications

Mfg. No: 2691598-00



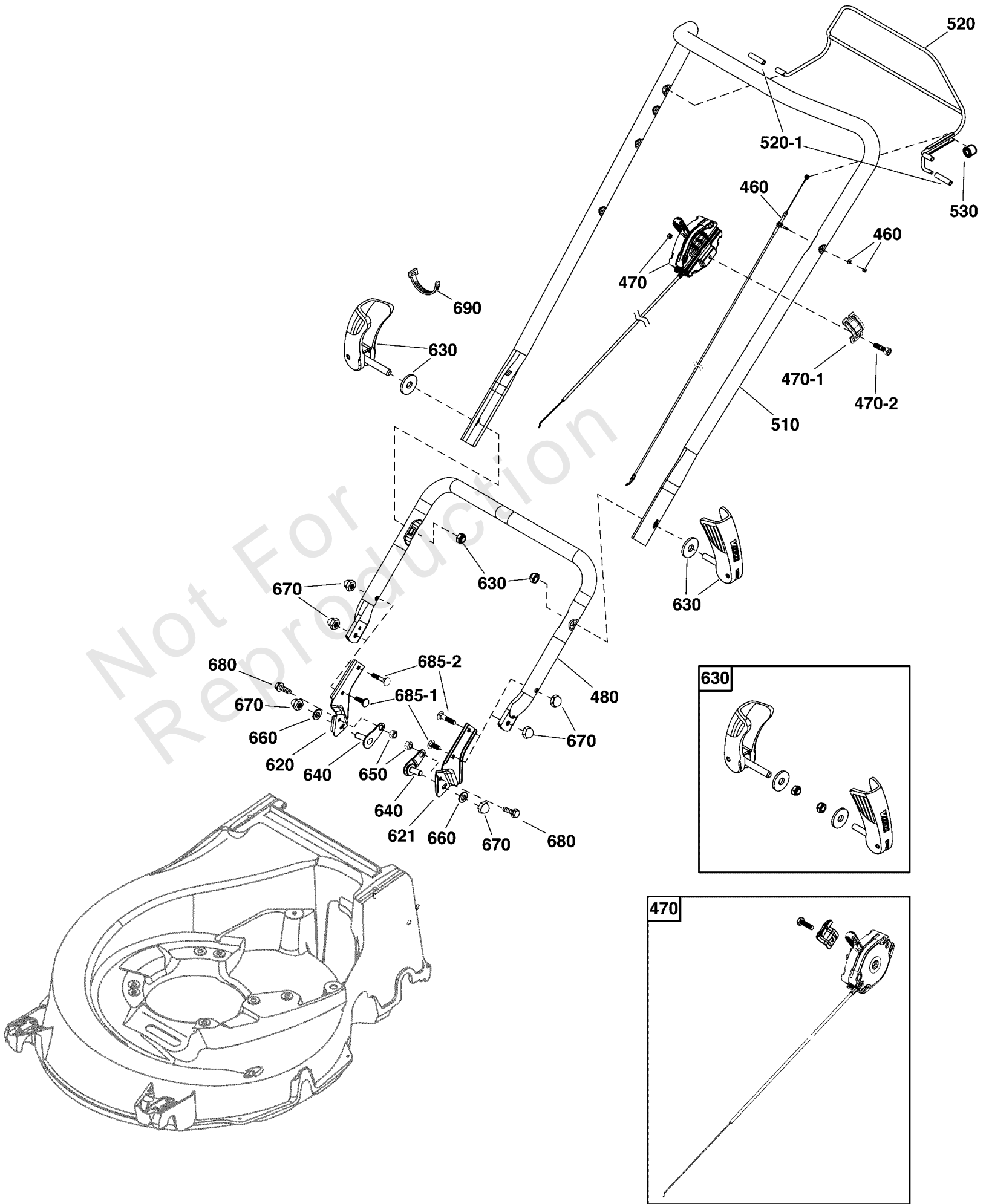
Engine & Blade Group

| REF NO | PART NO | QTY | DESCRIPTION |
|--------|----------------|-----|--|
| 10 | 123P32-0031-H5 | 1 | ** ENGINE, Briggs & Stratton 850 Series |
| 30 | CH87130C | 1 | SPACER RING |
| 31 | HA21318D | 3 | BOLT, Taptite HW, 3/8"UNC x 50 |
| 90 | HA22277D | 3 | WASHER, 3/8 |
| 271 | EE14968B | 1 | SLEEVE & PULLEY ASSEMBLY |
| 290 | CA09524D | 1 | BLADE DISC, Low Inertia |
| 300 | ----- | 4 | BLADE, Low Profile -(Not a serviceable part) |
| 310 | ----- | 4 | BOLT, Blade -(Not a serviceable part) |
| 320 | CA09347A | 4 | WASHER, Blade Tension |
| 330 | HA25276BZ | 4 | WASHER, Belleville |
| 340 | CA09241D | 4 | NUT, Nylock, 3/8 UNC |
| 350 | HA21405B | 1 | BOLT, 3/8 UNF x 2-1/2 |
| 360 | EN73054B | 1 | WASHER, Blade Disc |
| 361 | EE14537B | 1 | WASHER, Blade Disc, 4st |
| 370 | CA09470B | 1 | KIT, Blade & Bolt, Bulk Pack (1 Pack) -(Includes Ref. Nos. 300, 310, 320, 330 & 340) |
| 380 | CA09470P | 1 | BLADE KIT, BULK PACK (40 PAIRS) -(Includes Ref. Nos. 300 & 320) |
| 390 | CA09277S | 1 | KIT, Hardware, Bolt, Washer, Nut (1 Pack) -(Includes Ref. Nos. 310, 330 & 340) |
| 400 | CA09277P | 1 | KIT, Hardware, Blade, Washer, Nut , Bulk Pack (50 Pairs) -(Includes Ref. Nos. 310, 330 & 340) |

Handles & Controls Group

Note: Unless noted otherwise, use the standard torque specifications

Mfg. No: 2691598-00



Handles & Controls Group

| REF NO | PART NO | QTY | DESCRIPTION |
|--------|----------|-----|---|
| 460 | TC05088A | 1 | CABLE, Clutch |
| 470 | 80083572 | 1 | THROTTLE CONTROL, No Choke 830mm - 25mm Clamp |
| 470-1 | TC05004A | 1 | CLAMP, 25MM -(Included with Ref. No. 470) |
| 470-2 | HA27291A | 1 | SCREW, M5 x 18 -(Included with Ref. No. 470) |
| 480 | 80080136 | 1 | HANDLE, Lower |
| 510 | 80082445 | 1 | HANDLE, Upper |
| 520 | 80084181 | 1 | BALE ARM ASSEMBLY COMPLETE -(Includes Ref. Nos. 520-1 & 530) |
| 520-1 | ----- | 2 | SLEEVE, Bail Arm -(Not a serviceable part) |
| 530 | ----- | 1 | SLEEVE, Plug -(Not a serviceable part) |
| 620 | 80082442 | 1 | HANDLE MOUNT, Right, Black |
| 621 | 80082440 | 1 | HANDLE MOUNT, Left, Black |
| 630 | CH86781P | 1 | WINGED LOCKING LEVER PACK -(2 sets included) |
| 640 | CH87524D | 2 | BOLT, Saddle |
| 650 | ----- | 2 | NUT, Nylock, M8 -(Not a serviceable part) |
| 660 | ----- | 2 | WASHER, Flat, 8 x 17 x 2 -(Not a serviceable part) |
| 670 | HA28144D | 6 | NUT, Dome |
| 680 | HA21585D | 2 | BOLT, Hex Shoulder |
| 685-1 | ----- | 2 | COACH BOLT, M8*20 -(Not a serviceable part) |
| 685-2 | ----- | 2 | COACH BOLT, M8*40 -(Not a serviceable part) |
| 690 | ----- | 1 | * CABLE TIE -(Not a serviceable part) |

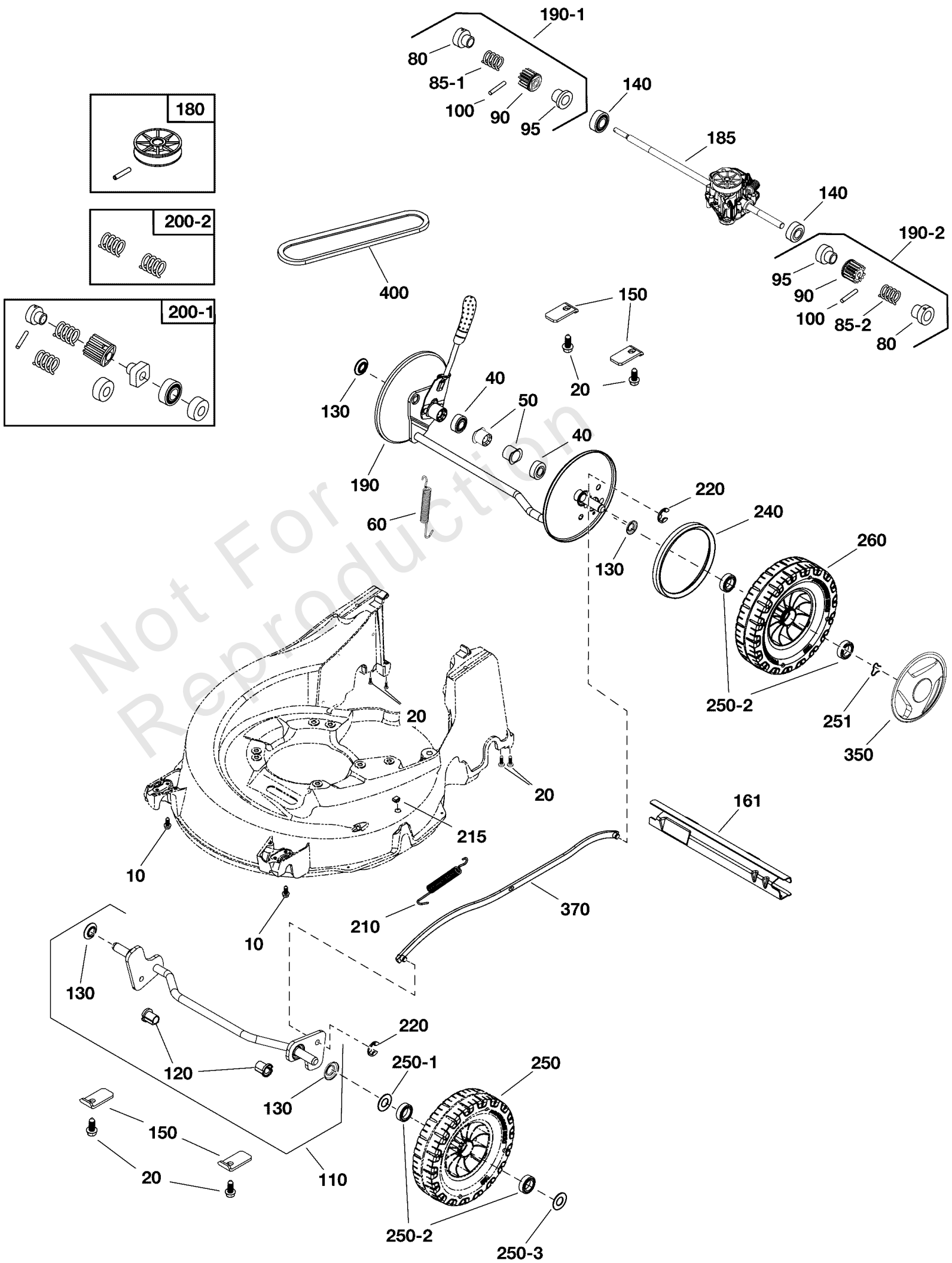
Footnotes:

Note:* Items without part numbers are common fasteners and are available at your local hardware store.

Wheels & Axles Group

Note: Unless noted otherwise, use the standard torque specifications

Mfg. No: 2691598-00



Wheels & Axles Group

| REF NO | PART NO | QTY | DESCRIPTION |
|--------|-----------|-----|--|
| 10 | ----- | 4 | SCREW, Hex Flange, M5 x 16 -(Not a serviceable part) |
| 20 | ----- | 6 | SCREW, Pan Torx Trilobe, M6 x 19 -(Not a serviceable part) |
| 40 | CH84142A | 2 | RING, Sealing |
| 50 | CH84185U | 2 | BUSHING, Rear Axle |
| 60 | HA28146D | 1 | SPRING, Gearbox |
| 80 | ----- | 2 | SLEEVE, Fixed -(Not a serviceable part) |
| 85-1 | ----- | 1 | SPRING, RH, Black -(Not a serviceable part) |
| 85-2 | ----- | 1 | SPRING, LH, Yellow -(Not a serviceable part) |
| 90 | ----- | 1 | DRIVE GEAR -(Not a serviceable part) |
| 95 | ----- | 1 | SLEEVE, Drive -(Not a serviceable part) |
| 100 | ----- | 2 | PIN, Roll 1/8 x 3/4 SP -(Not a serviceable part) |
| 110 | CH88438A | 1 | AXLE, Front |
| 120 | CH86276A | 2 | BUSHING, Front Axle -(Includes Ref. Nos. 120 & 130) |
| 130 | CH81445A | 4 | DUST SEAL |
| 140 | 80084367 | 2 | BEARING |
| 150 | CH88275D | 4 | RETAINING PLATE, Axle |
| 161 | CH87381D | 1 | BRACKET |
| 180 | 80080432 | 1 | KIT, Pulley & Pin |
| 185 | CH87295A | 1 | GEARBOX GT-MC600 |
| 190 | CH88444A | 1 | AXLE ASSEMBLY, Rear -(Includes Ref. Nos. 130) |
| 190-1 | ----- | 1 | GEAR, Over - Run Clutch, RH Black -(Not a serviceable part) |
| 190-2 | ----- | 1 | GEAR, Over - Run Clutch, RH Yellow -(Not a serviceable part) |
| 200-1 | CH86816S | 1 | OVER RUN CLUTCH KIT -(Includes Ref .Nos. 40 (Qty 2), 80, 85-1,85-2, 90, 95, 100, 140) |
| 200-2 | CH86823S | 1 | OVER RUN SPRING KIT -(Includes Ref. Nos. 85-1 & 85-2) |
| 210 | CH88451AW | 1 | SPRING |
| 215 | HA28127A | 1 | PLUG |
| 220 | HA25131D | 2 | E-CLIP |
| 240 | CH82847A | 2 | SEAL, Drive Wheel |
| 250 | CH86334A | 2 | WHEEL, Pro, 8" |
| 260 | CH86333A | 2 | WHEEL, Pro, 8", REAR |
| 250-1 | ----- | 2 | WASHER, Wheel, Front -(Not a serviceable part) |
| 250-2 | HA25839A | 8 | BEARING, Wheel, 14.1 x 28.0mm 8 off |
| 250-3 | ----- | 2 | WASHER, Wheel, Front -(Not a serviceable part) |
| 251 | CH86298A | 4 | CAPTIVATED CLIP, Wheel |
| 350 | CH86112A | 4 | HUBCAP, Black |
| 370 | CH88423A | 1 | CONNECTING LINK |
| 400 | CH87380A | 1 | BELT |

Hardware Identification & Torque Specifications

| Torque Specification Chart | | | | | | | | |
|--|-----------|------|-----------|------|------------|------|------------|------|
| FOR STANDARD METRIC MACHINE HARDWARE (Tolerance ± 20%) | | | | | | | | |
| Property Class | 5.6 | | 8.8 | | 10.9 | | 12.9 | |
| | Class 5.6 | | Class 8.8 | | Class 10.9 | | Class 12.9 | |
| Size Of Hardware | in/lbs | Nm. | in/lbs | Nm. | in/lbs | Nm. | in/lbs | Nm. |
| | ft/lbs | | ft/lbs | | ft/lbs | | ft/lbs | |
| M3 | 5.88 | .56 | 13.44 | 1.28 | 19.2 | 1.80 | 22.92 | 2.15 |
| M4 | 13.44 | 1.28 | 30.72 | 2.90 | 43.44 | 4.10 | 52.56 | 4.95 |
| M5 | 26.4 | 2.50 | 60.96 | 5.75 | 5.97 | 8.10 | 7.15 | 9.7 |
| M6 | 44.64 | 4.3 | 7.3 | 9.9 | 10.3 | 14 | 12.1 | 16.5 |
| M7 | 5.2 | 7.1 | 12.1 | 16.5 | 16.9 | 23 | 19.9 | 27 |
| M8 | 7.7 | 10.5 | 17.7 | 24 | 25 | 34 | 29 | 40 |
| M10 | 15 | 21 | 35 | 48 | 50 | 67 | 59 | 81 |
| M12 | 26 | 36 | 61 | 83 | 86.2 | 117 | 103 | 140 |
| M14 | 42 | 58 | 101 | 132 | 136 | 185 | 162 | 220 |
| M16 | 64 | 88 | 147 | 200 | 210 | 285 | 250 | 340 |
| M18 | 89 | 121 | 202 | 275 | 287 | 390 | 346 | 470 |
| M20 | 126 | 171 | 290 | 390 | 405 | 550 | 486 | 660 |
| M22 | 169 | 230 | 390 | 530 | 559 | 745 | 656 | 890 |
| M24 | 217 | 295 | 497 | 375 | 708 | 960 | 840 | 1140 |
| M27 | 320 | 435 | 733 | 995 | 1032 | 1400 | 1239 | 1680 |
| M30 | 435 | 590 | 995 | 1350 | 1401 | 1900 | 1681 | 2280 |
| M33 | 590 | 800 | 1349 | 1830 | 1902 | 2580 | 2278 | 3090 |
| M36 | 759 | 1030 | 1740 | 2360 | 2441 | 3310 | 2935 | 3980 |
| M39 | 988 | 1340 | 2249 | 3050 | 3163 | 4290 | 3798 | 5150 |

| Torque Specification Chart | | | | | | |
|---|-------------|-------|-------------|-------|-------------|---------|
| FOR STANDARD MACHINE HARDWARE (Tolerance ± 20%) | | | | | | |
| Hardware Grade | No Marks | | SAE Grade 5 | | SAE Grade 8 | |
| | SAE Grade 2 | | SAE Grade 5 | | SAE Grade 8 | |
| Size Of Hardware | in/lbs | Nm. | in/lbs | Nm. | in/lbs | Nm. |
| | ft/lbs | | ft/lbs | | ft/lbs | |
| 8-32 | 19 | 2.1 | 30 | 3.4 | 41 | 4.6 |
| 8-36 | 20 | 2.3 | 31 | 3.5 | 43 | 4.9 |
| 10-24 | 27 | 3.1 | 43 | 4.9 | 60 | 6.8 |
| 10-32 | 31 | 3.5 | 49 | 5.5 | 68 | 7.7 |
| 1/4-20 | 66 | 7.6 | 8 | 10.9 | 12 | 16.3 |
| 1/4-28 | 76 | 8.6 | 10 | 13.6 | 14 | 19.0 |
| 5/16-18 | 11 | 15.0 | 17 | 23.1 | 25 | 34.0 |
| 5/16-24 | 12 | 16.3 | 19 | 25.8 | 29 | 34.0 |
| 3/8-16 | 20 | 27.2 | 30 | 40.8 | 45 | 61.2 |
| 3/8-24 | 23 | 31.3 | 35 | 47.6 | 50 | 68.0 |
| 7/16-14 | 30 | 40.8 | 50 | 68.0 | 70 | 95.2 |
| 7/16-20 | 35 | 47.6 | 55 | 74.8 | 80 | 108.8 |
| 1/2-13 | 50 | 68.0 | 75 | 102.0 | 110 | 149.6 |
| 1/2-20 | 55 | 74.8 | 90 | 122.4 | 120 | 163.2 |
| 9/16-12 | 65 | 88.4 | 110 | 149.6 | 150 | 204.0 |
| 9/16-18 | 75 | 102.0 | 120 | 163.2 | 170 | 231.2 |
| 5/8-11 | 90 | 122.4 | 150 | 204.0 | 220 | 299.2 |
| 5/8-18 | 100 | 136 | 180 | 244.8 | 240 | 326.4 |
| 3/4-10 | 160 | 217.6 | 260 | 353.6 | 386 | 525.0 |
| 3/4-16 | 180 | 244.8 | 300 | 408.0 | 420 | 571.2 |
| 7/8-9 | 140 | 190.4 | 400 | 544.0 | 600 | 816.0 |
| 7/8-14 | 155 | 210.8 | 440 | 598.4 | 660 | 897.6 |
| 1-8 | 220 | 299.2 | 580 | 788.8 | 900 | 1,244.0 |
| 1-12 | 240 | 326.4 | 640 | 870.4 | 1,000 | 1,360.0 |

The guides and ruler furnished below are designed to help you select the appropriate hardware.



Nut, M8

Thread Diameter (mm)

Inside Diameter (in) Threads per inch

Nut, 1/2-16



Screw, M8- 1.25 x 25

Thread Diameter (mm) Distance between threads (mm) Body Length (mm)

Body Diameter Threads per inch Body Length (in)

Screw, 1/2- 16 x 2



Standard Hardware Sizing

When a washer or nut is identified as 1/2" (M8), this is the *Nominal size*, meaning the *inside diameter* is 1/2 inch (8mm metric thread diameter); if a second number is present it represents the *threads per inch* (distance between threads).

When bolt or capscrew is identified as 1/2 - 16 x 2" (M8 - 1.25 x 50), this means the *Nominal size*, or body diameter is 1/2 inch (8mm metric thread diameter), the second number, 16, represents the *threads per inch*, (*distance between threads*). The final number is the body length of the bolt or screw, 2 inches (50mm).

NOTES

- These torque values are to be used for all hardware excluding: locknuts, self-tapping screws, thread forming screws, sheet metal screws and socket head setscrews.
- Recommended seating torque values for locknuts:
 - for prevailing torque locknuts - use 65% of grade 5 torques.
 - for flange whizlock nuts and screws - use 135% of grade 5 torques.
- Unless otherwise noted on assembly drawings, all torque values must meet this specification.

Common Hardware Types

Hex Head Capscrew



Washer



Carriage Bolt



Hex Nut

Wrench & Fastener Size Guide

| | | | | |
|----------------------------------|----------------------------------|----------------------------------|--|---------------------------------|
| | | | | |
| 1/4" Bolt or Nut Wrench—7/16" | 5/16" Bolt or Nut Wrench—1/2" | 3/8" Bolt or Nut Wrench—9/16" | 7/16" Bolt or Nut Wrench (Bolt)—5/8" Wrench (Nut)—11/16" | 1/2" Bolt or Nut Wrench—3/4" |
| M6 Bolt or Nut Wrench—10mm | M8 Bolt or Nut Wrench—13mm | M10 Bolt or Nut Wrench—17mm | M12 Bolt or Nut Wrench—19mm | M14 Bolt or Nut Wrench—22mm |

VICTA