



Parts Manual

Mfg. No: 2691600-00
21" Alloy Self Propelled Mower 850

Model Components	Page
Deck & Catcher Group.....	4
Engine & Blade Group.....	8
Handles & Controls Group.....	10
Wheels & Axles Group.....	12
Torque Specification Chart.....	16

Not For
Reproduction

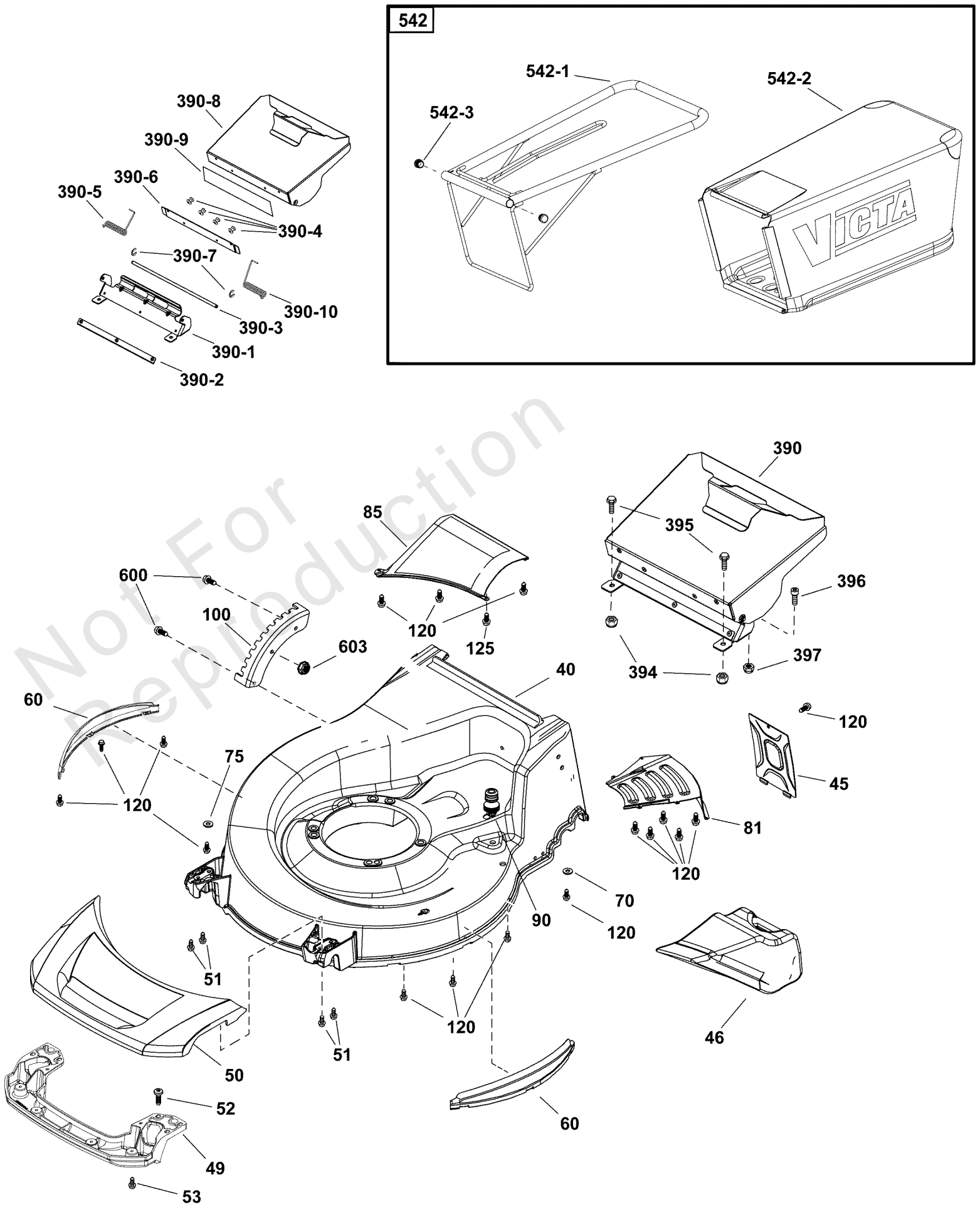
Deck & Catcher Group

REF NO	PART NO	QTY	DESCRIPTION
40	80084136	1	BASEPLATE, 21" Commercial, Silver Hammertone
45	80084297	1	COVER, Gear Box
46	80084293	1	MULCH PLUG, 21"
49	CH87113A	1	BUMPER, Front
50	CH87115A	1	DECK TRIM, Front
51	-----	4	SCREW -(Not a serviceable part)
52	-----	2	SCREW, Pan Torx, ST4.8 x 16 -(Not a serviceable part)
53	-----	8	SCREW, Mush Head, 8 x 5/8 -(Not a serviceable part)
60	80086922	1	TRIM, Side, Black
70	-----	1	WASHER -(Not a serviceable part)
75	-----	1	WASHER -(Not a serviceable part)
81	80084294	1	COVER, Belt, Black
85	80084298	1	GRASS RAMP
90	80090516	1	WASHOUT PORT
100	80084206	1	SEGMENT
120	-----	18	SCREW, 4.8 x 12 -(Not a serviceable part)
125	-----	1	SCREW, HEX, 4.8 x 20 -(Not a serviceable part)
390	80084141	1	REAR FLAP ASSEMBLY -(Includes Ref. Nos. 0390-1 through 0390-8)
390-1	-----	1	BRACKET, Rear Flap -(Not a serviceable part)
390-2	-----	1	PLATE, Seal End Clamping -(Not a serviceable part)
390-3	-----	1	ROD, Flap -(Not a serviceable part)
390-4	-----	7	RIVET -(Not a serviceable part)
390-5	80089449	1	SPRING, RH
390-6	-----	1	PLATE, Seal Inner Clamping -(Not a serviceable part)
390-7	-----	2	CIRCLIP -(Not a serviceable part)
390-8	80084140	1	FLAP, Rear
390-9	80084202	1	SEAL, Rear Flap
390-10	80088673	1	SPRING, LH
394	-----	2	* NUT, M4 -(Not a serviceable part)
395	-----	2	BOLT, M8 x 25 -(Not a serviceable part)
396	-----	2	BOLT, Torx, M5 x 16 -(Not a serviceable part)
397	-----	2	NUT, Nylock, M5 -(Not a serviceable part)
542	80084270	1	CATCHER ASSEMBLY
542-1	-----	1	FRAME, Catcher -(Not a serviceable part)
542-2	80084279	1	BAG, Catcher 21"
542-3	CH2475A	1	PLUG, Handle -(Not a serviceable part)
600	-----	2	SCREW, M6 -(Not a serviceable part)

Deck & Catcher Group

Note: Unless noted otherwise, use the standard torque specifications

Mfg. No: 2691600-00



Deck & Catcher Group

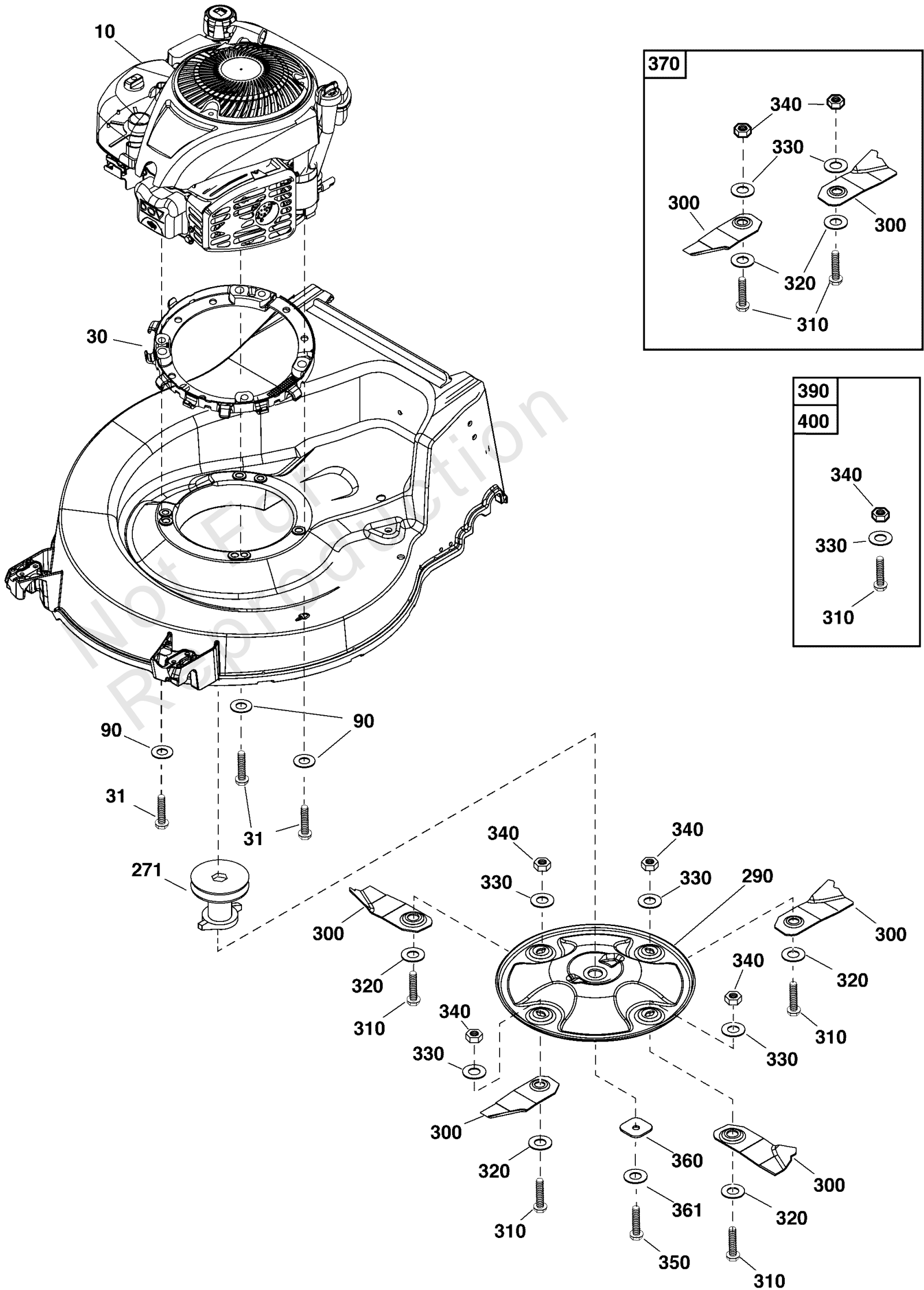
REF NO	PART NO	QTY	DESCRIPTION
603	-----	2	NUT, M6 -(Not a serviceable part)

Not For Reproduction

Engine & Blade Group

Note: Unless noted otherwise, use the standard torque specifications

Mfg. No: 2691600-00



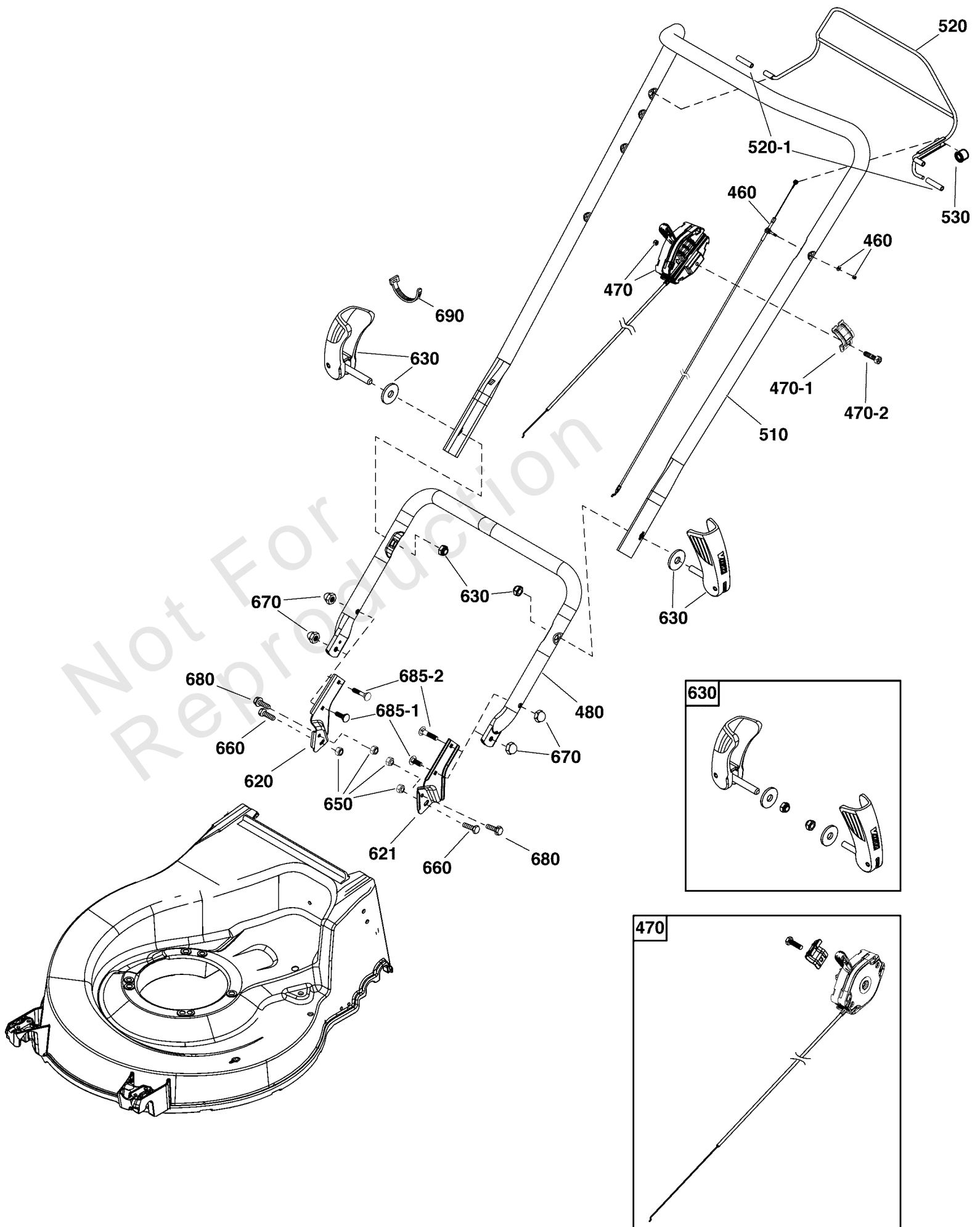
Engine & Blade Group

REF NO	PART NO	QTY	DESCRIPTION
10	123P32-0031-H5	1	** ENGINE, Briggs & Stratton 850 Series
30	CH87130H	1	SPACER RING
31	HA21318D	3	BOLT, Taptite HW, 3/8"UNC x 50
90	HA22277D	3	WASHER, 3/8
271	80085511	1	LOCKING SLEEVE & PULLEY ASSEMBLY, 21"
290	CA09524D	1	BLADE DISC, Low Inertia
300	-----	2	BLADE, Mower, HI-Profile -(Not a serviceable part)
310	-----	2	BOLT, Blade -(Not a serviceable part)
320	CA09347A	2	WASHER, Blade Tension
330	HA25276BZ	2	WASHER, Belleville
340	CA09241D	2	NUT, Nylock, 3/8 UNC
350	HA21405B	1	BOLT, 3/8 UNF x 2-1/2
360	EN73054B	1	WASHER, Blade Disc
361	EE14537B	1	WASHER, Blade Disc, 4st
370	CA09276B	1	KIT, Blade & Bolt, Hi-Profile (1 Pair) -(Includes Ref. Nos. 300, 310, 320, 330 & 340)
390	CA09277S	1	KIT, Hardware, Bolt, Washer, Nut (1 Pack) -(Includes Ref. Nos. 310, 330 & 340)
400	CA09277P	1	KIT, Hardware, Blade, Washer, Nut , Bulk Pack (50 Pairs) -(Includes Ref. Nos. 310, 330 & 340)

Handles & Controls Group

Note: Unless noted otherwise, use the standard torque specifications

Mfg. No: 2691600-00



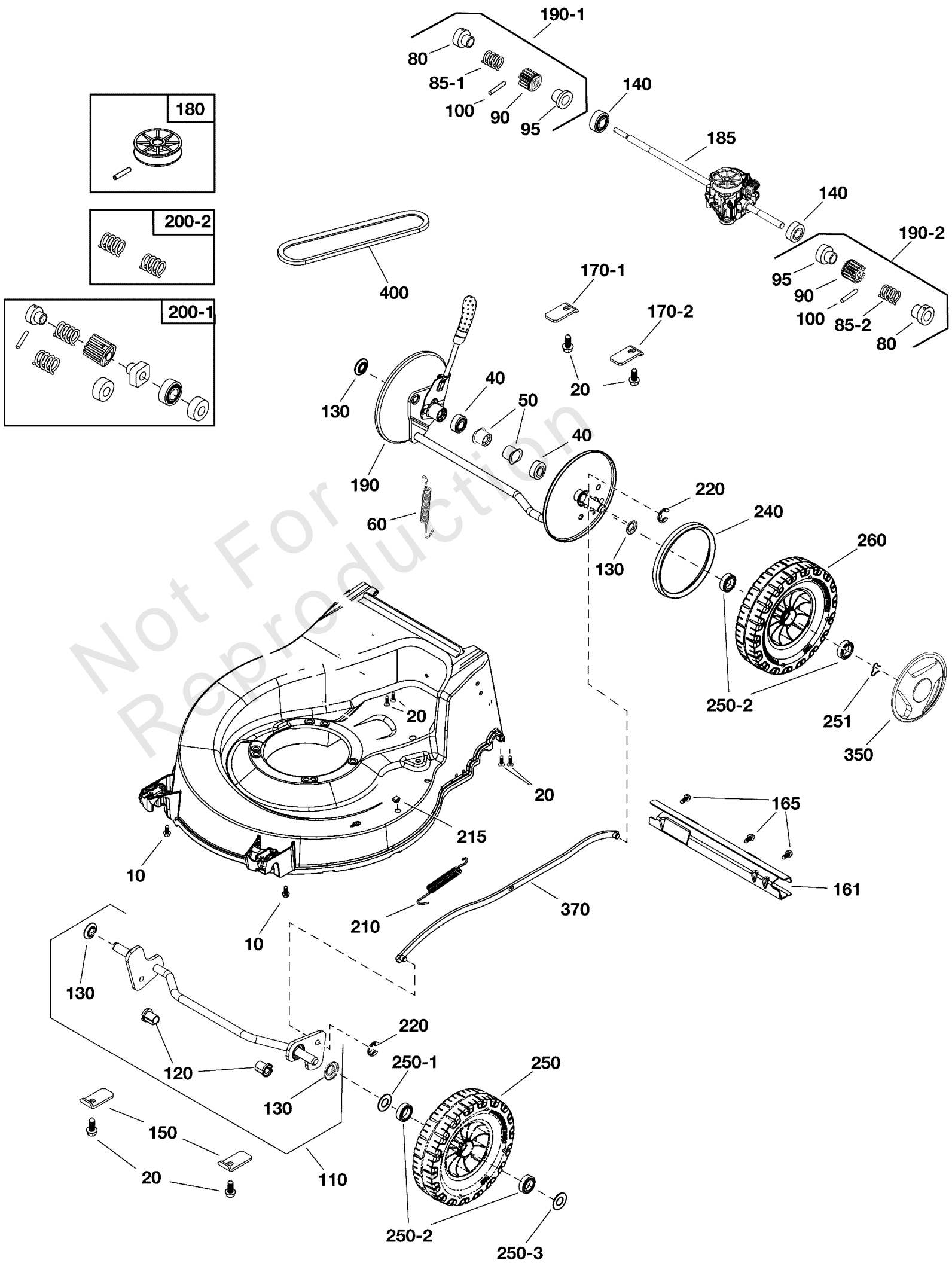
Handles & Controls Group

REF NO	PART NO	QTY	DESCRIPTION
460	80095464	1	CABLE, Clutch
470	80095970	1	THROTTLE CONTROL, No Choke 935mm - 25mm Clamp -(Includes Ref. Nos. 470-1 & 470-2)
470-1	TC05004A	1	CLAMP, 25MM
470-2	HA27291A	1	SCREW, M5 x 18
480	80084137	1	HANDLE, Lower
510	80084285	1	HANDLE, Upper
520	80084286	1	BALE ARM ASSEMBLY COMPLETE -(Includes Ref. Nos. 520-1 & 530)
520-1	-----	2	SLEEVE, Bail Arm -(Not a serviceable part)
530	-----	1	SLEEVE, Plug -(Not a serviceable part)
620	80082442	1	HANDLE MOUNT, Right, Black
621	80082440	1	HANDLE MOUNT, Left, Black
630	CH86781P	1	WINGED LOCKING LEVER PACK -(2 sets included)
650	-----	4	NUT, Nylock, M8 -(Not a serviceable part)
660	-----	2	* BOLT, M8 x 22 -(Not a serviceable part)
670	HA28144D	4	NUT, Dome
680	HA21585D	2	BOLT, Hex Shoulder
685-1	-----	2	COACH BOLT, M8*20 -(Not a serviceable part)
685-2	-----	2	COACH BOLT, M8*40 -(Not a serviceable part)
690	-----	1	* CABLE TIE -(Not a serviceable part)

Wheels & Axles Group

Note: Unless noted otherwise, use the standard torque specifications

Mfg. No: 2691600-00



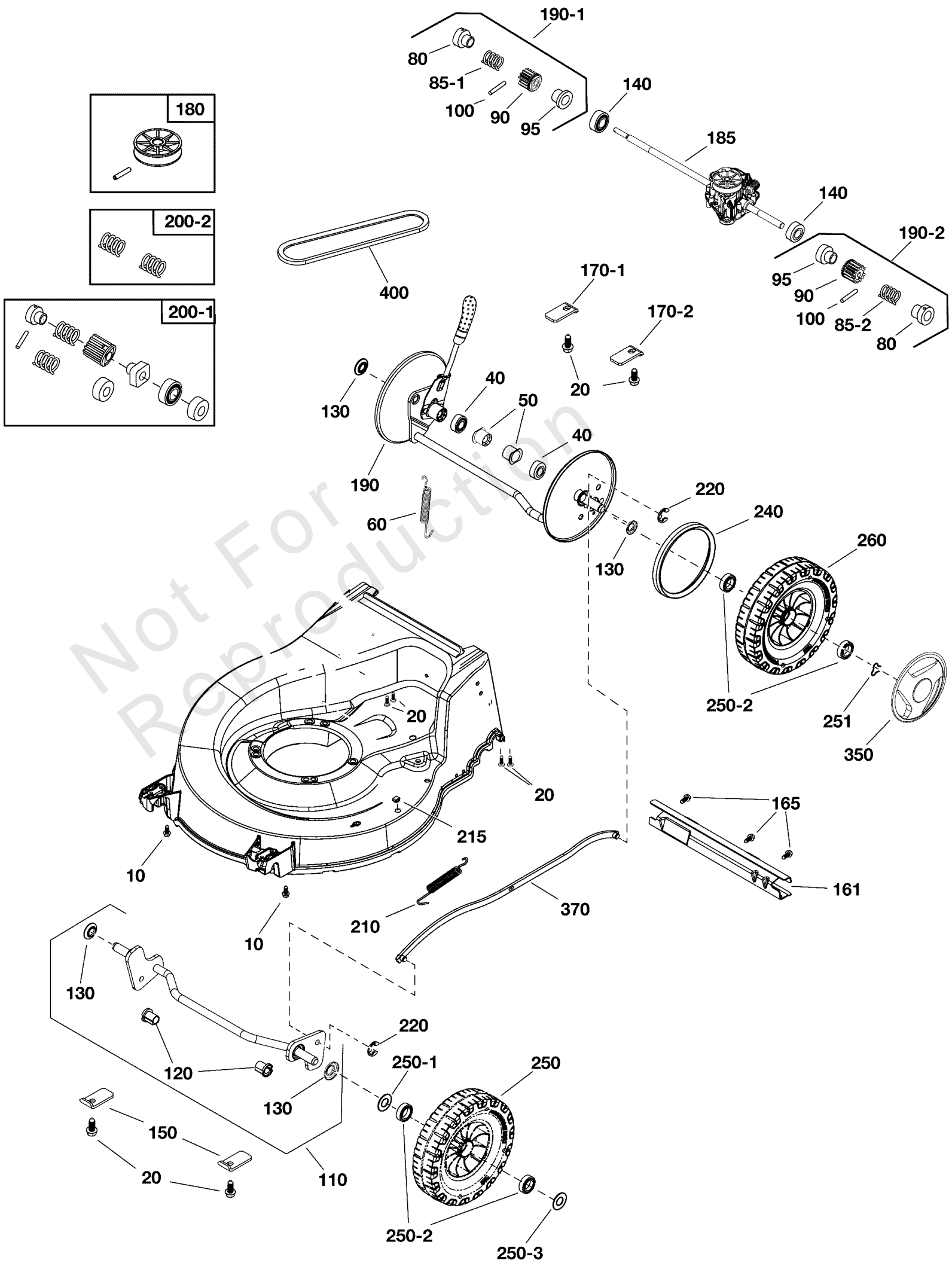
Wheels & Axles Group

REF NO	PART NO	QTY	DESCRIPTION
10	-----	4	SCREW, Hex Flange, M5 x 16 -(Not a serviceable part)
20	-----	6	SCREW, Pan Torx Trilobe, M6 x 19 -(Not a serviceable part)
40	CH84142A	2	RING, Sealing
50	CH84185U	2	BUSHING, Rear Axle
60	HA28146D	1	SPRING, Gearbox
80	-----	2	SLEEVE, Fixed -(Not a serviceable part)
85-1	-----	1	SPRING, RH, Black -(Not a serviceable part)
85-2	-----	1	SPRING, LH, Yellow -(Not a serviceable part)
90	-----	1	DRIVE GEAR -(Not a serviceable part)
95	-----	1	SLEEVE, Drive -(Not a serviceable part)
100	-----	2	PIN, Roll 1/8 x 3/4 SP -(Not a serviceable part)
110	80084355	1	AXLE, Front
120	CH86276A	2	BUSHING, Front Axle -(Includes Ref. Nos. 120 & 130)
130	CH81445A	4	DUST SEAL
140	80084367	2	BEARING
150	CH88275D	2	RETAINING PLATE, Axle
161	80084296	1	BRACKET, Rear
165	-----	3	SCREW, Torx, 4.2 - 12 -(Not a serviceable part)
170-1	80084295	1	RETAINING PLATE, Rear Axle, RH
170-2	80088295	1	RETAINING PLATE, Rear Axle, LH
180	80080432	1	KIT, Pulley & Pin
185	80084300	1	GEARBOX GT-MC600, 21"
190	80084365	1	AXLE ASSEMBLY, Rear -(Includes Ref. Nos. 130)
190-1	-----	1	GEAR, Over - Run Clutch, RH Black -(Not a serviceable part)
190-2	-----	1	GEAR, Over - Run Clutch, RH Yellow -(Not a serviceable part)
200-1	CH86816S	1	OVER RUN CLUTCH KIT -(Includes Ref. Nos. 40 (Qty 2), 80, 85-1,85-2, 90, 95, 100, 140)
200-2	CH86823S	1	OVER RUN SPRING KIT -(Includes Ref. Nos. 85-1 & 85-2)
210	CH88451AW	1	SPRING
215	HA28127A	1	PLUG
220	HA25131D	2	E-CLIP
240	CH82847A	2	SEAL, Drive Wheel
250	CH86334A	2	WHEEL, Pro, 8"
260	CH86333A	2	WHEEL, Pro, 8", REAR
250-1	-----	2	WASHER, Wheel, Front -(Not a serviceable part)
250-2	HA25839A	8	BEARING, Wheel, 14.1 x 28.0mm 8 off
250-3	-----	2	WASHER, Wheel, Front -(Not a serviceable part)
251	CH86298A	4	CAPTIVATED CLIP, Wheel
350	CH86112A	4	HUBCAP, Black
370	80084360	1	CONNECTING LINK

Wheels & Axles Group

Note: Unless noted otherwise, use the standard torque specifications

Mfg. No: 2691600-00



Wheels & Axles Group

REF NO	PART NO	QTY	DESCRIPTION
400	80084291	1	BELT

Not For Reproduction

Hardware Identification & Torque Specifications

Torque Specification Chart								
FOR STANDARD METRIC MACHINE HARDWARE (Tolerance ± 20%)								
Property Class	5.6		8.8		10.9		12.9	
	Class 5.6		Class 8.8		Class 10.9		Class 12.9	
Size Of Hardware	in/lbs	Nm.	in/lbs	Nm.	in/lbs	Nm.	in/lbs	Nm.
	ft/lbs		ft/lbs		ft/lbs		ft/lbs	
M3	5.88	.56	13.44	1.28	19.2	1.80	22.92	2.15
M4	13.44	1.28	30.72	2.90	43.44	4.10	52.56	4.95
M5	26.4	2.50	60.96	5.75	5.97	8.10	7.15	9.7
M6	44.64	4.3	7.3	9.9	10.3	14	12.1	16.5
M7	5.2	7.1	12.1	16.5	16.9	23	19.9	27
M8	7.7	10.5	17.7	24	25	34	29	40
M10	15	21	35	48	50	67	59	81
M12	26	36	61	83	86.2	117	103	140
M14	42	58	101	132	136	185	162	220
M16	64	88	147	200	210	285	250	340
M18	89	121	202	275	287	390	346	470
M20	126	171	290	390	405	550	486	660
M22	169	230	390	530	559	745	656	890
M24	217	295	497	375	708	960	840	1140
M27	320	435	733	995	1032	1400	1239	1680
M30	435	590	995	1350	1401	1900	1681	2280
M33	590	800	1349	1830	1902	2580	2278	3090
M36	759	1030	1740	2360	2441	3310	2935	3980
M39	988	1340	2249	3050	3163	4290	3798	5150

Torque Specification Chart						
FOR STANDARD MACHINE HARDWARE (Tolerance ± 20%)						
Hardware Grade	No Marks		SAE Grade 5		SAE Grade 8	
	SAE Grade 2		SAE Grade 5		SAE Grade 8	
Size Of Hardware	in/lbs	Nm.	in/lbs	Nm.	in/lbs	Nm.
	ft/lbs		ft/lbs		ft/lbs	
8-32	19	2.1	30	3.4	41	4.6
8-36	20	2.3	31	3.5	43	4.9
10-24	27	3.1	43	4.9	60	6.8
10-32	31	3.5	49	5.5	68	7.7
1/4-20	66	7.6	8	10.9	12	16.3
1/4-28	76	8.6	10	13.6	14	19.0
5/16-18	11	15.0	17	23.1	25	34.0
5/16-24	12	16.3	19	25.8	29	34.0
3/8-16	20	27.2	30	40.8	45	61.2
3/8-24	23	31.3	35	47.6	50	68.0
7/16-14	30	40.8	50	68.0	70	95.2
7/16-20	35	47.6	55	74.8	80	108.8
1/2-13	50	68.0	75	102.0	110	149.6
1/2-20	55	74.8	90	122.4	120	163.2
9/16-12	65	88.4	110	149.6	150	204.0
9/16-18	75	102.0	120	163.2	170	231.2
5/8-11	90	122.4	150	204.0	220	299.2
5/8-18	100	136	180	244.8	240	326.4
3/4-10	160	217.6	260	353.6	386	525.0
3/4-16	180	244.8	300	408.0	420	571.2
7/8-9	140	190.4	400	544.0	600	816.0
7/8-14	155	210.8	440	598.4	660	897.6
1-8	220	299.2	580	788.8	900	1,244.0
1-12	240	326.4	640	870.4	1,000	1,360.0

The guides and ruler furnished below are designed to help you select the appropriate hardware.



Nut, M8

Thread Diameter (mm)

Inside Diameter (in) Threads per inch

Nut, 1/2-16



Screw, M8- 1.25 x 25

Thread Diameter (mm) Distance between threads (mm) Body Length (mm)

Body Diameter Threads per inch Body Length (in)

Screw, 1/2- 16 x 2



Standard Hardware Sizing

When a washer or nut is identified as 1/2" (M8), this is the *Nominal size*, meaning the *inside diameter* is 1/2 inch (8mm metric thread diameter); if a second number is present it represents the *threads per inch* (distance between threads).

When bolt or capscrew is identified as 1/2 - 16 x 2" (M8 - 1.25 x 50), this means the *Nominal size*, or body diameter is 1/2 inch (8mm metric thread diameter), the second number, 16, represents the *threads per inch*, (*distance between threads*). The final number is the body length of the bolt or screw, 2 inches (50mm).

NOTES

- These torque values are to be used for all hardware excluding: locknuts, self-tapping screws, thread forming screws, sheet metal screws and socket head setscrews.
- Recommended seating torque values for locknuts:
 - for prevailing torque locknuts - use 65% of grade 5 torques.
 - for flange whizlock nuts and screws - use 135% of grade 5 torques.
- Unless otherwise noted on assembly drawings, all torque values must meet this specification.

Common Hardware Types

Hex Head Capscrew



Washer



Carriage Bolt



Hex Nut

Wrench & Fastener Size Guide

1/4" Bolt or Nut Wrench—7/16"	5/16" Bolt or Nut Wrench—1/2"	3/8" Bolt or Nut Wrench—9/16"	7/16" Bolt or Nut Wrench (Bolt)—5/8" Wrench (Nut)—11/16"	1/2" Bolt or Nut Wrench—3/4"
M6 Bolt or Nut Wrench—10mm	M8 Bolt or Nut Wrench—13mm	M10 Bolt or Nut Wrench—17mm	M12 Bolt or Nut Wrench—19mm	M14 Bolt or Nut Wrench—22mm

VICTA