



Parts Manual

Mfg. No: 2691588-B
VICTA, Commercial 560 Alloy SP, 850

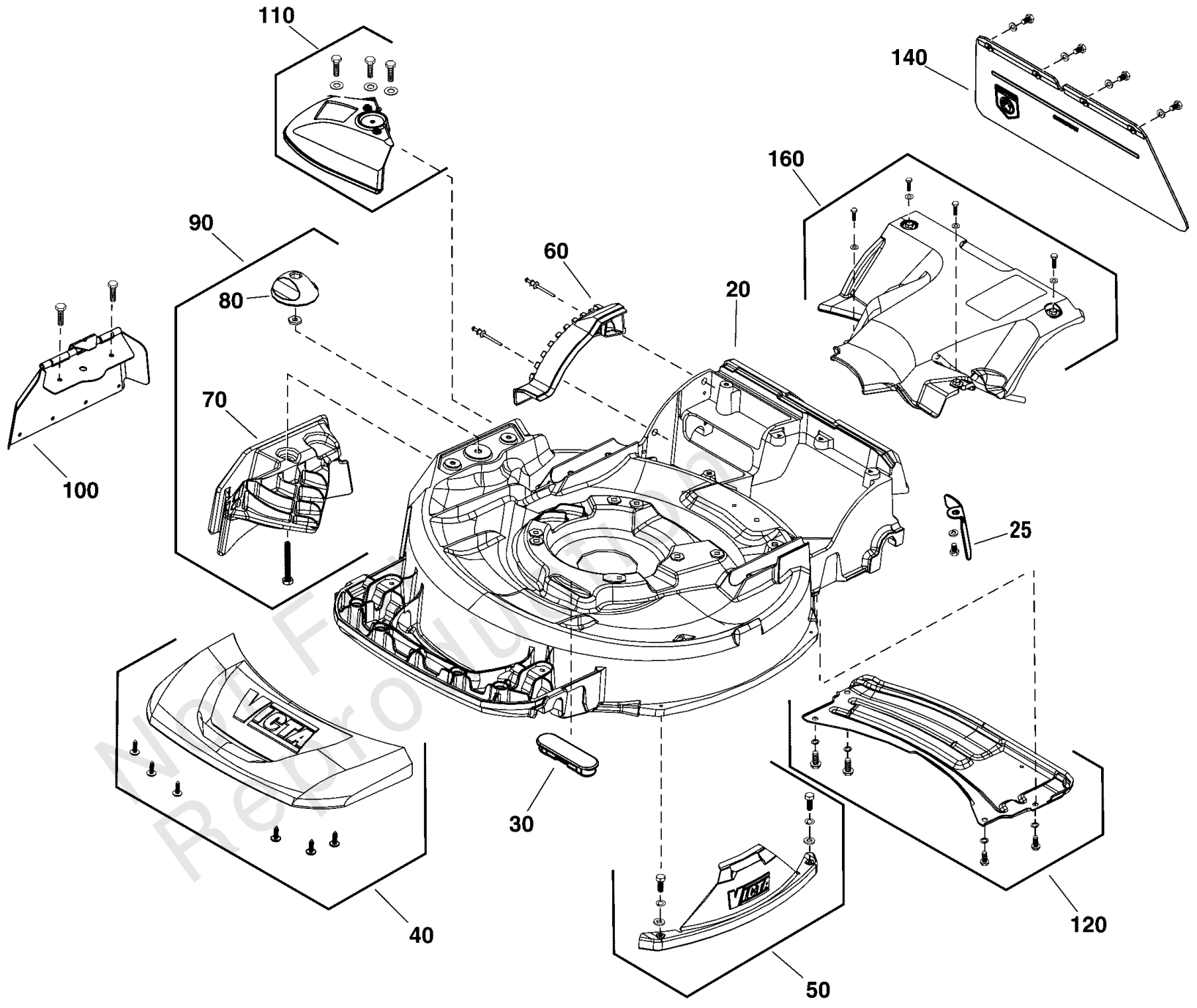
Model Components	Page
Deck Group.....	4
Engine & Blade Group.....	6
Handles & Controls Group.....	8
Wheels Group.....	10
Torque Specification Chart.....	12

Not For
Reproduction

Deck Group

Note: Unless noted otherwise, use the standard torque specifications

Mfg. No: 2691588-B



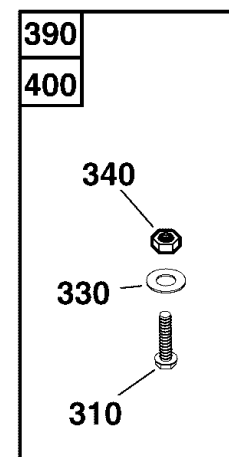
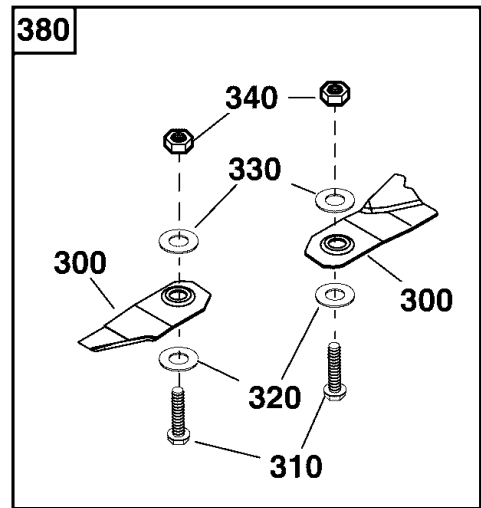
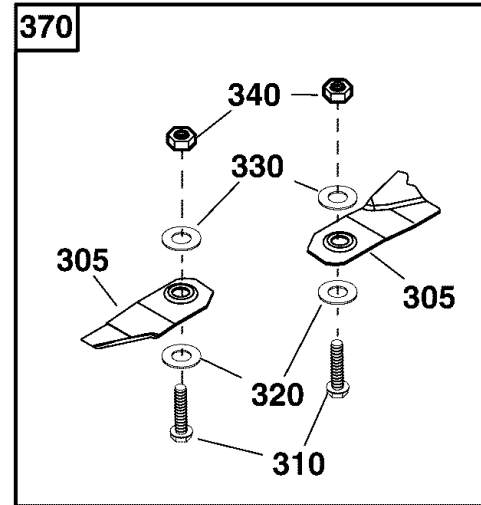
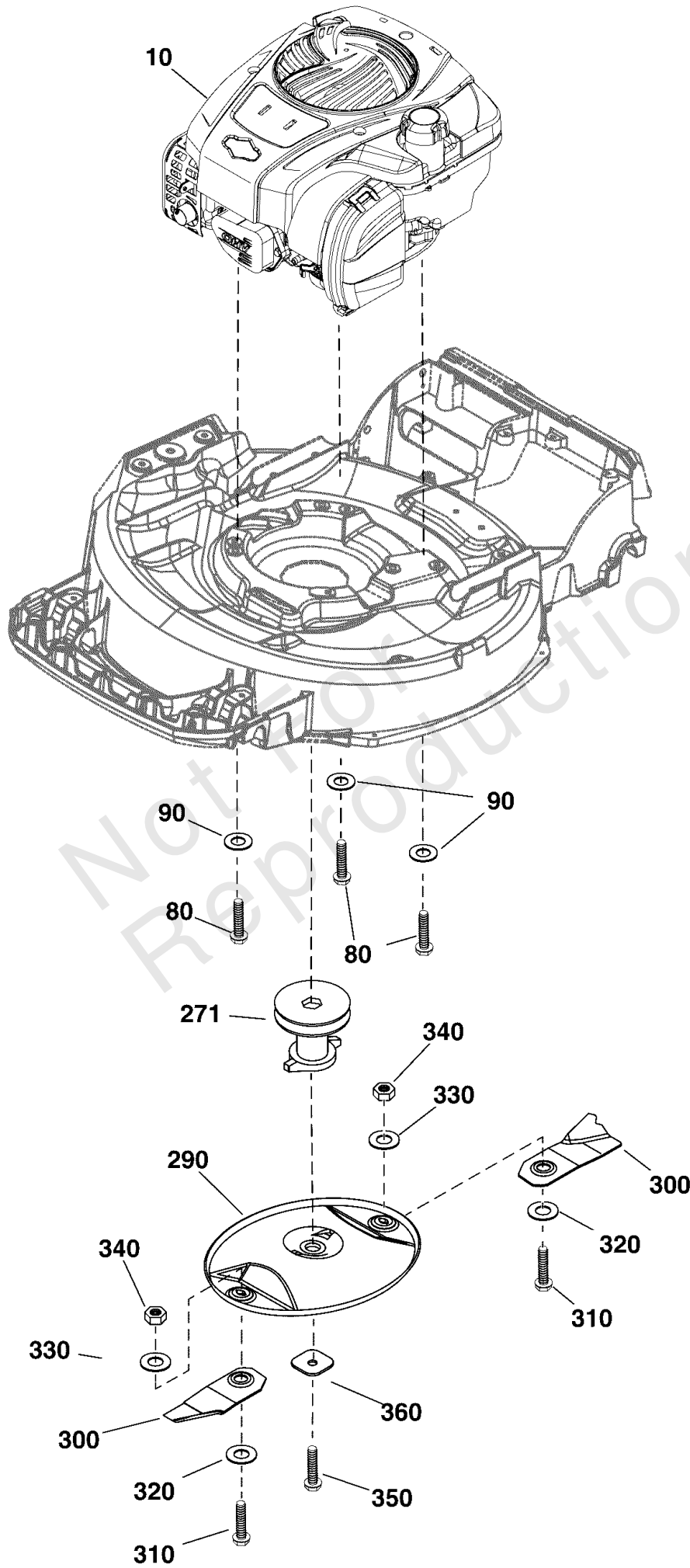
Deck Group

REF NO	PART NO	QTY	DESCRIPTION
20	CH86859AW	1	CHASSIS, 560, Aztec Silver
25	-----	1	GEARBOX CURTAIN -(Not a serviceable part)
30	CH85985A	1	PLUG, 4 Stroke Models Only
40	CH86939AW	1	BUMPER -(Includes screws)
50	CH86897AW	1	WEAR PLATE PACK -(Includes screws & washers)
60	CH86861AW	1	SEGMENT
70	-----	1	MULCHING PLUG -(Not a serviceable part)
80	CH86885AW	1	KNOB, Mulch Plug
90	CH86893AW	1	MULCH PLUG PACK -(Includes Ref. Nos. 70 & 80)
100	CH87226A	1	DISCHARGE FLAP ASSEMBLY
110	CH86895AW	1	CHUTE PACK -(Includes screws & washers)
120	CH86899AW	1	SKID PLATE PACK -(Includes screws & washers)
140	CH88436A	1	REAR FLAP PACK, 560
160	CH86898AW	1	BELT COVER PACK -(Includes screws & washers)

Engine & Blade Group

Note: Unless noted otherwise, use the standard torque specifications

Mfg. No: 2691588-B



Engine & Blade Group

REF NO	PART NO	QTY	DESCRIPTION
10	123P32-0031-H5	1	** ENGINE, Briggs & Stratton 850 Series
80	HA21320D	3	BOLT, Taptite, HW, 3/8 UNC x 30
90	HA22277D	3	WASHER, Engine Mounting
271	EE14476A	1	PULLEY & SLEEVE, Engine, 4-Stroke, 7/8"
290	CA09442G	1	BLADE DISC, Oval
300	-----	2	BLADE, Mower, Lo-Lift
305	CA09507B	2	BLADE, Hi Lift
310	-----	2	BOLT, Blade
320	CA09347A	2	WASHER, Blade Tension
330	HA25276BZ	2	WASHER, Belleville
340	CA09241D	2	NUT, Nylock, 3/8 UNC
350	EE14484B	1	BOLT, Flanged, Blade Disc
360	EN73054B	1	WASHER, Blade Disc
370	CA09276B	1	KIT, Blade & Bolt, Hi-Profile (1 Pair) -(Includes Ref. No. 305, 310, 320, 330 & 340)
380	CA09584B	1	KIT, Blade & Bolt, Lo-Lift (1 Pair) -(Includes Ref. No. 300, 310, 320, 330 & 340)
390	CA09277S	1	KIT, Hardware, Bolt, Washer, Nut (1 Pack) -(Includes Ref. No. 310, 330 & 340)
400	CA09277P	1	KIT, Hardware, Blade, Washer, Nut , Bulk Pack (50 Pairs) -(Includes Ref. No. 310, 330 & 340)

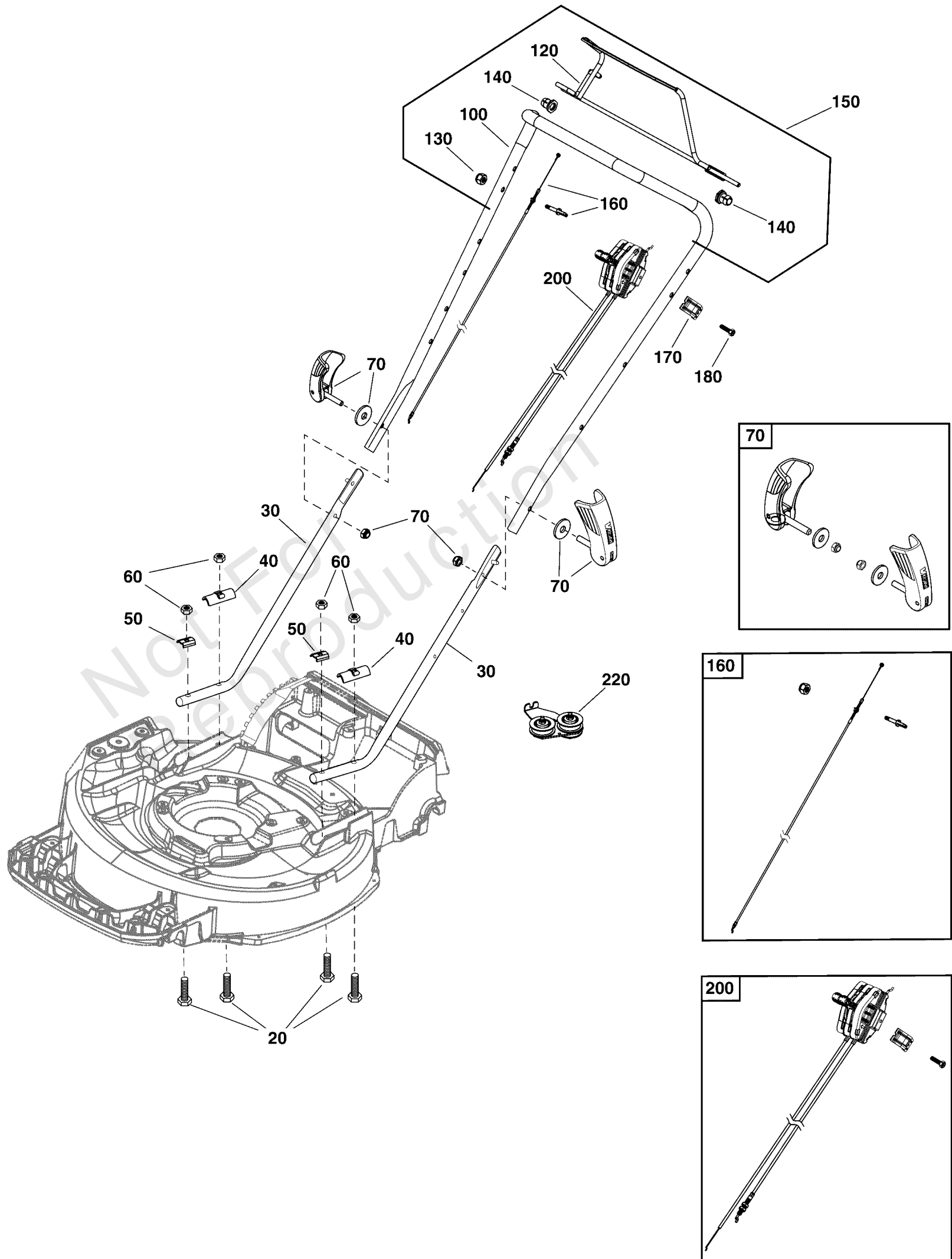
Footnotes:

Note** Engine Style may vary from illustration. To verify your specific engine model, please reference the ID Tag located on your engine. See your local Briggs & Stratton distributor for parts and service.

Handles & Controls Group

Note: Unless noted otherwise, use the standard torque specifications

Mfg. No: 2691588-B



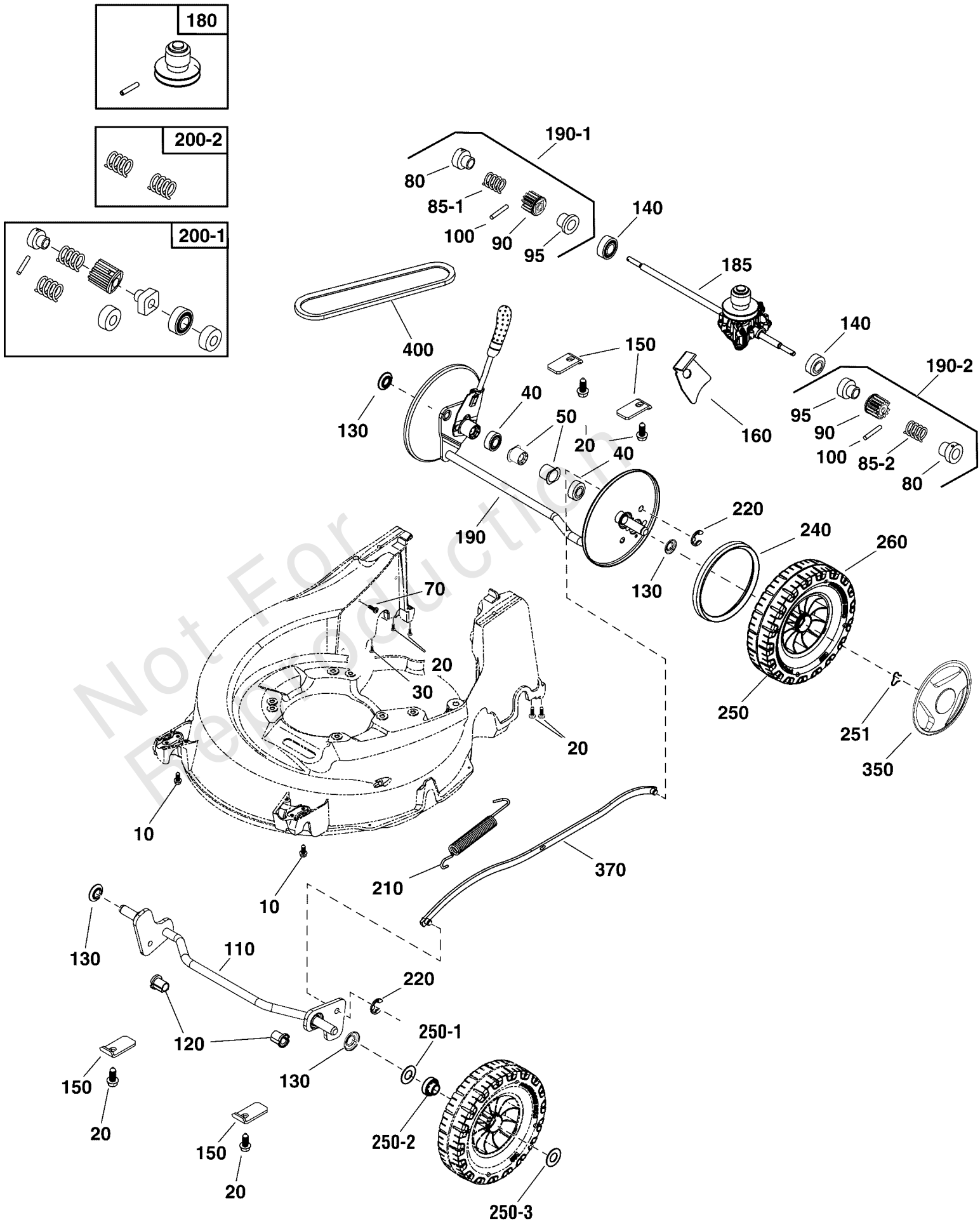
Handles & Controls Group

REF NO	PART NO	QTY	DESCRIPTION
20	HA20492D	4	BOLT, Hex Head, M8 x 65
30	CH87047GW	2	HANDLE, Lower, 560
40	CH80854GZ	2	PLATE, Saddle, Heavy
50	VV17130D	2	PLATE, Saddle
60	-----	4	NUT, Nylock, M8
70	CH88061P	1	WINGED LOCKING LEVER PACK V2 -(2 Sets Included, Kit includes Lever, Washer & Nut)
100	CH87048G	1	HANDLE, Upper, 560 S/P
120	CH88439A	1	BAIL ARM ASSEMBLY
130	HA24982D	1	NUT, Nylock, M6
140	CH86788A	2	SLEEVE, Bearing
150	80079136	1	UPPER HANDLE ASSEMBLY -(Includes Ref. Nos. 100, 120, 130, 140 & 160)
160	CH87424A	1	CABLE, Drive Clutch
170	-----	1	CLAMP, 22mm -(Not a serviceable part)
180	-----	1	SCREW, M5 x 18 -(Not a serviceable part)
200	TC05064B	1	THROTTLE, Pro Control -(Includes Ref. Nos. 170 & 180)
220	CH86896AW	1	TENSIONER MOUNT PACK 560

Wheels Group

Note: Unless noted otherwise, use the standard torque specifications

Mfg. No: 2691588-B



Wheels Group

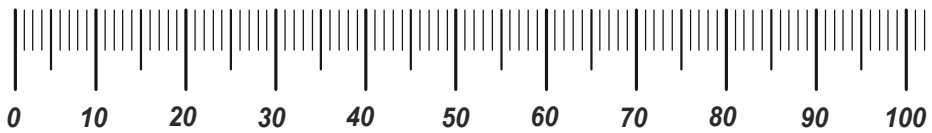
REF NO	PART NO	QTY	DESCRIPTION
10	-----	4	SCREW, Hex Flange, M5 x 16 -(Not a serviceable part.)
20	-----	6	SCREW, Pan Torx Trilobe, M6 x 19 -(Not a serviceable part.)
30	-----	1	* SCREW, Pan Torx, Self Tap, ST4.2 x 16 -(Not a serviceable part.)
40	CH84142A	2	RING, Sealing
50	CH84185U	2	BUSHING, Rear Axle
70	-----	1	* SCREW, Pan Torx, Self Tap, ST4.2 x 10 -(Not a serviceable part.)
80	-----	2	SLEEVE, Fixed
85-1	-----	1	SPRING, RH, Black -(Not a serviceable part.)
85-2	-----	1	SPRING, LH, Yellow -(Not a serviceable part.)
90	-----	1	DRIVE GEAR -(Not a serviceable part.)
95	-----	1	SLEEVE, Drive -(Not a serviceable part.)
100	-----	2	PIN, Roll 1/8 x 3/4 SP -(Not a serviceable part.)
110	CH86881AW	1	AXLE, Front
120	CH86276A	2	BUSHING, Front Axle
130	CH81445A	4	DUST SEAL
140	80084367	2	BEARING -(Replaces Part Nos. HA25463A)
150	CH88275D	4	RETAINING PLATE, Axle
160	CH87420A	1	BRACKET, Gearbox 560
180	80080431	1	KIT, Variable Speed
185	CH87296A	1	GEARBOX GT-MC600
190	CH86938AW	1	AXLE, Rear
190-1	-----	1	GEAR, Over - Run Clutch, RH Black -(Not a serviceable part.)
190-2	-----	1	GEAR, Over - Run Clutch, RH Yellow -(Not a serviceable part.)
200-1	CH86816S	1	OVER RUN CLUTCH KIT
200-2	CH86823S	1	OVER RUN SPRING KIT
210	CH85943A	1	SPRING
220	HA25131D	2	E-CLIP
240	CH82847A	2	SEAL, Drive Wheel
250	CH86334A	4	WHEEL, Pro, 8"
260	CH86333A	2	WHEEL, Pro, 8", REAR
250-1	-----	2	WASHER, Wheel, Front -(Not a serviceable part.)
250-2	-----	2	BUSHING, Wheel, Front -(Not a serviceable part.)
250-3	-----	2	WASHER, Wheel, Front
251	CH86298A	4	CAPTIVATED CLIP, Wheel
350	CH86112A	4	HUBCAP, Black
370	CH86862AW	1	CONLINK
400	80085135	1	V-BELT, 6736 Power Rated -(Replaces Part Nos. CH85666A)

Hardware Identification & Torque Specifications

Torque Specification Chart								
FOR STANDARD METRIC MACHINE HARDWARE (Tolerance ± 20%)								
Property Class	5.6		8.8		10.9		12.9	
	Class 5.6		Class 8.8		Class 10.9		Class 12.9	
Size Of Hardware	in/lbs	Nm.	in/lbs	Nm.	in/lbs	Nm.	in/lbs	Nm.
	ft/lbs		ft/lbs		ft/lbs		ft/lbs	
M3	5.88	.56	13.44	1.28	19.2	1.80	22.92	2.15
M4	13.44	1.28	30.72	2.90	43.44	4.10	52.56	4.95
M5	26.4	2.50	60.96	5.75	5.97	8.10	7.15	9.7
M6	44.64	4.3	7.3	9.9	10.3	14	12.1	16.5
M7	5.2	7.1	12.1	16.5	16.9	23	19.9	27
M8	7.7	10.5	17.7	24	25	34	29	40
M10	15	21	35	48	50	67	59	81
M12	26	36	61	83	86.2	117	103	140
M14	42	58	101	132	136	185	162	220
M16	64	88	147	200	210	285	250	340
M18	89	121	202	275	287	390	346	470
M20	126	171	290	390	405	550	486	660
M22	169	230	390	530	559	745	656	890
M24	217	295	497	375	708	960	840	1140
M27	320	435	733	995	1032	1400	1239	1680
M30	435	590	995	1350	1401	1900	1681	2280
M33	590	800	1349	1830	1902	2580	2278	3090
M36	759	1030	1740	2360	2441	3310	2935	3980
M39	988	1340	2249	3050	3163	4290	3798	5150

Torque Specification Chart						
FOR STANDARD MACHINE HARDWARE (Tolerance ± 20%)						
Hardware Grade	No Marks		SAE Grade 5		SAE Grade 8	
	SAE Grade 2		SAE Grade 5		SAE Grade 8	
Size Of Hardware	in/lbs	Nm.	in/lbs	Nm.	in/lbs	Nm.
	ft/lbs		ft/lbs		ft/lbs	
8-32	19	2.1	30	3.4	41	4.6
8-36	20	2.3	31	3.5	43	4.9
10-24	27	3.1	43	4.9	60	6.8
10-32	31	3.5	49	5.5	68	7.7
1/4-20	66	7.6	8	10.9	12	16.3
1/4-28	76	8.6	10	13.6	14	19.0
5/16-18	11	15.0	17	23.1	25	34.0
5/16-24	12	16.3	19	25.8	29	34.0
3/8-16	20	27.2	30	40.8	45	61.2
3/8-24	23	31.3	35	47.6	50	68.0
7/16-14	30	40.8	50	68.0	70	95.2
7/16-20	35	47.6	55	74.8	80	108.8
1/2-13	50	68.0	75	102.0	110	149.6
1/2-20	55	74.8	90	122.4	120	163.2
9/16-12	65	88.4	110	149.6	150	204.0
9/16-18	75	102.0	120	163.2	170	231.2
5/8-11	90	122.4	150	204.0	220	299.2
5/8-18	100	136	180	244.8	240	326.4
3/4-10	160	217.6	260	353.6	386	525.0
3/4-16	180	244.8	300	408.0	420	571.2
7/8-9	140	190.4	400	544.0	600	816.0
7/8-14	155	210.8	440	598.4	660	897.6
1-8	220	299.2	580	788.8	900	1,244.0
1-12	240	326.4	640	870.4	1,000	1,360.0

The guides and ruler furnished below are designed to help you select the appropriate hardware.

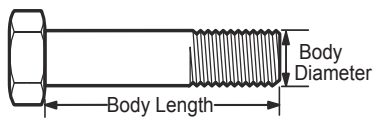


Nut, M8

Thread Diameter (mm)

Inside Diameter (in) Threads per inch

Nut, 1/2-16

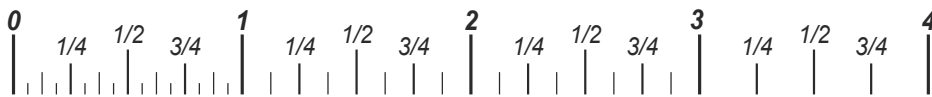


Screw, M8- 1.25 x 25

Thread Diameter (mm) Distance between threads (mm) Body Length (mm)

Body Diameter Threads per inch Body Length (in)

Screw, 1/2- 16 x 2



Standard Hardware Sizing

When a washer or nut is identified as 1/2" (M8), this is the *Nominal size*, meaning the *inside diameter* is 1/2 inch (8mm metric thread diameter); if a second number is present it represents the *threads per inch* (distance between threads).

When bolt or capscrew is identified as 1/2 - 16 x 2" (M8 - 1.25 x 50), this means the *Nominal size*, or body diameter is 1/2 inch (8mm metric thread diameter), the second number, 16, represents the *threads per inch*, (*distance between threads*). The final number is the body length of the bolt or screw, 2 inches (50mm).

NOTES

- These torque values are to be used for all hardware excluding: locknuts, self-tapping screws, thread forming screws, sheet metal screws and socket head setscrews.
- Recommended seating torque values for locknuts:
 - for prevailing torque locknuts - use 65% of grade 5 torques.
 - for flange whizlock nuts and screws - use 135% of grade 5 torques.
- Unless otherwise noted on assembly drawings, all torque values must meet this specification.

Common Hardware Types

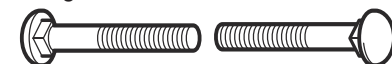
Hex Head Capscrew



Washer



Carriage Bolt



Hex Nut

Wrench & Fastener Size Guide

1/4" Bolt or Nut Wrench—7/16"	5/16" Bolt or Nut Wrench—1/2"	3/8" Bolt or Nut Wrench—9/16"	7/16" Bolt or Nut Wrench (Bolt)—5/8" Wrench (Nut)—11/16"	1/2" Bolt or Nut Wrench—3/4"
M6 Bolt or Nut Wrench—10mm	M8 Bolt or Nut Wrench—13mm	M10 Bolt or Nut Wrench—17mm	M12 Bolt or Nut Wrench—19mm	M14 Bolt or Nut Wrench—22mm

VICTA