

Parts Manual

Mfg. No: 1696796-00
42" Mower Deck

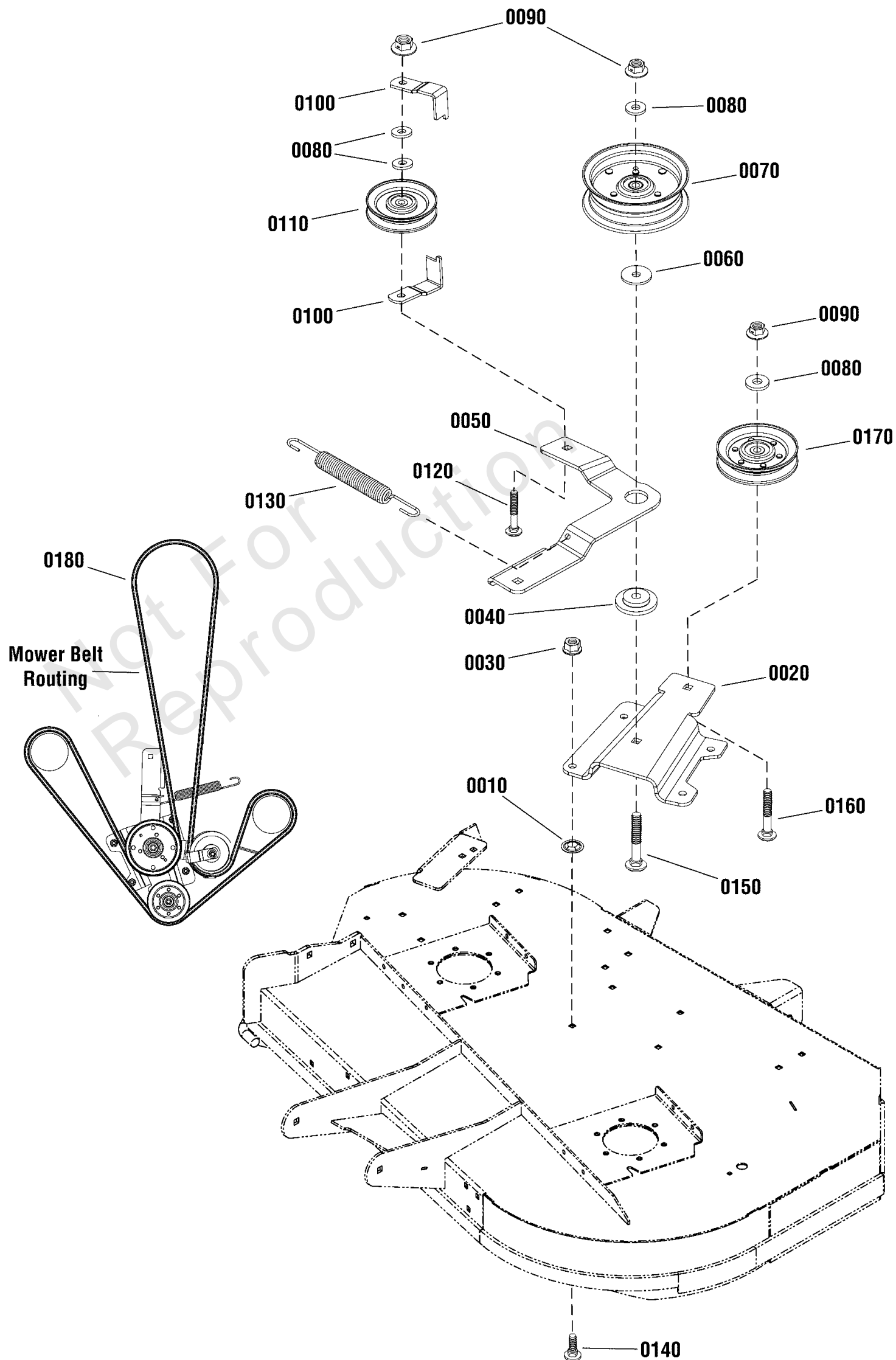
Model Components	Page
42" Mower Deck - Clutch Group (2991669).....	4
42" Mower Deck - Housing, Arbor & Blade Group (2991668).....	6
42" Mower Deck - Support Group.....	8
Torque Specification Chart.....	10

Not For
Reproduction

42" Mower Deck - Clutch Group (2991669)

Note: Unless noted otherwise, use the standard torque specifications

Mfg. No: 1696796-00



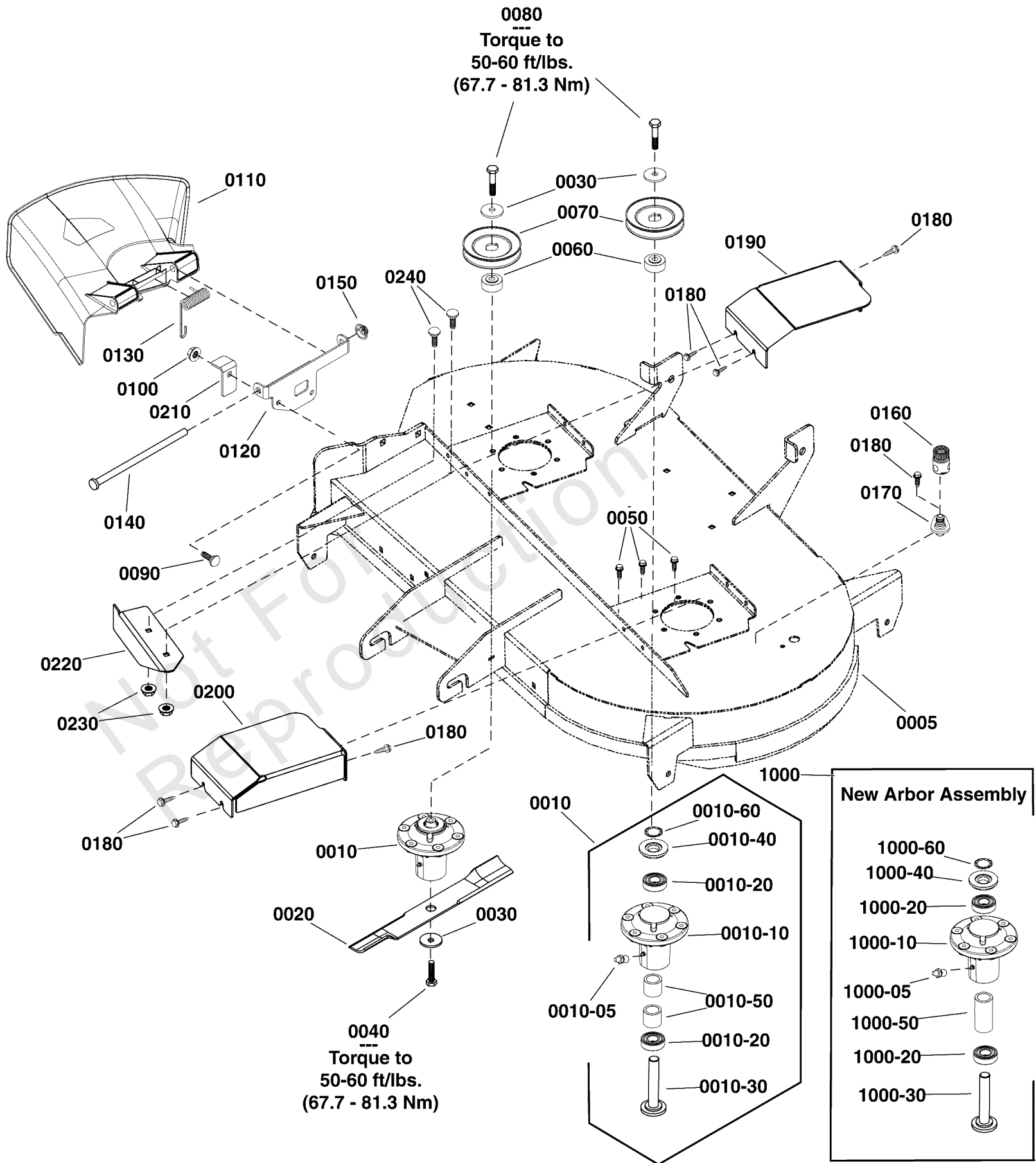
42" Mower Deck - Clutch Group (2991669)

REF NO	PART NO	QTY	DESCRIPTION
0010	703297	4	RETAINER, GR5, 5/16
0020	1758542BMYP	1	BRACKET, Idler
0030	703115	4	NUT
0040	706128	1	SPACER, IDLER
0050	1759359BMYP	1	ARM, Idler
0060	5025305SM	1	WASHER, .41 X 1.75 X
0070	1757894YP	1	PULLEY, Flat Idler, 4.5"
0080	704128	4	WASHER
0090	703893	3	NUT, CNTR LCK, 3/8-16
0100	706131	2	GUARD, Spring
0110	7018574SM	1	IDLER, Flat, 4 1/8
0120	7900009SM	1	RHSSNB, 3/8-16 X 2-1/
0130	1734316SM	1	SPRING, Extension, 7.88 LG
0140	703225	4	BOLT
0150	1960615SM	1	BOLT-RD HD SQ NK 3/8
0160	703858	1	BOLT, 3/8-16X1.75
0170	885937YP	1	PULLEY, Idler 4.00
0180	1758984YP	1	BELT, Aramid

42" Mower Deck - Housing, Arbor & Blade Group (2991668)

Note: Unless noted otherwise, use the standard torque specifications

Mfg. No: 1696796-00



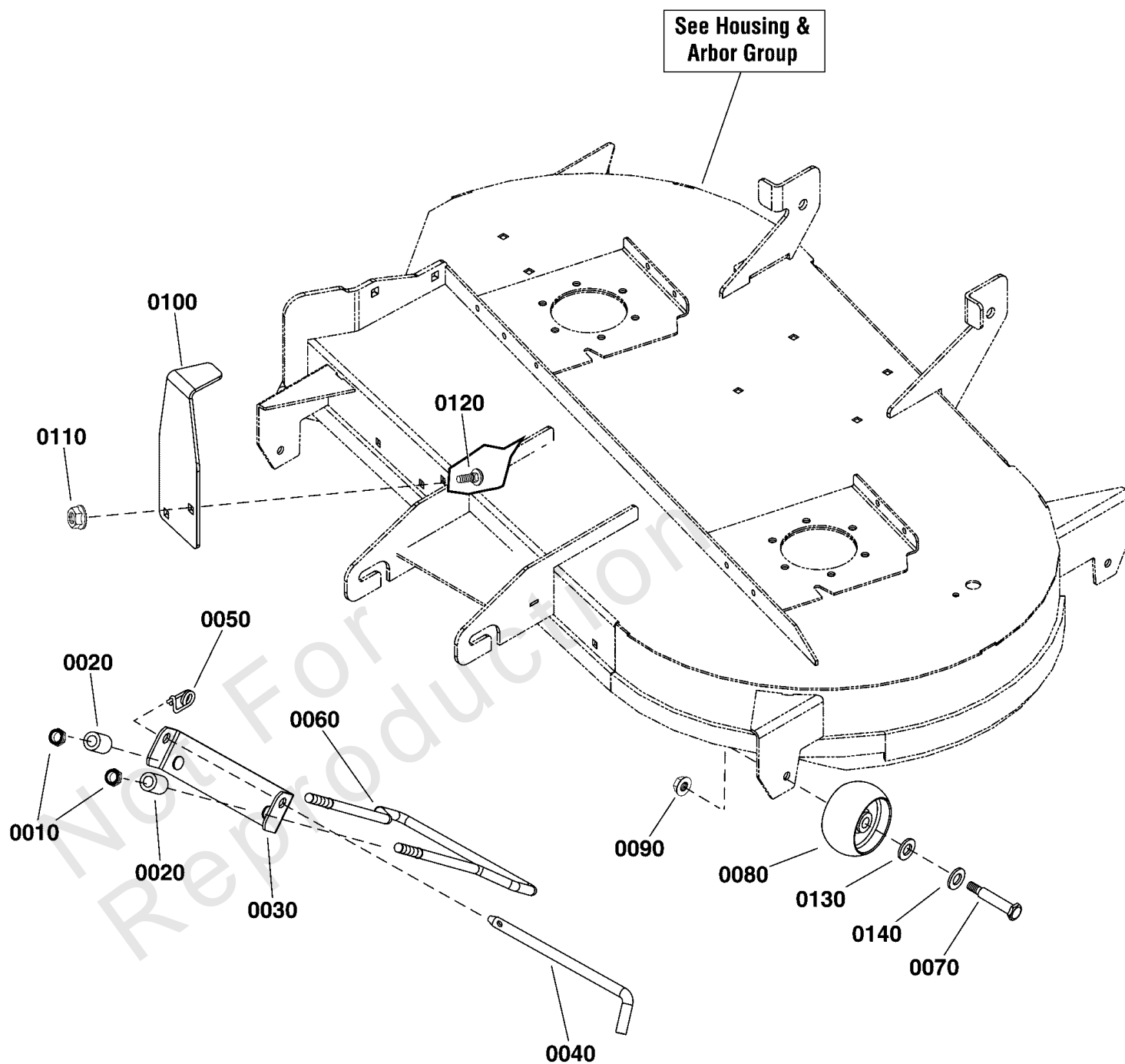
42" Mower Deck - Housing, Arbor & Blade Group (2991668)

REF NO	PART NO	QTY	DESCRIPTION
0005	1687831YP	1	HOUSING, Mower Deck, 42" Red
0010	84001645	3	ARBOR ASSEMBLY -(Replaced by Ref. Nos. 1000, this arbor assembly is an exact replacement)
0010-05	1704314SM	1	LUBE FITTING, .250 DR
0010-10	1755437YP	1	HOUSING, w/Lube Fitting
0010-20	1735399YP	2	BEARING, Ball, 20mm
0010-30	1760276YP	1	SHAFT-SPINDLE -(Replaced by Ref. Nos. 1000-30, this spindle shaft is an exact replacement)
0010-40	1735323YP	2	SHIELD, Arbor
0010-50	1735328YP	2	SPACER, Bearing -(Replaced by Ref. Nos. 1000-50, this spacer is an exact replacement)
0010-60	1960766YP	2	RING, SELF LOCKING
1000	84003173	3	ARBOR ASSEMBLY
1000-05	1704314SM	1	LUBE FITTING, .250 DR
1000-10	84003653	1	HOUSING ASSEMBLY
1000-20	1735399YP	2	BEARING, Ball, 20mm
1000-30	84003170	1	SHAFT, SPINDLE
1000-40	84003166	1	COVER, ARBOR
1000-50	84003167	1	SPACER, BEARING
1000-60	1960766YP	1	RING, SELF LOCKING
0020	1758878BMYP	2	BLADE, 21.31" Long
0030	1656916SM	4	WASHER, SPRING 0.475I
0040	1920676SM	2	CAPSCREW, Hex Head, 7/16-14 X 1
0050	704146	12	SCREW, HEX, 5/16-18X1
0060	1736445YP	2	SPACER, Pulley
0070	1737835YP	2	PULLEY, 4.50
0080	705424	2	CAPSCREW, Hex Head, 7/16-14 X 1 3/4
0090	703815	2	BOLT, RD SQ 3/8-16X1
0100	703793	2	LOCKNUT
0110	7104733YP	1	CHUTE, SIDE DISCHARGE
0120	1758982BMYP	1	BRACKET, Deflector
0130	7035813SM	1	SPRING, TORSION, SIDE
0140	7104640YP	1	ROD, Deflector
0150	703179	1	PUSHNUT, CAP TYPE
0160	1756246YP	1	CONNECTOR, Washout Port
0170	1756247YP	1	ADAPTER, Washout Port
0180	703235	7	SCREW, 5/16-18 X 3/4
0190	1758991BMYP	1	COVER, Pulley, RH
0200	1758992BMYP	1	COVER, Pulley, LH
0210	1758593BMYP	1	PROP, DEFLECTOR
0220	1758581BMYP	1	BAFFLE, Pinchoff
0230	703115	2	NUT
0240	703225	2	BOLT

42" Mower Deck - Support Group

Note: Unless noted otherwise, use the standard torque specifications

Mfg. No: 1696796-00



42" Mower Deck - Support Group

REF NO	PART NO	QTY	DESCRIPTION
0010	1960379SM	2	NUT, Hex Lock, 1/2-13
0020	1679166SM	2	SPACER, 1/2 x 7/8 x 1 3/16
0030	1730221ASM	1	HANGER, Front
0040	1731414SM	1	ROD, Latch, 9"
0050	703852	1	PIN, 5/16 X 0.375
0060	1730097SM	1	ROD, Bail, 13"
0070	2108765SM	4	BOLT-WHEEL 3/8-16X2.7
0080	1714760SM	4	GAUGE WHEEL
0090	703158	4	NUT, Hex Flange, 3/8-16
0100	1758555BMYP	1	UPSTOP
0110	703409	2	NUT, 5/16-18, GR5
0120	703185	2	BOLT, Round Head, Short Square Neck
0130	703853	4	WASHER, 0.516IDX1OD
0140	0020X3MA	4	WASHER,SPRING .52X.99

Not For Reproduction

Hardware Identification & Torque Specifications

Torque Specification Chart								
FOR STANDARD METRIC MACHINE HARDWARE (Tolerance ± 20%)								
Property Class	5.6		8.8		10.9		12.9	
	Class 5.6		Class 8.8		Class 10.9		Class 12.9	
Size Of Hardware	in/lbs	Nm.	in/lbs	Nm.	in/lbs	Nm.	in/lbs	Nm.
	ft/lbs		ft/lbs		ft/lbs		ft/lbs	
M3	5.88	.56	13.44	1.28	19.2	1.80	22.92	2.15
M4	13.44	1.28	30.72	2.90	43.44	4.10	52.56	4.95
M5	26.4	2.50	60.96	5.75	5.97	8.10	7.15	9.7
M6	44.64	4.3	7.3	9.9	10.3	14	12.1	16.5
M7	5.2	7.1	12.1	16.5	16.9	23	19.9	27
M8	7.7	10.5	17.7	24	25	34	29	40
M10	15	21	35	48	50	67	59	81
M12	26	36	61	83	86.2	117	103	140
M14	42	58	101	132	136	185	162	220
M16	64	88	147	200	210	285	250	340
M18	89	121	202	275	287	390	346	470
M20	126	171	290	390	405	550	486	660
M22	169	230	390	530	559	745	656	890
M24	217	295	497	375	708	960	840	1140
M27	320	435	733	995	1032	1400	1239	1680
M30	435	590	995	1350	1401	1900	1681	2280
M33	590	800	1349	1830	1902	2580	2278	3090
M36	759	1030	1740	2360	2441	3310	2935	3980
M39	988	1340	2249	3050	3163	4290	3798	5150

Torque Specification Chart						
FOR STANDARD MACHINE HARDWARE (Tolerance ± 20%)						
Hardware Grade	No Marks		SAE Grade 5		SAE Grade 8	
	SAE Grade 2		SAE Grade 5		SAE Grade 8	
Size Of Hardware	in/lbs	Nm.	in/lbs	Nm.	in/lbs	Nm.
	ft/lbs		ft/lbs		ft/lbs	
8-32	19	2.1	30	3.4	41	4.6
8-36	20	2.3	31	3.5	43	4.9
10-24	27	3.1	43	4.9	60	6.8
10-32	31	3.5	49	5.5	68	7.7
1/4-20	66	7.6	8	10.9	12	16.3
1/4-28	76	8.6	10	13.6	14	19.0
5/16-18	11	15.0	17	23.1	25	34.0
5/16-24	12	16.3	19	25.8	29	34.0
3/8-16	20	27.2	30	40.8	45	61.2
3/8-24	23	31.3	35	47.6	50	68.0
7/16-14	30	40.8	50	68.0	70	95.2
7/16-20	35	47.6	55	74.8	80	108.8
1/2-13	50	68.0	75	102.0	110	149.6
1/2-20	55	74.8	90	122.4	120	163.2
9/16-12	65	88.4	110	149.6	150	204.0
9/16-18	75	102.0	120	163.2	170	231.2
5/8-11	90	122.4	150	204.0	220	299.2
5/8-18	100	136	180	244.8	240	326.4
3/4-10	160	217.6	260	353.6	386	525.0
3/4-16	180	244.8	300	408.0	420	571.2
7/8-9	140	190.4	400	544.0	600	816.0
7/8-14	155	210.8	440	598.4	660	897.6
1-8	220	299.2	580	788.8	900	1,244.0
1-12	240	326.4	640	870.4	1,000	1,360.0

The guides and ruler furnished below are designed to help you select the appropriate hardware.



Nut, M8

Thread Diameter (mm)

Inside Diameter (in) Threads per inch

Nut, 1/2-16



Screw, M8- 1.25 x 25

Thread Diameter (mm) Distance between threads (mm) Body Length (mm)

Body Diameter Threads per inch Body Length (in)

Screw, 1/2- 16 x 2



Standard Hardware Sizing

When a washer or nut is identified as 1/2" (M8), this is the *Nominal size*, meaning the *inside diameter* is 1/2 inch (8mm metric thread diameter); if a second number is present it represents the *threads per inch* (distance between threads).

When bolt or capscrew is identified as 1/2 - 16 x 2" (M8 - 1.25 x 50), this means the *Nominal size*, or body diameter is 1/2 inch (8mm metric thread diameter), the second number, 16, represents the *threads per inch*, (*distance between threads*). The final number is the body length of the bolt or screw, 2 inches (50mm).

NOTES

- These torque values are to be used for all hardware excluding: locknuts, self-tapping screws, thread forming screws, sheet metal screws and socket head setscrews.
- Recommended seating torque values for locknuts:
 - for prevailing torque locknuts - use 65% of grade 5 torques.
 - for flange whizlock nuts and screws - use 135% of grade 5 torques.
- Unless otherwise noted on assembly drawings, all torque values must meet this specification.

Common Hardware Types

Hex Head Capscrew



Washer



Carriage Bolt



Hex Nut

Wrench & Fastener Size Guide

1/4" Bolt or Nut Wrench—7/16"	5/16" Bolt or Nut Wrench—1/2"	3/8" Bolt or Nut Wrench—9/16"	7/16" Bolt or Nut Wrench (Bolt)—5/8" Wrench (Nut)—11/16"	1/2" Bolt or Nut Wrench—3/4"
M6 Bolt or Nut Wrench—10mm	M8 Bolt or Nut Wrench—13mm	M10 Bolt or Nut Wrench—17mm	M12 Bolt or Nut Wrench—19mm	M14 Bolt or Nut Wrench—22mm

