

# **VICTA**

Reproduction

## **Operator's Manual Victa 18V Push Button Start 18" Domestic Lawnmowers**



**WARNING!** Read this manual before operating your Victa Lawnmower.



# IMPORTANT INFORMATION

# CONTENTS & SYMBOLS



## Engine Oil

The following warning labels are attached to your mower on purchase. Please read labels before discarding.



### 4 Stroke Label

Briggs & Stratton, Honda:-  
Engine must have SAE 30 Oil added to the Engine Sump before starting. Refer to the Engine Manual for oil filling information.

Please use the engine's dipstick to ensure correct oil fill level.

Failure to add oil to your engine before attempting to start it will damage the engine and void the Engine Warranty.



## Safety Marking and Symbols



Warning!



Be careful of objects being thrown out!



Read the directions for use before operating the machine.



Read the manual before carrying out any maintenance work.



Wear safety goggles, a helmet and ear protection.



Wear sturdy, nonslip footwear.



Wear safety gloves.



Protect the machine from rain and damp.

Refer to the Briggs & Stratton 18V Battery & Charger instruction manual for further information relating to battery & charger use, servicing, storage and safety.

## Table of Contents



### Important Notes

1

Unit Details



### Safety & Handling

2

Safety Instructions  
Hazards  
Personal Safety Equipment



### Product Features

5

Features



### Assembly Procedures

6

Assembling Push button Start Module  
Grasscatcher  
Installing and removing Battery



### Operating Instructions

11

Starting & Stopping  
Grasscatcher Fitting  
Mulching Plug



### Maintenance & Care

13

Cleaning  
Maintenance Chart  
Blade Replaceme



### Troubleshooting

16

Troubleshooting



### Notes

17

Notes



## IMPORTANT NOTES

Congratulations on your purchase of a Victa lawnmower. This instruction manual will aid in the assembly, operation and maintenance of your new lawnmower.

Please read this manual carefully to ensure safety and the long life of your product.

Please read the Warranty leaflet carefully.

Keep this operators manual in a safe place for future reference, or if service is required on your unit.



Do not operate the unit before reading this manual.

Do not operate before reading the 'Engine Manual'.



Refer to the Briggs & Stratton 18V Battery & Charger instruction manual for further information relating to battery & charger use, servicing, storage and safety.

## SAFETY & HANDLING

### Safety Instructions

#### Transporting the mower

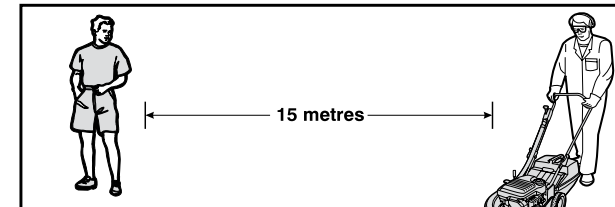
- Turn the engine off, by moving the throttle lever to the 'STOP' position and switching the fuel tap off (where fitted).
- Disconnect the spark plug lead and wedge it well away from the spark plug.
- Do not transport the mower in a vehicle if there is fuel in the fuel tank.
- Remove the battery and starting key, where fitted (In-Start models only).

#### Before using the mower

- Do not allow children, or people unfamiliar with these instructions, to use the mower.
- Ensure that the blade assembly is not worn or damaged. Always replace worn or damaged blades and bolts in sets to preserve correct balance. Damaged or worn blades and bolts are major hazards. Use genuine Victa spare parts only.
- Please note: blades may be tucked under blade disc for safety and transport reasons before use. Once the engine is started they will relocate themselves for cutting.
- Check all fasteners regularly. Always ensure the mower is in a safe operating condition. Use genuine spare parts only.
- Check for grass build up around the engine and muffler which may cause overheating and/or a fire hazard.
- For 4-stroke engines, SAE 30 oil must be placed in engine sump before starting the engine. Please refer to Engine Owner's Manual, for filling volume and method. Failure to do so will cause engine damage and will void engine warranty.
- Do not start the engine unless the rear flap and/or grasscatcher are securely in position.
- Know the mower controls. Learn how to stop the engine quickly in an emergency by moving the throttle to the 'STOP' position or releasing the brake bale arm on models fitted with presence control.

#### Operating the mower

- Do not mow while people, especially children, or pets are in the vicinity of the mower or within the mowing area. Ensure that bystanders are a minimum of 15 metres away.



- Do not mow in bare feet or open shoes. Wear long trousers, heavy footwear, eye and ear protection.



## Safety Instructions cont'd

- Make sure the lawn is clear of sticks, stones, bones, wire and debris before mowing. These could be thrown by the blades and cause injury or damage.
- Start the engine carefully with feet well clear of blades. Do not tilt the mower when starting the engine.
- Stop the engine whenever you leave the mower, even for a moment.
- Mow only in good daylight.
- Keep hands and feet away from rotating parts beneath mower when engine is running.
- Do not over speed the engine or alter the governor settings. Excessive engine speed is dangerous and shortens mower life.
- Never lift, carry or tilt the mower when the engine is running.
- Stop the engine before pushing the mower across gravel, paths or roads. Stop the engine before the mower leaves the lawn.
- Stop the engine when emptying the grasscatcher.
- Stop the engine before adjusting the cutting height.
- Mow across the face of a slope, never up or down. Use extreme caution when changing direction on a slope. Do not mow on excessively steep slopes.
- Never mow by pulling the mower towards you. You may slip and pull the mower on top of your feet. Never mow grass while walking backwards.
- Walk with the mower, never run.
- The safety distance determined by the guiding handles must be maintained at all times.
- At the conclusion of mowing, always turn the mower off using the throttle lever then turn fuel tap off (where fitted). To stop the mower on models with presence control, release the brake bale arm.
- Do not operate the mower in confined spaces where exhaust fumes (carbon monoxide) can collect.
- Stop the engine and disconnect spark plug wire before clearing blockages, checking, or working on the mower.
- If you strike an obstruction, stop the engine, disconnect spark plug and check the blades for damage.
- Never use the mower unless the grasscatcher and/or the rear flap are correctly assembled and fitted.
- Never use an electrically powered mower in the rain or when grass is wet.

### Maintaining the mower

- If the mower begins to vibrate abnormally, or if it strikes a foreign object - STOP the engine. Disconnect the spark plug lead from the spark plug and carefully wedge it well away from the spark plug. Inspect the mower and blades for any damage.

## Safety Instructions cont'd

- Victa recommends that all maintenance, repair and inspection work be carried out by a Victa Authorised Service Centre.



- Store the mower in a well ventilated area, away from any naked flames such as those found in hot water heaters.

### Refuelling the mower

- Refuel the mower outdoors only.
- Do not smoke while operating or refuelling the mower. Never add fuel or remove the fuel cap while the engine is running or hot. If fuel is spilt, do not start the engine. Move the mower away from the area of the spill. Do not create any source of ignition until fuel vapours have dissipated.
- Store fuel in a cool place and in a container specifically designed for the purpose. Victa supplies a 5 litre fuel can as an optional extra. Plastic containers are unsuitable, except those specifically designed to hold fuel.

## Hazards

The following safety precautions must be strictly observed to avoid the risk of damage or personal injury.

- Do not smoke while operating or refuelling the mower. Never add fuel or remove the fuel cap while the engine is running or hot. If fuel is spilt, do not start the engine. Move the mower away from the area of the spill. Do not create any source of ignition until the fuel vapours have dissipated.
- Check all fasteners regularly. Always ensure that the mower is in safe operating condition. Use genuine spare parts only.
- Do not operate the mower in confined spaces where exhaust fumes (carbon monoxide) can collect.
- Stop the engine whenever you leave the mower, even if only for a moment.
- Stop the engine when emptying the grasscatcher. Never try to clear grass from inside the mower while the engine is running.
- Never lift, carry or tilt the mower when the engine is running.
- Bystanders must be at least 15 metres away during operation of the mower, as rocks and other materials may be thrown at high velocities. Switch the unit off immediately if approached.
- Never use the mower unless the grasscatcher and/or the rear flap are correctly assembled and fitted.

## Personal Protective Equipment

Recommended personal protection equipment to wear when working with your lawnmower:



A set of ear muffs.



A pair of safety boots.



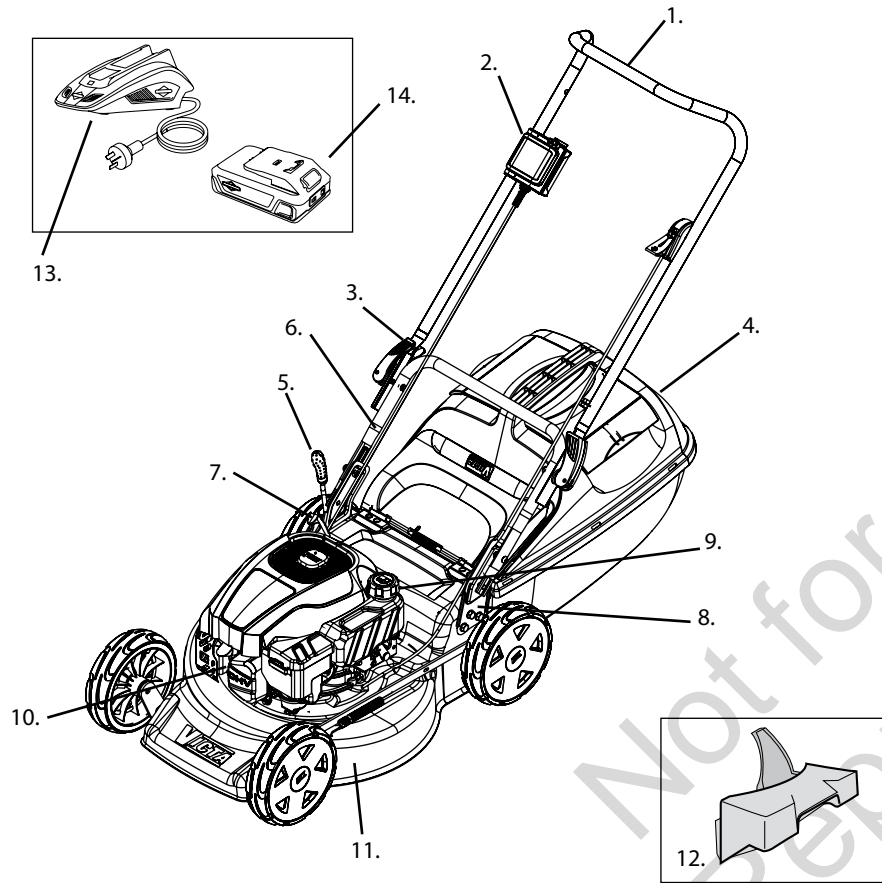
A pair of protective gloves.



Eye protection.



## Features

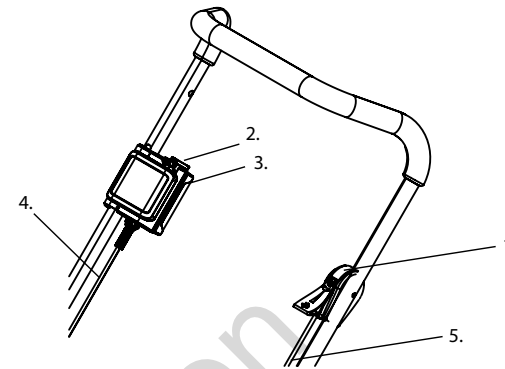


1. Upper Handle	4. Grass Catcher	7. Pull Start	10. Spark Plug	13. 18V Charger
2. 18V Push Button Start Module	5. Height Adjust Lever	8. Handle Bracket	11. Deck	14. 18V Battery
3. Handle Knob/ Lever	6. Lower Handle	9. Fuel Cap	12. Mulch Plug	

Refer to the Briggs & Stratton 18V Battery & Charger instruction manual for further information relating to battery & charger use, servicing, storage and safety.



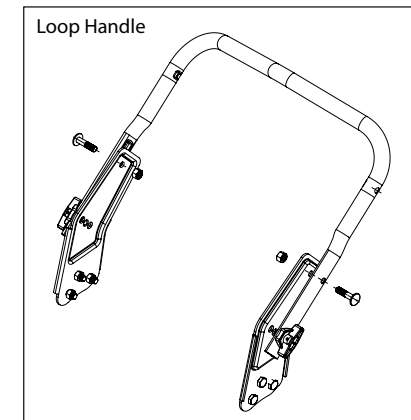
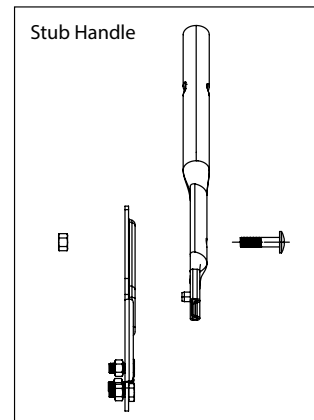
## Control Panel Features



1. Throttle Control
2. Start Button
3. Battery Slot
4. Power Cable
5. Throttle Cable

## Attaching lower handle

- Align the lower handle (either single loop or two separate stubs) with the holes in the handle bracket.
- Mate the pin on the lower handle with the lowest hole on the handle bracket (for adjustable handles, ensure the handle release mechanism is in the closed position so the pin protrudes).
- Next insert the socket-head bolt through the hole on the lower handle and through the upper hole on the handle bracket. Put the nut on the bolt on the inside of the handle bracket and tighten using appropriate spanner and alan key (supplied on some models)



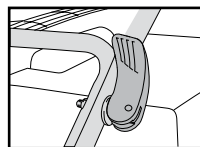
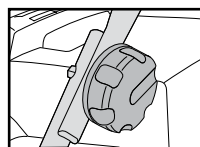


## ASSEMBLY PROCEDURES

### Attaching upper handle

Mowers will have either knobs or toggles to fix the handles in position. Refer to the instruction below which is specific to your particular model.

- Attach the upper handles using the knobs and bolts provided. The knobs should be on the outside.
- Tighten the handle knobs to secure the upper handle to the lower handle.
- Flip the handle toggles to secure the upper handle to the lower handle.
- On some models the knobs/toggles have to be consumer fitted.

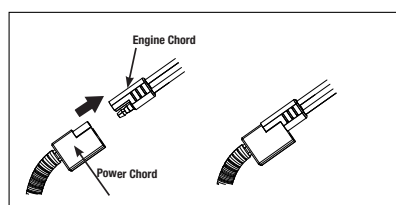
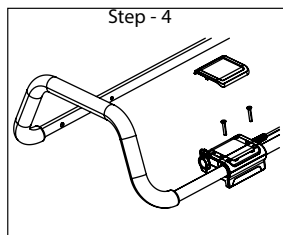
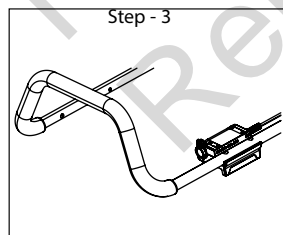
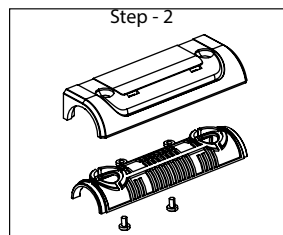
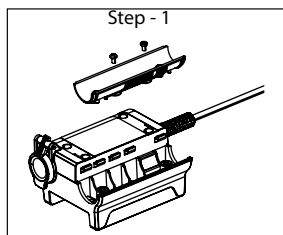


### Assembling 18V Push Button Start

Instructions below are for 1/2" handles. For 3/4" handles, do not assembly with sleeve.  
Please ignore the assembly instructions if the Push Button Start Module is already assembled.

The 18V Push Button Start Module can be used to start the lawn mower using a B&S 18V Battery. This module needs to be assembled to the upper handle on selected models.

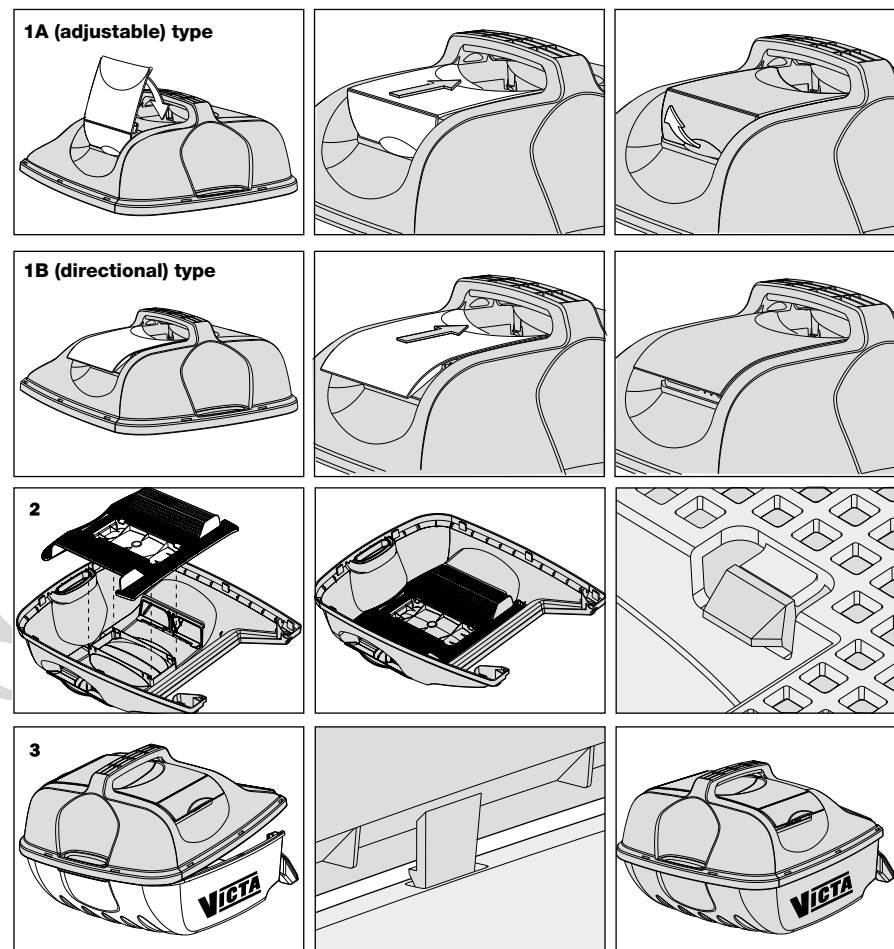
- Step - 1: Insert Bottom Sleeve into the main body and secure with screws.
- Step - 2: Insert Top Sleeve into Sleeve Cover and secure with screws.
- Step - 3: Place Main body on underside of upper handle. Locate the holes on the upper handle and align them with the screw holes on the Main Body.
- Step - 4: Place Sleeve Cover on Main Body of Push Button Start. Align holes of Sleeve cover with screw holes of Main Body and secure with large screws.
- Step - 5: Attach Top cover to Push Button Start Unit.
- Step - 6: For safety reasons the power cable is not connected to the engine during shipping.



## ASSEMBLY PROCEDURES



### Grasscatcher - hard/solid type



### Assembling the grasscatcher

- 1 Assemble the covers 1A or 1B to the top half of the grasscatcher.
- 2 Locate the centre protrusion of the mesh into the centre hole on the inside of the grasscatcher top, ensuring the curved edge of the mesh faces the rear handle. Firmly push the mesh into the top half of the grasscatcher, making sure that the four snap hooks engage securely.
- 3 Loosely locate the rear handle areas of the top and bottom grasscatcher halves then loosely locate the side edges. Check that all eight hooks from the top half are loosely located in the slots on the bottom half then firmly push the two halves together over each snap hook. Check that all of the snap hooks have engaged securely.
- 4 Tighten the two screws fitted to the front of the grasscatcher.

NOTE: Some models may have steps 1 to 3 already complete.

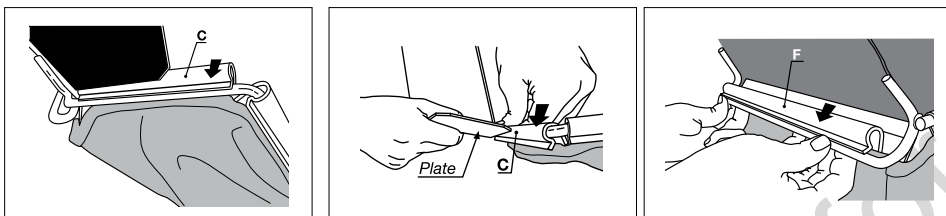
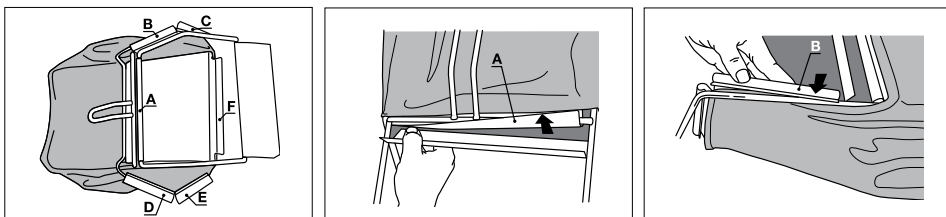


## ASSEMBLY PROCEDURES

### Grasscatcher - fabric type 18in & 19in models

There are 6 edges (A, B, C, D, E & F) which require to be clipped into the frame.

Note: Your catcher may come fully assembled.



#### Assembling the grasscatcher

1. Insert metal frame into fabric grasscatcher.
2. Clip edge A to frame.
3. Clip edge B and repeat the process for the opposite edge D.
4. Clip edge C.
5. Hold the plate in one hand. Then push edge C through the gap (on edges C and E only).
6. Clip edge F on the underside of the frame.

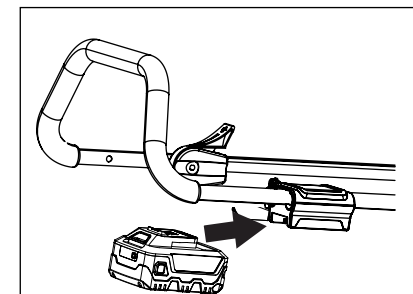
## ASSEMBLY PROCEDURES



### Installing the Battery

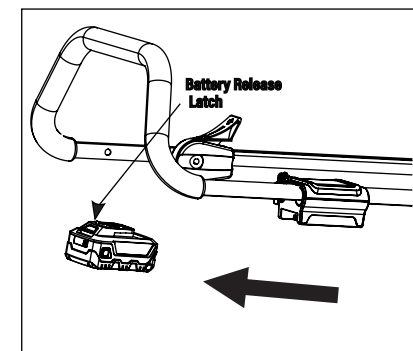
- Place the battery in the Push Button Start Module. Align raised rib on battery with grooves in the PBS Module's battery port.
- Make sure the latch on bottom of the battery snaps in place and that battery pack is secured in the PBS Module before beginning operation.

Note: Battery is not required to manually pull start the engine.



### Removing the Battery

- Press and hold the release latch button at the bottom of the battery.
- Pull/Remove battery from the lawn mower.



#### ⚠ WARNING

When placing battery in the control panel be sure the raised ribs on the battery align with the grooves in the top of the control panel. Make sure the battery is fully seated, and it latches into place properly. Improper installation of the battery can cause damage to internal components and may fall from product whilst in use resulting in personal injury.

⚠ Refer to the Briggs & Stratton 18V Battery & Charger instruction manual for further information relating to battery & charger use, servicing, storage and safety.

⚠ Remove the battery from the lawn mower when not in use.



## Starting & Stopping

These notes supplement the information on starting and stopping your lawnmower engine found in the Engine Operator's Manual supplied with your lawnmower. Please read your Engine Operator's Manual prior to attempting to start your engine for the first time. If your engine model is not covered by the notes below please read the Engine Operator's Manual supplied with your lawnmower.

### Briggs & Stratton 18V Start Push Button Start Engines

Please read your Engine Operator's Manual prior to attempting to charge the 18V Start - Push Button Start or starting your engine for the first time.

Note: B&S 18V Start Engines sold in Australia do not have the brake bale arm on the upper handle which may be noted in the Engine Manual text.

- Always check your engine oil level before starting the engine at the start of mowing.
- Check that the spark plug is connected before attempting to start the engine.
- Ensure you have fresh petrol in the engine's fuel tank.
- Ensure the fuel tap, where fitted is ON before attempting to start the engine.
- For your safety, keep your hands and feet clear of the mower blades at all times.

### Briggs & Stratton 18V Push Button / Pull Start Engines

This engine is equipped with B&S 18V Start Push Button Technology.

#### Starting the Lawn Mower

1. Push the Throttle Control to Start/Run Position
2. Insert the Briggs & Stratton 18V lithium ion battery in to the slot. Ensure it clicks into place. Refer the battery and charger manual for further details on charging the battery.
3. Push the Start Button firmly. You may need to hold down the start button for 1 or 2 seconds.

Or

Firmly hold the starter handle and pull the starter slowly until resistance is felt, then pull the cord rapidly.

Note: Battery is not required to manually pull start the engine.

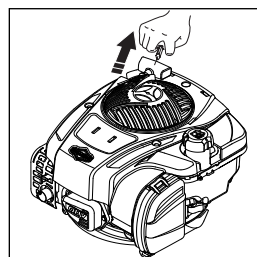
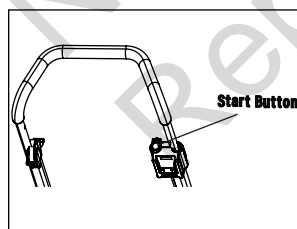
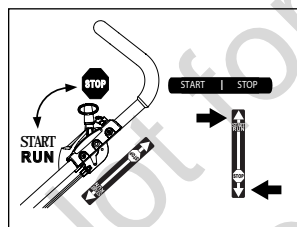
Note: Return the starter handle gently. Do not allow the starter handle to fly back and strike the engine cowling as damage may result.

To stop the engine move the throttle control lever to the STOP position.

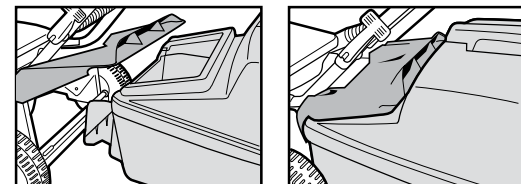
Remove the battery from the lawn mower when not in use.

Do not press and hold start button for more than 2 seconds.

Do not press button while engine is running.



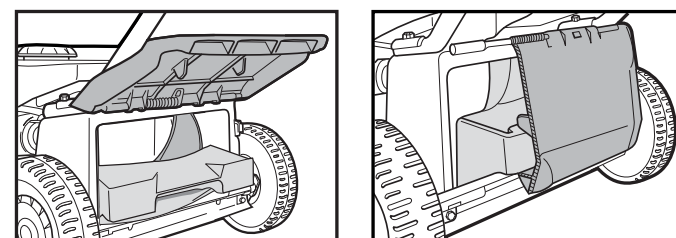
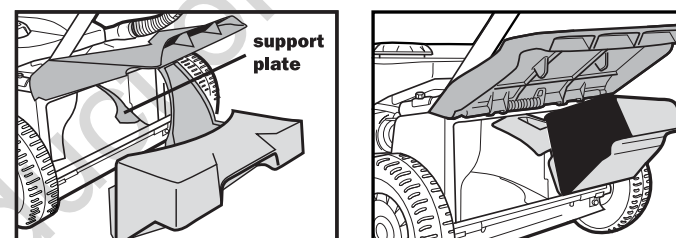
## Grasscatcher - Fitting 18in & 19in models



### Fitting the grasscatcher

- Stop the engine.
- Raise the rear flap. Locate the grasscatcher tongue over the rear axle and insert the grasscatcher under the rear flap.
- Lower the rear flap to retain the grasscatcher.

## Mulching Plug - mulch Capable models only



- Stop the engine and set the mower height setting.
- Mulching is most effective between height settings 4 and 10.
- Lift the rear flap and identify the support plate as shown. Note the orientation of the mulching plug.
- Insert the mulching plug into the baseplate by first inserting the tongue to the right, then swinging the left side into position. The mulch plug should rest on the rear cross-member
- Ensure that the mulching plug is resting on the support plate and is positioned against the inside of the baseplate. Push the mulching plug down so that it rests flush against the rear cross member.
- Close the rear flap ensuring that it closes fully. The rear flap should rest on the mulching plug as shown in the sectional illustration.



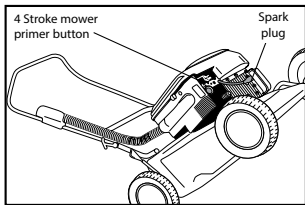


STOP the engine before inserting or removing the mulching plug.

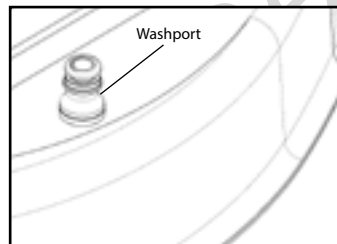
## Cleaning

Before cleaning the mower, ensure the throttle lever is in the 'STOP' position. Turn the fuel tap off, disconnect the spark plug lead and wedge it well away from the spark plug, and remove the battery.

- Remove grass build up from the air intakes on the top of the mower cowl, around the engine and carburettor, and around the air filter body.
- The underside of the mower should be cleaned regularly to remove dirt and grass build up; any build up will adversely affect grass catching and mulching performance and can promote corrosion on steel baseplates.



- When cleaning the underside of the mower, always tilt handle back to ground level so the front wheels are off the ground and spark plug is pointing to the sky. Tilting in other direction can cause the oil to contaminate the fuel & damage air filter causing starting difficulties.
- A hose may be used on the underside of your mower ONLY. Care must be taken to NOT get water into the engine, as it may damage the magneto or get into the fuel system.
- If your mower is fitted with a washport, simply attach a garden hose whilst the engine is running and turn on the water.
- Keep the battery, starter switch, starter motor and all leads dry.
- To prevent chassis corrosion, the underside of your mower should be cleaned immediately after mowing an area which has been recently dressed with sulphate of ammonia or fertiliser.
- After cleaning, run the engine briefly to dry off excess moisture before storing.



(Only on some baseplate models)

## Storage

Fuel can become stale when stored over 30 days. Stale fuel causes acid and gum deposits to form in the fuel system. Drain the fuel for long term storage.

Remove the battery from the lawn mower when not in use.



## Maintenance Chart

Features	Requirements	Before Start	After Finish	Refuelling	Weekly	Monthly	If Faulty	If Damaged/Faulty	As Required
Lawnmower	Visual inspection	•		•					
Throttle lever	Check operation		•						
Cutting system (Blades)	Inspect and check assembly	•							
	Replace*						•	•	
Rear flap	Inspect and check assembly	•							•
Chassis	Check for buildup of grass		•						
	Clean		•						
	Replace							•	
Air filter	Check	•							
	Clean	•							
	Replace						•	•	
Engine cylinder fins	Clean					•		•	
Spark plug	Replace						•	•	
All accessible fasteners	Clean	•							
	Retighten								•
Engine mounting bolts	Check					•			
	Retighten								•
Mulching plug	Inspect and check assembly							•	
Muffler	Inspect					•		•	
	Replace							•	•
Grasscatcher	Check	•							
	Clean		•						
	Replace							•	
Check oil	Check	•							

\* Victa recommends that certain maintenance, repair and inspection work be carried out by a Victa Authorised Service Centre.

Before carrying out maintenance, STOP the engine, disconnect the spark plug lead from the spark plug and move it well away from the spark plug. Remove the battery.

Never attempt maintenance that is not outlined in this manual. All repair work must be carried out by a Victa Authorised Service Centre.



## Blade Replacement

### For Your Safety

- Before starting the mower check blades and bolts for damage or wear.
- Victa recommends that all maintenance, repair and inspection work be carried out by a Victa Authorised Service Centre.

Worn and damaged blades are major hazards.



• Stop the engine and disconnect the spark plug lead before fitting new blades.

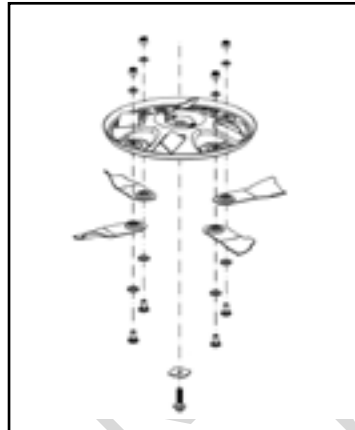
- Work from the grasscatcher flap.

With the rear flap secured, in a raised position undo the blade nut, applying upward pressure to the bolt head into the blade disc. (the head of the bolt will not rotate due to the diamond shape in the underside of the head).

Assembly: Fit as per the drawing remembering to push the head of the bolt into the blade disc (this will stop the bolt head from turning). Ensure correct order of assembly.

**DO NOT** lay mower on its side (4 Stroke models).

- We recommend changing blades, bolts, nuts and washers as a set. Metal fatigue and damage may occur which may not be visible to the operator. Always replace all blades to ensure correct engine balance, reducing vibration and wear. Tighten nuts on blade bolts to 14-19 Nm.
- Always turn the nut to check tightness, not the bolt.



Use only genuine replacement parts made and guaranteed by Victa. Insist on them from your parts and service dealer. Detailed fitting instructions are printed on genuine Victa blade packs. Use of non-genuine blades may void your warranty, and could result in



Refer to the Briggs & Stratton 18V Battery & Charger instruction manual for further information relating to battery & charger use, servicing, storage and safety.



## Troubleshooting

Problem	Possible Cause	Correction
Does not start	Out of fuel	Refill tank with correct fuel
	Throttle lever in incorrect position	Refer to 'Starting Procedures'
	Spark plug lead not connected	Press terminal cover fully onto the spark plug
	Dirty spark plug	Replace spark plug
	Stale fuel in tank from last season	Contact Service Centre
	Water in fuel tank	Contact Service Centre
	Service required	Contact Service Centre
	Engine worn	Contact Service Centre
	Low or no oil (4 stroke)	Top up with correct oil
	Battery discharged	Charge battery
Loss of power	Incorrect throttle setting	Set throttle lever in the 'RUN' position
	Dirty air filter element	Clean or replace
	Too low height adjustment	Raise cutting height
	Low or no oil (4 stroke)	Top up with correct oil
Poor cutting or catching	Blades worn or damaged	Replace
	Blade disc loose	Contact Service Centre
	Slow running	Refer to 'Loss of Power' above
	Blades restricted by grass and dirt accumulated under the baseplate	Remove spark plug lead and clean under the baseplate
	Blocked vents in grasscatcher	Clean vents
Excessive vibrations	Build up of grass and dirt on upper surface of blade disc	Clean
	Blades out of balance	Replace all blades
	Bent or damaged disc or blade	Replace disc or all blades
	Looseness of assembly	Check all nuts for tightness
	Low or no oil (4 stroke)	Top up with correct oil
Engine stops frequently	Fuel supply blocked	Check fuel line
	Engine worn or seized	Contact Service Centre
	Fuel cap not venting	Check / Loosen cap slightly
	Low or no oil (4 stroke)	Top up with correct oil

If running difficulties continue, please contact your closest Victa Authorised Service Centre. You will find the latest Service Centre listing on the Victa website, [www.victa.com.au](http://www.victa.com.au) or contact Victa Customer Service 1800 356 632.



Lined writing area on page 17

Not for  
Reproduction



Lined writing area on page 18

Not for  
Reproduction

©2023 Briggs & Stratton  
Victa, Victa Razor & Aerogrip are  
trademarks of Briggs & Stratton Australia Pty. Ltd.

ABN 13 006 576 856

All rights reserved. No part of this booklet may be reproduced by any means  
without prior written permission. All information herein is subject to change without notice.

80127969-A

2441	A	RL	JM	OPERATORS MANUAL	24/05/23
ECN	ISS	DRN	CKD	DESCRIPTION	DATE