



TTM102RH Series

RIDE ON



OWNER'S MANUAL



WARNING!

Read this manual carefully before using the machine.



INTRODUCTION

This manual has been written to help you become familiar with the machine and to use it safely and efficiently. It should be read in its entirety before operating the machine for the first time to ensure safe and efficient operation, and should be kept close to hand for future reference.

Since we regularly work at improving our products, you might find slight differences between your machine and the descriptions contained in this manual. Modifications are occasionally made to the machine without notice and without the obligation to update the manual. The essential safety and function characteristics, however, will remain unaltered. If in doubt, do not hesitate to contact your Masport service dealer.

AFTER-SALES SERVICE

This manual gives all the necessary instructions for using the machine and carrying out basic maintenance.

Any adjustments or maintenance operations not described in this manual must be carried out by your Masport Dealer or specialized Service Centre. They have the necessary knowledge and equipment to ensure that the work is done correctly without affecting the safety of the machine.

This will help you keep your new purchase in peak performance and maintain its value over time.

For any replacement, please contact your Masport service dealer.



IMPORTANT

The lawnmower must always be used with utmost caution. Labels have been affixed to the machine showing pictographs illustrating the main operating precautions.

Because these labels, according to applicable safety standards, are considered a mandatory part of the machine, the user is responsible for replacing them in the event of their becoming detached or illegible.

LABEL POSITION

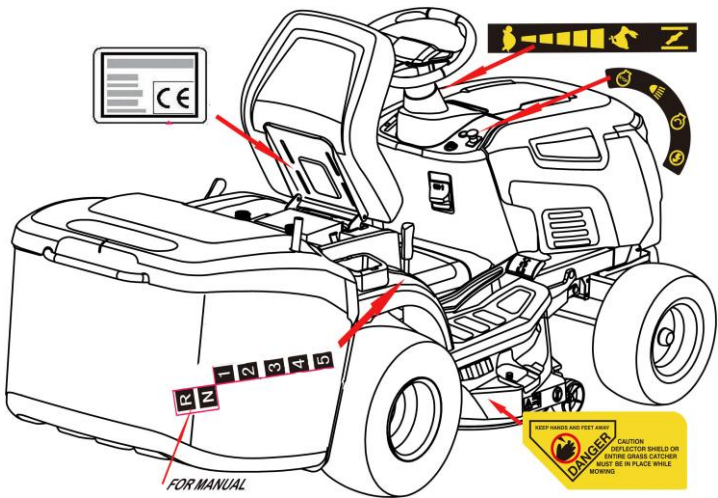
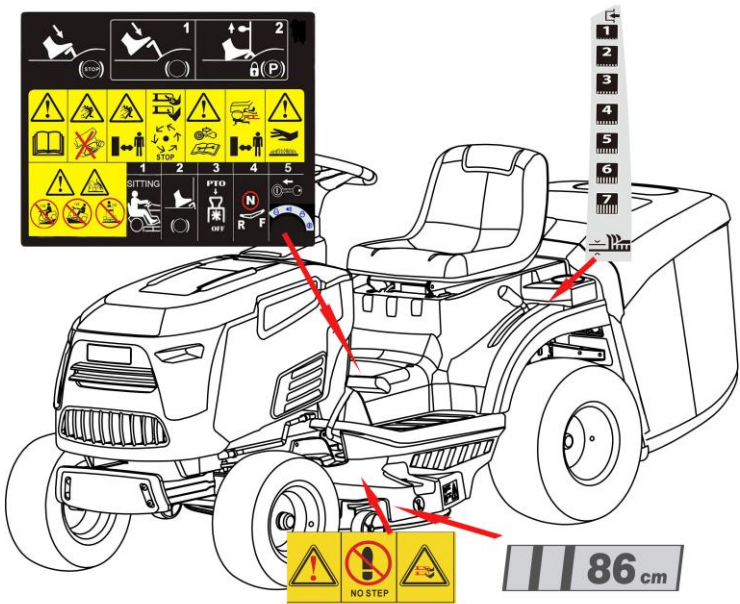


TABLE OF CONTENTS

1. SAFETY..... 6

2. IDENTIFICATION OF THE MACHINE AND COMPONENTS 12

3. UNPACKING AND ASSEMBLY 14

4.CONTROLS AND INSTRUMENTS 20

 5.1 SAFETY RECOMMENDATIONS 24

 5.2 WHY THE SAFETY DEVICES CUT IN 24

 5.3 DIRECTIONS BEFORE STARTING WORK 25

 5.4 USING THE MACHINE 26

 5.5 USE ON SLOPING GROUND 30

 5.6 TRANSPORTING..... 32

 5.7 LAWN MAINTENANCE..... 32

6. MAINTENANCE 33

 6.1 SAFETY RECOMMENDATIONS 33

 6.2 SCHEDULED MAINTENANCE..... 33

 6.3 CHECKS AND ADJUSTMENTS..... 35

 6.4 DISMANTLING AND REPLACEMENT 36

 6.5 LUBRICATION..... 38

7. TROUBLESHOOTING..... 39

8. SPECIFICATIONS..... 44

9. WARRANTY CARD 47

1. SAFETY

1.1 HOW TO READ THE MANUAL

Some paragraphs in the manual containing important information regarding safety and operation are emphasized in the following ways.

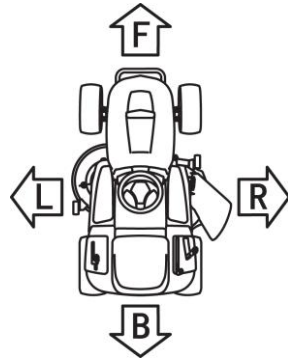
NOTE or **IMPORTANT** These give details or further information on what has already been said in the aim to prevent damage to the machine.

▲ WARNING! Failure to adhere to these instructions will result in the risk of injury to oneself or others.

▲ DANGER! Failure to adhere to these instructions will result in the risk of serious injury or death to oneself or others.

NOTE Positions on the machine, such as “front”, “back”, “left” or “right” hand side, are provided relative to a seated operator.

IMPORTANT For all operations regarding the use and maintenance of the engine not described in this manual, refer to the relevant engine manual(s) which form an integral part of all the documentation supplied with the machine.




1.2 GENERAL SAFETY REGULATIONS

▲ WARNING! Read carefully before using the machine.

A) TRAINING

1) **Read the instructions carefully.** Familiarise yourself with the controls and how to use the equipment properly.

2) Never let children or people unfamiliar with these instructions use the machine.

 3) **Never mow while other people, especially children, or pets, are nearby; Never mow in poorly lit conditions.**

4) Keep in mind that the operator or user is responsible for accidents or hazards that may occur to other people or their property.

5) Do not carry passengers.

6) All drivers should seek and obtain professional and practical instruction. Such instruction should emphasise:

– the need for care and concentration when working with ride-on machines;

SAFETY

- you cannot use the brake to regain control of a ride-on machine sliding down a slope.

The main reasons for loss of control are:

- insufficient wheel grip;
- over-speeding;
- inadequate braking;
- unsuitability of the machine for the designated task;
- unawareness of the effect of ground conditions, especially with respect to slopes;
- incorrect hitching and load distribution

B) PREPARATION



1) **While mowing, always wear sturdy footwear and long trousers.** Do not operate the equipment barefoot or wearing open-toed footwear.

2) Thoroughly inspect the area where the equipment is to be used and remove any objects which could be ejected from the machine as a projectile.



3) **DANGER! Petrol is highly flammable:**

- store fuel in containers specifically designed for this purpose;
- refuel outdoors only and do not smoke while refuelling;
- **add fuel before starting the engine. Never remove the cap of the fuel tank or add petrol while the engine is running or when the engine is hot;**



– if you spill petrol, do not start the engine and move the machine away from the area of spillage. Do not create any source of ignition until any spilled petrol has completely evaporated.

- put back and tighten all fuel tank and container caps securely.

4) Replace faulty mufflers.

5) Before each use, always inspect the machine to check that the blades, blade bolts and cutting assembly are not worn or damaged. Replace worn or damaged blades and bolts in sets to preserve proper blade balance.

6) On multi-bladed machines, remember that the rotation of one blade can cause other blades to rotate

C) OPERATION



1) Do not start the engine in a confined space where lethal carbon monoxide fumes cannot be ventilated.

2) Mow only in daylight or good artificial light.

3) Before starting the engine, disengage the blades and ensure the hydrostatic pedals are in the neutral position.

SAFETY

4) Do not drive the machine up and down slopes where the gradient exceeds 15°(27%).
Do not drive the machine across the face of a slope where the gradient exceeds 10°(18%).

5) Remember there is no such thing as a “safe” slope. Travelling on grass slopes requires particular care. To protect against overturning:

- do not stop or start suddenly when going up or downhill;
- engage the drive slowly and always keep the machine in gear, especially when travelling downhill;

- travelling speed should be kept low on slopes and during tight turns;
- keep vigilant in case of uneven terrain or other hidden hazards;
- never mow across the face of the slope.

6) Use care when pulling loads or using heavy equipment:

- use only approved drawbar hitch points;
- limit loads to those you can safely control;
- do not turn sharply. Take especial care when reversing;
- use counterweight(s) or wheel weights whenever advised in the instructions manual.

7) Stop the blades before crossing surfaces other than grass.

8) Never use the machine with damaged guards, or without the safety protective devices in place.

9) Do not change the engine governor settings or overspeed the engine. Operating the engine at excessive speed can increase the risk of personal injury.

10) Before leaving the operator's seat:

- disengage the blades and lower the deck;
- ensure the pedals are in the neutral position and apply the parking brake;
- stop the engine and remove the ignition key.

11) Disengage the blades, stop the engine and remove the ignition key:

- before clearing blockages or unclogging the collector channel;
- before cleaning, checking or servicing the machine;
- after striking a foreign object. Inspect the machine for damage and make repairs before restarting and operating the machine;

- If the machine develops an abnormal vibration (check for the causes immediately).

12) Disengage the blades for transport or whenever they are not in use.

13) Stop the engine and disengage the blades:

- before refueling;
- before making a height adjustment, unless the adjustment can be made from the operator's position.

14) Reduce the throttle during engine run-out. If the engine is provided with a shut-off valve, cut off the fuel when you have finished mowing.

SAFETY

15) Watch out for traffic when crossing or near roadways.

16) Never direct any discharge of material toward bystanders nor allow anyone near the machine while in operation.

17) Use genuine spare parts. Genuine spare parts and attachments have been designed specifically for this machine. Use of non-original spare parts and attachments will jeopardize the safety of the operator and/or machine.

18) Do not mow during thunderstorms. The machine offers no protection against lightning strikes.

19) Long-term exposure to noise can result in permanent hearing impairment. So always use approved hearing protection and place adequate limits on time spent mowing.

20) Do not use the tractor lawnmower and/or any accessories attached to it in the event of fatigue, illness, or after the consumption of alcohol, drugs or medications that impair reaction time and/or ability to focus.

21) The lawnmower shall not be operated without either the entire grass catcher or rear deflector in place.

22) To reduce the impact of noise and vibration emission, take frequent breaks, use low-vibration and low-noise operating modes as well as wear personal protective equipment.

Take the following points into account to minimise the vibration and noise exposure risks:

- Only use the machine as intended by its design and these instructions.
- Ensure that the machine is in good condition and well maintained.
- Use correct accessories for the machine and ensure they are in good condition.
- Keep tight grip on the steering wheel.
- Maintain this machine in accordance with these instructions and keep it well serviced.

• Plan your work schedule to spread any high vibration tool use across a longer period of time.

• Prolonged use of the machine exposes the user to vibrations that can cause a range of conditions collectively known as hand-arm vibration syndrome (HAVS) e.g. fingers going white; as well as specific diseases such as carpal tunnel syndrome. To reduce this risk when using the machine, always wear protective gloves and keep your hands warm.

IMPORTANT

Anyone using the riding lawn mower should first be acquainted with the instructions in this manual and completely familiarize themselves with the controls to ensure correct and safe machine use.

D) MAINTENANCE AND STORAGE

1) Keep all nuts, bolts and screws well secured

SAFETY

- 2) Never store a machine with petrol in the tank inside a building where fumes may reach an open flame or spark.
- 3) Allow the engine to cool down before storing in an enclosed area.
- 4) To reduce the risk of fire, keep the engine, muffler, battery compartment and petrol storage area free of grass, leaves, or excessive grease.
- 5) Check the grass-catcher frequently for wear or deterioration.
- 6) Replace worn or damaged parts as soon as they're discovered.
- 7) If the fuel tank must be drained, this should be done outdoors.
- 8) On multi-bladed machines, remember that the rotation of one blade can cause other blades to rotate.
- 9) When the machine is to be parked, stored or left unattended, lower the cutting height unless a positive mechanical lock is used.

IMPORTANT The blades are sharp and present the risk of serious injury! Before carrying out any inspection, cleaning, or repair operations on the cutting deck, stop the engine and take out the ignition key. Disconnect the spark plug wire and keep the cap away from the plug to avoid accidental firing.

1.3 SAFETY LABELS

Your machine must be used with care. This is why labels with illustrations have been placed on the machine, to remind the operator of the main precautions to take during use.

These labels are considered an integral part of the machine.

Should a label come off or become illegible, contact your dealer to replace it. Their meanings are explained below.



Warning:

Read the instructions before operating this machine.



Warning:

Disconnect the ignition key and read the instructions before carrying out any repair or maintenance work.



Danger!

Dismemberment:

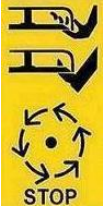
Ensure children stay clear of the machine at all times while the engine is running.



Danger!

Risk of burns

Wait for the engine to completely cool down before making any adjustments or servicing the engine itself.



Risk of injury.

Blades in movement, the blade will continue turning for some time after switching off the engine or disabling the blade control.



Warning:

No stepping on the deck or discharge guard.

Warning: Do Not Step



Danger!

Ejected objects:

Do not operate without the discharge guard or grass-catcher in place.



Danger!

Ejected objects:

Warning: Keep bystanders away.



Danger!

Warning: KEEP HAND AND FEET AWAY FROM THE BLADES.

Danger!

Risk of serious injury.

Keep hands and feet away until the blades and all other moving parts come to a complete stop.



Warning!

Never use pressure lances to wash the transmission system.



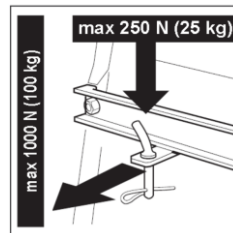
Danger!

Risk of overturning on steep gradients

Do travel up or down slopes with gradients greater than 15°(27%).
Do travel across slopes with gradients greater than 10°(18%).

1.4 REGULATIONS FOR TOWING

A kit for towing a small trailer is available as standard. This accessory is to be fitted following the instructions provided, When using the towing kit, do not exceed the recommended loads stated on the label and follow the safety instructions.

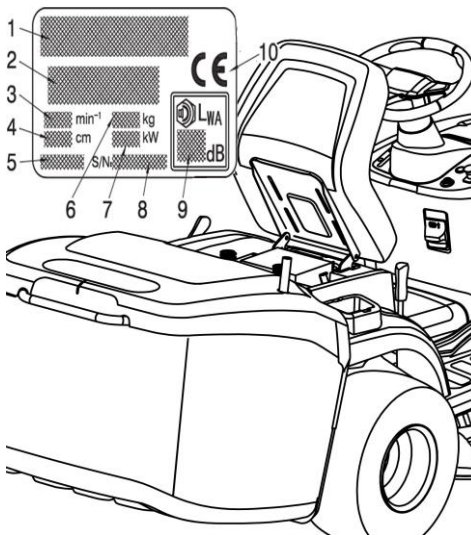


2. IDENTIFICATION OF THE MACHINE AND COMPONENTS

2.1 IDENTIFICATION OF THE MACHINE

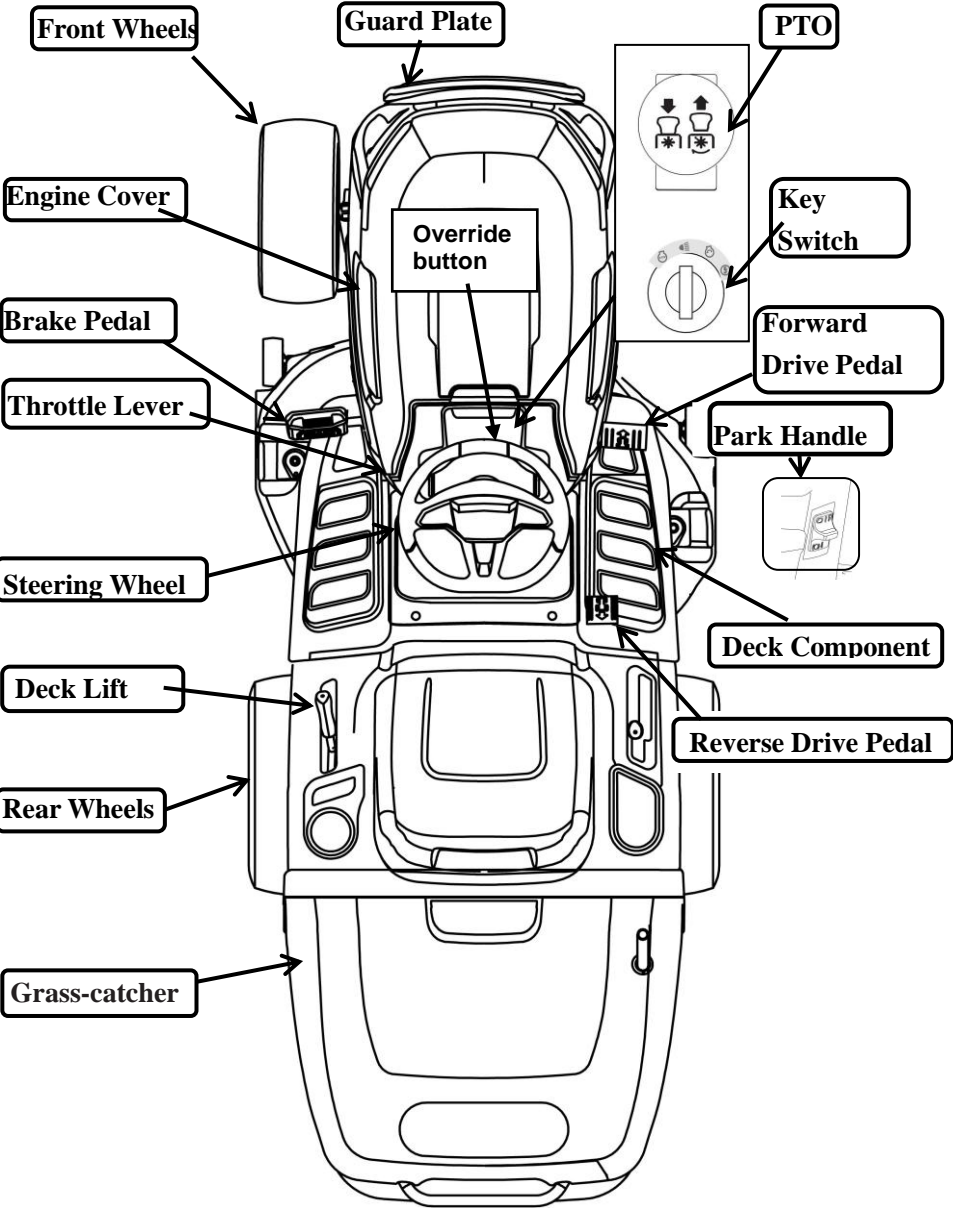
The label located in the seat bracket has the essential data of each machine

1. Name and address of manufacturer.
2. Designation of the machine
3. Type of machine
4. Cutting width
5. Year of manufacture
6. Mass of the machine
7. Nominal power the of engine
8. Serial number
9. Acoustic power level according to directive 2000/14/CE
10. Conformity mark according to directive 2006/42/EC



2.2 IDENTIFICATION OF MAIN COMPONENTS

The main components of the machine are as follows:



3. UNPACKING AND ASSEMBLY

For storage and transport purposes, some components of the machine are not installed in the factory and must be assembled after unpacking. Follow the instructions below

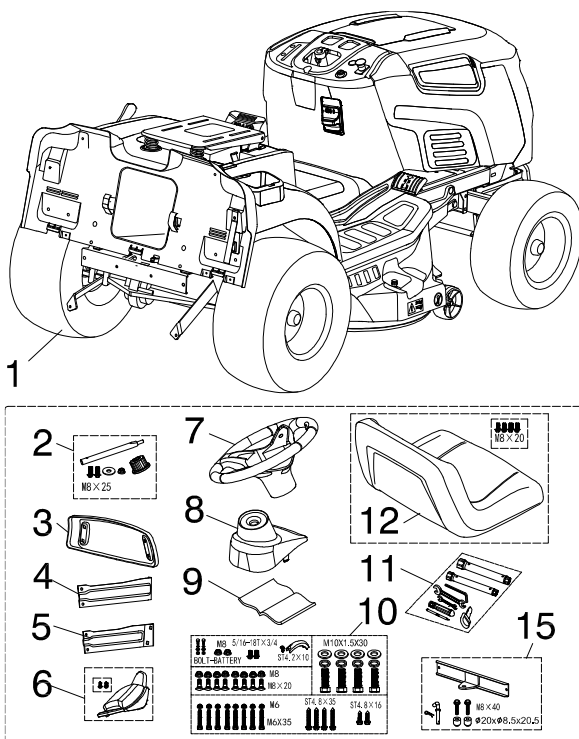
IMPORTANT

The machine is supplied without engine oil or fuel. Before starting the engine, fill with oil and fuel following the instructions given in the engine manual.

3.1 UNPACKING

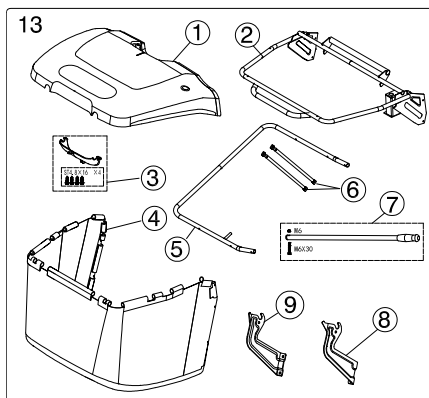
When unpacking the machine, take care and ensure all individual parts and fittings are present, and do not damage the cutting deck when taking the machine off the pallet.

1. Machine body;
2. Steering connect shaft and splined hub;
3. Bumper,
4. Bumper bracket L;
5. Bumper bracket R;
6. Steering wheel cover;
7. Steering wheel;
8. Steering shaft cover;
9. Instruction manual;
10. Nuts, bolts, washer, hook ;
11. Tools and starter key;
12. Seat;
13. Grass-catcher component;
14. Rear baffle plate component.
15. Towing Kit



13. Grass-catcher component

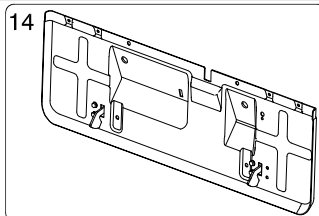
- ① Cover;
- ② Top frame weldment;
- ③ Layer board and screw;
- ④ Grass bag;
- ⑤ Front bracket;
- ⑥ Side stay pipe;
- ⑦ Overturn lever, nut, screw;
- ⑧ Swivel bracket (R);
- ⑨ Swivel bracket (L)



14. Rear baffle plate component.

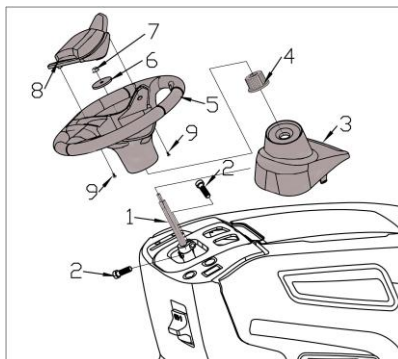
NOTE

To prevent damage to the cutting deck, raise it to its maximum height and take utmost care when taking the machine off the pallet.

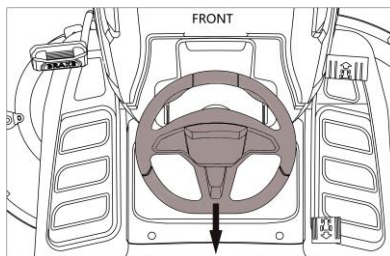
**3.2 FITTING THE STEERING WHEEL**

Put the machine on a flat surface and straighten up the front wheels.

- a. Fit the shaft (1) onto the couplings and tightening the screw M8x25 (2). (Use the hex wrench 5 of the included tools.)
- b. Fit the steering shaft cover (3).
- c. Inset the splined hub (4) to shaft (1), mounting steering wheel (5), spacer (6) and tightening nut M8 (7). (Use the open end wrench 13-15 of the included tools.)
- d. Inset the steering wheel cover (8) into the steering wheel and tighten the two screws (9). (Use the cross screwdriver in the included tools.)

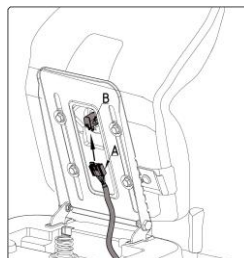
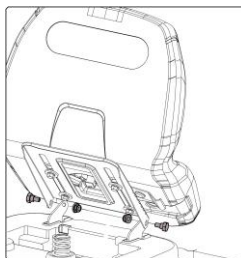
**NOTE**

Pay attention to the direction when mounting the steering wheel.



3.3 FITTING THE SEAT

1. Release 2pcs M8 nuts and 2pcs screws from the seat bracket on the machine. (Use the open-end wrench 13-15 in the included tools.)
2. Mount the seat on the seat bracket using the released 2pcs M8 nuts and 2pcs screws.
3. Connect the wire harness A and switch B underneath the seat.



3.4 CONNECTING THE BATTERY



The electrolytic fluid is a solution of sulphuric acid.

Danger: Sulphuric acid is poisonous



Danger: Sulphuric acid is corrosive Sulphuric acid can cause blindness or severe burns.



Danger: Keep out of reach of children.



The owner of the electrical equipment must make sure that the equipment is properly disposed of if he no longer wants to keep the equipment. The old equipment can be returned to a suitable collection point that will dispose of the equipment in accordance with the national recycling and waste disposal regulations. This does not apply to any accessories or aids without electrical components supplied with the old equipment.

The reprinting or reproduction by any other means, in whole or in part, of documentation and papers accompanying products is permitted only with the express consent of Masport Ltd.



1) Fit the battery in its housing.

IMPORTANT

Position the battery with the polarities (+) and (–) visible

2) Connect the battery connectors to the machine's connection leads and tighten the two screws. Use the protective cap for the two wires once in place. (Use the open end wrench 8-10 and cross screwdriver of the included tools)

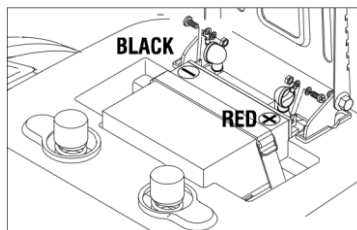
3) Secure the battery with the rubber strap.

NOTE

This machine uses the battery:

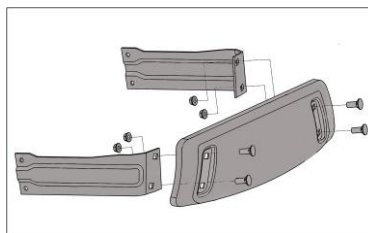
12 V — 18Ah.

The battery is fully charged before leaving the factory. If the battery has insufficient charge to start the mower, use a 12V1A charger to charge the battery.

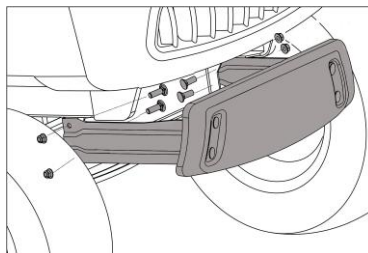


3.5 MOUNTING THE FRONT BUMPER

a. Mount the bumper bracket L and bumper bracket R on the front bumper piece using four nuts and four screws. (Use the open-end wrench 13-15 in the included tools.)

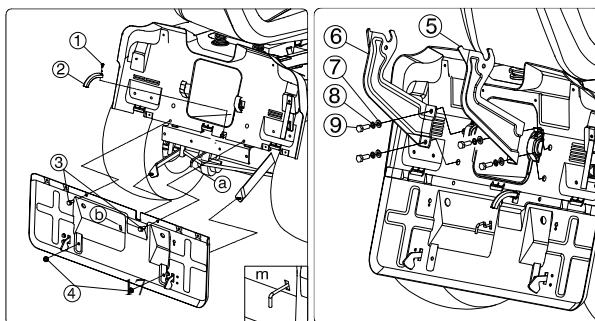


b. Mount the front bumper on the front of the machine's frame using the four nuts and four screws. (Use the open-end wrench 13-15 in the included tools.)



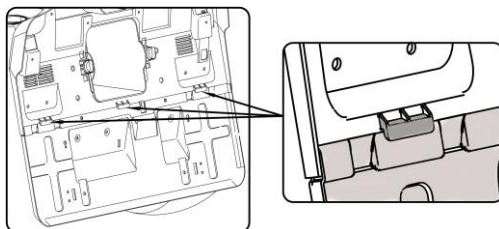
3.6 MOUNTING REAR BAFFLE PLATE COMPONENT

1. Mount the Hook (2) using the included screws (1)
2. Fit the Pull lever (a) through the hole (b); (see Figure m)



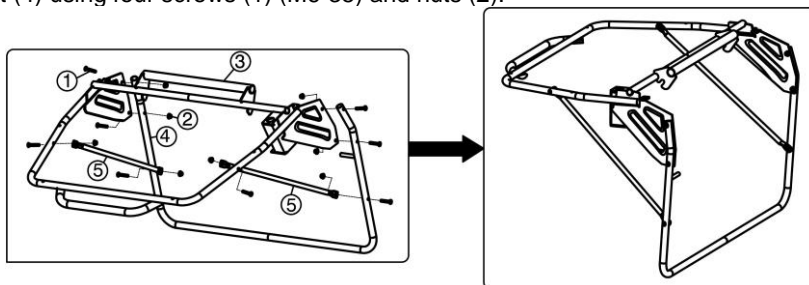
3. Mount the rear baffle plate on the rear of the machine's frame using screws (3) (screw 5/16-18);
4. Mount the rear baffle plate component on the brackets L&R using nut(4)(M8);
5. Mount the swivel brackets (5, 6) using bolt (9) and washers (7, 8) .

Note: When installing the rear baffle plate, you must fit it underneath the three convex tabs as per the diagram.

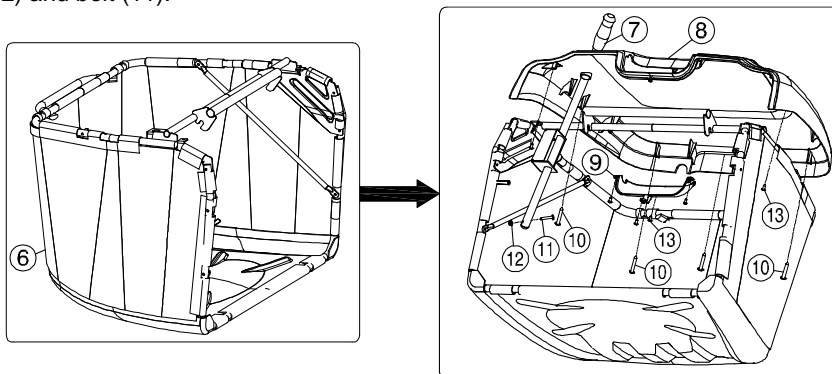


3.7 MOUNTING GRASS-CATCHER

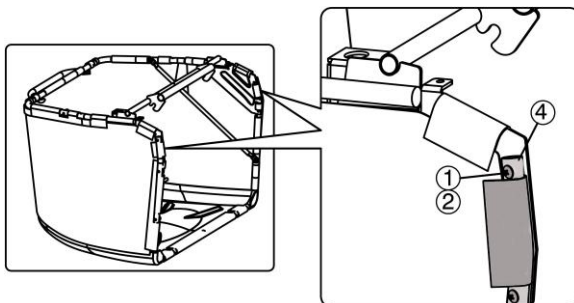
1. Mount the front frame (4) together with the top frame (3) using four screws (1) (M6-35) and nuts (2)
2. Mount the side frame supports (5) on the inner sides of the top frame (3) and front bracket (4) using four screws (1) (M6-35) and nuts (2).



3. Fit the grass bag (6) over the assembled frame
4. Mount the grass catcher lid (8) on the assembled frame component using four screws (10) ST 4.8x35 and two screws (13) ST 4.8x16. Mount the handle (9) using four screws (13) ST 4.8x16
5. Slot the catcher lever (7) through the grass catcher lid and fasten using the supplied nut (12) and bolt (11).



Note: Once the edges of the grass catcher bag are all clipped onto the grass catcher frame (4), then tighten the screws(1) and nuts(2).



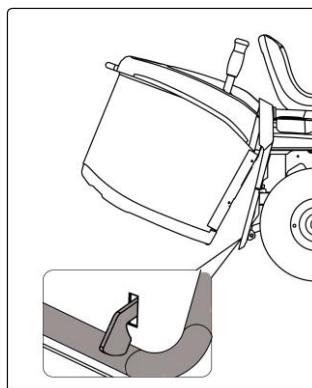
3.8 Catcher Protection

WARNING

1) Always use the machine with the exit guards installed.

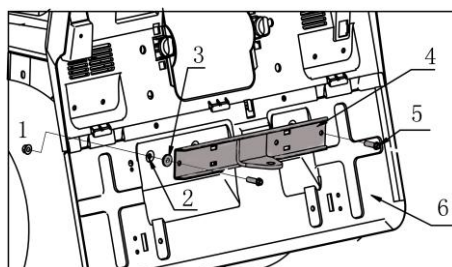
2) Attach the grass-catcher to the brackets and position it against the rear plate, so that the two reference marks are well aligned.

3) Make sure that the lower frame of the grass-catcher opening is attached to the pawl.

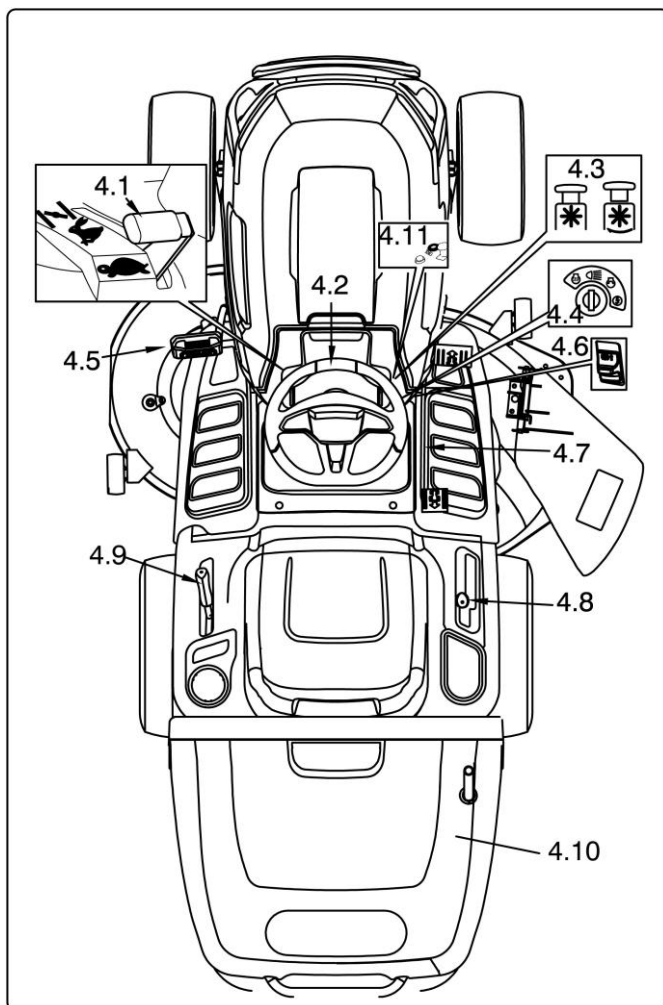


3.9 Fitting the towing kit (if desired)

Insert the bolts M8x40 (5) through the tow bar (4), the washer (3) and the holes (2) in the rear baffle plate (6), and screw the nut M8 (1) into the bolts (5), tightening them using the included spanners 8-10 and 13-15.



4.CONTROLS AND INSTRUMENTS



4.1 THROTTLE LEVER

This regulates the speed of the engine; The positions are indicated on a label showing the following symbols:



«CHOKE» for use during cold starts



«SLOW» for minimum engine speed



«FAST» for maximum engine speed

- The «CHOKE» position enriches the fuel/air mixture sent to the engine. It must only be used as necessary when starting the machine from cold.
- When moving from one area to another, put the lever in a position between «SLOW» and «FAST».
- When cutting, shift into «FAST». This ensures that the blades will spin at their maximum speed for the best cut.

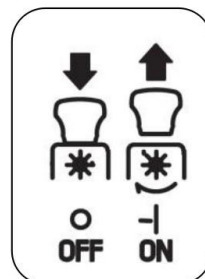
4.2 STEERING WHEEL

Controls the angle of the front wheels.

4.3 BLADE START/STOP KNOB

The blade start/stop knob is located on the RH dashboard in front of the key switch.

The blade start/stop knob operates the electric clutch. Pull the knob upwards to engage the blades. Push the knob downwards to disengage the blades.



4.4 KEY IGNITION SWITCH

This key operated control has four positions:



«OFF» everything is switched off.



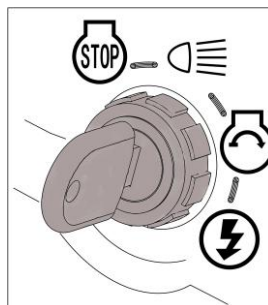
«ON» activates all parts



«START» connects the starter motor. If you release the key on «START», it will return to «ON»

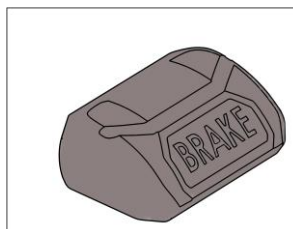


The key sends power to the head lights only when the switch is in this position.



4.5 Brake Pedal

The brake pedal is located on the left front side of the footboard. The brake pedal can be used for suddenly stopping the machine or setting the parking brake.



NOTE

Keep your foot off the brake pedal while pressing either of the hydrostatic transmission pedals

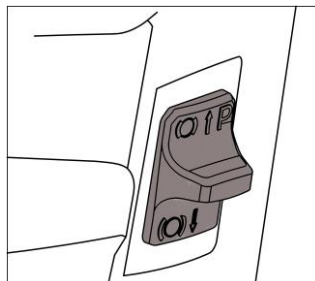
4.6 PARKING BRAKE LEVER

With machine stopped:

- 1) Keep the brake pedal pressed;
- 2) Lift the parking brake lever and hold it there;
- 3) Release the brake pedal.



This way, the rear wheels remain braked. To release the parking brake, fully press the brake pedal and it will automatically release.



NOTE

The engine will only start if the:

- operator is in the seated position; and
- the transmission pedal is in the neutral position; and
- the cutting means are disengaged; and
- the rear catcher or deflector is installed.

4.7 DRIVE ENGAGEMENT PEDAL

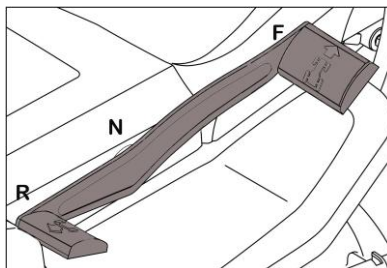
(for hydrostatic transmission model)

This pedal engages drive in the wheels and is used for modulating the machine's forward and reverse speeds.

—To engage forward drive, gently press it towards «F» with your foot. As you increase the pressure on the pedal, the speed of the machine increases.

—Reverse is engaged by pressing the pedal with the heel towards «R».

—The pedal automatically goes into neutral «N» when released.



⚠ WARNING!

Reverse must only be engaged when the machine is stopped.

NOTE

Make sure the parking brake has been released before driving the mower.

4.9 CUTTING HEIGHT ADJUSTMENT LEVER

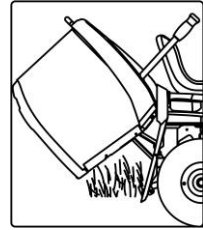


Lifts or lowers the cutting deck to adjust the cutting height.

There are seven positions for this lever (shown as «1» to «7» on the label), which correspond to various heights between 30 and 90 mm

4.10 GRASS-CATCHER

This overturn lever can be extended upwards and pulled towards the front of the machine by the operator to empty the grass catcher from the seated position. When closing the catcher again, ensure there is a good seal between the catcher and the rear wall of the machine.



4.11 Reverse Mode Operation Button (RMO)

The reverse mode operation knob is located on the right-hand side of the dashboard, to the left of the blade engagement knob. The blades will automatically stop when traveling in reverse. If, however, you wish to keep the blades rotating while reversing, the RMO button should be pressed.

NOTE: In general, mowing in reverse is not recommended.

5. HOW TO USE THE MACHINE

5.1 SAFETY RECOMMENDATIONS

⚠ DANGER!

The machine must only be used for the purpose for which it was designed (cutting grass).

Do not tamper with or remove the safety devices fitted on the machine.

REMEMBER THAT THE USER IS ALWAYS RESPONSIBLE FOR DAMAGE AND INJURY TO OTHERS. *Before using the machine:*

- *read the general safety information, paying particular attention to driving and cutting on slopes;*
- *carefully read the instructions for use. Make sure you are familiar with the controls and know how to stop the blades and the engine quickly;*
- *never put your hands or feet next to or beneath rotating parts and always keep away from the discharge chute.*

Do not use the machine if you are feeling unwell or are under the effect of medicine or any other substances that can impair your ability to use the machine. It is the user's responsibility to assess the potential risk of the area where work is to be carried out, and to take all the necessary precautions to ensure their own safety and that of others, particularly on slopes or rough, slippery and unstable ground.

Do not leave the machine in tall grass with the engine running to avoid the risk of starting a fire.

⚠ WARNING!

Do not use the machine on slopes with longitudinal gradients of more than 15°(27%); do not use the machine on slopes with lateral gradients above 10°(18%). If the machine is often used on sloping ground, fit counterweights beneath the cross-member of the front wheels. This will improve stability at the front and reduce the risk of tipping over.

IMPORTANT

All the references relating to the positions of controls are described in chapter 4.

5.2 WHY THE SAFETY DEVICES CUT IN

The safety devices work in two ways:

- they prevent the engine from starting if all the safety requirements have not been met;
- they stop the engine if any of the safety requirements are no longer met.

a) To start the engine, it is necessary that:

- the blades are not engaged;
- the foot operated hydrostatic transmission is in the neutral position;
- the operator is seated;

b) The engine stops when:

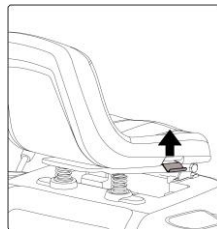
- the operator leaves their seat while mowing or driving;

5.3 DIRECTIONS BEFORE STARTING WORK

Before starting to mow, it is necessary to carry out several checks to ensure you can work efficiently and safely.

5.3.1 Seat adjustment

To adjust the position of the seat, lift the seat adjustment lever up, then slide the seat forward or rearward to the desired position; Release the adjustment lever to lock the seat in place. Make sure the seat is locked into position before operating the tractor.



5.3.2 Tyre pressure

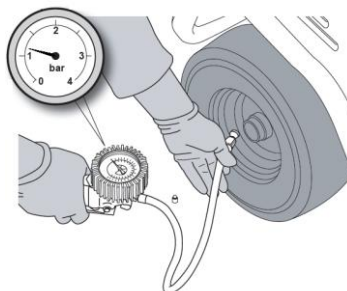
Having the correct tyre pressure is important for ensuring that the cutting deck is horizontal and mows evenly.

Unscrew the valve caps and connect a compressed air line with a gauge to the valves.

The correct pressures for each tyre are:

FRONT 1.2 bar (15 x 6.0-6)

REAR 1.0 bar (18 x 8.5-8)



5.3.3 Checking the fuel and oil

NOTE

The engine manual indicates which type of oil and fuel to use.

With the engine off, check the oil level. According to the instructions in the engine manual, this must be between the MIN and MAX marks on the dipstick.

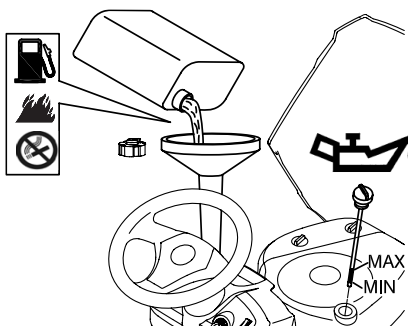
Refuel using a funnel. Do not completely fill the tank. The tank's capacity is about 7.5 litres.



DANGER!

Refuelling should be carried out in an open or well-ventilated area with the engine off. Always remember that petrol fumes are inflammable.

NEVER USE A NAKED FLAME TO LOOK INSIDE THE TANK. DO NOT SMOKE WHILE REFUELLING



IMPORTANT

Avoid spilling petrol onto the plastic parts to avoid damaging them. In the event of accidental spills, rinse immediately with water. The warranty does not cover damage to plastic parts of the bodywork or engine caused by petrol.

5.3.4 Checking machine safety and efficiency

1. Check that the safety devices function as described. (see 5.2)
2. Check that the brake is working properly.
3. Do not start mowing if the blades vibrate or if you are unsure whether they are sharp enough. A reminder that:
 - A dull blade pulls at the grass and causes the lawn to turn yellow.
 - A loose blade causes unwanted vibrations and can be dangerous.

⚠ WARNING!

Do not use the machine if you are unsure whether it is working safely or efficiently. If in doubt, contact your Dealer immediately to make the necessary checks and repairs.

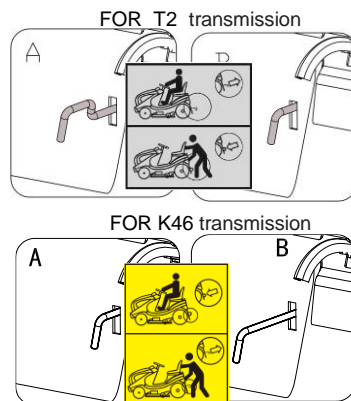
5.3.5 Hydrostatic transmission disengagement lever

This lever has two positions as shown on the labels:

«A» = Transmission engaged: for Use during driving and cutting;

«B» = Transmission disengaged: this makes it much easier to push the machine around by hand.

Depending on the version of your machine, there are two types of disengagement levers, with opposite modes of operation. The operating instructions for your machine type are found on a label sticker on the machine.



5.4 USING THE MACHINE

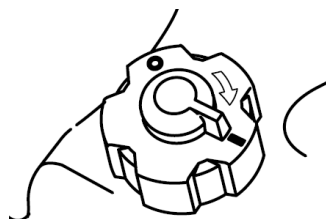
5.4.1 Starting

⚠ DANGER!

The engine must be started in an open or well ventilated area!
ALWAYS REMEMBER THAT EXHAUST GASES ARE TOXIC!

To start the engine:

- Open the fuel valve (to “I”);
- Close the engine cover;
- Raise the cutting deck to the highest setting;
- Disengage the blades;
- Leave the hydrostatic pedal in the neutral position;
- Engage the parking brake;
- If starting from cold, move the throttle to the «CHOKE» position shown on the label;
- If the engine is already warm, move the throttle lever between «SLOW» and «FAST»;
- Insert the ignition key and turn to «ON» to make electrical contact before then turning to «START» to start the engine;
- Release the key once the engine has started.



Once the engine has started, move the throttle to «SLOW».

IMPORTANT

The choke should be opened as soon as the engine settles and is running smoothly. Using the choke setting while the engine is already warm can foul the spark plugs and cause the engine to run erratically.

NOTE

If you have difficulty starting the engine do not persist as you can risk running the battery flat and flooding the engine. Turn the key to «OFF», wait for a few seconds and then repeat the operation. If the engine still does not start, refer to the engine manual

IMPORTANT

Remember that safety devices prevent the engine from starting if the starting criteria have not been met. Once all starting conditions are satisfied, the key must first be turned back to «OFF» before the engine can be restarted.

5.4.2 Starting and moving without mowing

⚠ WARNING!

This machine has not been approved for use on public roads. It may only be used in private areas, away from traffic.

When moving the machine, the blades must be disengaged and the cutting deck raised as high as possible. (position «7»)

For Hydrostatic transmission models : Position the throttle between «SLOW» and «FAST», disengage the parking brake and release the brake pedal. Press down gently on the drive pedal with the front of your right foot. Reach the desired speed gradually by slowly increasing pressure on the pedal and working the throttle.

5.4.3 Braking

First slow the machine down by reducing the engine speed. Then push the brake pedal to lower the speed until the machine stops.

5.4.4 Reverse

IMPORTANT

With the machine stopped, begin reversing by pressing the reverse pedal with the heel of your right foot.

5.4.5 Grass cutting

To start cutting:

- move the throttle to «FAST»;
- raise the cutting deck to the highest position;
- engage the blades;
- start moving forwards on the grass slowly and with caution;
- adjust the cutting height and speed of travel depending on the conditions of the lawn.

(For example, the height, thickness and dampness of the grass).

⚠ WARNING!

When cutting on sloping ground, reduce your speed to ensure safe conditions.

Reduce your speed if you notice a drop in engine power.

– Travel slowly enough that the machine has enough time to effectively cut the grass without damaging the lawn.

Disengage the blades and raise the cutting deck to the highest level if you need to avoid an obstacle.

IMPORTANT *The blades will stop when the machine travels in reverse by pressing the drive pedal towards with the heel of your right foot. Press the override button (left of the steering wheel) can keep the blades rotating. Mowing grass while in reverse is rarely necessary and strongly discouraged in most cases.*

5.4.6 Emptying the grass-catcher

NOTE

The grass catcher may only be emptied with the blades disengaged. If the blades are not disengaged, the engine will cut out when the catcher is released.

Do not let the grass-catcher become too full as this may block the tunnel.

When the grass-catcher is full you will hear an audible warning. If this occurs:

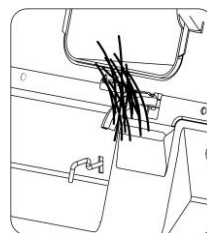
- disengage the blades to stop the warning sound;
- lower the engine speed;
- park the machine;
- engage the parking brake on slopes;
- pull out the overturn lever and tip up the grass-catcher to empty it;
- close the grass-catcher with sufficient force so that it hooks onto the pawl.

NOTE

Sometimes the audible warning may be heard while engaging the blades, even when the grass-catcher has been emptied.

This is due to residual grass-clippings left on the sensor

of the micro-switch. To stop the warning signal, disengage the blades and then immediately engage them again. If the sound continues, stop the engine, take off the grass-catcher and clean any accumulated grass-clippings off of the sensor.



5.4.7 Unblocking the collector channel

Cutting very tall or wet grass, particularly at excessively high speed, can clog up the tunnel. If this occurs:

- stop travelling with the machine, disengage the blades and stop the engine;
- remove the grass catcher;
- remove the accumulated grass clippings manually to unblock the tunnel; you can reach them from the exit of the collector channel.

⚠ WARNING! *This job must only be performed with the engine turned off.*

5.4.8 End of mowing

When you have finished mowing, disengage the blades, lower the engine speed and ride the machine with the cutting deck raised to its highest level.

5.4.9 End of work

Stop the machine, move the throttle to «SLOW» and turn off the engine by turning the key to «OFF».

When the engine has stopped, close the fuel valve.

▲ WARNING! *To avoid backfire, position the throttle on «SLOW» for 20 seconds before turning off the engine*

▲ WARNING! *Always take out the ignition key before leaving the machine unattended!*

IMPORTANT *To avoid depleting the battery, leave the key in the «OFF» position when the engine is not running.*

5.4.10 Cleaning the machine

After use, clean the outside of the machine and empty the grass-catcher or deflector shield, shaking to remove grass and other debris.

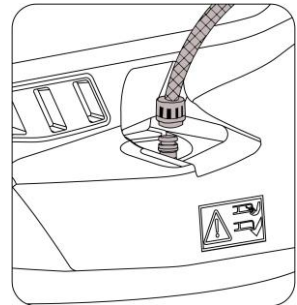
Clean the plastic parts of the body with a damp sponge using water and detergent, taking care not to wet the engine, any electrical components or the electronic circuit board located under the dashboard.

IMPORTANT *Never use hose nozzles or harsh detergents to clean the body panels or the engine!*

When cleaning the inside of the cutting deck and the tunnel, the machine must be on a solid surface with:

- the grass-catcher or rear deflector fitted;
- the operator seated;
- the engine running;
- the transmission in neutral;
- the blades engaged.

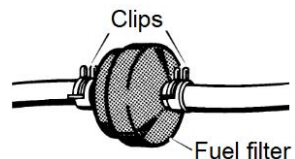
Connect a water hose to each of the pipe fittings one at a time and run water through each one for a few minutes, with the blades moving. When washing, the cutting deck should be lowered right down. Take off the grass-catcher, empty and rinse it, and then put it in a position where it can dry quickly



5.4.11 Storage and inactivity for long periods

If you intend not to use the machine for a long period of time (more than one month), disconnect the battery cables and follow the instructions in the engine instruction manual.

Empty the fuel tank by disconnecting the tube situated at the inlet of the fuel filter and follow the instructions in the engine manual



▲ WARNING! *Dry grass clippings are a fire risk. Carefully remove any dry grass clippings which may have collected around the engine, silencer or deck to prevent them from catching fire the next time the machine is used!*

Put the machine away in a dry, sheltered place and preferably underneath a cover.

IMPORTANT

The battery must be kept in a cool and dry place. Before a long storage period (more than one month), ensure the battery is well charged, and then recharge before using again.

The next time the machine is used, check that there are no fuel leaks from the tubes, fuel valve or carburetor.

5.4.12 Summary of main steps to follow when using the machine

To...	You must...
Start the engine	Open the fuel valve, ensure that all the starting criteria are met, and then turn the key
Go forward	push the forwards pedal down with the front of your right foot.
Brake or stop	Reduce the engine speed and press the brake pedal.
Reverse	Stop the machine with the hydrostatic transmission pedal in neutral, then press the reverse pedal with the heel of your right foot.
Cut the grass	Fit the catcher; increase the throttle; engage the blades; adjust the cutting height, press the forward pedal.
Unblock the tunnel	Stop the machine, disengage the blades and turn off the engine. Remove the catcher and clean the tunnel.
Finish mowing	Disengage the blades and reduce the engine speed.
Stop the engine	Reduce the engine speed, wait a few seconds, turn the key and close the fuel valve.
Store the machine (5.4.9)	Engage the parking brake, remove the key and wash the machine, the inside of the cutting deck, the tunnel and the grass-catcher

5.5 USE ON SLOPING GROUND

Only mow on slopes with gradients up to the maximum mentioned previously in the manual.

Lawns on a slope should be mowed moving up and down; never across them. When changing direction, take great care that the wheels facing up the slope. Avoid any obstacles (such as stones, branches, roots, etc.) that may cause the machine to slide sideways, tip over or make you lose control





DANGER! *REDUCE SPEED BEFORE ANY CHANGE OF DIRECTION ON*

SLOPES, and always apply the parking brake before leaving the machine at a standstill and unattended.



WARNING! *Always move forwards carefully on sloping ground to prevent the risk of tipping over. Reduce the forward speed before going on a slope, particularly downhill.*



DANGER! *Never use reverse to reduce speed going downhill: this could cause you to lose control of the vehicle, especially on slippery ground.*

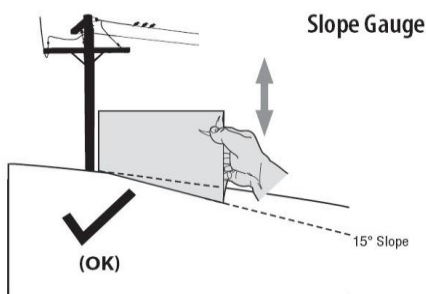


Figure 1

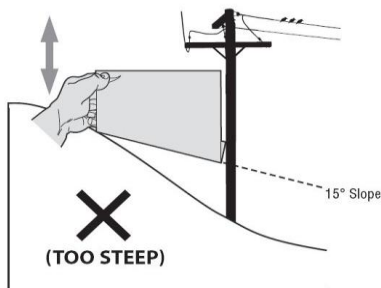


Figure 2



USE THIS SLOPE GAUGE TO DETERMINE IF A SLOPE IS TOO STEEP FOR SAFE OPERATION!

To check the slope, proceed as follows:

1. Remove this page and fold along the dashed line.
2. Locate a vertical object on or behind the slope (e.g. a pole, building, fence, tree, etc.)
3. Align either side of the slope gauge with the object (see Figure 1 and Figure 2).
4. Adjust the gauge up or down until the left corner touches the slope (see Figure 1 and Figure 2).

If there is a gap below the gauge, the slope is too steep for safe operation (see Figure 2 above)



WARNING! Slopes are a major factor related to tip-over and accidents which can result in injury or death. Do not operate machine on slope in excess of 15 degrees. Operation on any sloped surface requires extra caution.

5.6 TRANSPORTING



WARNING! *If the machine is transported on a truck or trailer, use suitable equipment for lifting and ensure sufficient able-bodied people help given the weight involved and the type of lifting system used. The machine must never be lifted by rope and tackle. During transport, close the fuel valve, lower the cutting deck, apply the parking brake and fasten the machine securely with ropes or chains to the hauler.*

5.7 LAWN MAINTENANCE

1. To keep a lawn green, soft and looking good, it should be cut regularly without damaging the grass. A lawn can be composed of different types of grass. If the lawn is cut frequently, grass and roots will grow more vigorously, forming a solid grassy bed. If the lawn is cut less frequently, this results in higher grass and weeds will begin growing

2. It is best to cut the grass when dry for the most effective and efficient cut

3. The blades must be in good condition and well sharpened so that the grass is cut straight without tearing that leads to yellowing at the ends.

4. The engine must run at full speed, both to ensure a sharp cut of the grass and to get the necessary thrust and airflow to push the cuttings through the collector channel.

5. The frequency of mowing should be in relation to the rate of growth of the grass. The grass should not be left to grow too much between one cut and the next.

6. During hot and dry periods, the grass should be cut a little higher to prevent the ground from drying out.

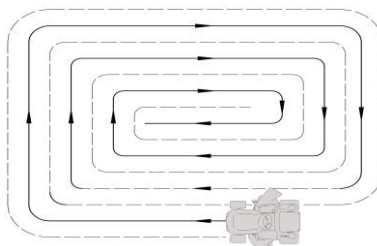
7. With one cut, you do not need to remove more than a third of the total height. If the grass is very tall, it should be cut twice in a twenty-four hour period – the first time with the blades at maximum height, and the second cut at the desired height.

8. When you mow large areas, start in a clockwise direction. After one or two rounds, mow in the opposite direction making left turns until finished

9. The appearance of the lawn will improve if you alternate cutting in both directions.

10. If the collector system tends to get blocked with grass, you should reduce the forward speed as it may be too high for the condition of the grass. If the problem persists, the probable causes are either badly sharpened blades or deformed wings.

11. Be very careful when mowing near bushes or kerbs as these could distort the horizontal position of the cutting deck and damage the edge of the deck and blades



6. MAINTENANCE

6.1 SAFETY RECOMMENDATIONS

⚠ WARNING! *Before cleaning or doing maintenance work, take out the ignition key and read the relevant instructions. Wear adequate clothing and work gloves for protection.*

⚠ WARNING! *Never use the machine with worn or damaged parts. Faulty or worn-out parts must always be replaced and not repaired. Use original Masport spare parts: Parts that are not of the same quality can damage the equipment and affect your safety and that of others*

IMPORTANT *Never dispose of used oil, fuel, batteries or other pollutants in unauthorized places!*

6.2 SCHEDULED MAINTENANCE

6.2.1 Programmed maintenance

Operation	Hours	Completed (Date or Time)							
1. MACHINE									
1.1 Check oil engine	Before each use								
1.2 Tyres pressure check	Before each use								
1.3 Safety checks & Controls	Before each use								
1,4 Checking damage on products	Before each use								
1.5 Clean machine	After each use								
1.7 Check of fastening and sharpness blades	Every 25 hours								
1.8 Transmission belt check	Every 25 hours								
1.9 Blade blet check	Every 25 hours								
1.10 Bolt and screw check	Every 25 hours								
1.11 General Lubrication	Every 25 hours								
1.12 Blade replacement	Every 100 hours								
1.13 Full maintenance review made by Authorized Dealer or Service Center)	Every year								

MAINTENANCE EN

2. ENGINE

2.1: First Oil change	Every 20 hours								
2.2 Engine oil change ⁽¹⁾	Every 50 hours								
2.3 Air filter cleaning ⁽¹⁾	Every 50 hours								
2.4 Check and adjust Spark Plug ⁽¹⁾	Every 100 hours								
2.5 Fuel tank and fuel filters cleaning	Every 100 hours								
2.6 Air filter replacement ⁽¹⁾	Every year								
2.7 Spark plug replacement	Every year								

1) See the engine manual for the full list and frequency of engine maintenance activities.

2) At the first signs of wear, contact your service dealer to replace the part.

3) General lubrication of all joints should also be carried out whenever the machine is going to be unused for a lengthy period of time

The above table is supplied to help you maintain your machine's safety and performance. It shows the primary maintenance and lubrication operations and their frequency. To the right of each item, there is a box where you can log the date or operating hours when the work was carried out.

⚠ WARNING!

All checks, adjustments and replacements not described in chapters 6.3 and 6.4 of this manual must be carried out by your Dealer or a specialized Service Centre. Both have the necessary knowledge and tools to ensure that the work is carried out correctly without affecting the safety of the machine.

6.2.2 Summary of main situations where servicing operation may be required

Whenever...	You will need to...
The blades vibrate	Contact Your Dealer
The blades tear the grass and the lawn becomes yellow	Contact Your Dealer
The cut is uneven	Align the cutting deck.
The blades engage in an abnormal way	Contact Your Dealer
The machine does not brake	Contact Your Dealer
Forward movement is erratic	Contact Your Dealer

6.2.3 Engine

IMPORTANT

Follow all the instructions in the engine manual.

To drain the engine oil, unscrew the oil plug. When refitting the plug, make sure the seal is positioned correctly.

6.2.4 Battery

The battery must be carefully maintained to ensure it lasts. It must always be charged:

- before using the machine for the first time;
- before leaving the machine unused for a long period;
- before starting up the machine after a long period of disuse.

Carefully read and observe the battery recharging instructions in the booklet provided with the battery. Failure to follow the instructions could permanently damage the battery cells.

A flat battery **must** be recharged as soon as possible.

IMPORTANT

*Recharging must be done using a battery charger at **constant voltage**.*

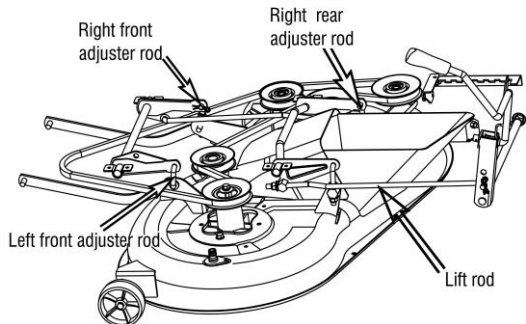
Other recharging systems can irreversibly damage the battery.

6.3 CHECKS AND ADJUSTMENTS

The cutting deck should be properly set to obtain a good cut.

NOTE

For achieving good results from cutting, the front part should always be 5-6mm lower than the rear.



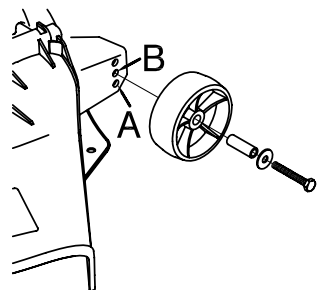
–Put the machine onto a flat surface and check the tyre pressures;

– Put 30 mm blocks under the front edge of the deck and 35 mm blocks under the rear edge, and then put the lifting lever into position «2» ;

– Adjust the left front adjuster rod , right front adjuster rod and right rear adjuster rod keep the deck just in contact with the blocks;

–Adjust the lift rod keep the deck just in contact with the blocks.

If required, you can change the position of the anti-scalp wheel to obtain a lower cut.



IMPORTANT

For an uneven or thick lawn, it is best to set the wheel in the hole «A».

In case of any doubts, do not hesitate to contact your retailer.

6.4 DISMANTLING AND REPLACEMENT

6.4.1 Replacing wheels

Stop the machine on flat ground and put a block under a load-bearing part of the frame on the side that the wheel is to be changed.

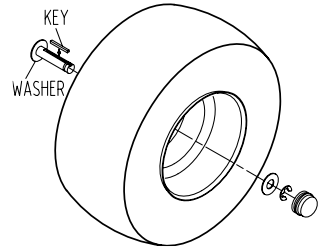
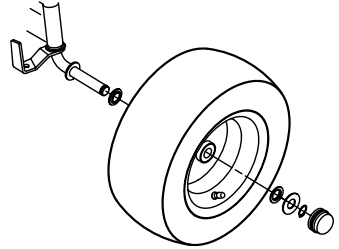
The wheels are held by a snap ring which can be eased off with a screwdriver.

NOTE

If you have to replace one or both rear wheels, ensure they have the same diameter, and check that the cutting deck is horizontal to prevent an uneven cut. You must make sure the key and washer are securely lodged in place.

IMPORTANT

Before remounting the wheel, apply grease to the axle. Put the snap ring and supporting washer back in place.



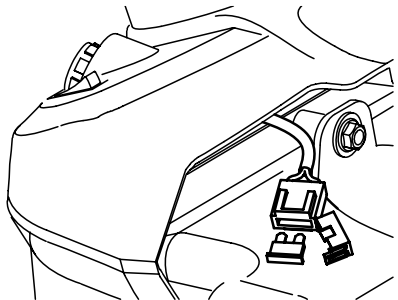
6.4.2 Replacing and repairing the tyres

The tyres are "Tubeless" and so all punctures must be repaired.

6.4.3 Replacing a fuse

The machine is fitted with 10A fuses. When it blows, the machine stops, the dashboard light switches off, and the battery gradually runs out, the machine will have difficulty starting.

Remove the fuse and replace with an identical fuse. Contact your service dealer for more information.



IMPORTANT

blown fuse must always be replaced by one of the same type and ampere rating, and never with one of another rating.

6.4.4 Dismantling, replacing and remounting the blades

⚠ WARNING! *Always wear work gloves when handling the blades. Before you inspect or remove the blades, stop the engine and disconnect the spark plug.*

⚠ WARNING! *Damaged or bent blades must be replaced; do not try to repair them!*

ALWAYS USE ORIGINAL BLADES FROM YOUR MASPORT SERVICE DEALER! Make sure the blades are correctly balanced. The two blades are different from each other and rotate in opposite directions. Make sure you replace like-for-like by matching the code stamped on each blade.

1. Dismantling

1a = Loosen the right handed thread (anti-clockwise)

1b = Loosen the left handed thread (clockwise)

2. Original spare parts

3. Replacing:

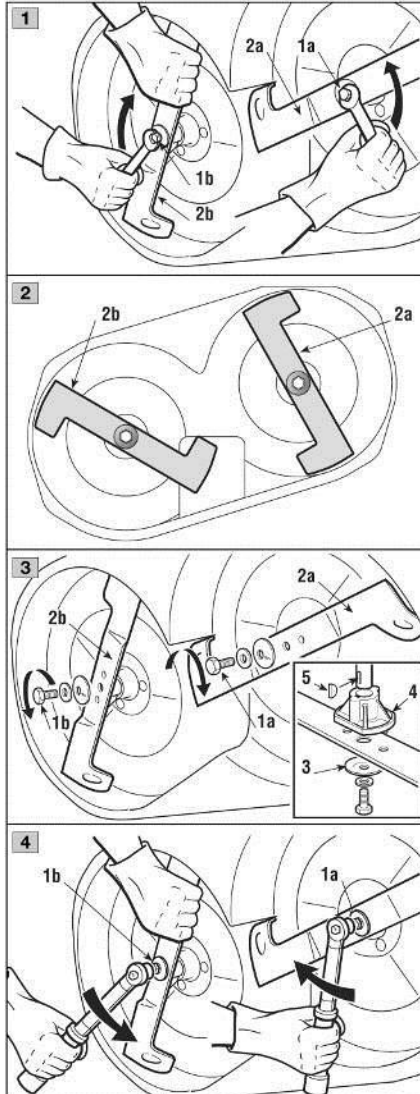
Check that the concave part of the Belleville washer (3) presses against the blade. Remount the shaft hubs (4), making sure that the keys (5) are securely lodged in place.

4. Tightening the screws

1a = Tighten right-handed thread (clockwise)

1b = Tighten left-handed thread (anti-clockwise)

Tighten with a torque wrench calibrated to 40-45 Nm.



6.4.6 Replacing the belt

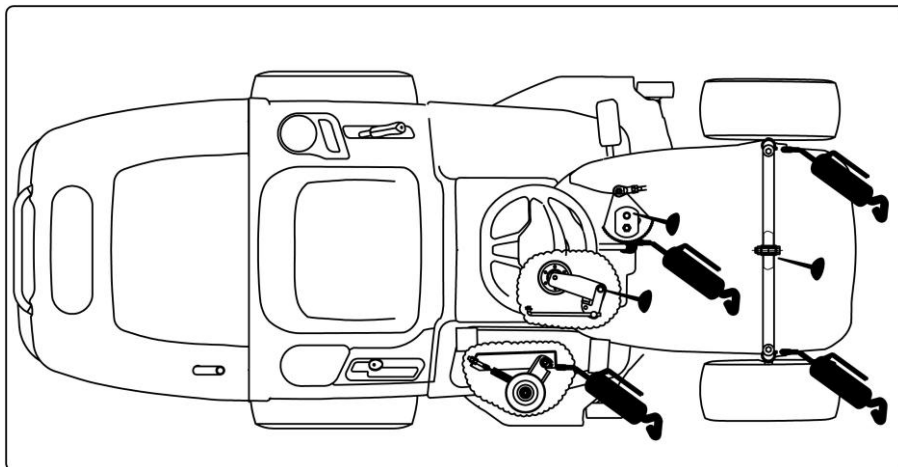
The belt replacement must be carried out at a Licensed Service Centre. Replace the belts as soon as they show obvious sign of wear!

⚠ WARNING! **ALWAYS USE GENUINE REPLACEMENT BELTS!**

6.5 LUBRICATION

Apply grease with an injector to the areas shown. Apply two or three shots of grease, and wipe off any excess.

Lubricate the areas shown with engine oil. Wipe the area clean, apply a few drops of oil, then wipe up any drops or spills.



IMPORTANT

Do not foul the belt or brake shoe or tire with grease or oil as this will damage them.

7. TROUBLESHOOTING



Danger
Injury hazard if engine is started inadvertently

Protect yourself against injury. Before carrying out any work on this mower:

- Switch off the engine.
- Remove the ignition key.
- Apply the parking brake.
- Wait until all moving parts have come to a standstill and the engine is cold
- Pull the spark plug connector off the engine so that the engine cannot inadvertently start.

Faults which occur while you are using your mower often have simple solutions which you may be able to rectify yourself. If you are in any doubt, however, your dealer or service center will be happy to provide assistance.

Problem	Possible cause(s)	Remedy
Lighting does not function	1. Headlight wire not connected.	Turn the key to «STOP» position and connect the headlight wire.
	2. Bulbs defective.	Turn the key to «STOP» position and replace the bulbs.
	3. Battery not connected correctly.	Connect red cable to the (+) battery terminal and black cable to the (–) battery terminal. (par. 3.4)
	4.Ignition switch defective	Replace the ignition switch
	5. Battery defective	Test and recharge or replace the battery
	6. Short-Circuit in wire harness	Contact your Dealer or Service center

Problem	Possible cause(s)	Remedy
Start motor will not turn engine	1. Starting conditions have not been met	Check that all starting conditions are met (par. 5.4.1)
	2. No fuel in fuel tank.	Turn the key to the «STOP» position and fill the fuel tank. (par. 5.3.3)
	3. Poor contact between cable and battery pole.	Check the connections.(par. 3.4)
	4. Battery flat or defective	Test and recharge or replace the battery.
	5. Fuse defective.	Replace fuse. If the fuse blows repeatedly, determine the cause (usually a short-circuit). (par. 6.4.3)
	6. Clogged air filter	Clean air filter.
	7. Spark Plug defective.	Check the connection of spark plug socket and test, clean or replace the spark plug.
	8. Brake pedal defective.	Contact your Dealer or Service center.
	9.Clutch/brake switch not pushed down.	Push the PTO Button down to the OFF position. (par. 4.3)
	10. Start relay defective	Replace the start relay.
	11.Ignition switch start defective	Replace ignition switch start.

Problem	Possible cause(s)	Remedy
Engine runs unevenly	1. Carburetor problem	Contact your Dealer or Service center.
	2. Air filter blocked.	Clean or replace the air filter. (See engine manual)
	3. Fuel tank ventilation blocked.	1. Check and replace the fuel filter if necessary; (see engine manual or contact your Dealer or Service center.) 2. Empty the fuel tank and fill with fresh fuel;
	4. Grass is too high	Reduce the travelling speed and/or raise the cutting height.
Engine feels weak	1. Air filter blocked.	Clean or replace the air filter. (See engine manual)
	2. Engine speed too low	Increase throttle setting.
	3. Travelling speed too high.	Set to a lower travelling speed.
	4. Spark Plug defective.	Replace the spark plug; see engine manual.
	5. Fuel tank ventilation blocked	1. Check and replace the fuel filter if necessary; (see engine manual or contact your Dealer or Service center.) 2. Empty the fuel tank and fill with fresh fuel;

Problem	Possible cause(s)	Remedy
Battery does not charge	1. Fuse defective.	Replace fuse. If the fuse blows repeatedly, determine the cause (usually a short-circuit). (par. 6.4.3)
	2. Poor contact between battery poles and cables.	Check the connections.(par. 3.4)
Machine doesn't move	1.Brake is engaged	Keep the brake pedal pressed down and release the parking brake, release the brake pedal slowly to start forward movement of the machine. (par. 5.4.2)
	2. Gearbox disengaged	Engage the gearbox. (par. 5.3.5)
	3.Drive belt detached	Fit belt in place.
	4.Drive belt defective or worn	Replace the drive belt.
Strong vibrations	1. Blades loose.	Check and tighten all the blades (see Torque tightening par. 6.4.4) or contact your Dealer or Service center.
	2. Engine loose.	Check and tighten all the engine and frame bolts
	3. Unbalance in one or both blades resulting from damage.	Contact your Dealer or Service center.
	4. Cutting-deck assembly is full of grass	Clean the cutting-deck assembly
	5.Engine mounting not securely tightened	Tighten engine mounting or contact your Dealer or Service center.
	6. Belt damaged	Replace the belt

Problem	Possible cause(s)	Remedy
Uneven or poor cutting results	1. Blades blunt or worn	Sharpen or replace mowing blades
	2. Different air pressures in tires on left and right side.	Check the tyre pressure. (par. 5.3.2)
	3. Cutting deck adjustment.	Check deck adjustment (6.3 or Contact your Dealer or Service center)
	4. Long and/or wet grass	Adapt cutting level and driving speed to the mowing conditions.
	5. Travelling speed is too high.	Set to a lower travelling speed.
	6. Grass stuck under cutting deck	Clean under the deck properly (Use a suitable accessory to access the underside of the cutting deck)
	7. Blade drive belt Slipping	Replace the blade drive belt
	8. Tunnel is blocked.	Remove the grass catcher and empty the discharge chute

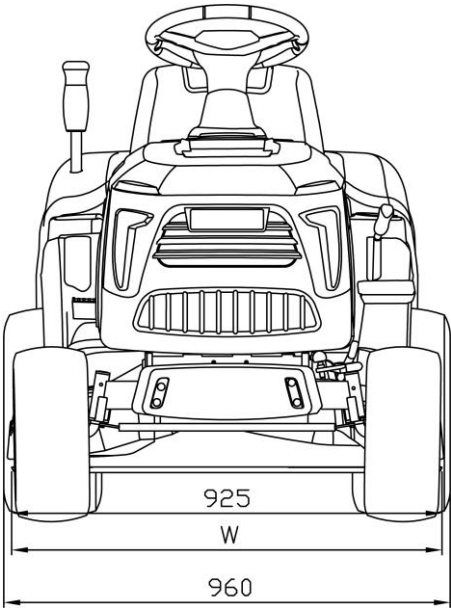
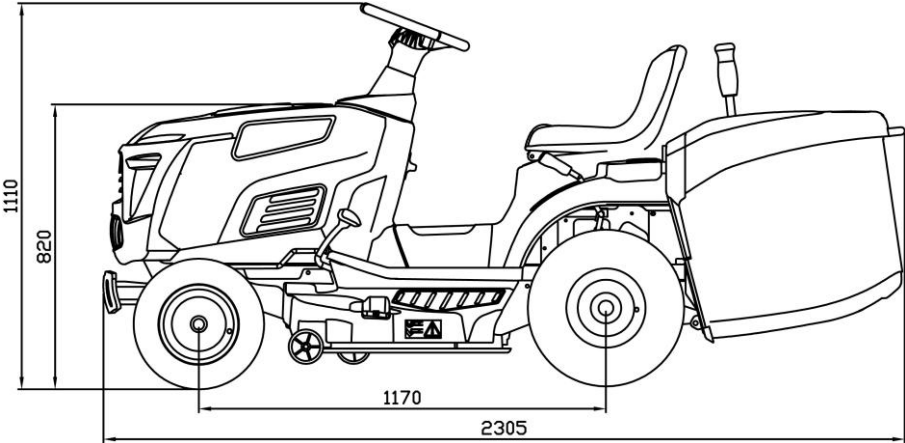
If problems persist after having performed the above operations, contact your Dealer or Service center.

8. SPECIFICATIONS

8.1 TECHNICAL DATA TABLE

Model		TTM102RH V-TWIN
Engine model		LC2P73F
Engine displacement		586 cm ³
Nominal power:		10.3 kW
Max. engine speed:		2600min ⁻¹
Blade model:		0606665 (left), 0606668 (right)
Cutting width		102 cm
Sound pressure level at the operator		L _{pA} : 87.6 dB(A),
		K _{pA} : 3 dB(A)
Measured sound power level		L _{WA} : 99.3 dB(A), K _{WA} : 1.11 dB(A)
Guaranteed sound power level (2000/14/EC)		L _{WA} : 100 dB(A)
Vibration	Hand-arm	a _h : 2.8 m/s ² , K _h : 1.5 m/s ²
	Whole body	a _h : 0.6 m/s ² , K _h : 1.5 m/s ²
Mass		196.5 kg
Driving speed		Forward:0-8.8 km/h, Reverse 0-4.5 km/h
Blade screw tightening torque		40–45 Nm
Cutting height (on 7 levels)		30 – 90 mm
Front wheels		15 × 6.00-6
Rear wheels		18 × 8.50-8
Front wheel inflation pressure		1.2 bar
Rear wheel inflation pressure		1.0 bar
Electrical system		12 Vd.c.
Battery		18 Ah
Min. turning radius		45 cm
Capacity of fuel tank		7.5L

8.2 Machine Dimensions



Model	TTM102RH V-TWIN
W(mm)	990

For Garden Products

OWNER'S WARRANTY

IMPORTANT. Please read the Owner's Manual and Warranty before using this product. The Warranty does not cover damage due to misuse or failure to follow the instructions.



THE MASPORT EXPRESS WARRANTY

RIDE-ON PRODUCTS

1.

Warranty provider

1.1. The Express Warranty set out below is provided by Masport Limited, a New Zealand company located at 320 Ti Rakau Drive, East Tamaki, 2013, Auckland, New Zealand. For any questions regarding this Express Warranty or to make a warranty claim call 0800 627 767 (New Zealand) or 1300 366 225 (Australia), or contact your local Masport Specialist retailer.
2.

General warranty coverage

2.1. The New Zealand Consumer Guarantees Act 1993 ("New Zealand Consumer Act") and the Australian Competition and Consumer Act 2010 (including the Australian Consumer Law 2011) ("Australian Consumer Law"), as well as other laws in each of those jurisdictions, guarantee or imply certain conditions, warranties and undertakings, and give you other legal rights, in relation to the quality and fitness for purpose of our products sold in New Zealand and Australia respectively.

2.2. For products sold in New Zealand, these conditions, warranties and undertakings cannot be modified or excluded by any contract, except in those circumstances contemplated by section 43(2) of the New Zealand Consumer Act.

2.3. For products sold in Australia, our goods come with guarantees that cannot be excluded under the Australian Consumer Law. You are entitled to a replacement or refund for a major failure and for compensation for any other reasonably foreseeable loss or damage. You are also entitled to have the goods repaired or replaced if the goods fail to be of acceptable quality and the failure does not amount to a major failure. What constitutes a major failure is set out in the Australian Consumer Law.
3.

Express Warranty

3.1. Where the Product is for Personal Use, Masport will repair or replace (at Masport's sole option) each Product Component in the table below, that suffers from a material defect in workmanship or materials from the date the Product is originally purchased until the end of the warranty period set out in the table below for each Covered Product Component .

Covered Product Components	Domestic
Battery	90 Days
Engine & Transmission	See Manufacturers Warranty for these Parts
Masport TTM Series Rideon	2 years, plus 1 year upon registration (3 years total)

3.2. Despite the warranty period listed above, where the Product is used for business, commercial, industrial, institutional, rental or other income-producing purposes, the warranty period for each Product is 3 months from the date the Product is originally purchased.

3.3. For both the Express Warranty for Personal Use and Commercial Use:

(a) the Express Warranty is subject to Masport firstly verifying the existence of the material defect and determining that the warranty claim is valid. Any repaired or replaced product will be covered by the Express Warranty for the remainder of the original warranty or usage period only; and

(b) The repair or replacement by Masport may be performed by a Masport agent or Specialist Retailer. You will not be charged for any labour costs involved in the replacement or repair, but you must bear the cost of transporting or delivering the Product to and from the location of the Masport agent or Specialist Retailer where the warranty claim is made.

- 3.4. Masport warrants that repair facilities and spare parts will be made available for each Product only from the date the Product is originally purchased until the end of the applicable warranty period as set out in clauses 3.1 and 3.2, but for no longer period.

4. Exclusions from Express Warranty

- 4.1. The Express Warranty does not apply where any defect, malfunction or failure is caused or contributed to by any of the following:
- (a) engines or transmissions as these are protected by their manufacturers' warranties - refer to the Engine Manufacturer's Warranty in the Engine/Owner's Manual supplied with your Ride-on lawnmower;
 - (b) failure to follow the fuel selection instructions, engine and product operating and maintenance instructions;
 - (c) modification, repairs or alteration of the Product carried out by persons other than authorised Masport service agents;
 - (d) acts or omissions by anyone other than Masport after the Product has left Masport's control;
 - (e) normal wear and tear;
 - (f) accidental damage, neglect, misuse;
 - (g) any event outside of Masport's reasonable control, including without limitation, adverse weather conditions;
 - (h) sharpening or setting of blades; or
 - (i) pre-delivery assembly of the Product by anyone except for Masport, Masport authorised service agents or any other person authorised by Masport.

5. Express Warranty in addition to consumer protection laws

- 5.1. Despite anything else in this warranty card, nothing in this warranty card will exclude, limit or modify any Consumer Protection Warranty or any liability of Masport imposed by applicable law if to do so would be unlawful or make any part of this warranty card void or voidable.
- 5.2. The Express Warranty is in addition to any Consumer Protection Warranty that may apply, for example, under the New Zealand Consumer Act or the Australian Consumer Law, or under the laws of the place where the Product was purchased. To the extent permitted by applicable law, Masport's liability for breach of any warranty, term, condition, guarantee or similar that cannot be excluded under the New Zealand Consumer Act or Australian Consumer Law (other than those under sections 51 – 53 of the Australian Consumer Law, to the extent applicable) is limited (at Masport's sole option) to Masport repairing or replacing the relevant Product or Product Component or paying for such repair or replacement.

6. No other warranties or liability

- 6.1. Except as otherwise provided in the Express Warranty, all express or implied warranties, guarantees, conditions or terms in relation to the Product and Product Components (other than those which cannot be excluded or limited under the New Zealand Consumer Act, the Australian Consumer Law or the laws of the place where the Product is purchased) are expressly excluded to the extent legally permitted.
- 6.2. All statements, technical information and recommendations about the Product and Product Components are believed to be reliable, but do not constitute a guarantee or warranty. No statements, representations or recommendations other than those contained in the official technical information published by Masport, will bind Masport, unless made in writing signed by an authorised representative of Masport.
- 6.3. Subject to Clause 5, in no event will Masport be liable (whether in contract, tort, negligence or in any other way) for;
- (a) loss of profits or savings, loss of goodwill or opportunity, loss of production or wasted time; or
 - (b) loss, damage, cost or expense of any kind whatsoever which is indirect, consequential, or of a special nature, arising directly or indirectly from the Product, even if Masport had been advised of the possibility of such damages.
- 6.4. Subject to Clause 5, in no event will Masport's total liability under any claim of whatever nature arising directly or indirectly from the Product exceed the price you paid for the Product.
- 6.5. This warranty card embodies the entire agreement between you and Masport in relation to the subject matter of this warranty card and supersedes all prior understandings, communications and representations between you and Masport, whether oral or written. No amendment to this warranty card will be effective unless in writing and signed by an authorised representative of Masport. You may not assign or transfer the Express Warranty without the prior written consent of Masport. This warranty card will be governed by the law of New Zealand for Products purchased in New Zealand and the laws of Australia for Products purchased in Australia. You and Masport will be subject to the non-exclusive jurisdiction of the New Zealand and Australian courts.

7. How to obtain service for a faulty Product

- 7.1. You must return the Product to the place of purchase or any Masport specialist retailer, along with reasonable evidence of the date the Product was purchased, for example, an original receipt.
- 7.2. Masport or its agent will assess the claim and if accepted, will repair or replace the Product or Product Component in accordance with the normal practices of the relevant Masport service agent.
- 7.3. All claims under any Express Warranty must be made within the relevant warranty period or usage period.

8. Definitions

- In this warranty card:
- 8.1. **"Commercial Use"** means any use of the Product for business, commercial, industrial, institutional, rental or other income-producing purposes;
- 8.2. **"Consumer Protection Warranty"** means any warranty, guarantee, term, condition, right or remedy implied or imposed by applicable law;
- 8.3. **"Express Warranty"** means the Express Warranty for Personal Use set out in Clause 3.1 and the Express Warranty for Commercial Use set out in Clause 3.2;
- 8.4. **"Masport"** means Masport Limited, a New Zealand company located at 320 Ti Rakau Drive, East Tamaki, 2013, Auckland, New Zealand with an Australian office located at 27 Commercial Drive, Dandenong South, Victoria 3175, Australia;
- 8.5. **"Personal Use"** means any use that is not Commercial Use;
- 8.6. **"Product"** means the Masport product accompanying this warranty card;
- 8.7. **"Product Component"** means each component of the Product set out in the table under clause 3.1, excluding engines and transmissions; and
- 8.8. **"You"** means the original purchaser of the Product.

Thank you for purchasing your Masport product. We know that you'll enjoy it!
To register your product warranty, simply visit our website: www.masport.com.

Failure to register your product warranty will not affect your rights under any Consumer Protection Warranty, however registration may help Masport deal with any warranty claim more efficiently.



Masport Limited
320 Ti Rakau Drive, East Tamaki
Auckland 2013
New Zealand
P: 0800 627 767

Masport Australia Pty Limited
27 Commercial Drive, Dandenong South
Braeside, South Victoria 3175
Australia
P: 1300 366 225