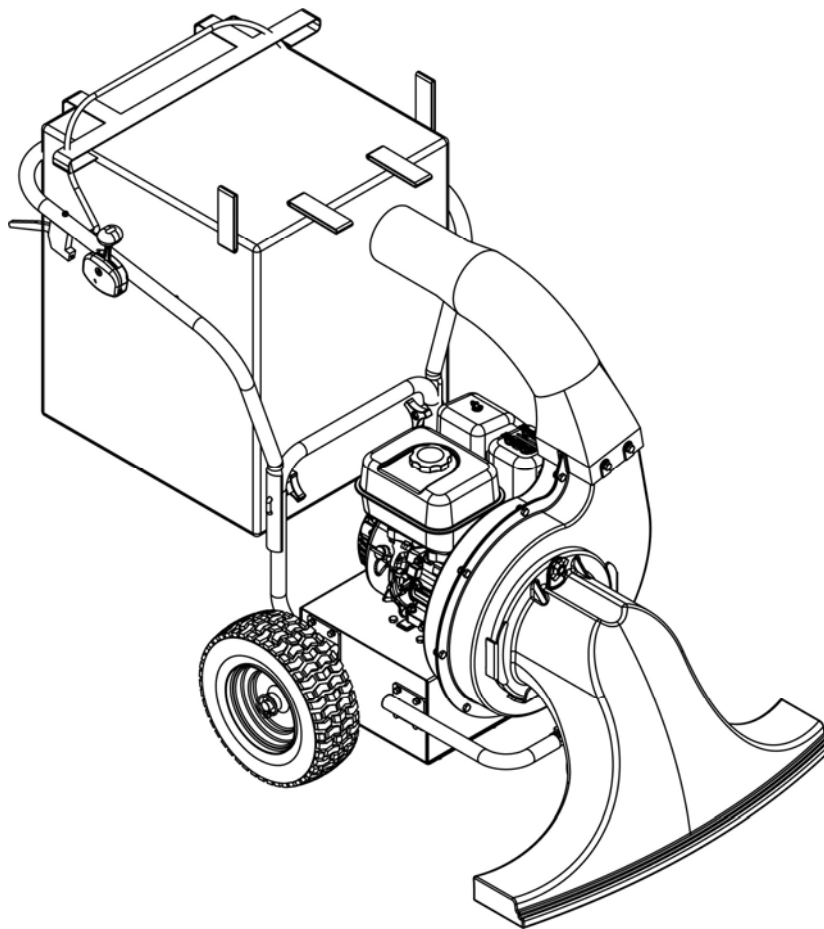


BWM[®] Products

LEAF BLOWER VACUUM



BV200H Series

Operator's Manual

SAVE THESE INSTRUCTIONS FOR FUTURE REFERENCE

Table of Contents

Safety Rules	3-5
Controls and Features Identification	6
Component Parts	7
Assembly Instructions.....	8-11
Operation Instructions.....	12-15
Specifications	16
Illustrated Parts List.....	17-20

Safety Rules

To ensure maximum safety and best performance, and to gain knowledge of the product, it is essential that you and any other operator of the machine read and understand the contents of this manual before the engine is ever started.

This is the safety alert symbol. It is used to alert you to potential personal injury hazards. Obey all safety messages that follow this symbol to avoid possible injury or death.

Improperly using or maintaining this machine could result in injury or death. To reduce this potential, comply with the following safety instructions.



**Engine exhaust contains carbon monoxide, an odorless, deadly poison that can kill you.
Do not run the engine indoors or in an enclosed area.**

General Safety

Training

- Read this operator's manual carefully. Be thoroughly familiar with the controls and the proper use of the machine before starting it.
- Never allow children to operate the machine. Local regulations may restrict the age of the operator.
- Never allow adults unfamiliar with these instructions to operate the machine.
- Never use the machine while people (especially children) or pets are nearby. Stop the machine if anyone enters the area.
- Tragic accidents can occur if the operator is not alert to the presence of children. Children are often attracted to the machine. Never assume that children will remain where you last saw them.
- Keep children out of the work area and under the watchful care of a responsible adult.
- Be alert and turn the machine off if children enter the area.
- Use extra care when approaching blind corners, shrubs, trees, or other objects that may obscure vision.
- Keep in mind that the operator or user is responsible for accidents or hazards occurring to other people or their property.
- See the manufacturer's instructions for proper operation and installation of accessories. Use only the accessories that are approved by the manufacturer.

Preparation

- While operating, always wear protective footwear and long trousers.
- Do not operate the machine when barefoot or wearing open sandals.
- Always wear safety goggles or safety glasses with side shields when operating the machine.
- Warning: Gasoline is highly flammable. Take the following precautions:
 - Store fuel in containers specifically designed for this purpose.
 - Refuel outdoors only and do not smoke while refueling.
 - Add fuel before starting the engine. Never remove the cap of the fuel tank or add gasoline while the engine is running or when the engine is hot.
 - If gasoline is spilled, do not attempt to start the engine. Move the machine away from the area of spillage to avoid creating any source of ignition until the gasoline vapors have dissipated.
 - Replace all fuel tank and container caps securely.
 - If you must drain the fuel from the fuel tank, do it outdoors.
- Replace faulty mufflers.
- Before using, always visually inspect the machine for wear or damage. Replace worn or damaged parts.

Operation

- Do not operate the engine in a confined space where dangerous carbon monoxide fumes can collect.
- Operate only in daylight or in good artificial light.
- Always be sure of your footing on slopes.
- Walk; never run.
- Keep a firm hold on the handle.
- Exercise caution when changing the direction on slopes.
- Do not operate on steep slopes.
- Never operate the machine with damaged or missing guards or shields, or without safety devices (such as blower tube or debris bag) in place.
- Disengage the traction drive lever before starting the engine.
- Do not put your hands or feet near or under the snout. Keep clear of the snout and blower tube (When installed) at all times.
- Stop the engine and disconnect the spark-plug wire:
 - before clearing blockages
 - before checking, cleaning, or working on the machine
 - before changing from vacuum to blower or blower to vacuum
- Stop the engine
 - Whenever you leave the machine
 - Before refueling
- Shut the engine off and wait until the impeller comes to a complete stop before removing the debris bag.
- Do not operate the machine while under the influence of alcohol or drugs.
- If the machine should start to vibrate abnormally, stop the engine and check immediately for the cause. Vibration is generally a warning of trouble.
Do not operate near drop-offs, ditches, or embankments. You could lose your footing or balance.
Do not operate on wet grass. Reduced footing could cause slipping.

Maintenance and Storage

Keep all nuts, bolts, and screws tight to ensure that the machine is in safe working condition. Never store the machine with gasoline in the tank inside a building where fumes may reach an open flame or spark.

Allow the engine to cool before storing the machine in any enclosure.

To reduce the fire hazard, keep the engine, muffler, and gasoline storage area free of grass, leaves, or excessive grease.

Check the debris bag frequently for wear or deterioration.

Replace worn or damaged parts.

Use extra care when handling gasoline; gasoline vapors are explosive.

Keep the machine free of grass, leaves, or other debris buildup. Clean up any oil or fuel that spills. Stop and inspect the machine if you strike an object. Repair the machine, if necessary, before starting the engine.

Debris bag components are subject to wear, damage, and deterioration, which could expose moving parts or allow objects to be thrown. Frequently check the components and replace them with the manufacturer's recommended parts when necessary.

Do not change the speed settings on the engine.

If you must drain the fuel from the fuel tank, do it outdoors.

To ensure the best performance and safety, purchase only genuine BWM replacement parts and accessories.

Maintain or replace safety and instruction decals when necessary

Sound Pressure Level

This unit has an equivalent continuous A-weighted sound pressure at the operator ear of 97 dB(A), based on measurements of identical machines per procedures described in EN11201.

Sound Power Level

This unit has a sound power level of 107 dB(A), based on measurement of identical machines per procedure described in EN11904.

Vibration Level

This unit has a maximum hand-arm vibration level of 6.4 m/s², based on measurements of identical machines per procedures described in EN1033.

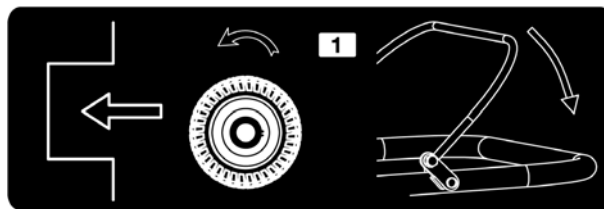
Safety and Instructional Decals



Safety decals and instructions are easily visible to the operator and are located near any area of potential danger. Replace any decal that is damaged or lost.

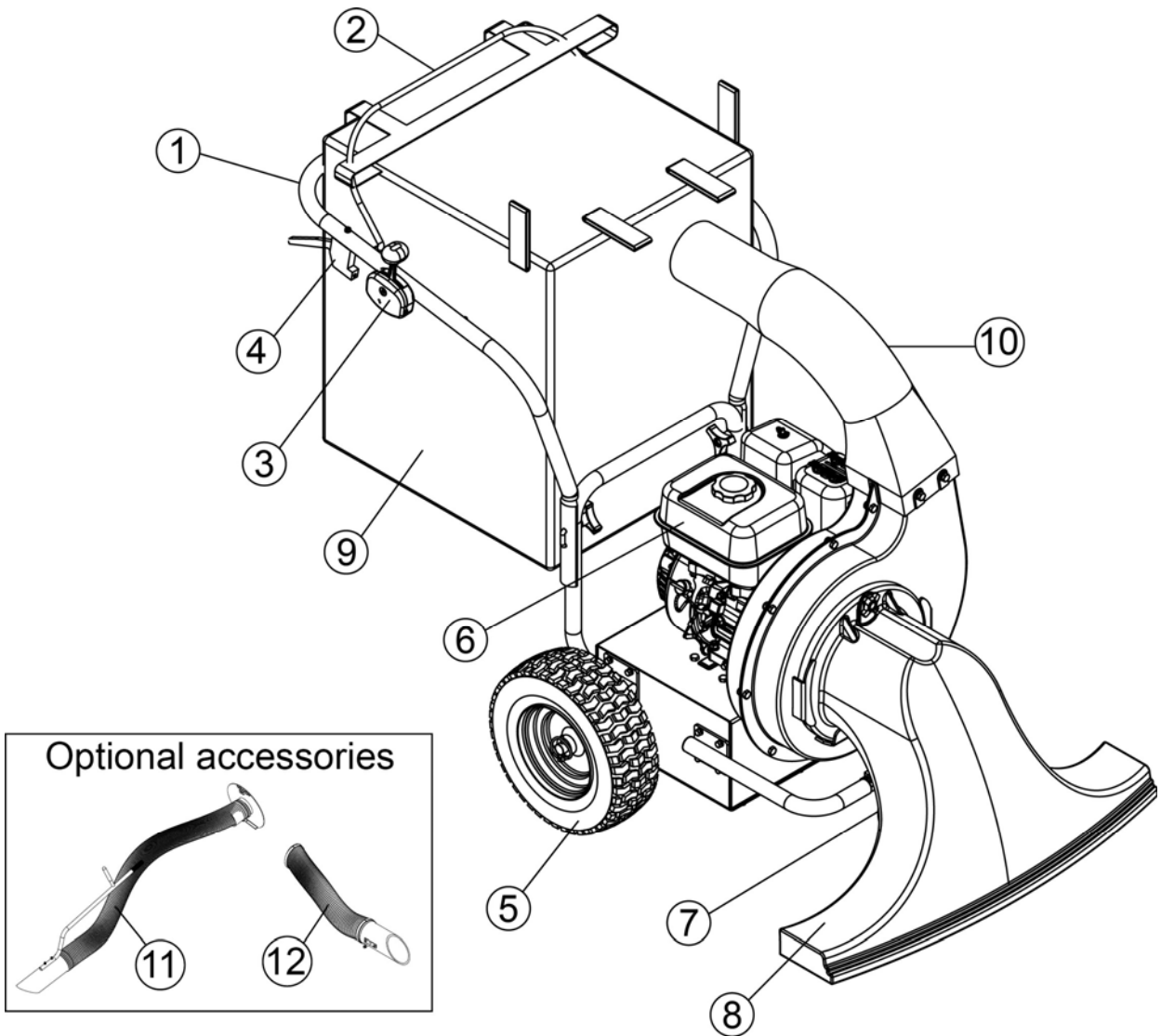


1. Warning – Read the Operator's Manual.
2. Thrown object hazard – Stay a safe distance from the machine.
3. Warning – Stop the engine, remove the wire from the spark plug, and read the instructions before servicing or performing maintenance.
4. Cutting/dismemberment hazard, impeller – Stay away from moving parts.



1. To engage the traction drive, move the traction drive lever to the handle.

Controls and Features Identification

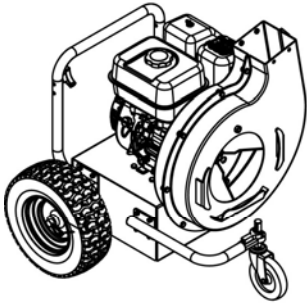


- 1) Push Handle
- 2) Traction Drive Level
- 3) Throttle Switch
- 4) Caster Height Adjustment Handle
- 5) Wheel
- 6) Engine
- 7) Swivel Caster
- 8) Vacuum Snout
- 9) Debris Bag
- 10) Ventilation Pipe

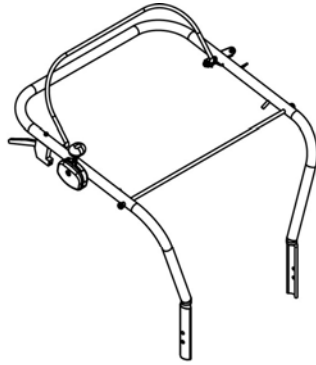
Optional accessories:

- 11) Vacuum Pipe Assembly
- 12) Blow Pipe Assembly

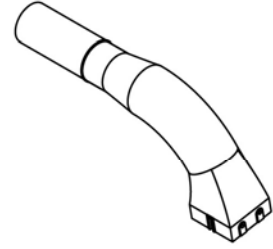
Component Parts



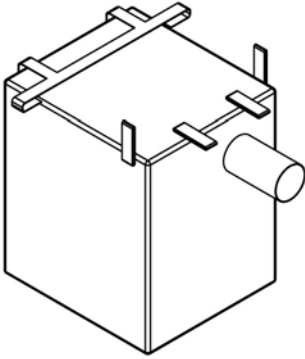
Frame
1pc



Handle Assembly
1pc



Ventilation Pipe
1pc



Debris Bag
1pc

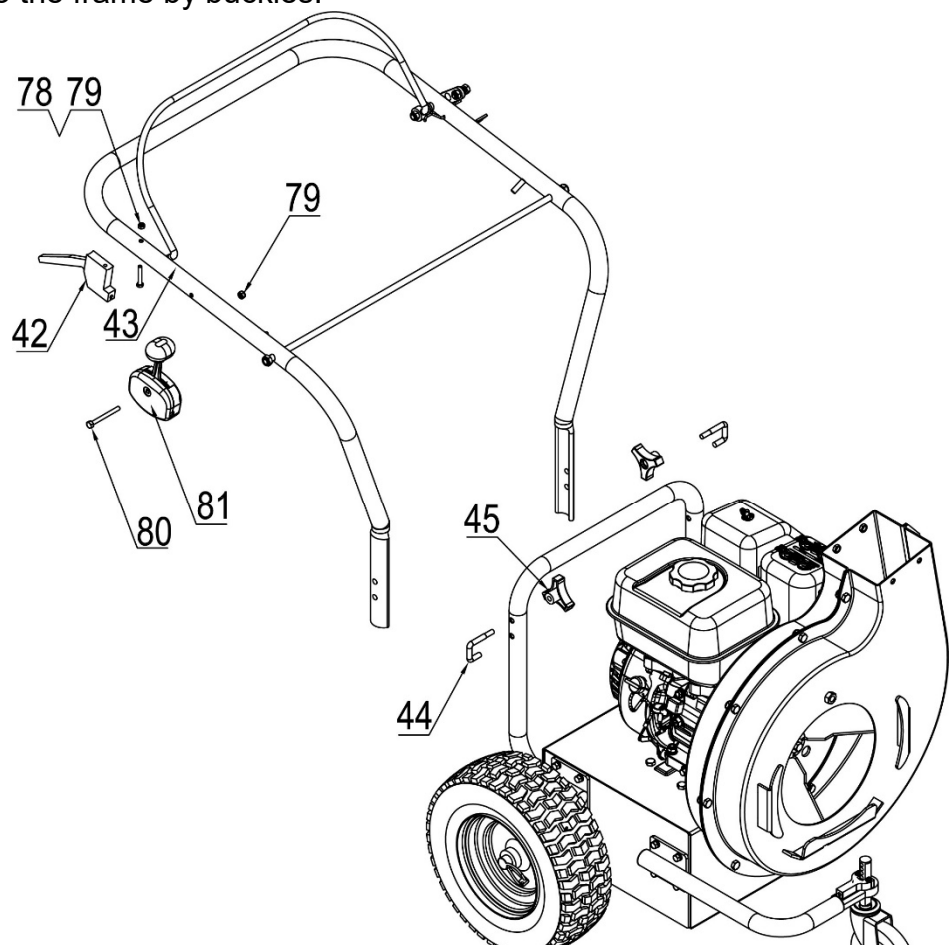


Vacuum Snout
1pc

Assembly Instructions

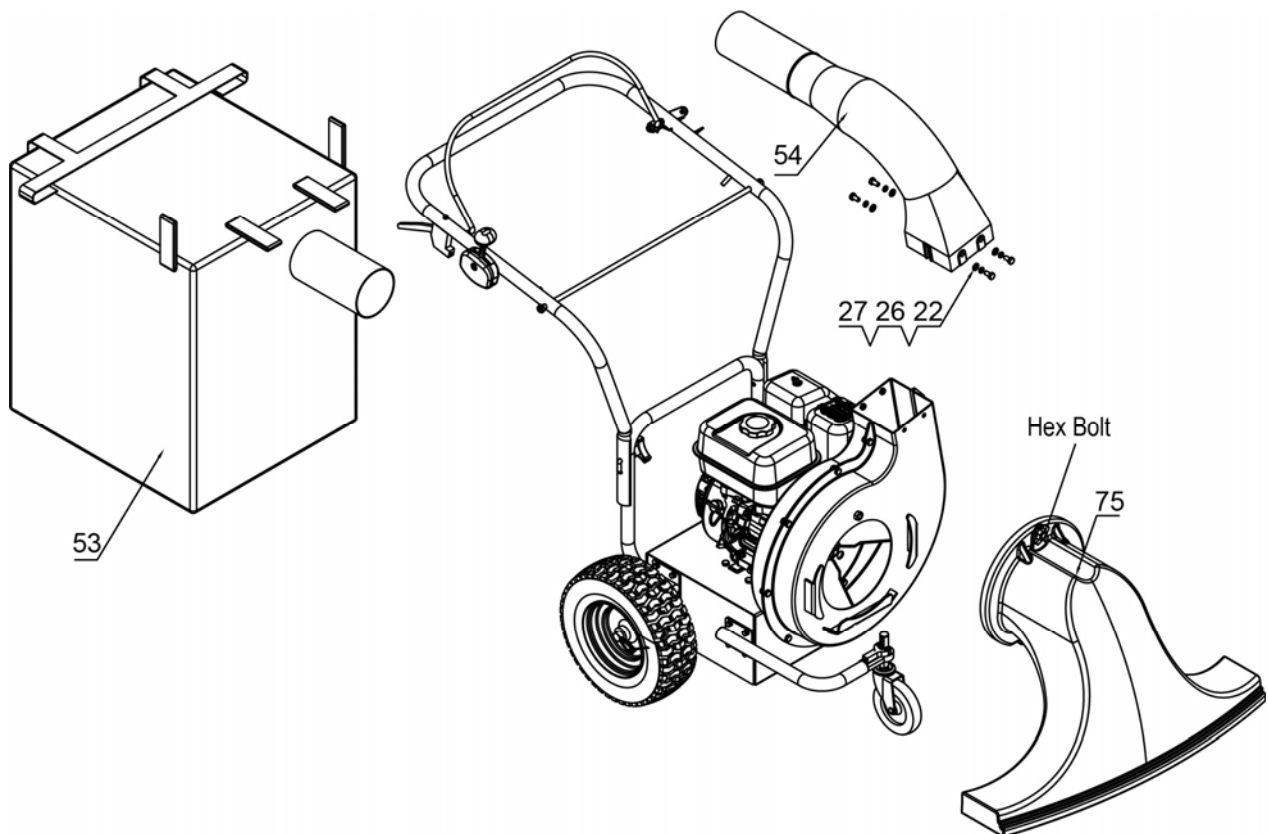
Step 1

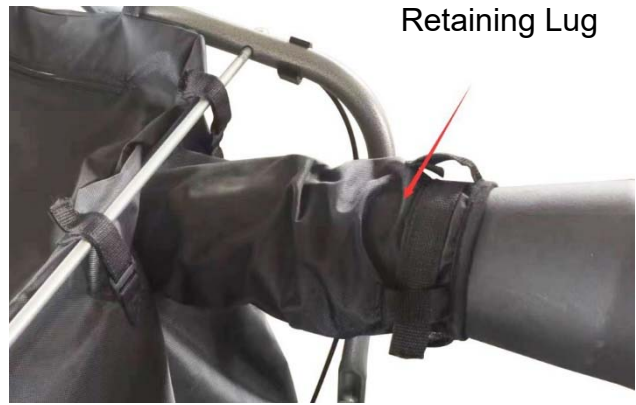
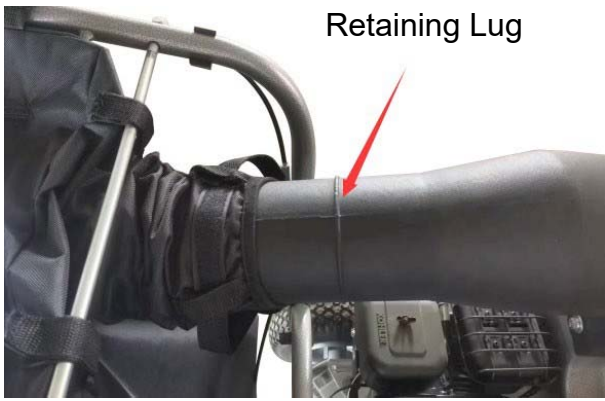
1. Take the frame and handle assembly (#43) out of the package then remove two sets of hand wheels (#45) and U-screws (#44). Attach handle assembly to the frame by reinstalling items #45 and #44.
2. Remove the nut (#79) and bolt (#80) from handle then attach the throttle switch (#81) to the handle by reinstalling items #79 and #80.
3. Remove the nut (#79) and bolt (#78) from handle then attach caster height adjustment handle (#42) to the handle by reinstalling items #79 and #78.
4. Fasten the cable to the frame by buckles.



Step 2

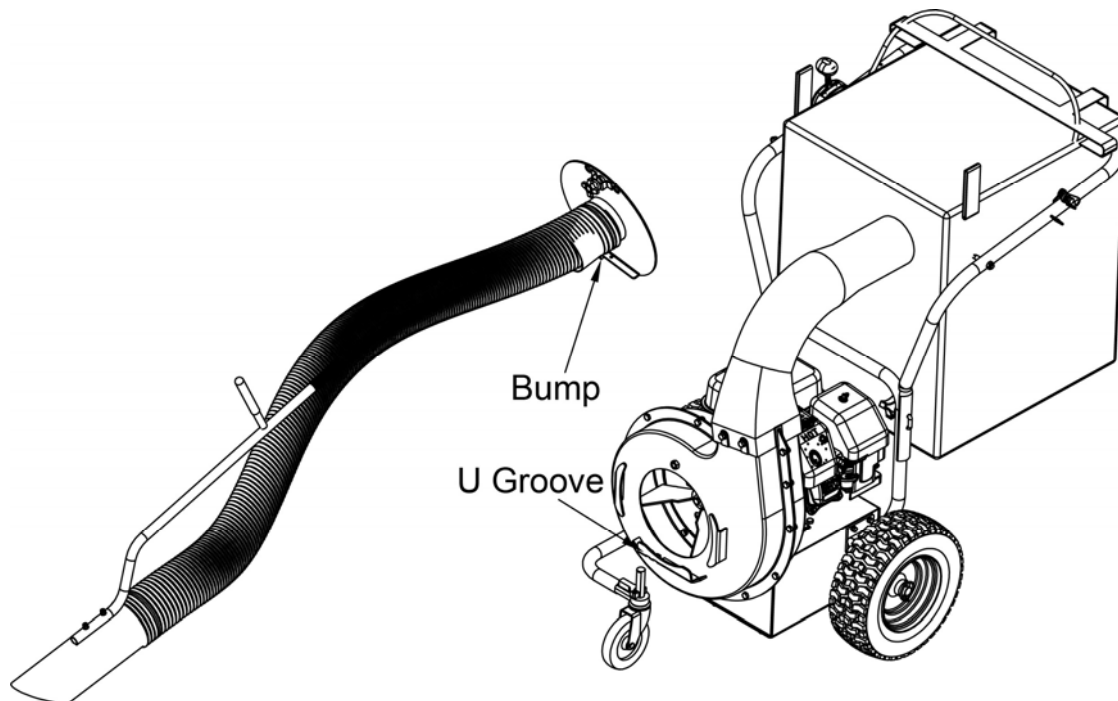
1. Attach vacuum snout (#75) to the vacuum snout mounting plate, tighten it with hex bolt on the vacuum snout.
2. Attach the ventilation pipe (#54) to the frame using lock washer Ø8 (#22), large flat washer Ø8 (#26), and hex bolt M8x20 (#27).
3. Put the strap of debris bag (#53) on the handle, pull the side straps into the retaining lug, then put straps to the front cross-bar using Velcro.
4. Put the mouth of debris bag to the ventilation pipe tightly using Velcro.



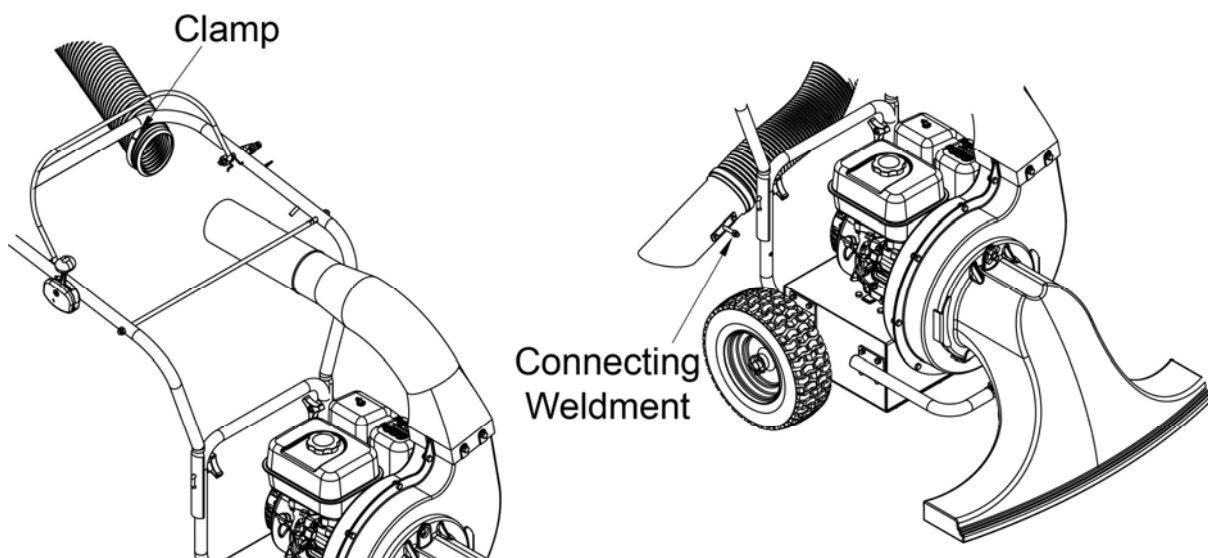


OPTIONAL VACUUM PIPE AND BLOWPIPE - YOU CAN CHOOSE DIFFERENT USAGE METHODS AND FUNCTIONS ACCORDING TO YOUR REQUIREMENTS.

Loosen hand wheel then remove vacuum snout, insert bump of connecting seat into U groove, then tighten with hand wheel.



Attach blowpipe assembly to the ventilation pipe using clamp, pass the screw of connecting weldment through the hole in the frame tube, then tighten the nut according to the required blow angle.



Operation Instructions

Before operating, check the fuel and oil level, and remove debris from the machine. Also, ensure that the area is clear of people and debris.

Adding Fuel



In certain conditions, gasoline is extremely flammable and highly explosive. A fire or explosion from gasoline can burn you and others and can damage property.

- Fill the fuel tank outdoors, in an open area, when the engine is cold. Wipe up any gasoline that spills.
- Do not fill the fuel tank completely full. Add gasoline to the fuel tank until the level is 1/4 to 1/2 inch (6 to 13mm) below the bottom of the filler neck. This empty space in the tank allows gasoline to expand.
- Never smoke when handling gasoline, and stay away from an open flame or where gasoline fumes may be ignited by a spark.
- Store gasoline in an approved container and keep it out of the reach of children. Never buy more than a 30-day supply of gasoline.
- Always place gasoline containers on the ground away from your vehicle before filling.
- Do not fill gasoline containers inside a vehicle or on a truck or trailer bed because interior carpets or plastic truck bed liners may insulate the container and slow the loss of any static charge.
- When practical, remove gas-powered equipment from the truck or trailer and refuel the equipment with its wheels on the ground.
- If this is not possible, then refuel such equipment on a truck or trailer from a portable container, rather than from a gasoline dispenser nozzle.
- If a gasoline dispenser nozzle must be used, keep the nozzle in contact with the rim of the fuel tank or container opening at all times until fueling is complete.

Use unleaded 91 fuel.

Important: Do not use methanol, fuel containing methanol, or fuel containing ethanol because the fuel system could be damaged. Do not mix oil with the fuel.

Using Stabilizer / Conditioner

Use a fuel stabilizer/conditioner in the traction unit to provide the following benefits:

- Keeps the fuel fresh during storage of 90 days or less. For longer storage it is recommended that the fuel tank be drained.
- Cleans the engine while it runs.
- Eliminates gum-like varnish buildup in the fuel system, which cause hard starting.

Important: Do not use fuel additives containing ethanol or methanol.

Add the correct amount of fuel stabilizer/conditioner to the fuel.

Note: A fuel stabilizer/conditioner is most effective when mixed with fresh fuel. To minimize the chance of varnish deposits in the fuel system, it is recommended to use fuel stabilizer at all times.

Filling the Fuel Tank

1. Park the machine on a level surface and stop the engine.
2. Allow the engine to cool.
3. Clean around the fuel tank cap and remove it.
4. Add unleaded 91 fuel to the fuel tank, until the level is 1 inch (2.5 cm) below the bottom of the filler neck.

Important: This space in the tank allows gasoline to expand. Do not fill the fuel tank completely full.

5. Install the fuel tank cap securely.
6. Wipe up any gasoline that may have spilled.

Checking the Oil Level

Important: *The machine is shipped without oil in the crankcase. You must fill the crankcase with 0.6 litre (600 mL) of Honda 10W30 grade engine oil. Severe engine damage will result if you attempt to run it without oil.*

1. Park the machine on a level surface and stop the engine.
2. Allow the engine to cool.
3. Clean around the oil dipstick.
4. Pull out the dipstick and wipe the metal end clean with a cloth.
5. Insert the dipstick fully into the oil sump without tightening it.
6. Remove the dipstick and look at the metal end.
7. If the oil level is low, slowly pour only enough oil into the dipstick tube to raise the level to the full mark.

Important: Do not overfill the crankcase with oil because the engine may be damaged.

8. Replace and tighten the dipstick.



An uncovered discharge opening will allow objects to be thrown in operator's or bystander's direction which may cause serious injury.

Never operate the vacuum unless the bag is installed.



The traction belt drive pulley is rotating whenever the engine is running, even when the traction drive is disengaged. Contact with the pulley could cause severe injury. Stay away from moving pulleys and other parts.

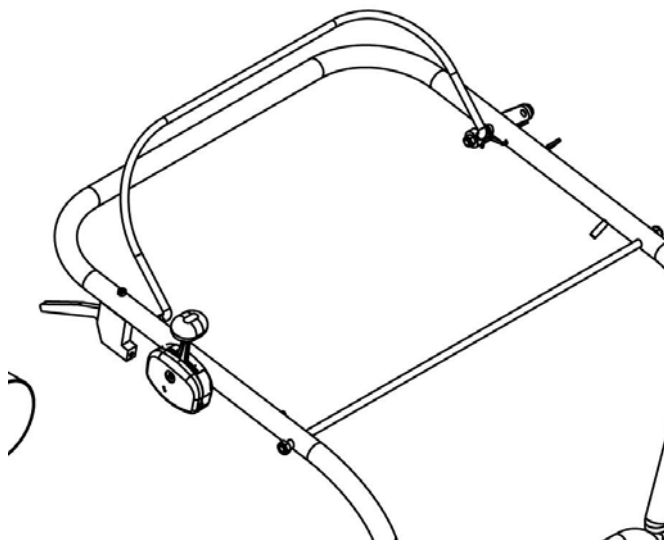
Adjusting the Intake Housing Height

You can adjust the clearance between the air intake housing and the ground by moving height adjustment control to the desired position. Set the height to low (L) for vacuuming hard surfaces such as sidewalks or driveways and to high (H) for thick lush turf with a heavy covering of leaves or clippings. The vacuum will work best when you keep the intake as close to the ground as is practical for the task you are performing.

1. Stop the engine.
2. Tip the machine slightly to the rear to take the weight off the castor wheels while adjusting.
3. Move the height adjustment control forward to lower the intake housing; move it to the rear to raise the housing.
4. Return the castor wheels to the ground.

Driving the Machine Forward

Hold the traction drive lever against the handle to move forward. Release the traction drive lever to stop forward motion.



Using the Debris Bag

Emptying the Debris Bag

When the debris bag is full, empty it as follows:

Note: *You do not need to remove the bag to empty it.*

1. Drive to the location where you want to dump the debris.
2. Stop the engine.
3. Open the back or top side of the bag and dump the contents
4. Close the bag before starting the engine.



A worn debris bag could allow small stones and other similar debris to be thrown in the operator's or bystander's direction and result in serious personal injury or death to the operator or bystanders.

Check the debris bag frequently. If it is damaged, install a new placement bag.

Using the Bag Vent

The bag has two zippered vents. When vacuuming leaves, the Velcro should be used to open the side vents to allow free movement of air.

Important: Keep the inside of the bag clean to allow the air to circulate properly.



Storage

1. Stop the engine and remove the wire from the spark plug.
2. Remove dirt and grime from the external parts of the entire machine, especially the engine. Clean dirt and chaff from the outside of the engine cooling system.

Important: Do not pressure wash the engine.

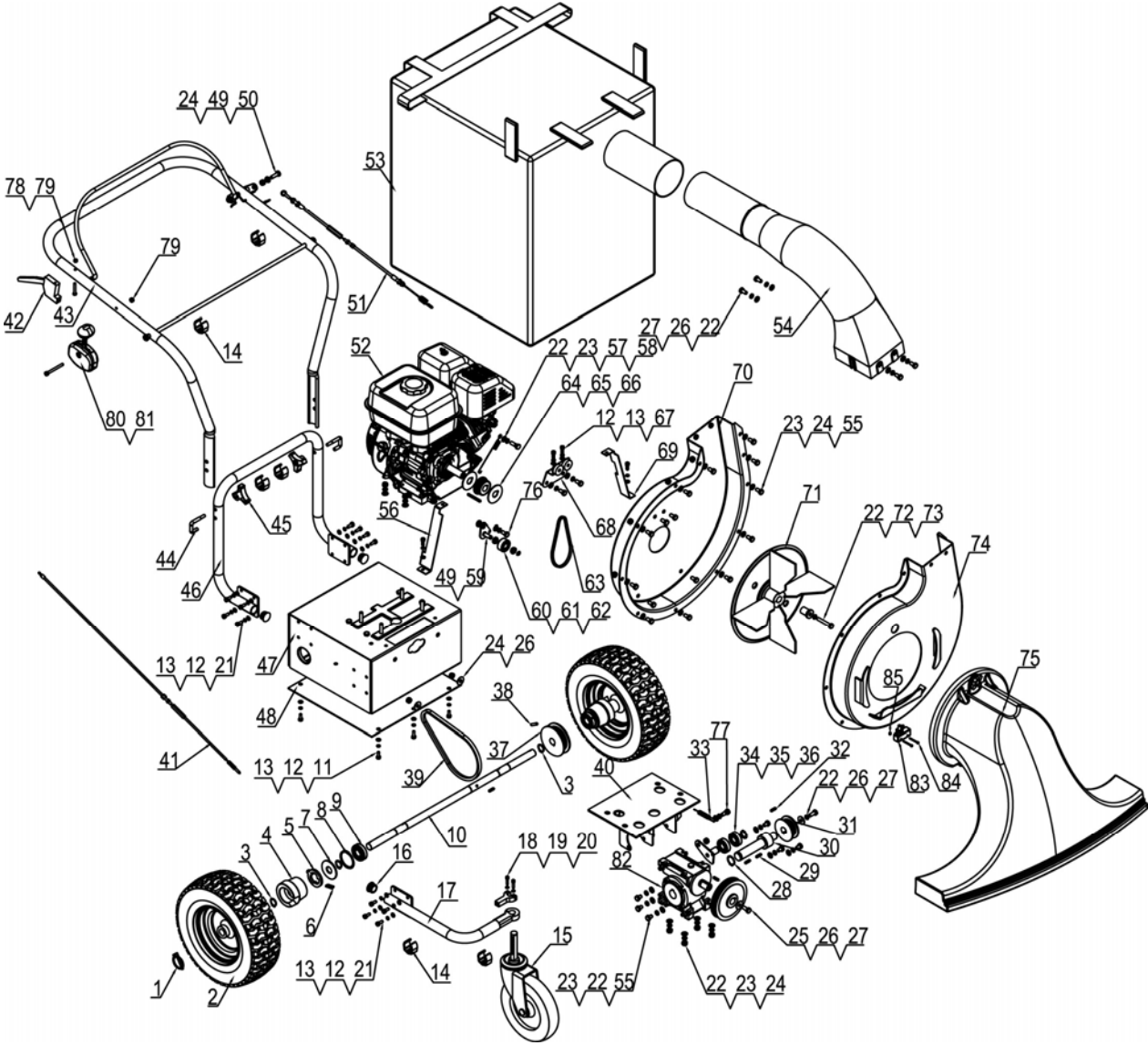
Removing the Machine from Storage

1. Check all fastening screws and tighten them at regular intervals.
2. Check engine oil level.
3. Check the spark plug for wear and correct electrode gap (0.7mm).
4. Fill the fuel tank with fresh and clean 91 unleaded fuel.

Specifications

EngineHonda
Engine ModelGX200
Engine Power6.5HP
Propelled TypeSelf Propelled Variable Speed
Max. Propelled Speed2km/h
Wheel Size7"/4.00-4 Jockey Wheel
Overall Size151x79x102cm
Packaging Size86.5X69X73cm

Illustrated Parts List



Ref #	Part No.	Description	Qty
1	TS600-00009	Ring Type O Lock	2
2	NC6501-00010	Wheel	2
3	9304-20000-FH	Circlip for Shaft	5
4	NC6501-00009	Wheel Flange	2
5	NC65-00028	Ratchet	2
6	NC65-00024	Key	2
7	NC6501-00008	Tire Mounting Flat Pad Ø8	2
8	9304-47000-FH	Shaft Retaining Ring	2
9	NC6501-00017	Bearing	2
10	NC6501-00007	Wheel Axle	1
11	9101-06020-DX8.8	Hex Bolt M6x20	6
12	9306-06000-DX	Lock Washer Ø6	22
13	9301-06000-DX	Flat Washer Ø6	22
14	NC6501-00012	Line Buckle	7
15	NC6501-00013	Universal Wheel Assembly	1
16	NC6501-00030	Silencer	3
17	NC6501-07000	Front Wheel Bracket Welding	1
18	9105-05020-DX	Inner Hex Bolt M5x20	2
19	9306-05000-DX	Lock Washer Ø5	2
20	NC6501-00021	Wheel Clutch	1
21	9101-06025-DX	Hex Bolt M6x25	12
22	9306-08000-DX	Lock Washer Ø8	25
23	9301-08000-DX	Flat Washer Ø8	30
24	9206-08000-DX	Nylon Lock Nut M8	23
25	NC6501-00002	Synchronous Driven Wheel	1
26	9302-08000-DX	Big Flat Washer Ø8	8
27	9101-08020-DX8.8	Hex Bolt M8x20	6
28	9304-25000-FH	Shaft Retaining Ring	1
29	8801-8x7x30	Flat Key	2
30	NC6501-00019	Gearbox Output Shaft	1
31	NC6501-00004	Multi-wedge Drive Wheel	1
32	5x5x20	Flat Key	3
33	NC6501-00024	Tensioning Spring 1	1
34	NC6501-03000	Tensioning Welded Parts	1
35	9603-6203	Bearing	2
36	9304-17000-FH	Shaft Retaining Ring	1
37	NC6501-00005	Multi-wedge Driven Wheel	1

Ref #	Part No.	Description	Qty
38	9402-06025-FH	Elastic Cylindrical Pin	1
39	7-PJ-530	V-ribbed Belt	1
40	NC6501-02000	Gearbox Mounting Weldment	1
41	NC6501-00020	Wheel Clutch Cable	1
42	NC6501-00022	Handle	1
43	NC6501-09000	Handle Assembly	1
44	NC6501-00015	U-screw	2
45	N280-70000	Hand Wheel	2
46	NC6501-08000	Rear Bracket Welding	1
47	NC6501-01000	Engine Mounting Weldment	1
48	NC6501-00023	Bottom Sealing Plate	1
49	NC6501-00026	Mounting Washer	2
50	9101-08025-DX8.8	Hex Bolt M8x25	1
51	NC6501-00018	Tension Cable	1
52	GX200	Honda Engine	1
53	NC6501-00016	Debris Bag	1
54	NC6501-00014	Ventilation Duct	1
55	9101-08016-DX8.8	Hex Bolt M8x16	21
56	NC6501-00029	Protective Cover 2	1
57	NC6501-00025	Tensioning Spring 2	1
58	NC6501-00011	Spring Retaining Bolt	1
59	NC6501-11000	Timing Belt Tensioner	1
60	NC6501-00027	Bearing Washer	2
61	GB/T 296-3202	Bearing	1
62	9304-09000-FH	Shaft Retaining Ring	1
63	HTD570-5M-15	Timing Belt	1
64	8801-4.78x4.78x50	Flat Key	1
65	NC6501-00001	Synchronous Drive Wheel	1
66	NC6501-00003	Impeller Gasket	2
67	9105-06020-DX	Inner Head Bolt M6x20	4
68	NC6501-10000	Connecting the Welded Parts	1
69	NC6501-00028	Protective Cover 1	1
70	NC6501-05000	Chassis Back Plate Welding	1
71	NC6501-04000	Blade Welding	1
72	NC6501-00031	Crankshaft Compression	1
73	5/16-24UNF-2	Hex Bolt	1
74	NC6501-06000	Case Front Plate Welding	1

Ref #	Part No.	Description	Qty
75	NC65-05000	Vacuum Snout	1
76	5/16-24UNF-4/5	Hex Bolt	3
77	NC6501-00032	Clutch Spring Bolt	1
78	9110-06055-DX	Cross Recessed Pan Head Bolt M6x55	1
79	9206-06000-DX	Nylon Lock Nut M6	2
80	9101-06065-DX8.8	Hex Bolt M6x65	1
81	TS6100-00029	Throttle Switch	1
82	NC6501-00006	Gearbox	1
83	NC6501-00033	Switch	1
84	9110-04030-DX	Screw M4x30	2
85	9206-04000-DX	Nylon Lock Nut M4	2

Customer Service:

303 Warrigal Road, Cheltenham, Victoria 3192, Australia

Telephone: 1300 454 585

Website: www.BWMachinery.com.au

Email: admin@bwmachinery.com.au

Spare parts are available from our dealers and our official website.